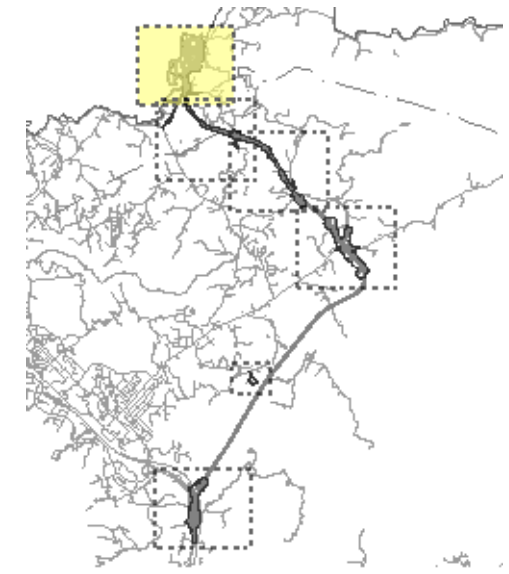


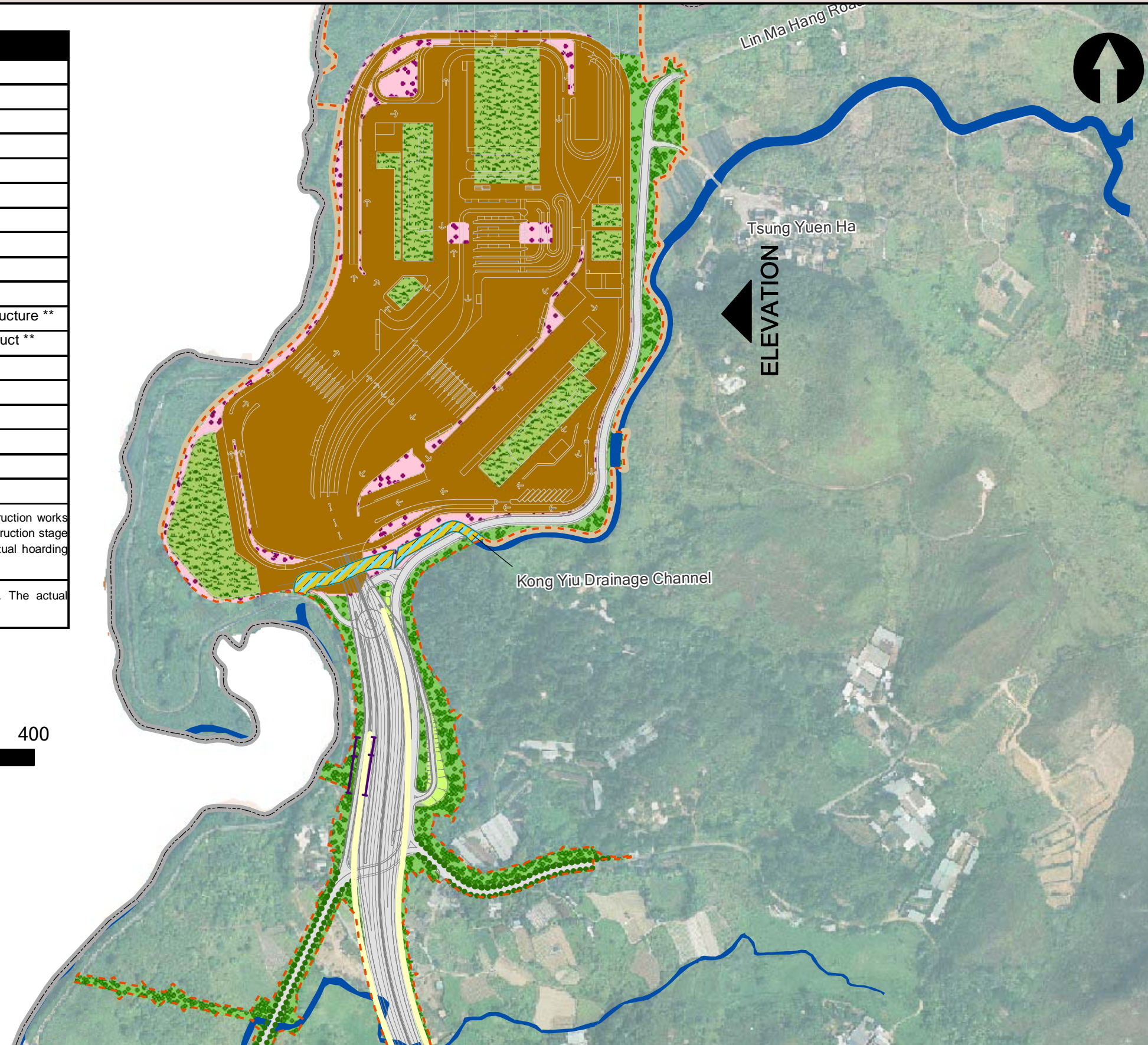
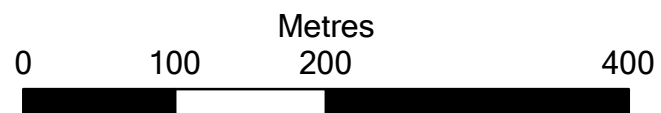
Typical Elevation of BCP with Mitigation Measures



ID No.	Mitigation Measure
CM1	Tree Protection and Preservation
CM2	Tree Transplantation
CM3	Decorative Screen Hoarding *
CM4	Light Control
CM5	Topsoil Reuse
CM6	Watercourse Modification
OM1	Detailed Design Considerations
OM2	Aesthetically Pleasing Design
OM3	Compensatory Planting
OM4	Buffer Tree Planting
OM5	Aesthetic Improvement Planting-Viaduct Structure **
OM6	Aesthetic Improvement Planting-Under Viaduct **
OM7	Landscaped Slope
OM8	Green Roof **
OM9	Vertical Greening **
OM10	Roadside Amenity Planting
OM11	Reinstatement
OM12	Light Control (Operation)

\* Decorative screen hoarding will be erected along the construction works site boundary close to visually sensitive receivers during construction stage to screen undesirable views of the construction site. The actual hoarding locations will be subject to detail design.

\*\* The greening area on structures are for indicative only. The actual planting areas will be subject to detail design.



**Key**

- Existing River/Stream/Channel
- Works Area (at Grade)
- Works Area (Tunnel)
- Future BCP and Associated Road Works
- Proposed Noise Barrier

**Mitigation Measures**

- CM1, CM2, OM3, OM4, OM11
- CM1, CM2, OM3, OM4, OM11 (within BCP)
- CM3
- OM1, OM2, OM8, OM9, OM12 (within BCP)
- CM6
- OM1, OM2
- OM5
- OM7
- OM6, OM12
- OM9 (Retaining Wall / Retaining Wall & Abutment)
- OM10

Rev	Date	Drawn	Description	Ch'k'd	App'd

**Mott MacDonald**

20/F Two Landmark East  
100 How Ming Street  
Kwan Tong, Kowloon  
Hong Kong  
T +852 2828 5757  
F +852 2827 1823  
W www.mottmac.com.hk

Client

**CEDD** CIVIL ENGINEERING AND DEVELOPMENT DEPARTMENT

Project

AGREEMENT NO. CE45/2008(CE)  
LIANTANG/HEUNG YUEN WAI BOUNDARY CONTROL POINT AND ASSOCIATED WORKS -- INVESTIGATION

Title

LANDSCAPE AND VISUAL MITIGATION PLAN- SECTION A, ZONE 1

Designed		Eng. Chk.	
Drawn		Coordination	
Dwg. Chk.		Approved	
Scale at A3	1 : 5000	Project	Status
Drawing No		CAD file	
			Rev