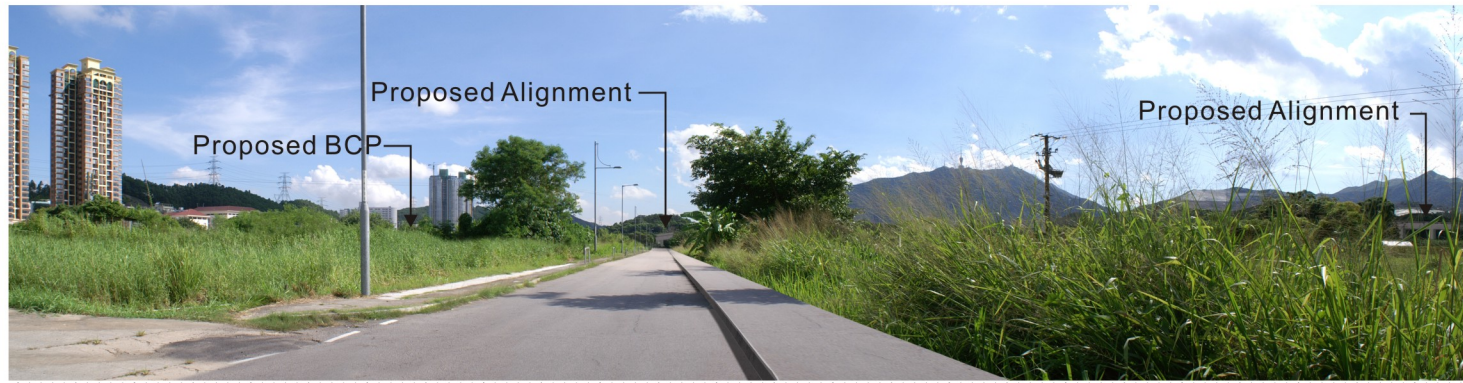




Existing View Towards the Project from VP3



View Towards the Project without Mitigation Measures on Day 1 Operation from VP3

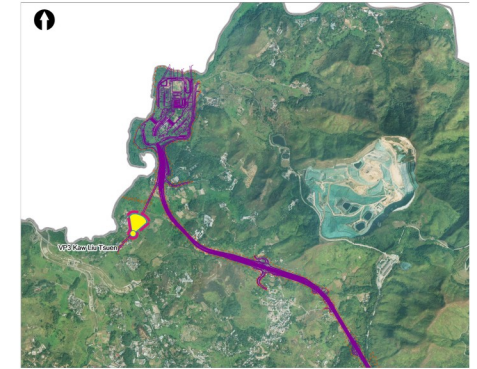


View Towards the Project with Mitigation Measures on Day 1 Operation from VP3



View Towards the Project with Mitigation Measures at Year 10 Operation from VP3

© Mott MacDonald Hong Kong Limited
 This document should not be relied on or used in circumstances other than those for which it was originally prepared and for which Mott MacDonald Hong Kong Limited was commissioned. Mott MacDonald Limited accepts no responsibility for this document to any other party other than the person by whom it was commissioned.



Rev	Date	Drawn	Description	Ch'k'd	App'd

Mott MacDonald

28/F Two Landmark East
 180 How Ming Street
 Kwun Tong, Kowloon
 Hong Kong
 T +852 2828 5757
 F +852 2827 1823
 W www.mottmac.com.hk

CEDD CIVIL ENGINEERING AND DEVELOPMENT DEPARTMENT

AGREEMENT NO. CE45/2008(CE)
 LIANTANG/HEUNG YUEN WAI BOUNDARY CONTROL POINT AND ASSOCIATED WORKS -- INVESTIGATION

VP3 PHOTOMONTAGE AT KAW LIU VILLAGE

Design		Eng. Chk.	
Drawn		Coordination	
Dwg. Chk.		Approved	
Scale at A3	Project	Status	
	CAD file		
Drawing No	FIGURE 11.7.10		Rev

© COPYRIGHT RESERVED