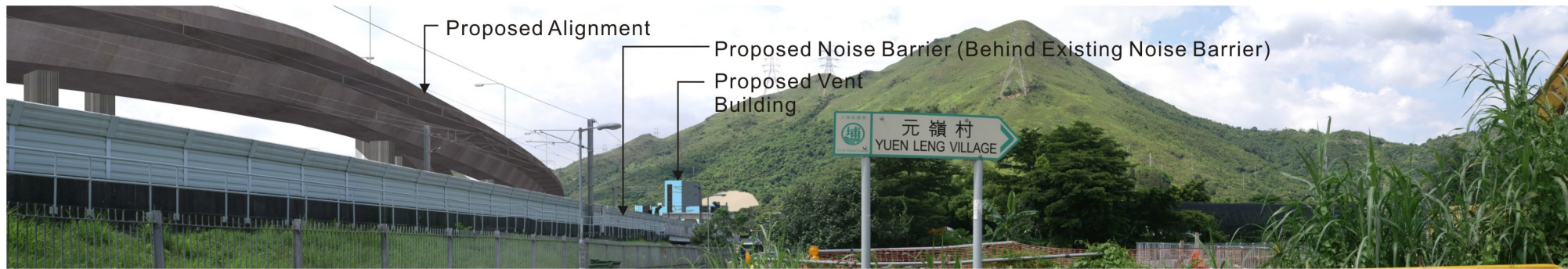
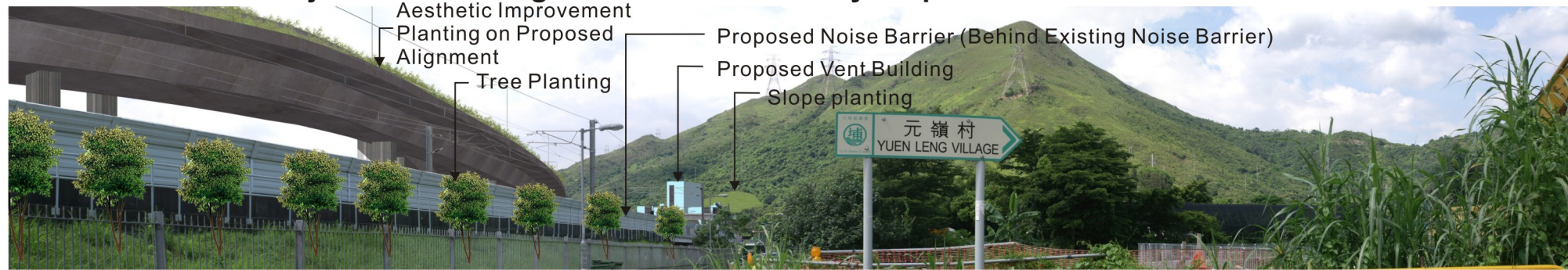




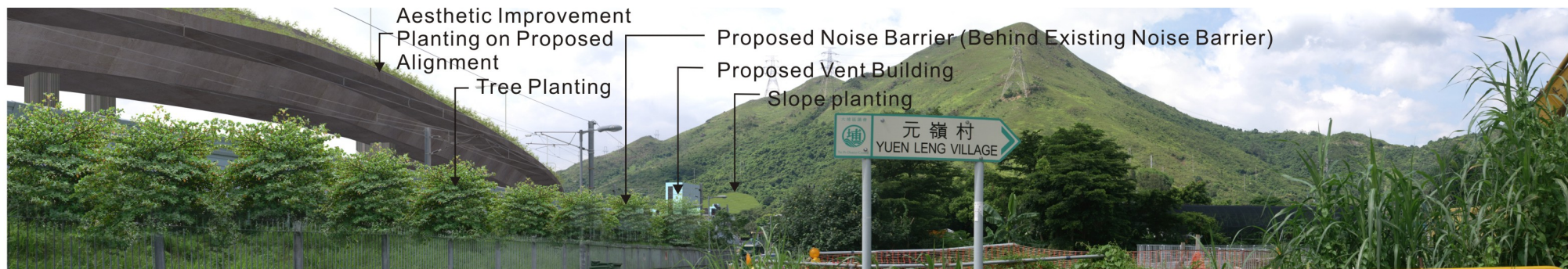
Existing View Towards the Project from VP11



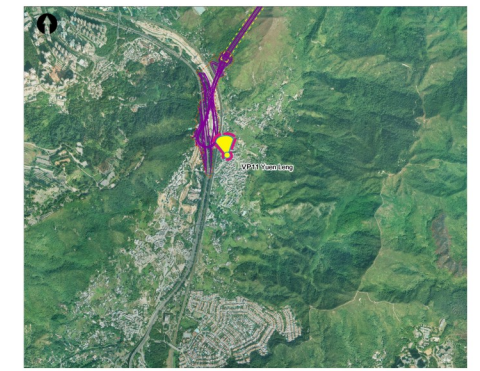
View Towards the Project without Mitigation Measures on Day 1 Operation from VP11



View Towards the Project with Mitigation Measures on Day 1 Operation from VP11



View Towards the Project with Mitigation Measures at Year 10 Operation from VP11



| Rev | Date | Drawn | Description | Ch'k'd | App'd |
|-----|------|-------|-------------|--------|-------|
| | | | | | |



20/F Two Landmark East
180 How Ming Street
Kwun Tong, Kowloon
Hong Kong
T +852 2828 5757
F +852 2827 1823
W www.mottmac.com.hk



**CIVIL ENGINEERING
AND DEVELOPMENT
DEPARTMENT**

**AGREEMENT NO. CE45/2008(CE)
LIANTANG/HEUNG YUEN WAI BOUNDARY
CONTROL POINT AND ASSOCIATED WORKS
-- INVESTIGATION**

**VP11 PHOTOMONTAGE AT
YUEN LENG**

| | | | |
|-------------|----------|--------------|--------|
| Design | | Eng. Chk. | |
| Drawn | | Coordination | |
| Dwg. Chk. | | Approved | |
| Scale at A3 | Project | | Status |
| | CAD file | | |
| Drawing No | | | Rev |

© COPYRIGHT RESERVED

FIGURE 11.7.18