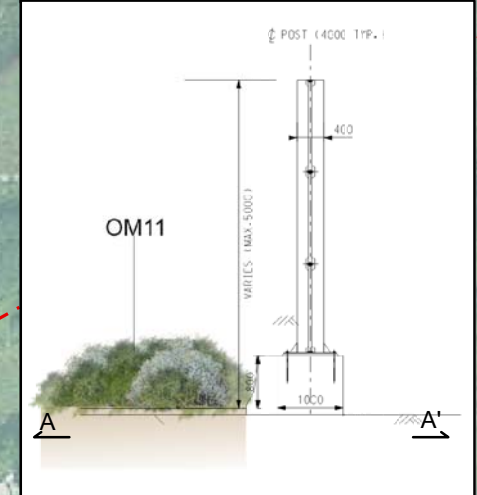


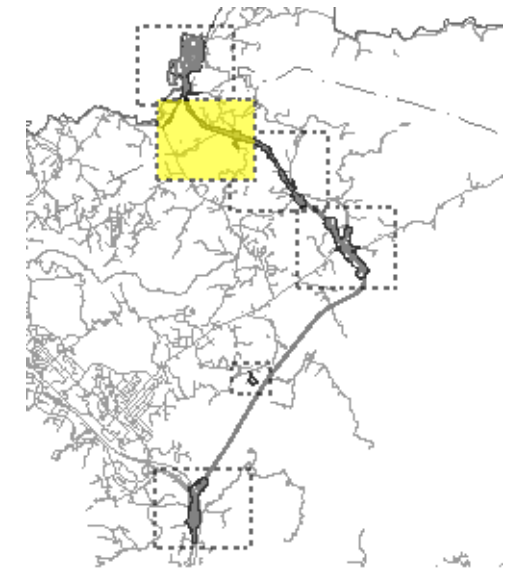
Typical Section of Noise Barrier at Grade



ID No.	Mitigation Measure
CM1	Tree Protection and Preservation
CM2	Tree Transplantation
CM3	Decorative Screen Hoarding *
CM4	Light Control
CM5	Topsoil Reuse
CM6	Watercourse Modification
OM1	Detailed Design Considerations
OM2	Aesthetically Pleasing Design
OM3	Compensatory Planting
OM4	Buffer Tree Planting
OM5	Aesthetic Improvement Planting-Viaduct Structure **
OM6	Aesthetic Improvement Planting-Under Viaduct **
OM7	Landscaped Slope
OM8	Green Roof **
OM9	Vertical Greening **
OM10	Roadside Amenity Planting
OM11	Reinstatement
OM12	Light Control (Operation)

* Decorative screen hoarding will be erected along the construction works site boundary close to visually sensitive receivers during construction stage to screen undesirable views of the construction site. The actual hoarding locations will be subject to detail design.

** The greening area on structures are for indicative only. The actual planting areas will be subject to detail design.



Key

- Existing River/Stream/Channel
- Works Area (at Grade)
- Works Area (Tunnel)
- Future BCP and Associated Road Works
- Proposed Noise Barrier
- Proposed Wetland Compensation Area

Mitigation Measures

- CM1, CM2, OM3, OM4, OM11
- CM3
- CM6 (Bridge)
- CM6 (Box Culvert)
- OM1, OM2
- OM5
- OM7
- OM6, OM12
- OM10

Rev	Date	Drawn	Description	Ch'k'd	App'd

20/F Two Landmark East
100 How Ming Street
Kwan Tong, Kowloon
Hong Kong
T +852 2828 5757
F +852 2827 1823
W www.mottmac.com.hk

Client

CIVIL ENGINEERING AND DEVELOPMENT DEPARTMENT

Project

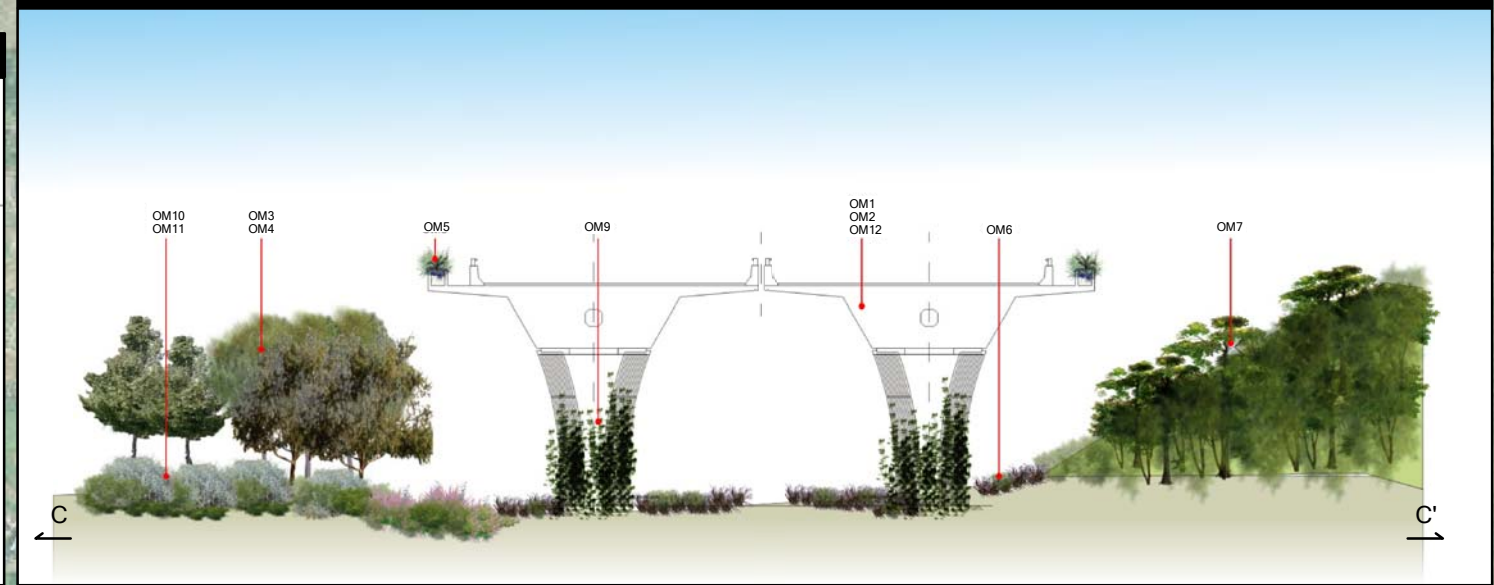
AGREEMENT NO. CE45/2008(CE)
LIANTANG/HEUNG YUEN WAI BOUNDARY CONTROL POINT AND ASSOCIATED WORKS -- INVESTIGATION

Title

LANDSCAPE AND VISUAL MITIGATION PLAN- SECTION A, ZONES 1 & 2

Designed		Eng. Chk.	
Drawn		Coordination	
Dwg. Chk.		Approved	
Scale at A3	1 : 5000	Project	Status
Drawing No		CAD file	
			Rev

Typical Section of Viaduct with Mitigation Measures



Typical Section of Abutment with Mitigation Measures

