

**KEY PLAN**  
SCALE 1:100000

- LEGEND:**
- - - WORKS AREA (ABOVE GROUND)
  - - - WORKS AREA (TUNNEL)
  - AT GRADE WORKS (SLOPES & ALIGNMENT)
  - VIADUCT
  - TUNNEL VENTILATION BUILDING
  - DRILL & BLAST CONSTRUCTION
  - ADMINISTRATION BUILDING

P3	AUG 10	MING	GENERAL REVISION	DC	HT
P2	MAY 10	MING	GENERAL REVISION	FY	HT
P1	APR 10	MING	FIRST ISSUE	FY	HT
Rev	Date	Drawn	Description	Ch'k'd	App'd

**Mott MacDonald**

20/F Two Landmark East  
100 How Ming Street  
Kowloon Tong, Kowloon  
Hong Kong  
☎ +852 2828 8787  
☎ +852 2827 1823  
www.mottmac.com.hk

Client

**CEDD**

**CIVIL ENGINEERING AND DEVELOPMENT DEPARTMENT**

Project

AGREEMENT NO. CE45/2008(CE)  
LIANTANG/HEUNG YUEN WAI BOUNDARY CONTROL POINT AND ASSOCIATED WORKS

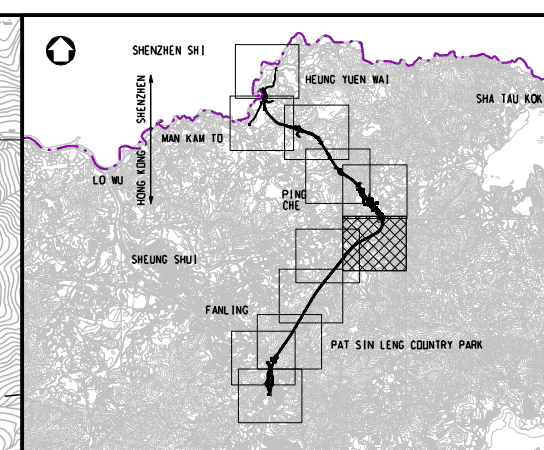
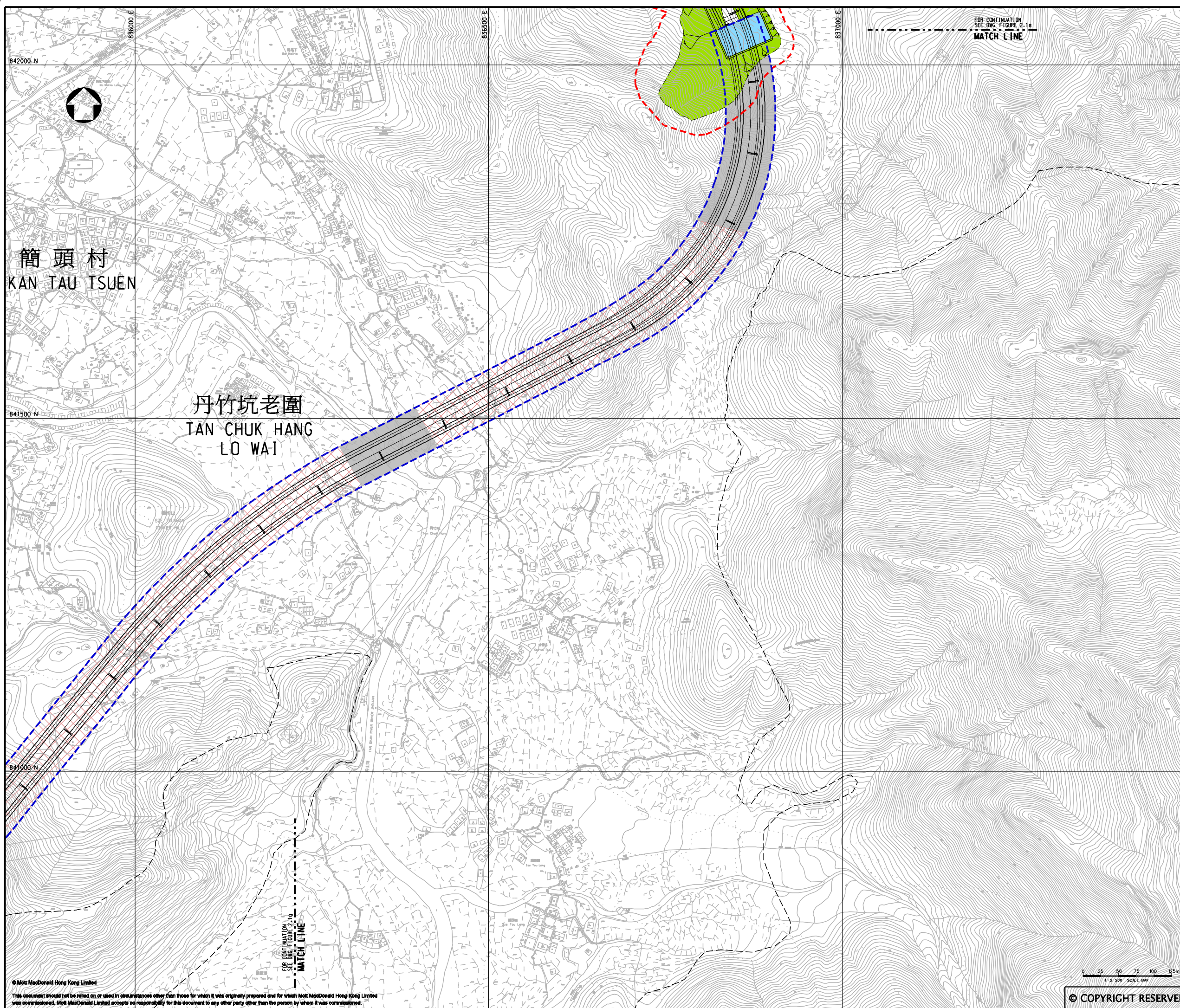
Title

PROJECT AREA - DESCRIPTION OF WORKS  
(SHEET 5 OF 11)

Designed	DC	Eng.Chk.	EC
Drawn	MING	Coordination	EC
Dwg.Chk.	DC	Approved	HT
Scale at A1	Project	Status	
1:2500	255228	PRE	
Drawing No	CAD file	Rev	
FIGURE 2.1e	\\env\proj\255228\report\env\velo\1008\6\FIG 2-1e.dgn	P3	

© Mott MacDonald Hong Kong Limited  
This document should not be relied on or used in circumstances other than those for which it was originally prepared and for which Mott MacDonald Hong Kong Limited was commissioned. Mott MacDonald Limited accepts no responsibility for this document to any other party other than the person by whom it was commissioned.





**KEY PLAN**  
SCALE 1:100000


- LEGEND:**
- - - WORKS AREA (ABOVE GROUND)
  - - - WORKS AREA (TUNNEL)
  - AT GRADE WORKS (SLOPES & ALIGNMENT)
  - TUNNEL VENTILATION BUILDING
  - DRILL & BLAST CONSTRUCTION
  - MANUAL EXCAVATION (INDICATIVE)

Rev	Date	Drawn	Description	Ch'k'd	App'd
P3	AUG 10	MING	GENERAL REVISION	DC	HT
P2	MAY 10	MING	GENERAL REVISION	FY	HT
P1	APR 10	MING	FIRST ISSUE	FY	HT



20/F Two Landmark East  
100 How Ming Street  
Kowloon, Kowloon  
Hong Kong  
T +852 2828 8787  
F +852 2827 1823  
www.mottmac.com.hk

**Client**



**CIVIL ENGINEERING  
AND DEVELOPMENT  
DEPARTMENT**

**Project**  
AGREEMENT NO. CE45/2008(CE)  
LIANTANG/HEUNG YUEN WAI BOUNDARY  
CONTROL POINT AND ASSOCIATED WORKS

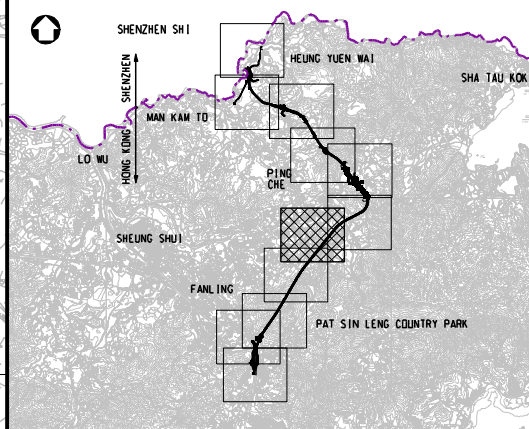
**Title**  
PROJECT AREA - DESCRIPTION OF WORKS  
(SHEET 6 OF 11)

Designed	DC	Eng. Chk.	EC
Drawn	MING	Coordination	EC
Dwg. Chk.	DC	Approved	HT
Scale at A1	Project	Status	
1:2500	255228	PRE	
Drawing No	CAD file	Rev	
FIGURE 2.1f	\\server\velo\008\6\FIG 2-1f.dgn	P3	

© COPYRIGHT RESERVED

This document should not be relied on or used in circumstances other than those for which it was originally prepared and for which Mott MacDonald Hong Kong Limited was commissioned. Mott MacDonald Limited accepts no responsibility for this document to any other party other than the person by whom it was commissioned.





KEY PLAN  
SCALE 1:100000

- LEGEND:
- WORKS AREA (TUNNEL)
  - DRILL & BLAST CONSTRUCTION

Rev	Date	Drawn	Description	Ch'k'd	App'd
P3	AUG 10	MING	GENERAL REVISION	DC	HT
P2	MAY 10	MING	GENERAL REVISION	FY	HT
P1	APR 10	MING	FIRST ISSUE	FY	HT

20F Two Landmark East  
100 How Ming Street  
Kowloon, Kowloon  
Hong Kong  
T +852 2828 8787  
F +852 2827 1823  
www.mottmac.com.hk

Client

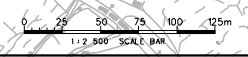
CIVIL ENGINEERING  
AND DEVELOPMENT  
DEPARTMENT

Project  
AGREEMENT NO. CE45/2008(CE)  
LIANTANG/HEUNG YUEN WAI BOUNDARY  
CONTROL POINT AND ASSOCIATED WORKS

Title  
PROJECT AREA - DESCRIPTION OF WORKS  
(SHEET 7 OF 11)

Designed	DC	Eng.Chk.	EC
Drawn	MING	Coordination	EC
Dwg.Chk.	DC	Approved	HT
Scale at A1	Project	Status	
1:2500	255228	PRE	
Drawing No	CAD file	Rev	
FIGURE 2.1g	\\env\velo\0086\FIG 2-1g.dgn	P3	

© COPYRIGHT RESERVED

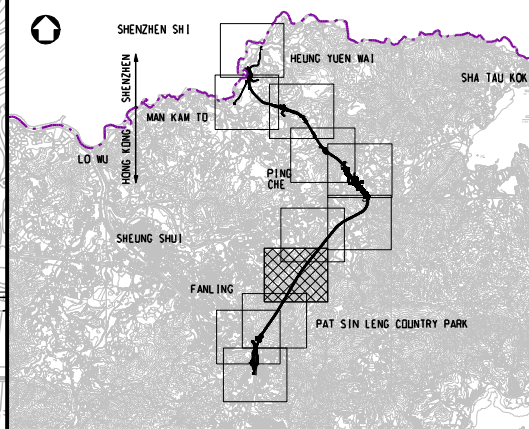
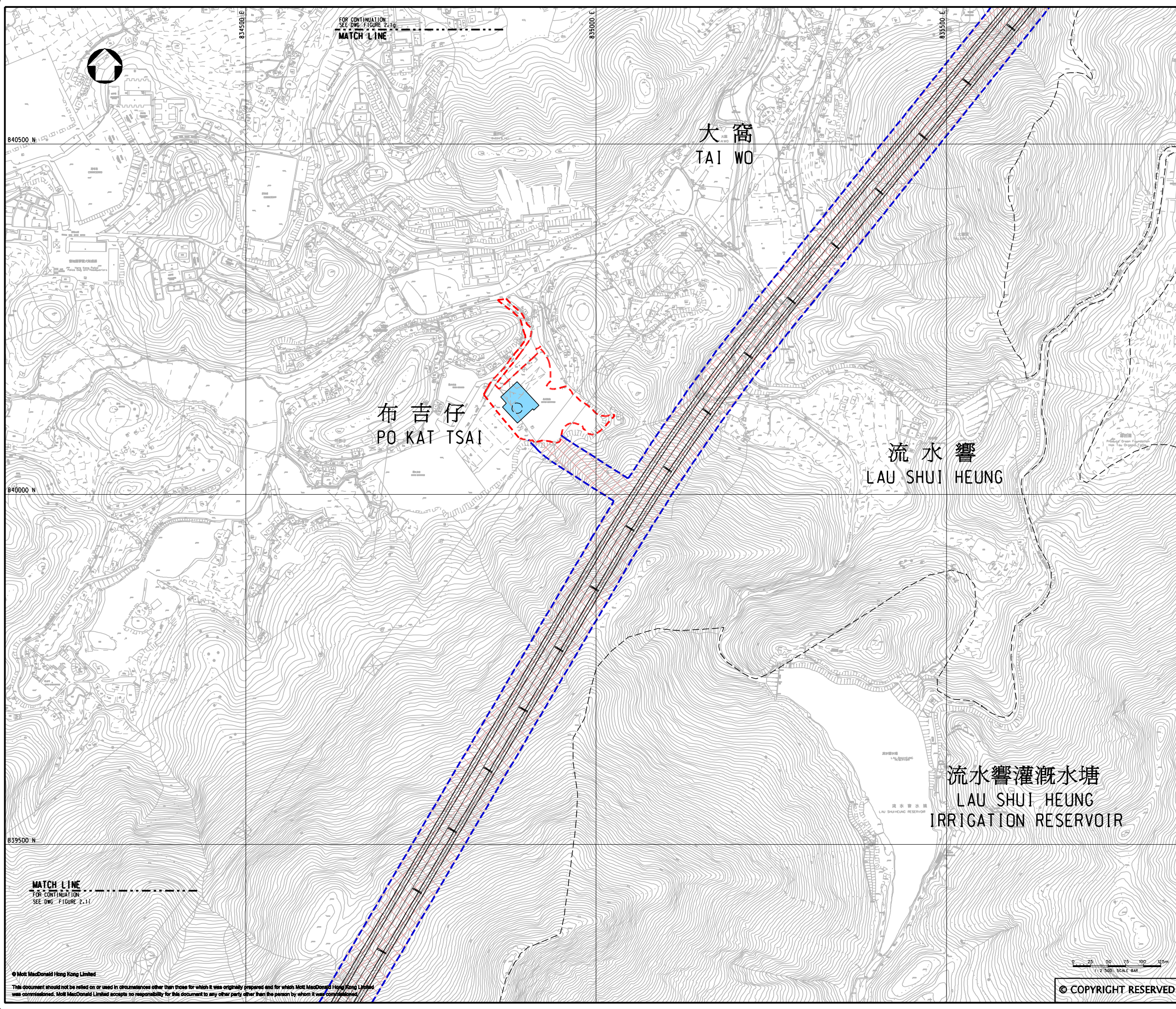


MATCH LINE  
FOR CONTINUATION  
SEE DWG. FIGURE 2.1h

MATCH LINE  
FOR CONTINUATION  
SEE DWG. FIGURE 2.1f

© Mott MacDonald Hong Kong Limited  
This document should not be relied on or used in circumstances other than those for which it was originally prepared and for which Mott MacDonald Hong Kong Limited was commissioned. Mott MacDonald Limited accepts no responsibility for this document to any other party other than the person by whom it was commissioned.





**KEY PLAN**  
SCALE 1:100000

**LEGEND:**

- - - WORKS AREA (ABOVE GROUND)
- - - WORKS AREA (TUNNEL)
- DRILL & BLAST CONSTRUCTION
- MID-TUNNEL VENTILATION BUILDING

P3	AUG 10	MING	GENERAL REVISION	DC	HT
P2	MAY 10	MING	GENERAL REVISION	FY	HT
P1	APR 10	MING	FIRST ISSUE	FY	HT
Rev	Date	Drawn	Description	Ch'k'd	App'd

**Mott MacDonald**

20/F Two Landmark East  
100 How Ming Street  
Kowloon, Kowloon  
Hong Kong  
☎ +852 2828 8787  
☎ +852 2827 1823  
www.mottmac.com.hk

**Client**

**CEDD** CIVIL ENGINEERING AND DEVELOPMENT DEPARTMENT

**Project**

AGREEMENT NO. CE45/2008(CE)  
LIANTANG/HEUNG YUEN WAI BOUNDARY CONTROL POINT AND ASSOCIATED WORKS

**Title**

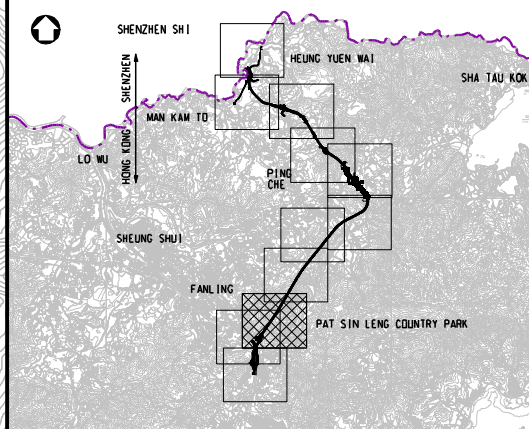
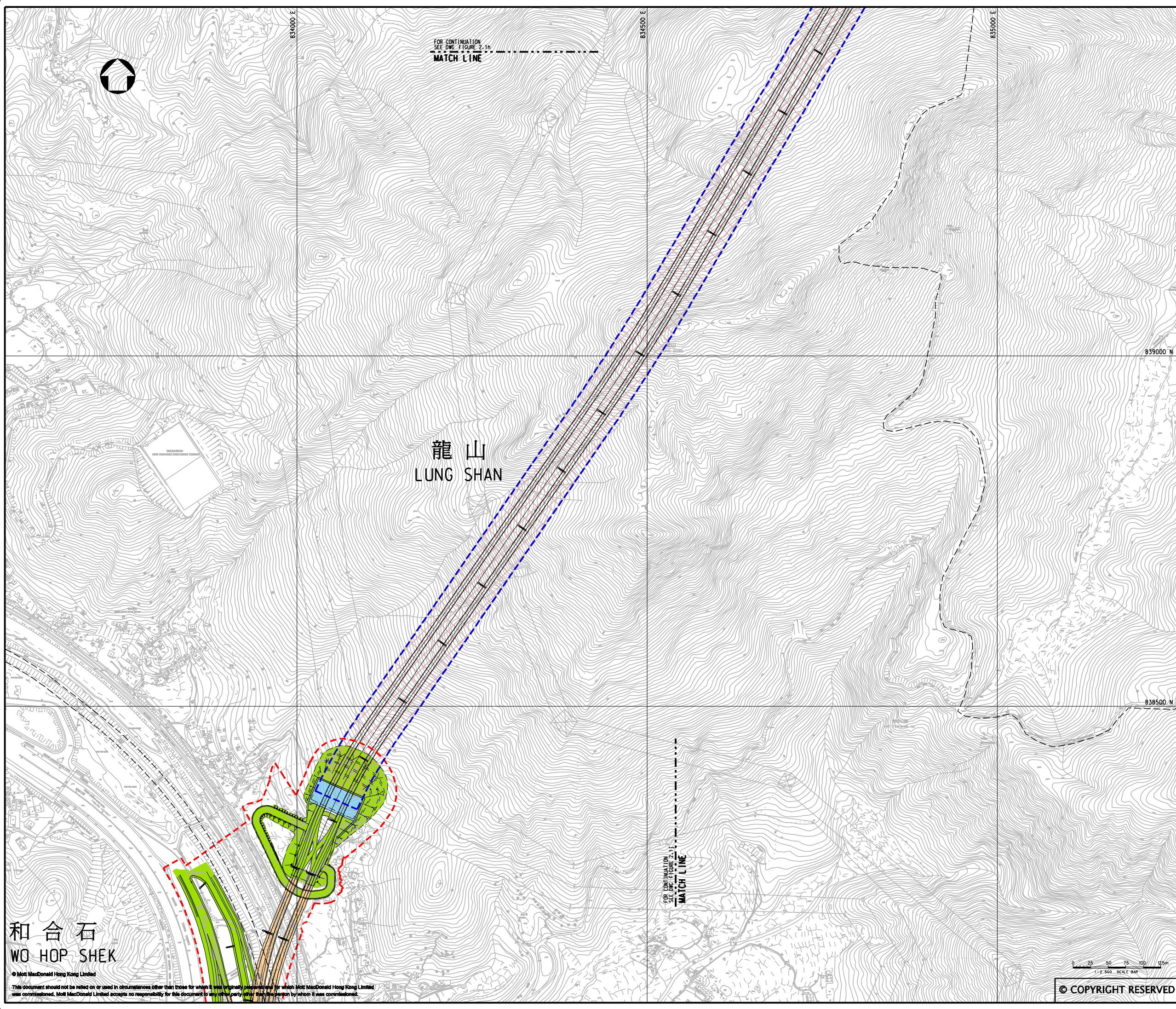
PROJECT AREA - DESCRIPTION OF WORKS  
(SHEET 8 OF 11)

Designed	DC	Eng. Chk.	EC
Drawn	MING	Coordination	EC
Dwg. Chk.	DC	Approved	HT
Scale at A1	Project	Status	
1:2500	255228	PRE	
CAD file	Rev	Rev	
R:\255228\report\env\env\1008\6\FIG 2-1h.dgn		P3	

0 25 50 75 100 125m  
1:2500 SCALE BAR

© COPYRIGHT RESERVED





**KEY PLAN**  
SCALE 1:100000

- LEGEND:**
- - - WORKS AREA (ABOVE GROUND)
  - - - WORKS AREA (TUNNEL)
  - AT GRADE WORKS (SLOPES & ALIGNMENT)
  - TUNNEL VENTILATION BUILDING
  - DRILL & BLAST CONSTRUCTION

Rev	Date	Drawn	Description	Ch'k'd	App'd
P3	AUG 10	MING	GENERAL REVISION	DC	HT
P2	MAY 10	MING	GENERAL REVISION	FY	HT
P1	APR 10	MING	FIRST ISSUE	FY	HT

20/F Two Landmark East  
100 How Ming Street  
Kowloon  
Hong Kong  
T +852 2828 8787  
F +852 2827 1823  
www.mottmac.com.hk

Client

**CIVIL ENGINEERING  
AND DEVELOPMENT  
DEPARTMENT**

Project  
AGREEMENT NO. CE45/2008(CE)  
LIANTANG/HEUNG YUEN WAI BOUNDARY  
CONTROL POINT AND ASSOCIATED WORKS

Title  
PROJECT AREA - DESCRIPTION OF WORKS  
(SHEET 9 OF 11)

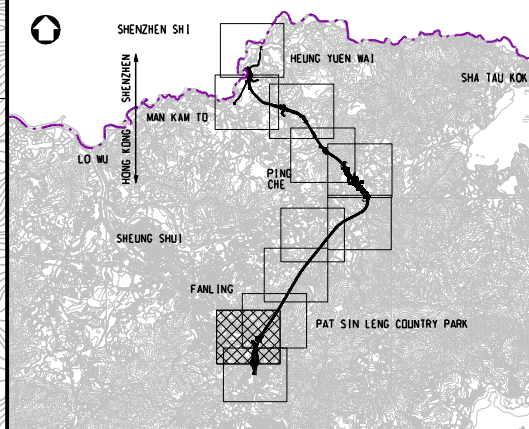
Designed	DC	Eng.Chk.	EC
Drawn	MING	Coordination	EC
Dwg.Chk.	DC	Approved	HT
Scale at A1	Project	Status	
1:2500	255228	PRE	
CAD file	Status		
\\server\proj\report\env\velo\10086\FIG 2-ii.dgn	PRE		
Drawing No	Figure	Rev	
FIGURE 2.1i		P3	

和合石  
WO HOP SHEK

© Mott MacDonald Hong Kong Limited  
This document should not be relied on or used in circumstances other than those for which it was originally prepared and for which Mott MacDonald Hong Kong Limited was commissioned. Mott MacDonald Limited accepts no responsibility for this document to any other party who may be misled by whom it was commissioned.

© COPYRIGHT RESERVED





**KEY PLAN**  
SCALE 1:100000

**LEGEND:**

- - - WORKS AREA (ABOVE GROUND)
- - - WORKS AREA (TUNNEL)
- AT GRADE WORKS (SLOPES & ALIGNMENT)
- VIADUCT
- TUNNEL VENTILATION BUILDING
- DRILL & BLAST CONSTRUCTION

Rev	Date	Drawn	Description	Ch'k'd	App'd
P3	AUG 10	MING	GENERAL REVISION	DC	HT
P2	MAY 10	MING	GENERAL REVISION	FY	HT
P1	APR 10	MING	FIRST ISSUE	FY	HT

**Mott MacDonald**

20/F Two Landmark East  
100 How Ming Street  
Kowloon  
Hong Kong  
T +852 2828 8787  
F +852 2827 1823  
www.mottmac.com.hk

**Client**

**CEDD** CIVIL ENGINEERING AND DEVELOPMENT DEPARTMENT

**Project**

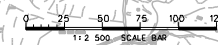
AGREEMENT NO. CE45/2008(CE)  
LIANTANG/HEUNG YUEN WAI BOUNDARY CONTROL POINT AND ASSOCIATED WORKS

**Title**

PROJECT AREA - DESCRIPTION OF WORKS  
(SHEET 10 OF 11)

Designed	DC	Eng.Chk.	EC
Drawn	MING	Coordination	EC
Dwg.Chk.	DC	Approved	HT
Scale at A1	1:2500	Project	255228
CAD file	I:\255228\report\env\env\1008\6\FIG 2-j.dgn		Status
Drawing No	FIGURE 2.1j	Rev	P3

© COPYRIGHT RESERVED

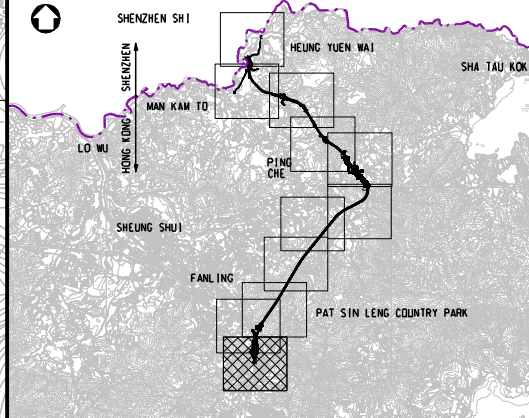


**MATCH LINE**  
FOR CONTINUATION  
SEE DWG. FIGURE 2.1K

**MATCH LINE**  
FOR CONTINUATION  
SEE DWG. FIGURE 2.1J

© Mott MacDonald Hong Kong Limited  
This document should not be relied on or used in circumstances other than those for which it was originally prepared and for which Mott MacDonald Hong Kong Limited was commissioned. Mott MacDonald Limited accepts no responsibility for this document to any other party other than the person by whom it was commissioned.





LEGEND:

- WORKS AREA (ABOVE GROUND)
- AT GRADE WORKS (ALIGNMENT)
- VIADUCT

P3	AUG 10	MING	GENERAL REVISION	DC	HT
P2	MAY 10	MING	GENERAL REVISION	FY	HT
P1	APR 10	MING	FIRST ISSUE	FY	HT
Rev	Date	Drawn	Description	Ch'k'd	App'd

20F Two Landmark East  
100 How Ming Street  
Kowloon  
Hong Kong  
T +852 2828 5757  
F +852 2827 1823  
www.mottmac.com.hk

Client

CIVIL ENGINEERING  
AND DEVELOPMENT  
DEPARTMENT

Project  
AGREEMENT NO. CE45/2008(CE)  
LIANTANG/HEUNG YUEN WAI BOUNDARY  
CONTROL POINT AND ASSOCIATED WORKS

Title  
PROJECT AREA - DESCRIPTION OF WORKS  
(SHEET 11 OF 11)

Designed	DC	Eng.Chk.	EC
Drawn	MING	Coordination	EC
Dwg.Chk.	DC	Approved	HT
Scale at A1	Project	Status	
1:2500	255228	PRE	
Drawing No	CAD file	Rev	
FIGURE 2.1k	\\report\env\velo\1008\6\FIG 2-1k.dgn	P3	

0 25 50 75 100 125m  
1:2500 SCALE BAR

© COPYRIGHT RESERVED

© Mott MacDonald Hong Kong Limited  
This document should not be relied on or used in circumstances other than those for which it was originally prepared and for which Mott MacDonald Hong Kong Limited was commissioned. Mott MacDonald Limited accepts no responsibility for this document to any other party other than the person by whom it was commissioned.