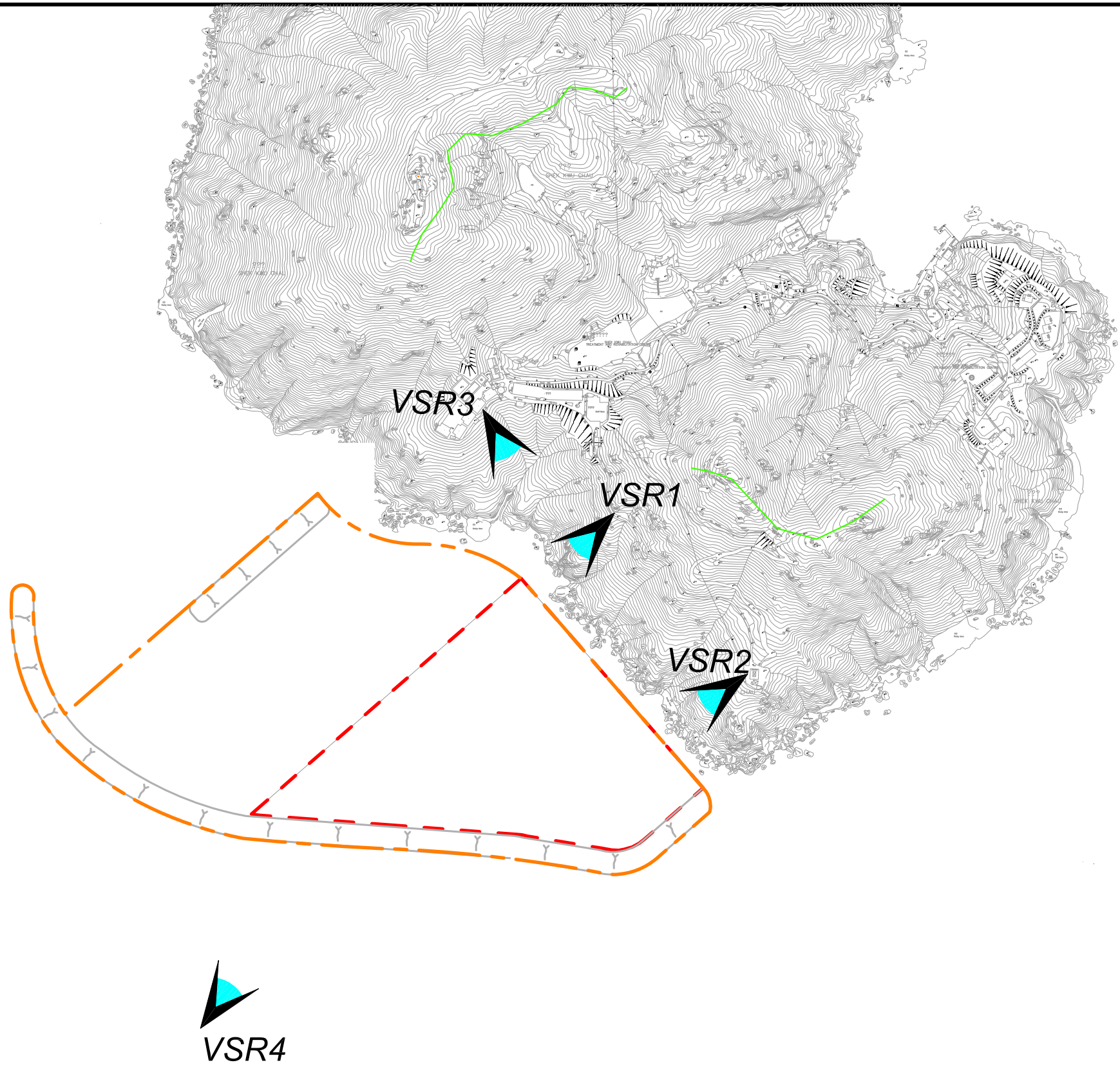


LEGEND:

- SITE BOUNDARY
- PROPOSED WORKS
- ZONE OF VISUAL INFLUENCE
- VISUAL SENSITIVE RECEIVER
- VSR1 FOOTPATH ALONG THE HILL
- VSR2 SHUN HOUSE
- VSR3 ADMINISTRATION & RESIDENTIAL BUILDING CLUSTER
- VSR4 SEA



\$DATE\$ \$USER\$ \$FILE\$



AGREEMENT NO. CE 29/2008 (EP)  
 ENGINEERING INVESTIGATION AND ENVIRONMENTAL STUDIES FOR INTEGRATED WASTE MANAGEMENT FACILITIES PHASE 1 - FEASIBILITY STUDY  
**IWMF AT THE ARTIFICIAL ISLAND NEAR SKC - VISUAL SENSITIVE RECEIVER PLAN (SHEET 1 OF 2)**

SCALE	A3 1:5000	DATE	DEC 2010
CHECK	—	DRAWN	—
JOB No.	—	DRAWING No.	FIGURE 10b.5
		REV	—