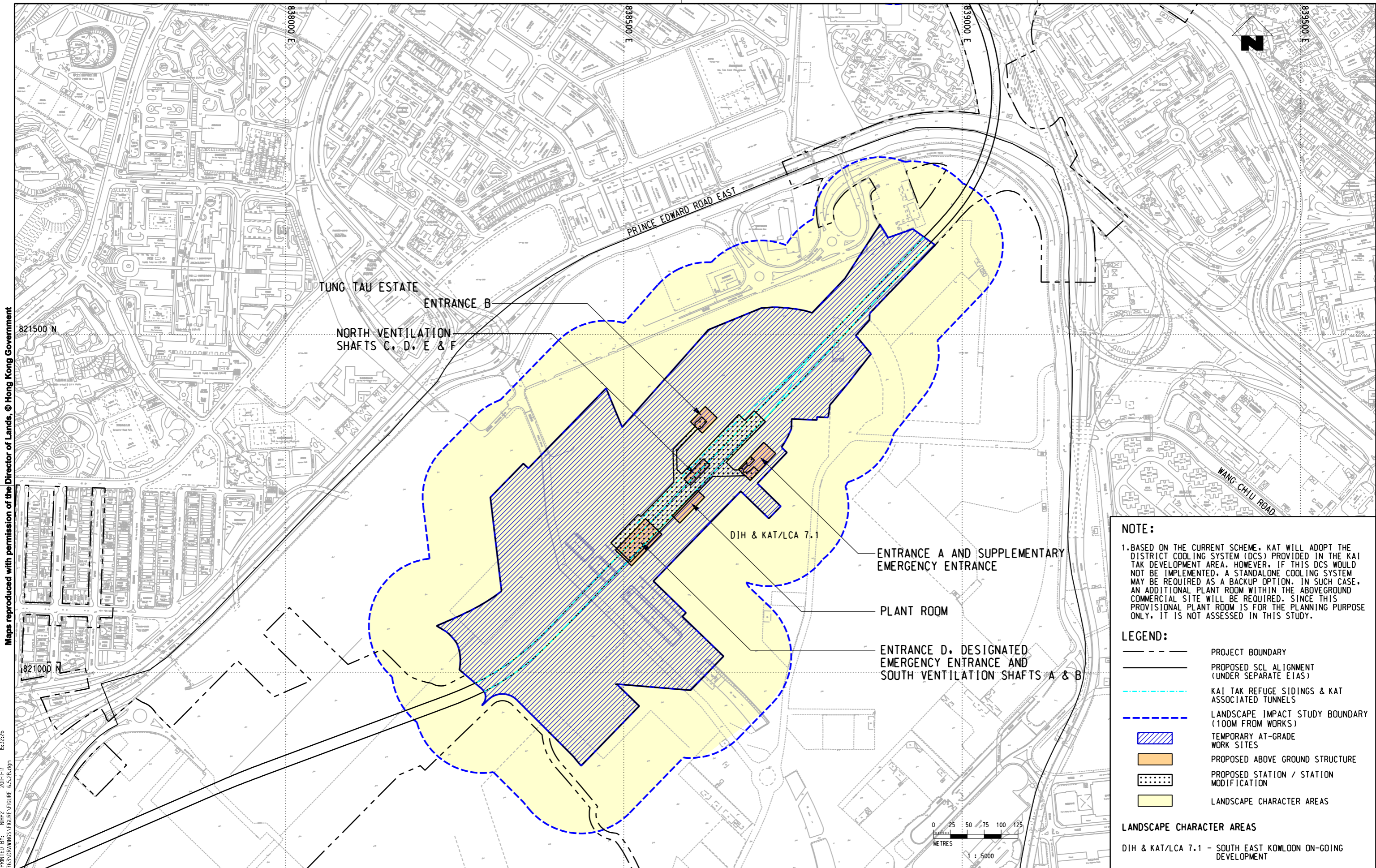


Maps reproduced with permission of the Director of Lands, © Hong Kong Government

Plot: D:\MTR\PROJECTS\NEX\NEX213\DRAWINGS\FIGURE 6.5.2B.dgn
 Model Name: NEX213_021117.dwg
 Date: 15/3/2012



NOTE:
 1. BASED ON THE CURRENT SCHEME, KAT WILL ADOPT THE DISTRICT COOLING SYSTEM (DCS) PROVIDED IN THE KAI TAK DEVELOPMENT AREA. HOWEVER, IF THIS DCS WOULD NOT BE IMPLEMENTED, A STANDALONE COOLING SYSTEM MAY BE REQUIRED AS A BACKUP OPTION. IN SUCH CASE, AN ADDITIONAL PLANT ROOM WITHIN THE ABOVEGROUND COMMERCIAL SITE WILL BE REQUIRED. SINCE THIS PROVISIONAL PLANT ROOM IS FOR THE PLANNING PURPOSE ONLY, IT IS NOT ASSESSED IN THIS STUDY.

LEGEND:

- PROJECT BOUNDARY
- PROPOSED SCL ALIGNMENT (UNDER SEPARATE EIAs)
- KAI TAK REFUGE SIDINGS & KAT ASSOCIATED TUNNELS
- LANDSCAPE IMPACT STUDY BOUNDARY (100M FROM WORKS)
- ▨ TEMPORARY AT-GRADE WORK SITES
- PROPOSED ABOVE GROUND STRUCTURE
- ⋯ PROPOSED STATION / STATION MODIFICATION
- LANDSCAPE CHARACTER AREAS

LANDSCAPE CHARACTER AREAS
 DIH & KAT/LCA 7.1 - SOUTH EAST KOWLOON ON-GOING DEVELOPMENT

DRAW: NHP DESIGNED: LCLL CHECKED: LCLL APPROVED: IMW DATE: 02/NOV/2011								SHATIN TO CENTRAL LINK 				TITLE NEX 2213 - EIA STUDY FOR SCL (HHS) LANDSCAPE AND VISUAL IMPACT ASSESSMENT BASELINE LANDSCAPE CHARACTER AREAS - KAI TAK STATION							
DO NOT SCALE DRAWINGS. ALL DIMENSIONS SHALL BE VERIFIED ON SITE. © MTR CORPORATION LIMITED 2008. COPYRIGHT IN RESPECT OF THIS DRAWING / DOCUMENT IS OWNED BY THE MTR CORPORATION LIMITED OF HONG KONG. NO REPRODUCTION OF THE DRAWING / DOCUMENT OR ANY PART BY WHATEVER MEANS IS PERMITTED WITHOUT THE PRIOR WRITTEN CONSENT OF THE MTR CORPORATION LIMITED.				ORIGINATOR:				CADD REF:				SCALE: 1 : 5000 (A3) FIGURE NO: FIGURE 6.5.2 REV: B							
REV	DESCRIPTION	BY	DATE	APPROVED	REV	DESCRIPTION	BY	DATE	APPROVED	REV	DESCRIPTION	BY	DATE	APPROVED	REV	DESCRIPTION	BY	DATE	APPROVED

FIGURE 6.5.2B.dgn