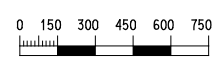


**圖例:**  
**LEGEND:**

- 擬建沙中綫走綫 (由其他環境影響評估報告涵蓋)  
Proposed SCL Alignment (Under Separate EIAs)
- 因本項目而作出修改的沙中綫 (大圍至紅磡段) 走綫  
SCL (TAW-HUH) Alignment to be Modified under the Project
- 啟德存車綫及啟德站相關隧道  
Kai Tak Refuge Sidings & KAT Associated Tunnels
- 紅磡列車停放處軌道  
HHS Tracks
- 擬建車站/車站改造  
Proposed Station / Station Modification
- 紅磡列車停放處  
Hung Hom Stabling Sidings



\$PLOTDRVL\$  
 \$MODELNAME\$  
 \$FILENAME\$  
 \$DATE\$  
 \$TIME\$  
 \$USERS\$  
 \$REV\$

				DRAWN AC DESIGNED LK CHECKED TC APPROVED FC DATE 10/11		 <b>SHATIN TO CENTRAL LINK</b>		TITLE NEX2206 - 沙中綫(紅磡列車停放處) 項目俯視圖 NEX2206 - SCL (HHS) Overview of the Project	
				 ORIGINATOR <b>ARUP</b> Ove Arup & Partners Hong Kong Limited				SCALE 1:30000 (A3)	
								DRAWING NO. 圖 1.1	
								REV. A	
REV	DESCRIPTION	BY	DATE	APPROVED	DESCRIPTION	BY	DATE	APPROVED	
A	FIRST ISSUE	AC	10/11	FC					

DO NOT SCALE DRAWINGS. ALL DIMENSIONS SHALL BE VERIFIED ON SITE.  
 © MTR CORPORATION LIMITED 2008. COPYRIGHT IN RESPECT OF THIS DRAWING / DOCUMENT IS OWNED BY THE MTR CORPORATION LIMITED OF HONG KONG. NO REPRODUCTION OF THE DRAWING / DOCUMENT OR ANY PART BY WHATEVER MEANS IS PERMITTED WITHOUT THE PRIOR WRITTEN CONSENT OF THE MTR CORPORATION LIMITED.