



R01  
OI MAN ESTATE



R02  
PARC PALAIS



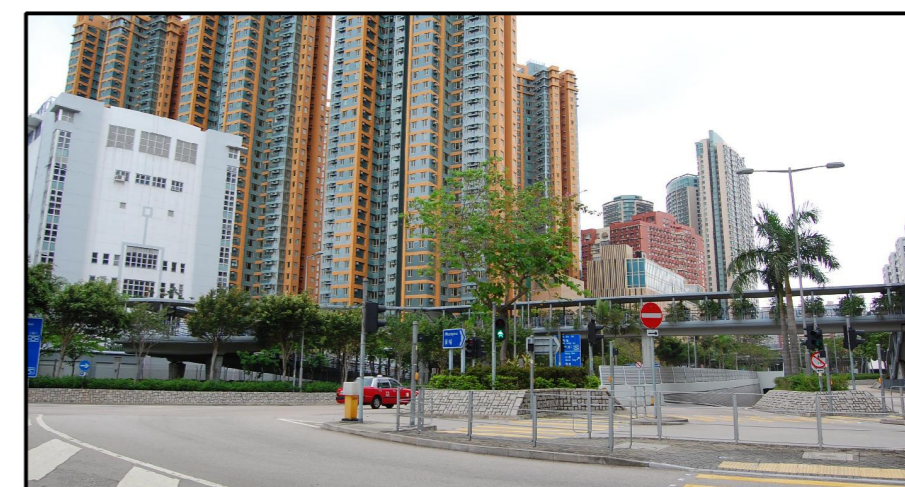
R03  
WYLIE COURT



R04  
PROPERTY DEVELOPMENT AT FUTURE HO MAN TIN STATION



R05  
METROPOLIS RESIDENCE



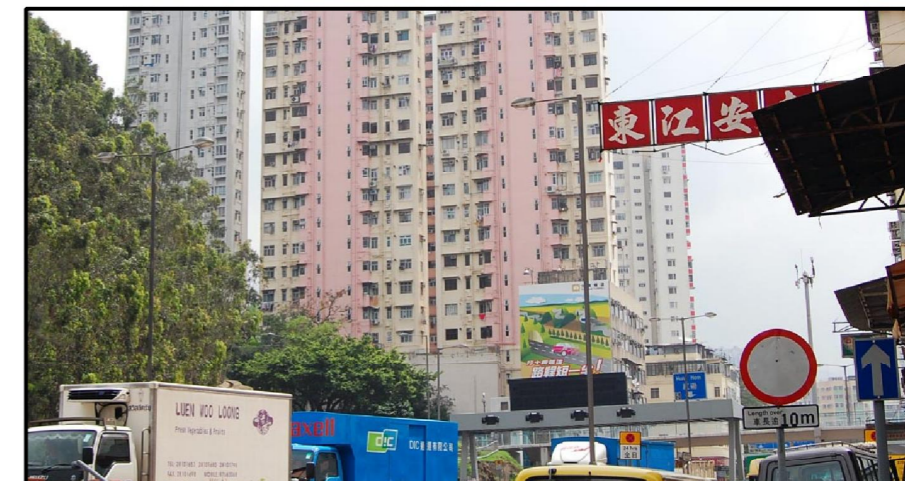
R06  
HARBOUR PLACE



R07  
ROYAL PENINSULA



R08  
MEDIUM RISE CENTRAL HUNG HOM RESIDENCE



R09  
YEE FU AND WAI KING BUILDING

REV	DESCRIPTION	BY	DATE	APPROVED	REV	DESCRIPTION	BY	DATE	APPROVED

DRAWN	YJP	 <b>MTR</b>	<b>SHATIN TO CENTRAL LINK</b>  <b>AECOM</b>	TITLE	NEX/2213 EIA STUDY FOR SCL (MKK - HUH) PHOTOS OF KEY VISUALLY SENSITIVE RECEIVERS (VSR) SHEET 3 OF 4	
DESIGNED	---			ORIGINATOR	SCALE	N.T.S.
CHECKED	---			CADD REF.	FIGURE NO.	NEX2213/C/361/ENS/M54/543
APPROVED	---				REV.	A
DATE	10/AUG/2010	<small>DO NOT SCALE DRAWINGS. ALL DIMENSIONS SHALL BE VERIFIED ON SITE.                  © MTR CORPORATION LIMITED 2008. COPYRIGHT IN RESPECT OF THIS DRAWING / DOCUMENT IS OWNED BY THE MTR CORPORATION LIMITED OF HONG KONG. NO REPRODUCTION OF THE DRAWING / DOCUMENT OR ANY PART BY WHATEVER MEANS IS PERMITTED WITHOUT THE PRIOR WRITTEN CONSENT OF THE MTR CORPORATION LIMITED.</small>				