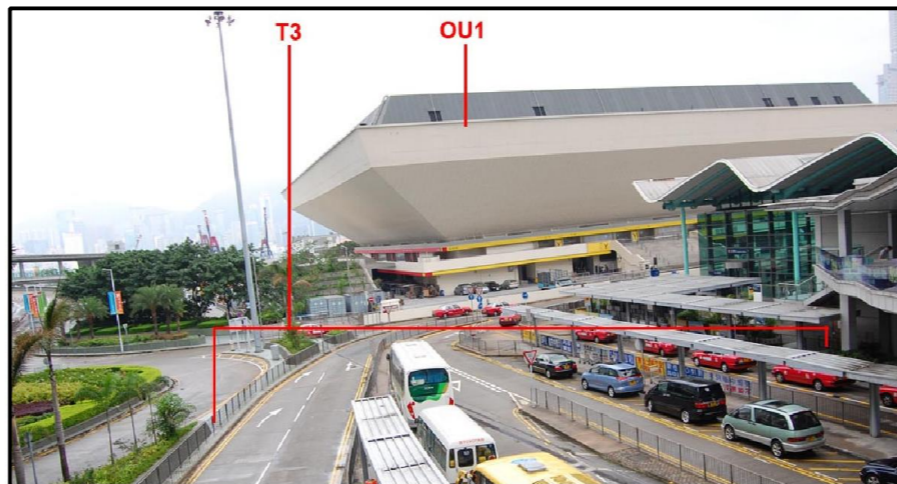




T1 & T2 & C3
HUNG HOM STATION CARPARK & MTR HUNG HOM BUILDING



T3 & OU1
TRAVELLERS ON CHEONG WAN ROAD & HONG KONG COLISEUM



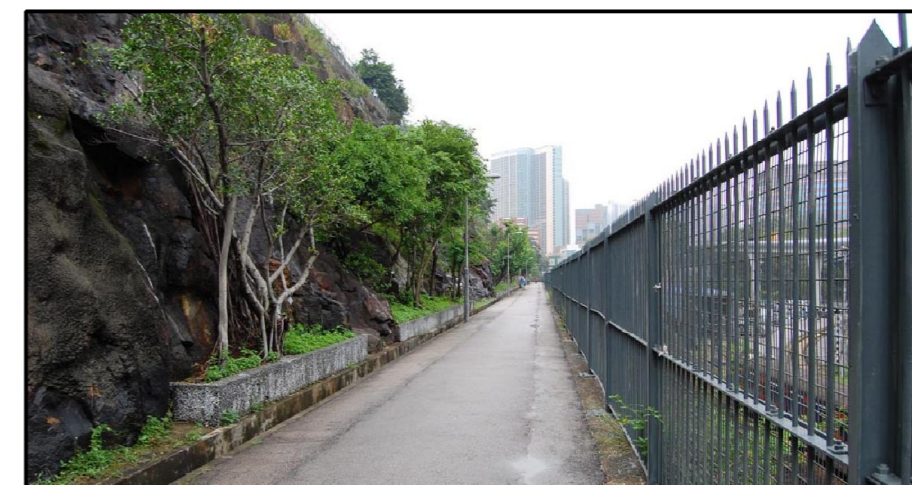
T4
TRAVELLERS ON SALISBURY FLYOVER



T5
TRAVELLERS ON MTR EAST RAIL LINE



T6
TRAVELLERS IN VICTORIA HARBOUR



T7
OI SEN PATH



T8
FOOTBRIDGE LINKAGE TO HUNG HOM STATION

PLOT DRY: F:\usr\set\mtr\p\p\DRIVER\WINDOWS\33 COL\016.dgn
 MODELNAME: MTR\PROJECTS\G0050763\DRAWINGS\0000\X\ENR\NEX2213\C_361_ENR_M54_544A.dgn
 FILENAME: 143325
 2011-8

REV	DESCRIPTION	BY	DATE	APPROVED	REV	DESCRIPTION	BY	DATE	APPROVED

DRAWN	YJP
DESIGNED	---
CHECKED	---
APPROVED	---
DATE	10/AUG/2010

MTR

SHATIN TO CENTRAL LINK

AECOM

ORIGINATOR

CADD REF. NEX2213_C_361_ENR_M54_544A.dgn

TITLE		NEX/2213	
EIA STUDY FOR SCL (MKK - HUH)		PHOTOS OF KEY VISUALLY SENSITIVE RECEIVERS (VSR)	
SHEET 4 OF 4			
SCALE	FIGURE NO.	REV.	
N.T.S.	NEX2213/C/361/ENS/M54/544	A	