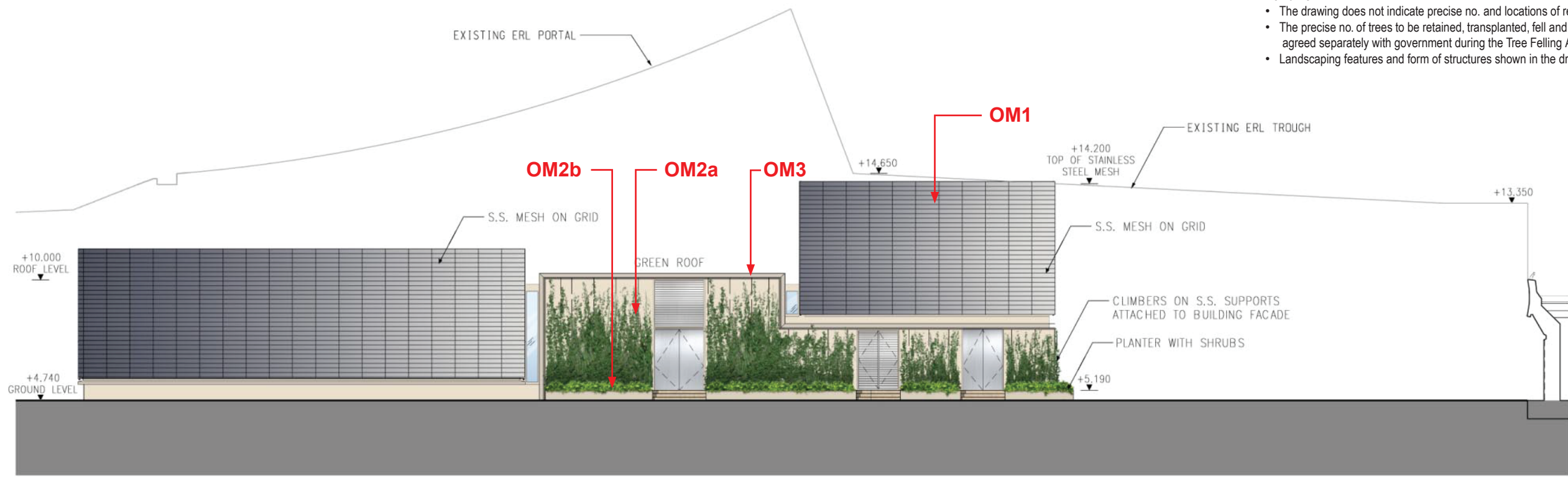
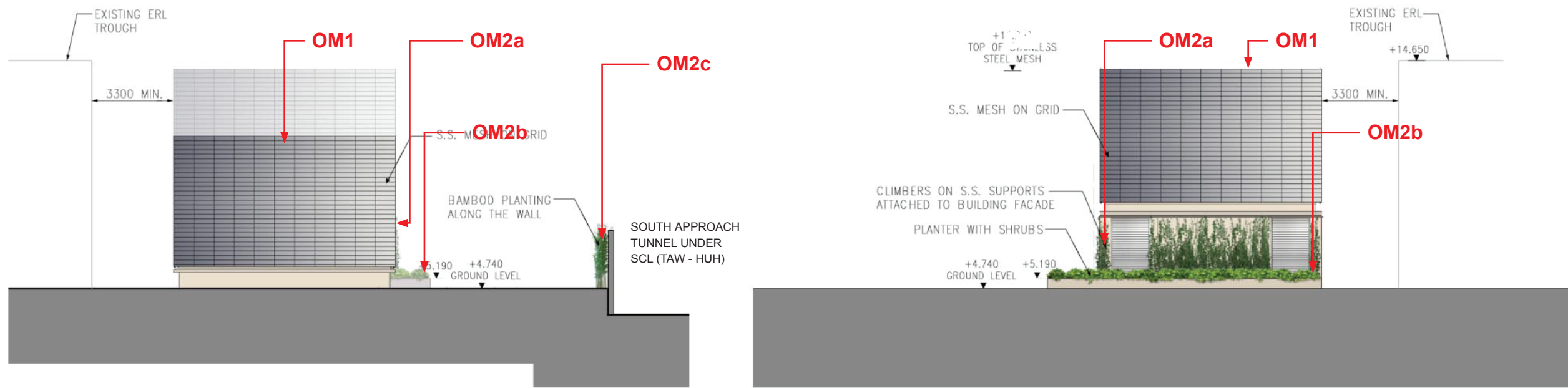


- Remarks**
- The drawing does not indicate precise no. and locations of retained trees and compensatory trees.
 - The precise no. of trees to be retained, transplanted, fell and compensated shall be determined and agreed separately with government during the Tree Felling Application process under ETWB TC(W) No. 3/2006.
 - Landscaping features and form of structures shown in the drawing are indicative only.



ELEVATION A
SCALE 1 : 100



ELEVATION B
SCALE 1 : 100

ELEVATION C
SCALE 1 : 100



				DRAWN: --- DESIGNED: --- CHECKED: --- APPROVED: --- DATE: OCT 2010 <small>DO NOT SCALE DRAWINGS. ALL DIMENSIONS SHALL BE VERIFIED ON SITE. © MTR CORPORATION LIMITED 2008 COPYRIGHT IN RESPECT OF THIS DRAWING / DOCUMENT IS OWNED BY THE MTR CORPORATION LIMITED OF HONG KONG. NO REPRODUCTION OF THE DRAWING / DOCUMENT OR ANY PART BY WHATEVER MEANS IS PERMITTED WITHOUT THE PRIOR WRITTEN CONSENT OF THE MTR CORPORATION LIMITED.</small>						TITLE NEX/2213 EIA STUDY FOR SCL (MKK - HUH) COOLING TOWER ELEVATION	
				ORIGINATOR 				SCALE: N.T.S. FIGURE NO.: NEX2213/C/361/ENS/M54/558 REV. A			
REV	DESCRIPTION	BY	DATE	APPROVED	REV	DESCRIPTION	BY	DATE	APPROVED	CADD REF.	