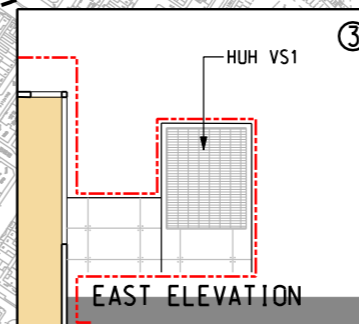
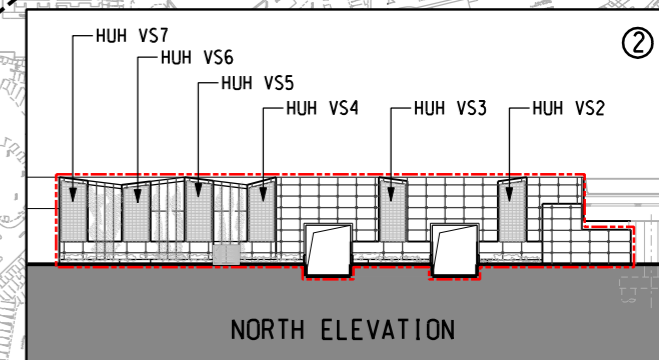
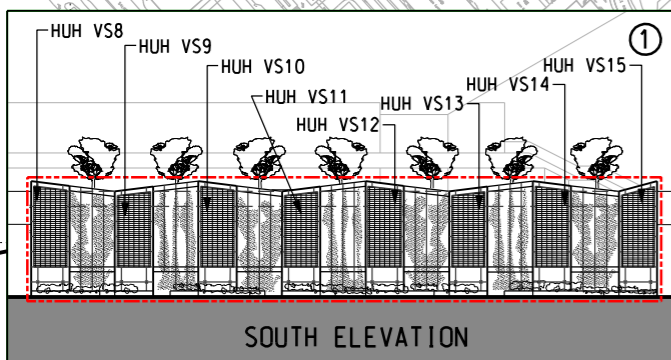


Maps reproduced with permission of the Director of Lands, © Hong Kong Government

	REPRESENTATIVE NOISE SENSITIVE RECEIVER	OPERATION PHASE		
		ABN - RAIL	GBN - RAIL	FIXED SOURCE
OM1a	SHUN MAN HOUSE (SOUTH BLOCK), OI MAN ESTATE	Y		
OM1b	SHUN MAN HOUSE (NORTH BLOCK), OI MAN ESTATE	Y		
OM2	PARC PALAIS, BLOCK 6	Y		
OM4b	CARMEL SECONDARY SCHOOL (NORTH BLOCK)	Y		
HH1	WYLIE COURT, BLOCK C	Y		
HH2	WING FUNG BUILDING	Y	Y	
HH3	THE HONG KONG POLYTECHNIC UNIVERSITY (POLYU) CHEUNG ON TAK LECTURE THEATER		Y	
HH4	ROYAL PENINSULA BLOCK 2			Y
HH5	POLYU PHASE 8		Y	
HH7	THE METROPOLIS RESIDENCE		Y	Y
HH9b	HARBOURFRONT HORIZON			Y



- LEGEND:**
- 300m STUDY AREA
  - PROPOSED STATION OF SCL
  - OM1
  - HH7
- ABBREVIATIONS:**
- NOV NORTH VENTILATION BUILDING, PLANT ROOMS AND EMERGENCY ACCESS
  - SCL (MKK - HUH) SHATIN TO CENTRAL LINK - MONG KOK EAST TO HUNG HOM SECTION
  - SCL (HUH - ADM) SHATIN TO CENTRAL LINK - HUNG HOM TO ADMIRALTY SECTION



PLOT DRY: F:\us\mset\NTR\PI\OTRI\EN\WINDOWS\X3 COL\016.dwg  
 MODEL NAME: 1615\_42  
 FILE NAME: mtr\objects\60050163\DRAWINGS\000\X\ENR\MEX2213\_C\_361\_ENS\_M52\_601A.dgn

REV	DESCRIPTION	BY	DATE	APPROVED	REV	DESCRIPTION	BY	DATE	APPROVED

DRAWN	YJP
DESIGNED	---
CHECKED	LCR
APPROVED	---
DATE	11/AUG/2010

**SHATIN TO CENTRAL LINK**

CADD REF. NEX2213\_C\_361\_ENS\_M52\_601A.dgn

**NEX/2213**  
**EIA STUDY FOR SCL (MKK - HUH)**  
**LOCATIONS OF REPRESENTATIVE NOISE SENSITIVE RECEIVERS FOR OPERATIONAL PHASE (SCL - MONG KOK EAST TO HUNG HOM SECTION)**

SCALE 1 : 6000 (A3)    FIGURE NO. NEX2213/C/361/ENS/M52/601    REV. A