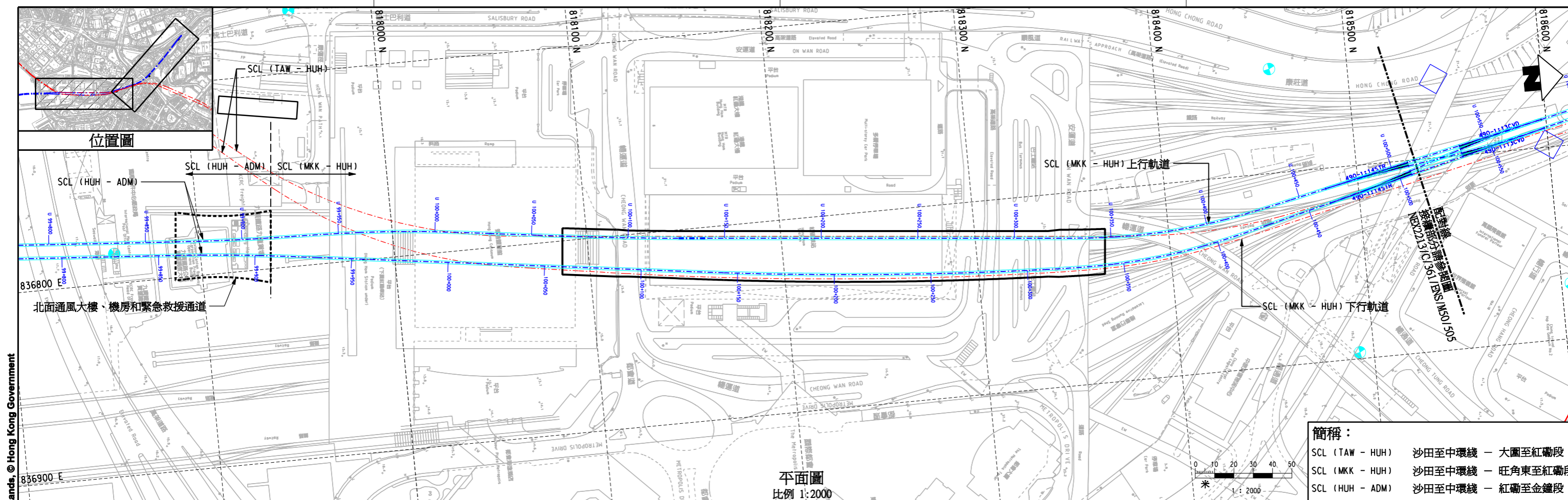


Maps reproduced with permission of the Director of Lands, © Hong Kong Government

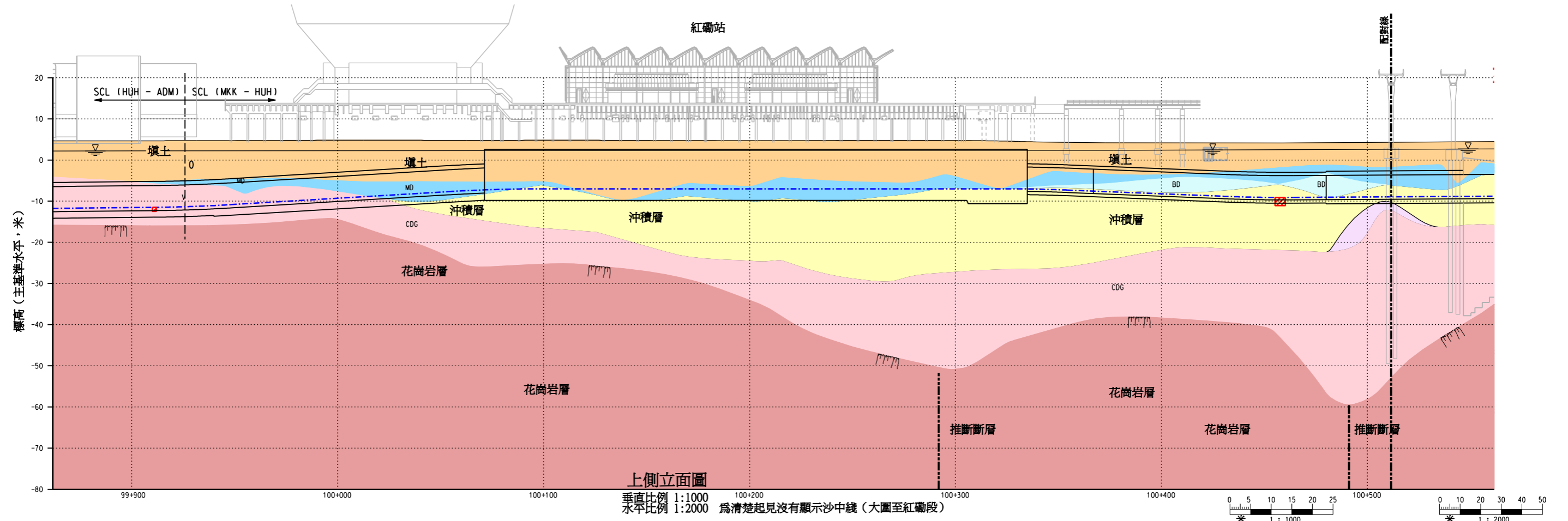
Plot: D:\usr\mset\NTR\PI\DRIVER\WINDOWS\13 COL\016.dgn  
 Model: NEX2213/C/361/ENS/M50/504A.dgn  
 Date: 2011-01-27 09:07  
 User: M50/504A



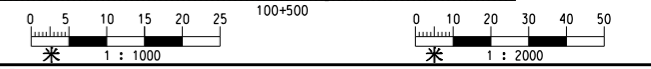
平面圖  
比例 1:2000

簡稱：

SCL (TAW - HUH)	沙田至中環綫 - 大圍至紅磡段
SCL (MKK - HUH)	沙田至中環綫 - 旺角東至紅磡段
SCL (HUH - ADM)	沙田至中環綫 - 紅磡至金鐘段



上側立面圖  
 垂直比例 1:1000  
 水平比例 1:2000  
 為清楚起見沒有顯示沙中綫 (大圍至紅磡段)



REV	DESCRIPTION	BY	DATE	APPROVED	REV	DESCRIPTION	BY	DATE	APPROVED

DRAWN	WYY		ORIGINATOR 
DESIGNED	---		
CHECKED	LCR		
APPROVED	---		
DATE	26/JAN/2011	CADD REF. NEX2213_C_361_ENS_M50_504A.dgn	

TITLE	
沙田至中環綫(旺角東至紅磡段) 環境評估研究 本工程項目之首選走綫(沙中綫 - 旺角東至紅磡段) 第1頁 共2頁	
SCALE	FIGURE NO.
1:2000 (A3)	NEX2213/C/361/ENS/M50/504
REV.	A