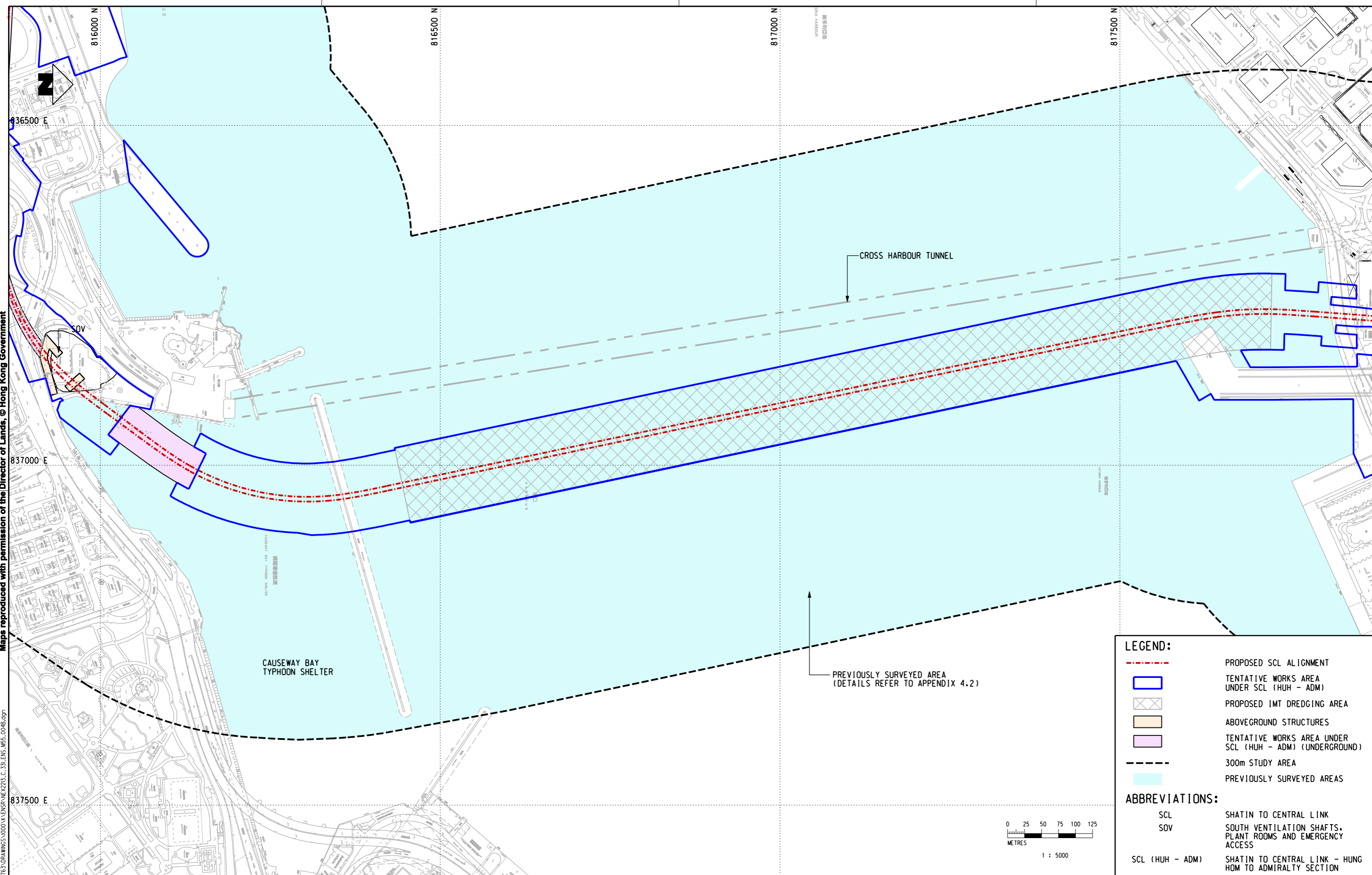


Maps reproduced with permission of the Director of Lands, © Hong Kong Government

PLOT DRY: M:\PROJECTS\60650763\CAD_ADMIN\PLOTDRIVER\WINDOWS\A3_COLOUR.dwt
 MODELNAME: NEX/2213
 FILENAME: M:\PROJECTS\60650763\DRAWINGS\000\A\ENR\M55\2213_C_331_ENR_M55_004B.dgn

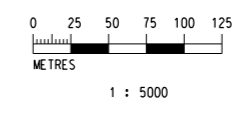


LEGEND:

- - - PROPOSED SCL ALIGNMENT
- TENTATIVE WORKS AREA UNDER SCL (HUH - ADM)
- PROPOSED IMT DREDGING AREA
- ABOVEGROUND STRUCTURES
- TENTATIVE WORKS AREA UNDER SCL (HUH - ADM) (UNDERGROUND)
- 300m STUDY AREA
- PREVIOUSLY SURVEYED AREAS

ABBREVIATIONS:

- SCL SHATIN TO CENTRAL LINK
- SOV SOUTH VENTILATION SHAFTS, PLANT ROOMS AND EMERGENCY ACCESS
- SCL (HUH - ADM) SHATIN TO CENTRAL LINK - HUNG HOM TO ADMIRALTY SECTION



REV	DESCRIPTION	BY	DATE	APPROVED	REV	DESCRIPTION	BY	DATE	APPROVED

DRAWN	WK
DESIGNED	---
CHECKED	LCR
APPROVED	---
DATE	06/AUG/2011

MTR

SHATIN TO CENTRAL LINK

AECOM

CADD REF. NEX2213_C_331_ENS_M55_004B.dgn

TITLE
NEX/2213
EIA STUDY FOR SCL (HUH - ADM)
PREVIOUSLY SURVEYED AREAS IN VICTORIA HARBOUR

SCALE 1 : 5000 (A3) FIGURE NO. NEX2213/C/331/ENS/M55/004 REV. B

