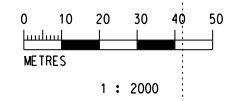


MATCH LINE
 FOR CONTINUATION
 SEE DWG NEX2213/C/331/ENS/M58/020



| AS-BUILT CO-ORDINATES FOR SAMPLING LOCATIONS | | |
|--|-----------|-----------|
| LOCATION ID | EASTING | NORTHING |
| 2209/SCL/EDH230 | 836864.48 | 817893.25 |
| 2211/SCL/EDH026 | 836806.18 | 817785.66 |
| 2211/SCL/EDH123P | 836783.49 | 817923.59 |
| 2211/SCL/EDH001 | 836804.26 | 817750.08 |
| 2211/SCL/EDH002 | 836744.86 | 817687.22 |
| 2211/SCL/EDH003 | 836761.60 | 817640.77 |
| 2211/SCL/EDH004 | 836762.23 | 817540.59 |
| 2211/SCL/VC001(1) | 836776.27 | 817780.65 |
| 2211/SCL/VC002(1) | 836772.92 | 817679.66 |
| 2211/SCL/VC003(1) | 836789.03 | 817579.97 |

LEGEND:

- - - PROPOSED SCL ALIGNMENT
- PROJECT BOUNDARY FOR SCL (HUH - ADM)
- AS-BUILT DRILLHOLE SAMPLING LOCATION
- AS-BUILT VIBROCORE AND SURFACE SEDIMENT SAMPLING LOCATION
- WORKS AREA(S) WHERE THERE ARE POTENTIAL SEDIMENT EXCAVATION OR DREDGING
- SECTION A1 HUNG HOM LAND SECTION
- SECTION A2 MARINE SECTION

ABBREVIATIONS:

- SCL SHATIN TO CENTRAL LINK
- HUH HUNG HOM STATION
- NOV NORTH VENTILATION BUILDING, PLANT ROOMS AND EMERGENCY ACCESS
- SCL (MKK - HUH) SHATIN TO CENTRAL LINK - MONG KOK EAST TO HUNG HOM SECTION
- SCL (HUH - ADM) SHATIN TO CENTRAL LINK - HUNG HOM TO ADMIRALTY SECTION

| REV | DESCRIPTION | BY | DATE | APPROVED | REV | DESCRIPTION | BY | DATE | APPROVED |
|-----|-------------|----|------|----------|-----|-------------|----|------|----------|
| | | | | | | | | | |

| | |
|----------|-------------|
| DRAWN | LX |
| DESIGNED | --- |
| CHECKED | LCR |
| APPROVED | --- |
| DATE | 19/NOV/2010 |

MTR

SHATIN TO CENTRAL LINK

AECOM

CADD REF. NEX2213.C_331.ENS_M58_019A.dgn

TITLE

NEX/2213
EIA STUDY FOR SCL (HUH - ADM)
AS-BUILT SEDIMENT SAMPLING LOCATIONS
SHEET 1 OF 8

SCALE 1 : 2000 (A3) FIGURE NO. NEX2213/C/331/ENS/M58/019 REV. A

Maps reproduced with permission of the Director of Lands, © Hong Kong Government

Plot: R:\us\mshet\mtr\p\otriver\windows\33\col\016.dgn
 Model Name: NEX2213_C_331_ENS_M58_021A.dgn
 File Name: NEX2213_C_331_ENS_M58_021A.dgn



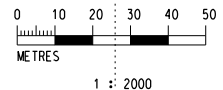
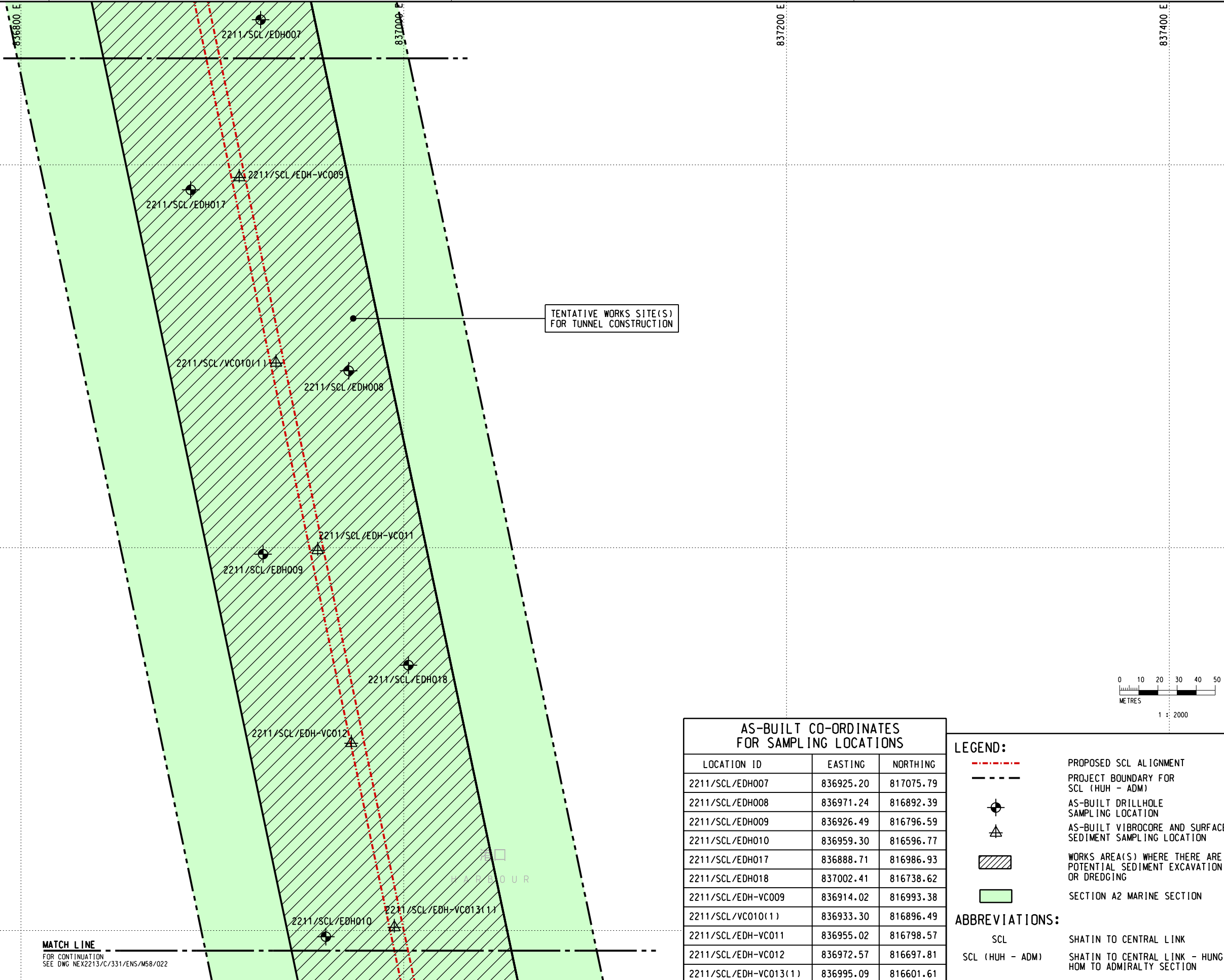
MATCH LINE
 FOR CONTINUATION
 SEE DWG NEX2213/C/331/ENS/M58/020

MATCH LINE
 FOR CONTINUATION
 SEE DWG NEX2213/C/331/ENS/M58/022

817000 N

816800 N

816600 N



| AS-BUILT CO-ORDINATES FOR SAMPLING LOCATIONS | | |
|--|-----------|-----------|
| LOCATION ID | EASTING | NORTHING |
| 2211/SCL/EDH007 | 836925.20 | 817075.79 |
| 2211/SCL/EDH008 | 836971.24 | 816892.39 |
| 2211/SCL/EDH009 | 836926.49 | 816796.59 |
| 2211/SCL/EDH010 | 836959.30 | 816596.77 |
| 2211/SCL/EDH017 | 836888.71 | 816986.93 |
| 2211/SCL/EDH018 | 837002.41 | 816738.62 |
| 2211/SCL/EDH-VC009 | 836914.02 | 816993.38 |
| 2211/SCL/VC010(1) | 836933.30 | 816896.49 |
| 2211/SCL/EDH-VC011 | 836955.02 | 816798.57 |
| 2211/SCL/EDH-VC012 | 836972.57 | 816697.81 |
| 2211/SCL/EDH-VC013(1) | 836995.09 | 816601.61 |

LEGEND:

- - - - - PROPOSED SCL ALIGNMENT
- PROJECT BOUNDARY FOR SCL (HUH - ADM)
- AS-BUILT DRILLHOLE SAMPLING LOCATION
- AS-BUILT VIBROCORE AND SURFACE SEDIMENT SAMPLING LOCATION
- WORKS AREA(S) WHERE THERE ARE POTENTIAL SEDIMENT EXCAVATION OR DREDGING
- SECTION A2 MARINE SECTION

ABBREVIATIONS:

- SCL SHATIN TO CENTRAL LINK
- SCL (HUH - ADM) SHATIN TO CENTRAL LINK - HUNG HOM TO ADMIRALTY SECTION

| REV | DESCRIPTION | BY | DATE | APPROVED | REV | DESCRIPTION | BY | DATE | APPROVED |
|-----|-------------|----|------|----------|-----|-------------|----|------|----------|
| | | | | | | | | | |

| | |
|----------|-------------|
| DRAWN | LX |
| DESIGNED | --- |
| CHECKED | LCR |
| APPROVED | --- |
| DATE | 19/NOV/2010 |

MTR

SHATIN TO CENTRAL LINK

AECOM

CADD REF. NEX2213_C_331_ENS_M58_021A.dgn

TITLE

NEX/2213
 EIA STUDY FOR SCL (HUH - ADM)
 AS-BUILT SEDIMENT SAMPLING LOCATIONS
 SHEET 3 OF 8

SCALE 1 : 2000 (A3) FIGURE NO. NEX2213/C/331/ENS/M58/021 REV. A

LEGEND:

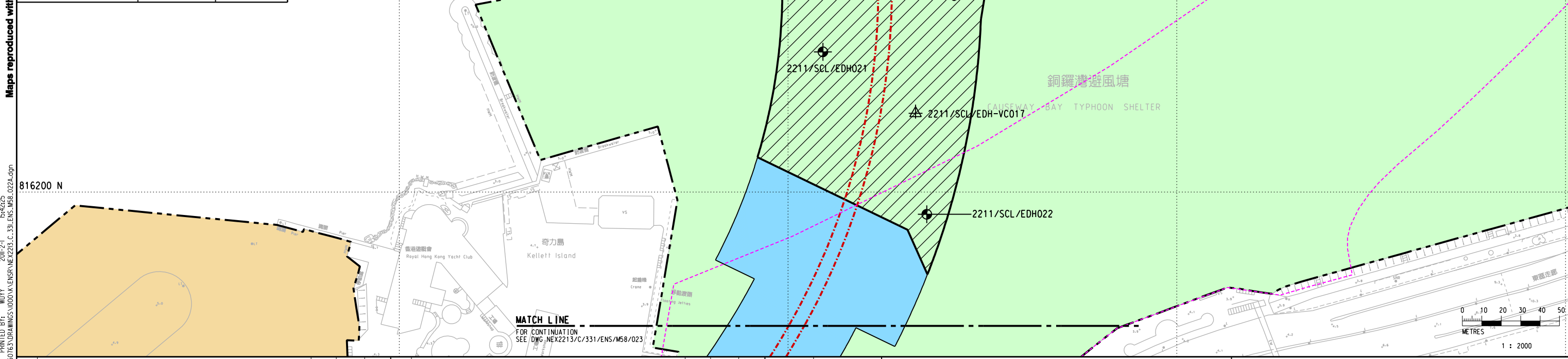
- PROPOSED SCL ALIGNMENT
- PROJECT BOUNDARY FOR SCL (HUH - ADM)
- TEMPORARY RECLAMATION AREA UNDER WDII / CWB LAYOUT LINE
- AS-BUILT DRILLHOLE SAMPLING LOCATION
- AS-BUILT VIBROCORE AND SURFACE SEDIMENT SAMPLING LOCATION
- WORKS AREA(S) WHERE THERE ARE POTENTIAL SEDIMENT EXCAVATION OR DREDGING
- WORKS AREA(S) COVERED UNDER EIA STUDY FOR SCL PROTECTION WORKS AT CAUSEWAY BAY TYPHOON SHELTER
- SECTION A2 MARINE SECTION
- SECTION B POC TO EAST OF EXH

ABBREVIATIONS:

SCL SHATIN TO CENTRAL LINK
 SCL (HUH - ADM) SHATIN TO CENTRAL LINK - HUNG HOM TO ADMIRALTY SECTION

AS-BUILT CO-ORDINATES FOR SAMPLING LOCATIONS

| LOCATION ID | EASTING | NORTHING |
|-----------------------|-----------|-----------|
| 2211/SCL/EDH010 | 836959.30 | 816596.77 |
| 2211/SCL/EDH011 | 837049.56 | 816513.69 |
| 2211/SCL/EDH012 | 837069.71 | 816420.58 |
| 2211/SCL/EDH013 | 837096.30 | 816335.50 |
| 2211/SCL/EDH019 | 836969.10 | 816543.05 |
| 2211/SCL/EDH021 | 837017.94 | 816272.21 |
| 2211/SCL/EDH022 | 837071.38 | 816188.57 |
| 2211/SCL/EDH-VC013(1) | 836995.09 | 816601.61 |
| 2211/SCL/VC014(1) | 837014.41 | 816503.88 |
| 2211/SCL/EDH-VC015 | 837043.95 | 816411.01 |
| 2211/SCL/EDH-VC016(1) | 837032.93 | 816327.95 |
| 2211/SCL/EDH-VC017 | 837065.61 | 816240.57 |

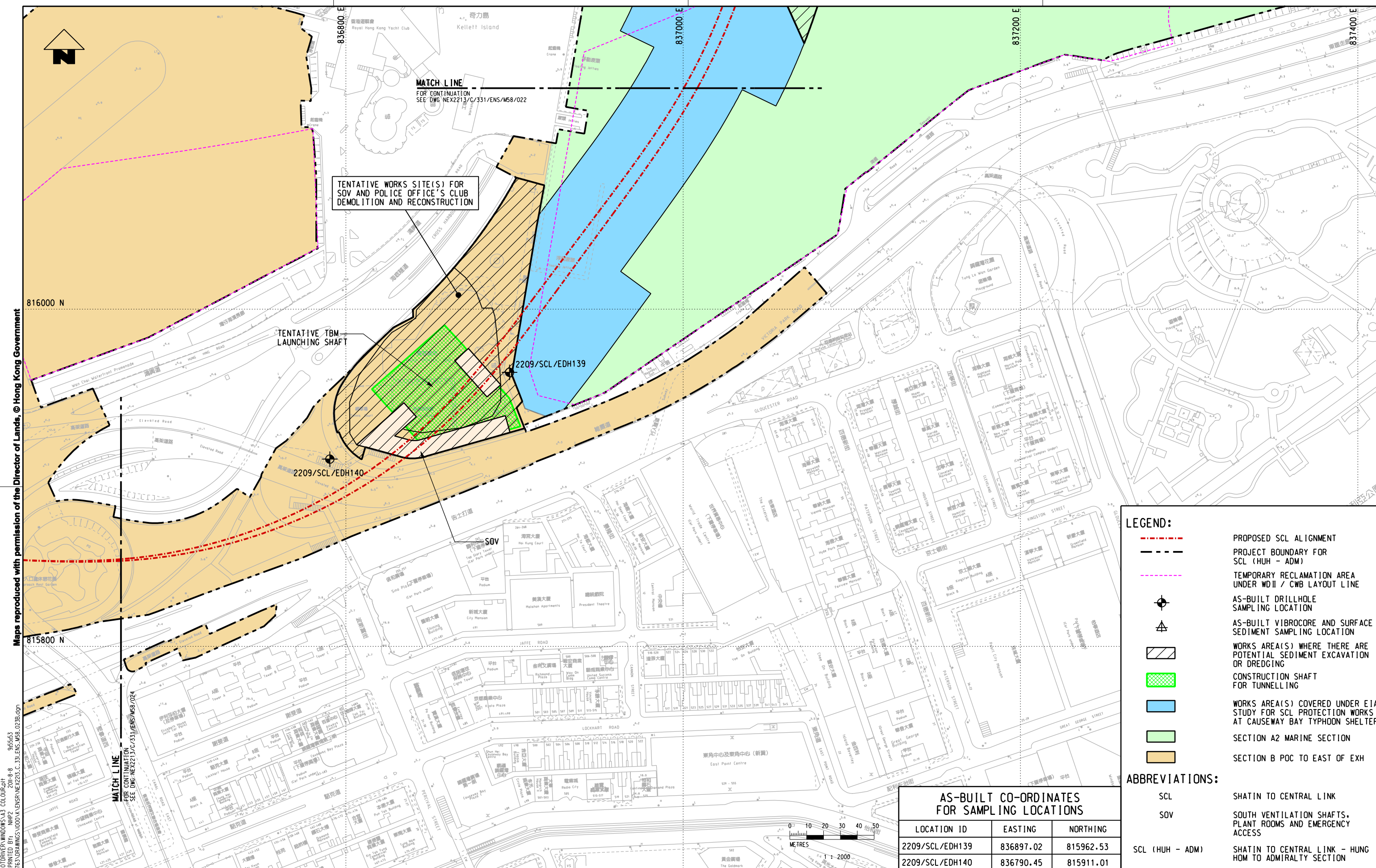


| REV | DESCRIPTION | BY | DATE | APPROVED | REV | DESCRIPTION | BY | DATE | APPROVED |
|-----|-------------|----|------|----------|-----|-------------|----|------|----------|
| | | | | | | | | | |
| | | | | | | | | | |
| | | | | | | | | | |
| | | | | | | | | | |
| | | | | | | | | | |

| | | |
|---|-------------|---------------------------------------|
| DRAWN | LX | SHATIN TO CENTRAL LINK |
| DESIGNED | --- | |
| CHECKED | LCR | |
| APPROVED | --- | |
| DATE | 19/NOV/2010 | |
| <small>DO NOT SCALE DRAWINGS. ALL DIMENSIONS SHALL BE VERIFIED ON SITE. (C) MTR CORPORATION LIMITED 2008. COPYRIGHT IN RESPECT OF THIS DRAWING / DOCUMENT IS OWNED BY THE MTR CORPORATION LIMITED OF HONG KONG. NO REPRODUCTION OF THE DRAWING / DOCUMENT OR ANY PART BY WHATEVER MEANS IS PERMITTED WITHOUT THE PRIOR WRITTEN CONSENT OF THE MTR CORPORATION LIMITED.</small> | | ORIGINATOR |
| CADD REF. | | NEX2213_C_331_ENS_M58_022a.dgn |

| | |
|---|---------------------------|
| TITLE NEX/2213 EIA STUDY FOR SCL (HUH - ADM) AS-BUILT SEDIMENT SAMPLING LOCATIONS SHEET 4 OF 8 | |
| SCALE | 1 : 2000 (A3) |
| FIGURE NO. | NEX2213/C/331/ENS/M58/022 |
| REV. | A |

Maps reproduced with permission of the Director of Lands, © Hong Kong Government
 R:\us\msb\mtr\p\otriver\windows\33_col_018.dgn
 15:42:25
 PLOTTED BY: MTR
 MODEL NAME: MTR\Projects\GIS\Drawings\000\NEX2213_C_331_ENS_M58_022A.dgn
 FILE NAME:



LEGEND:

- PROPOSED SCL ALIGNMENT
- PROJECT BOUNDARY FOR SCL (HUH - ADM)
- TEMPORARY RECLAMATION AREA UNDER W02 / CWB LAYOUT LINE
- AS-BUILT DRILLHOLE SAMPLING LOCATION
- AS-BUILT VIBROCORE AND SURFACE SEDIMENT SAMPLING LOCATION
- WORKS AREA(S) WHERE THERE ARE POTENTIAL SEDIMENT EXCAVATION OR DREDGING
- CONSTRUCTION SHAFT FOR TUNNELLING
- WORKS AREA(S) COVERED UNDER EIA STUDY FOR SCL PROTECTION WORKS AT CAUSEWAY BAY TYPHOON SHELTER
- SECTION A2 MARINE SECTION
- SECTION B POC TO EAST OF EXH

ABBREVIATIONS:

- SCL SHATIN TO CENTRAL LINK
- SOV SOUTH VENTILATION SHAFTS, PLANT ROOMS AND EMERGENCY ACCESS
- SCL (HUH - ADM) SHATIN TO CENTRAL LINK - HUNG HOM TO ADMIRALTY SECTION

AS-BUILT CO-ORDINATES FOR SAMPLING LOCATIONS

| LOCATION ID | EASTING | NORTHING |
|-----------------|-----------|-----------|
| 2209/SCL/EDH139 | 836897.02 | 815962.53 |
| 2209/SCL/EDH140 | 836790.45 | 815911.01 |

Maps reproduced with permission of the Director of Lands, © Hong Kong Government

PLOT DRY: R:\us\msb\NTR\PILOTDRIVER\WINDOWS\33 COL\016.dgn
 DATE: 2011-8-8 9:55:53
 MODEL NAME: ME\PROJECTS\0000\03\DRAWINGS\000\NEX2213\C_331_ENS_M58_023B.dgn
 FILE NAME:

| REV | DESCRIPTION | BY | DATE | APPROVED | REV | DESCRIPTION | BY | DATE | APPROVED |
|-----|-------------|----|------|----------|-----|-------------|----|------|----------|
| | | | | | | | | | |

| | |
|----------|-------------|
| DRAWN | LX |
| DESIGNED | --- |
| CHECKED | LCR |
| APPROVED | --- |
| DATE | 06/AUG/2011 |

MTR

SHATIN TO CENTRAL LINK

AECOM

CADD REF. NEX2213_C_331_ENS_M58_023B.dgn

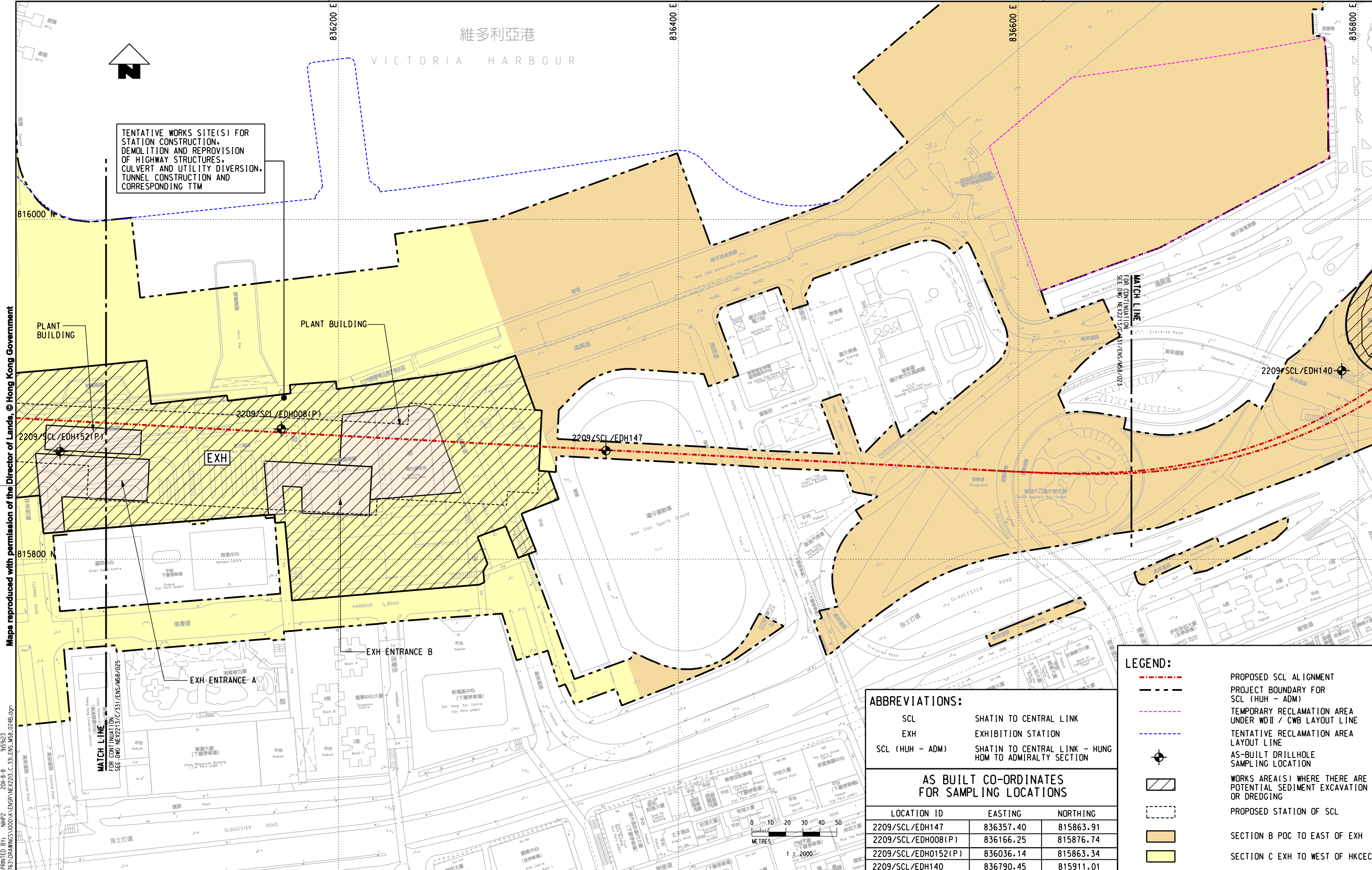
TITLE

NEX/2213
EIA STUDY FOR SCL (HUH - ADM)
AS-BUILT SEDIMENT SAMPLING LOCATIONS
SHEET 5 OF 8

SCALE 1 : 2000 (A3)

FIGURE NO. NEX2213/C/331/ENS/M58/023

REV. B



TENTATIVE WORKS SITE(S) FOR STATION CONSTRUCTION, DEMOLITION AND REPROVISION OF HIGHWAY STRUCTURES, CULVERT AND UTILITY DIVERSION, TUNNEL CONSTRUCTION AND CORRESPONDING TM

Maps reproduced with permission of the Director of Lands, © Hong Kong Government

PLOT DRY: R:\us\set\mtr\p\p\DRIVER\WINDOWS\3 COL\016.dgn
 MODEL NAME: NEX2213_C_331_ENS_M58_024B.dgn
 FILE NAME: ME:\PROJECTS\6005076\DRAWINGS\000\A\ENR\NEX2213_C_331_ENS_M58_024B.dgn

ABBREVIATIONS:

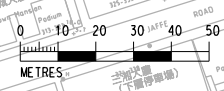
| | |
|-----------------|--|
| SCL | SHATIN TO CENTRAL LINK |
| EXH | EXHIBITION STATION |
| SCL (HUH - ADM) | SHATIN TO CENTRAL LINK - HUNG HOM TO ADMIRALTY SECTION |

AS BUILT CO-ORDINATES FOR SAMPLING LOCATIONS

| LOCATION ID | EASTING | NORTHING |
|---------------------|-----------|-----------|
| 2209/SCL/EDH147 | 836357.40 | 815863.91 |
| 2209/SCL/EDH008(P) | 836166.25 | 815876.74 |
| 2209/SCL/EDH0152(P) | 836036.14 | 815863.34 |
| 2209/SCL/EDH140 | 836790.45 | 815911.01 |

LEGEND:

| | |
|--|---|
| | PROPOSED SCL ALIGNMENT |
| | PROJECT BOUNDARY FOR SCL (HUH - ADM) |
| | TEMPORARY RECLAMATION AREA UNDER WDII / CWB LAYOUT LINE |
| | TENTATIVE RECLAMATION AREA LAYOUT LINE |
| | AS-BUILT DRILLHOLE SAMPLING LOCATION |
| | WORKS AREA(S) WHERE THERE ARE POTENTIAL SEDIMENT EXCAVATION OR DREDGING |
| | PROPOSED STATION OF SCL |
| | SECTION B POC TO EAST OF EXH |
| | SECTION C EXH TO WEST OF HKCEC |



| REV | DESCRIPTION | BY | DATE | APPROVED | REV | DESCRIPTION | BY | DATE | APPROVED |
|-----|-------------|----|------|----------|-----|-------------|----|------|----------|
| | | | | | | | | | |

| | |
|----------|-----------|
| DRAWN | GXH |
| DESIGNED | -- |
| CHECKED | LCR |
| APPROVED | -- |
| DATE | 02/AUG/11 |

MTR

SHATIN TO CENTRAL LINK

AECOM

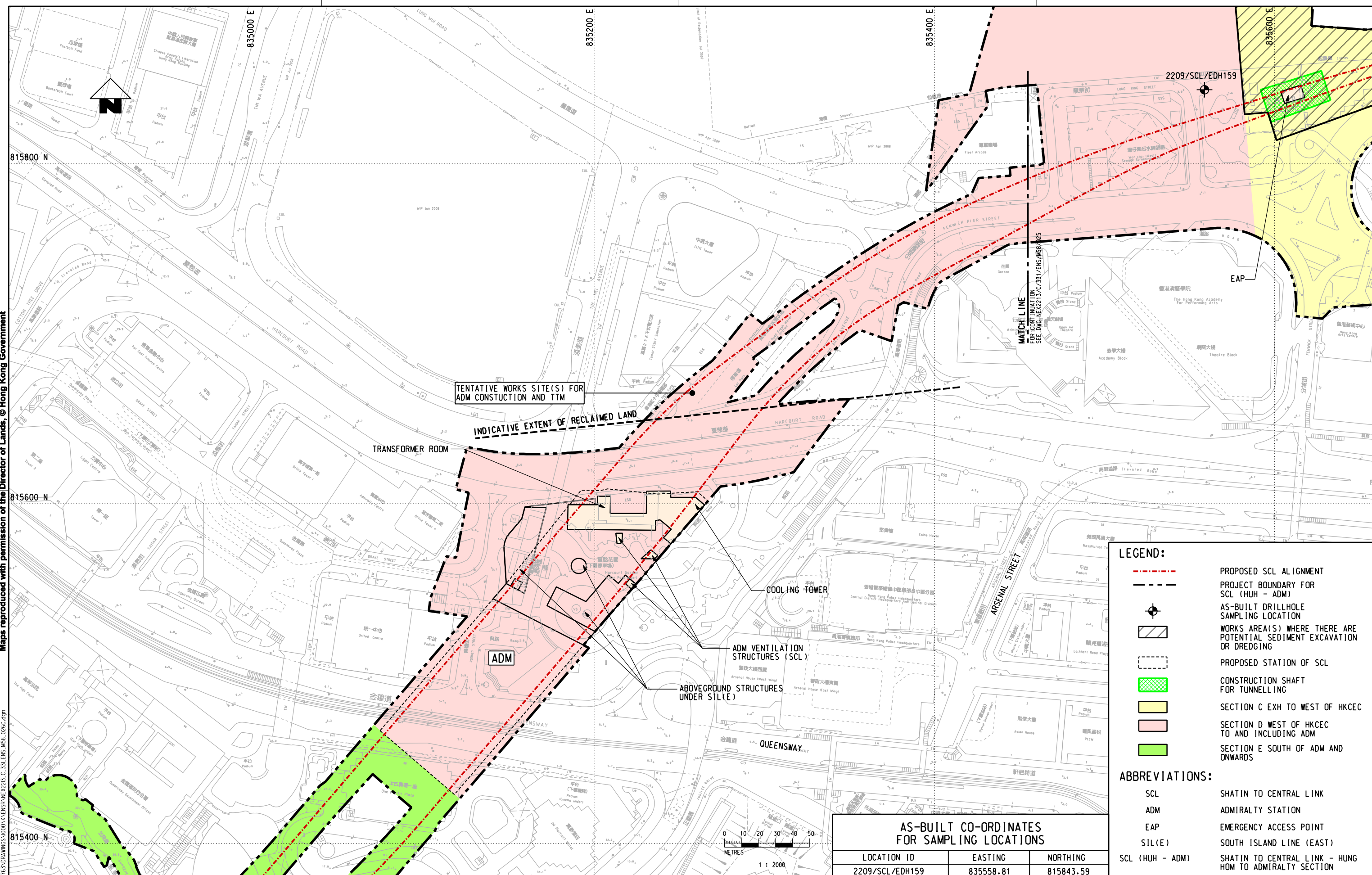
ORIGINATOR

CADD REF. NEX2213_C_331_ENS_M58_024B.dgn

| | | | |
|-------------------------------|--|--------------------------------------|--|
| TITLE | | NEX/2213 | |
| EIA STUDY FOR SCL (HUH - ADM) | | AS-BUILT SEDIMENT SAMPLING LOCATIONS | |
| SHEET 6 OF 8 | | SCALE 1 : 2000 (A3) | |
| FIGURE NO. | | NEX2213/C/331/ENS/M58/024 | |
| REV. | | B | |

Maps reproduced with permission of the Director of Lands, © Hong Kong Government

Plot: D:\Projects\NEX\PROJECTS\NEX2213\C_331_ENS_M58_026C.dgn
 Model Name: NEX2213_C_331_ENS_M58_026C.dgn
 Date: 08/11/2011 14:00:00
 Author: GKH



LEGEND:

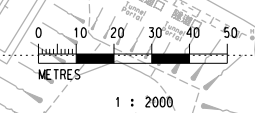
- PROPOSED SCL ALIGNMENT
- PROJECT BOUNDARY FOR SCL (HUH - ADM)
- AS-BUILT DRILLHOLE SAMPLING LOCATION
- WORKS AREA(S) WHERE THERE ARE POTENTIAL SEDIMENT EXCAVATION OR DREDGING
- PROPOSED STATION OF SCL
- CONSTRUCTION SHAFT FOR TUNNELLING
- SECTION C EXH TO WEST OF HKCEC
- SECTION D WEST OF HKCEC TO AND INCLUDING ADM
- SECTION E SOUTH OF ADM AND ONWARDS

ABBREVIATIONS:

- SCL SHATIN TO CENTRAL LINK
- ADM ADMIRALTY STATION
- EAP EMERGENCY ACCESS POINT
- SIL(E) SOUTH ISLAND LINE (EAST)
- SCL (HUH - ADM) SHATIN TO CENTRAL LINK - HUNG HOM TO ADMIRALTY SECTION

AS-BUILT CO-ORDINATES FOR SAMPLING LOCATIONS

| LOCATION ID | EASTING | NORTHING |
|-----------------|-----------|-----------|
| 2209/SCL/EDH159 | 835558.81 | 815843.59 |



| REV | DESCRIPTION | BY | DATE | APPROVED | REV | DESCRIPTION | BY | DATE | APPROVED |
|-----|-------------|----|------|----------|-----|-------------|----|------|----------|
| | | | | | | | | | |

| | |
|----------|-------------|
| DRAWN | GXH |
| DESIGNED | --- |
| CHECKED | LCR |
| APPROVED | --- |
| DATE | 08/NOV/2011 |

MTR

SHATIN TO CENTRAL LINK

AECOM

ORIGINATOR

CADD REF. NEX2213_C_331_ENS_M58_026C.dgn

TITLE

NEX/2213
EIA STUDY FOR SCL (HUH - ADM)
AS-BUILT SEDIMENT SAMPLING LOCATIONS
SHEET 8 OF 8

SCALE 1 : 2000 (A3)

FIGURE NO. NEX2213/C/331/ENS/M58/026

REV. C