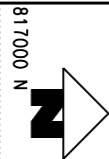


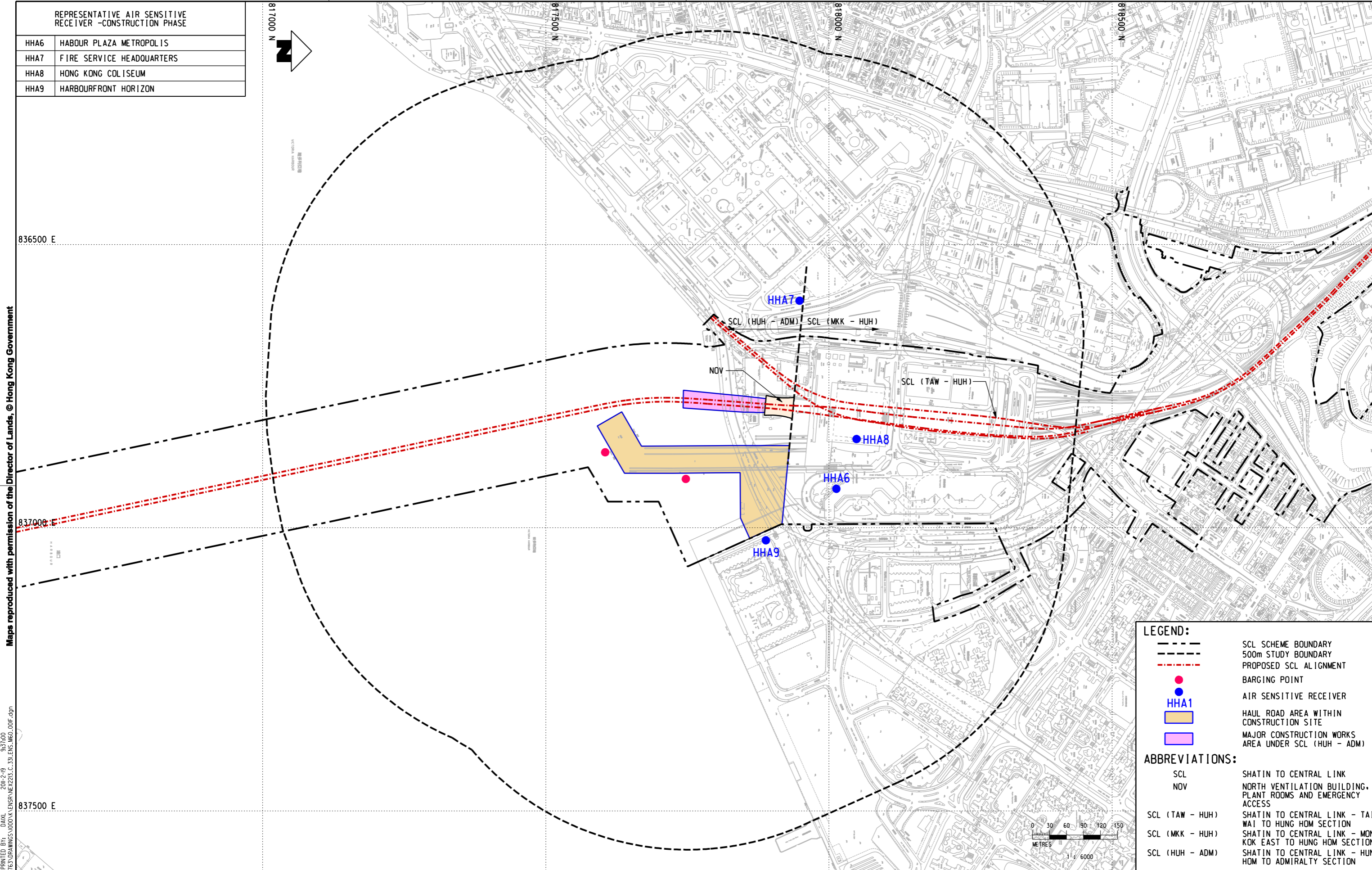
REPRESENTATIVE AIR SENSITIVE RECEIVER -CONSTRUCTION PHASE

HHA6	HABOUR PLAZA METROPOLIS
HHA7	FIRE SERVICE HEADQUARTERS
HHA8	HONG KONG COLISEUM
HHA9	HARBOURFRONT HORIZON



Maps reproduced with permission of the Director of Lands, © Hong Kong Government

PLOT DRW: R:\us\mshet\NTR\PI\DRIVER\WINDOWS\3 COL\016.dgn 0:37:00
 MODELNAME: M60016.dwg
 FILENAME: M60016.dwg
 PRINTED BY: DANA
 DATE: 2011-12-19
 M60016.dwg

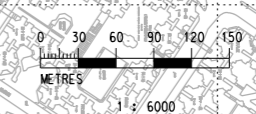


LEGEND:

- SCL SCHEME BOUNDARY
- 500m STUDY BOUNDARY
- PROPOSED SCL ALIGNMENT
- BARGING POINT
- AIR SENSITIVE RECEIVER
- HAUL ROAD AREA WITHIN CONSTRUCTION SITE
- MAJOR CONSTRUCTION WORKS AREA UNDER SCL (HUH - ADM)

ABBREVIATIONS:

- SCL SHATIN TO CENTRAL LINK
- NOV NORTH VENTILATION BUILDING, PLANT ROOMS AND EMERGENCY ACCESS
- SCL (TAW - HUH) SHATIN TO CENTRAL LINK - TAI WAI TO HUNG HOM SECTION
- SCL (MKK - HUH) SHATIN TO CENTRAL LINK - MONG KOK EAST TO HUNG HOM SECTION
- SCL (HUH - ADM) SHATIN TO CENTRAL LINK - HUNG HOM TO ADMIRALTY SECTION



				DRAWN DXL		SHATIN TO CENTRAL LINK 	TITLE NEX/2213 EIA STUDY FOR SCL (HUH - ADM) LOCATION OF AIR SENSITIVE RECEIVERS		
				DESIGNED ---			ORIGINATOR AECOM	SCALE 1 : 6000 (A3)	
				CHECKED ---				FIGURE NO. NEX2213/C/331/ENS/M60/001	
				APPROVED ---				REV. F	
				DATE 26/NOV/2010	CADD REF. NEX2213_C_331_ENS_M60_001F.dgn				
				DO NOT SCALE DRAWINGS. ALL DIMENSIONS SHALL BE VERIFIED ON SITE. (C) MTR CORPORATION LIMITED 2008 COPYRIGHT IN RESPECT OF THIS DRAWING / DOCUMENT IS OWNED BY THE MTR CORPORATION LIMITED OF HONG KONG. NO REPRODUCTION OF THE DRAWING / DOCUMENT OR ANY PART BY WHATEVER MEANS IS PERMITTED WITHOUT THE PRIOR WRITTEN CONSENT OF THE MTR CORPORATION LIMITED.					
REV	DESCRIPTION	BY	DATE	APPROVED	REV	DESCRIPTION	BY	DATE	APPROVED

Maps reproduced with permission of the Director of Lands, © Hong Kong Government

REPRESENTATIVE AIR SENSITIVE RECEIVER - CONSTRUCTION PHASE

CHA1	WORLD TRADE CENTRE
CHA2	SINO PLAZA
EXA1	CAUSEWAY CENTRE BLOCK A
EXA2	GREAT EAGLE CENTRE
EXA3	RENAISSANCE HARBOUR VIEW HOTEL
EXA4	PEDESTRIAN PLAZA
EXA5	EXISTING HARBOUR ROAD SPORTS CENTRE AND WAN CHAI SWIMMING POOL
EXA6	WAN CHAI SPORTS GROUND
EXA7	NEW HARBOUR ROAD SPORTS CENTRE AND WAN CHAI SWIMMING POOL

817000 N



836000 E

835000 E

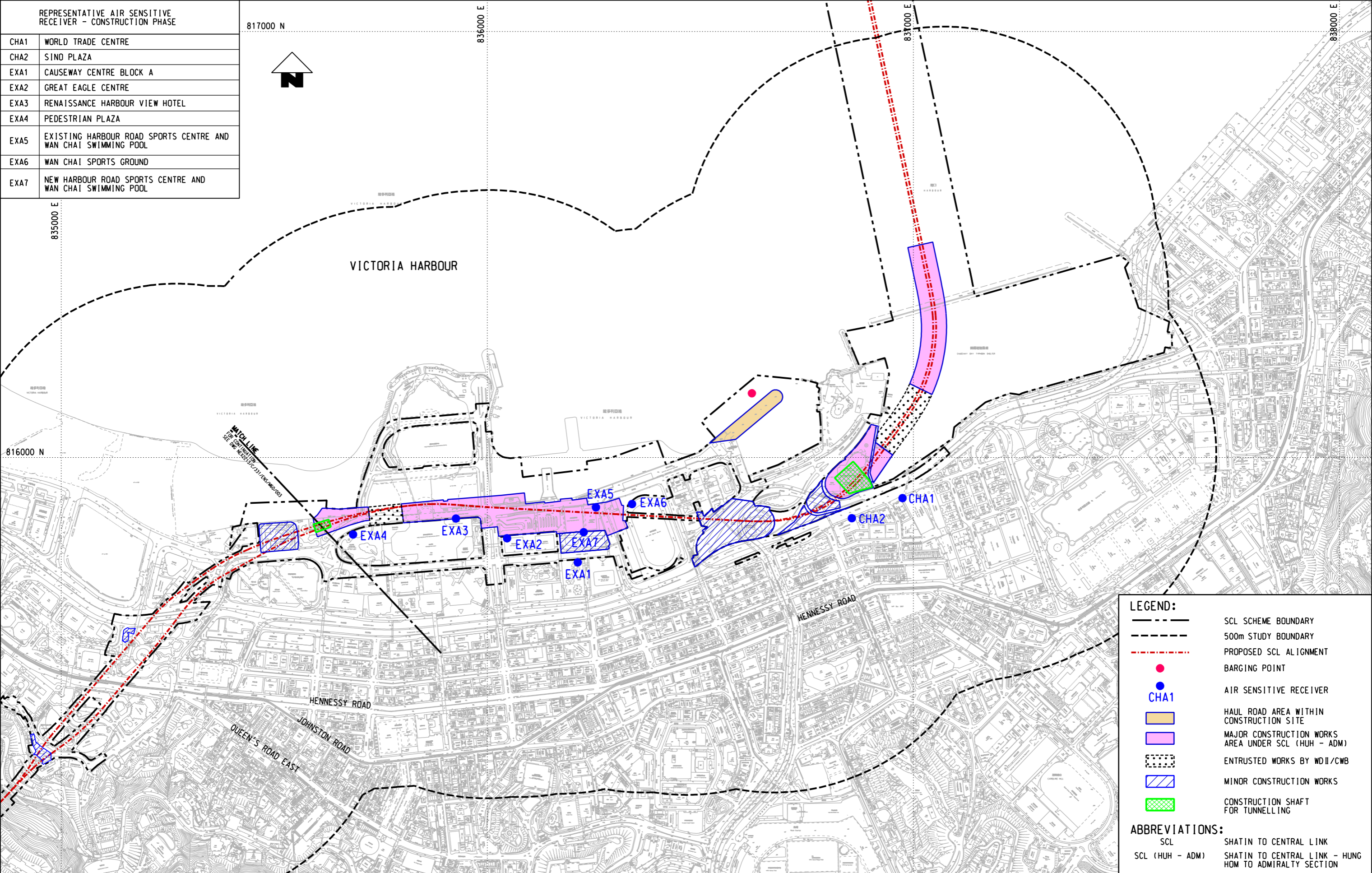
VICTORIA HARBOUR

816000 N

MICH LINE
CONSTRUCTION SITE
SEE DR NEX2213/C/331/ENS/M60/002

831000 E

838000 E



LEGEND:

- SCL SCHEME BOUNDARY
- 500m STUDY BOUNDARY
- PROPOSED SCL ALIGNMENT
- BARGING POINT
- AIR SENSITIVE RECEIVER
- CHA1
- HAUL ROAD AREA WITHIN CONSTRUCTION SITE
- MAJOR CONSTRUCTION WORKS AREA UNDER SCL (HUH - ADM)
- ENTRUSTED WORKS BY WDII/CWB
- MINOR CONSTRUCTION WORKS
- CONSTRUCTION SHAFT FOR TUNNELLING

ABBREVIATIONS:

- SCL SHATIN TO CENTRAL LINK
- SCL (HUH - ADM) SHATIN TO CENTRAL LINK - HUNG HOM TO ADMIRALTY STATION

PLOT DIR: F:\usr\mshet\mtr\p\p\DRIVER\WINDOWS\33 COL\016_r.dwg
 MODEL NAME: SHATIN TO CENTRAL LINK
 FILE NAME: M60/002.dgn

REV	DESCRIPTION	BY	DATE	APPROVED	REV	DESCRIPTION	BY	DATE	APPROVED

DRAWN	DXL
DESIGNED	---
CHECKED	---
APPROVED	---
DATE	26/NOV/2010

MTR

SHATIN TO CENTRAL LINK

AECOM

ORIGINATOR

CADD REF. NEX2213_C_331_ENS_M60_002G.dgn

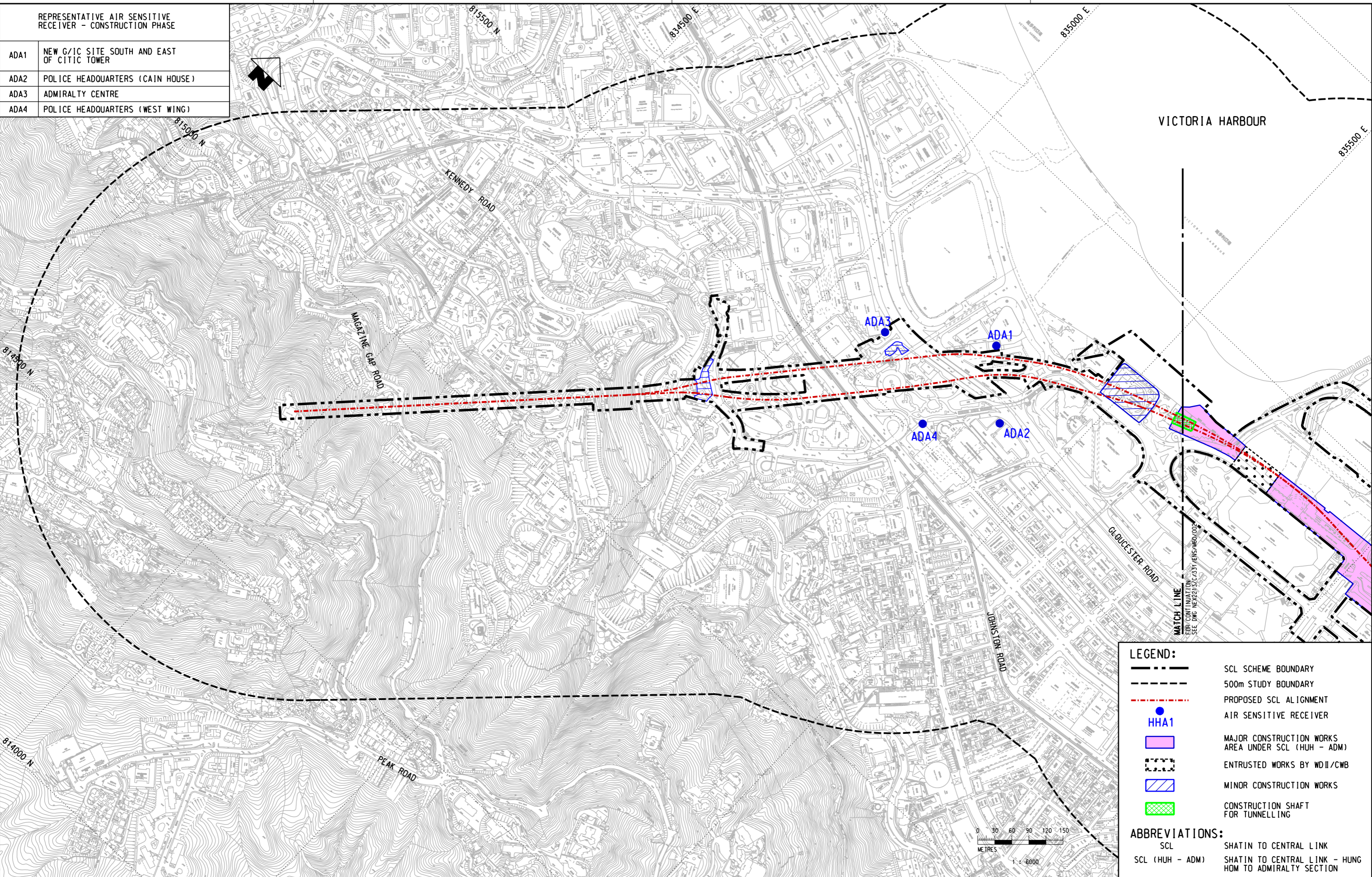
TITLE	NEX/2213 EIA STUDY FOR SCL (HUH - ADM) LOCATION OF AIR SENSITIVE RECEIVERS		
SCALE	1 : 8000 (A3)	FIGURE NO.	NEX2213/C/331/ENS/M60/002
REV.	G		

REPRESENTATIVE AIR SENSITIVE RECEIVER - CONSTRUCTION PHASE

ADA1	NEW G/IC SITE SOUTH AND EAST OF CITIC TOWER
ADA2	POLICE HEADQUARTERS (CAIN HOUSE)
ADA3	ADMIRALTY CENTRE
ADA4	POLICE HEADQUARTERS (WEST WING)

Maps reproduced with permission of the Director of Lands, © Hong Kong Government

PLOT DIR: F:\usr\msh\mtr\p\drawing\windows\13\00_016_r.dgn
 MODEL NAME: NEX2213_C_331_ENS_M60_003H.dgn
 FILE NAME: NEX2213_C_331_ENS_M60_003H.dgn

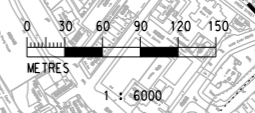


LEGEND:

- SCL SCHEME BOUNDARY
- 500m STUDY BOUNDARY
- PROPOSED SCL ALIGNMENT
- AIR SENSITIVE RECEIVER
- MAJOR CONSTRUCTION WORKS AREA UNDER SCL (HUH - ADM)
- ENTRUSTED WORKS BY WDII/CWB
- MINOR CONSTRUCTION WORKS
- CONSTRUCTION SHAFT FOR TUNNELLING

ABBREVIATIONS:

- SCL SHATIN TO CENTRAL LINK
- SCL (HUH - ADM) SHATIN TO CENTRAL LINK - HUNG HOM TO ADMIRALTY SECTION



REV	DESCRIPTION	BY	DATE	APPROVED	REV	DESCRIPTION	BY	DATE	APPROVED

DRAWN	DXL
DESIGNED	---
CHECKED	---
APPROVED	---
DATE	07/SEP/2011

MTR

SHATIN TO CENTRAL LINK

AECOM

ORIGINATOR

CADD REF. NEX2213_C_331_ENS_M60_003H.dgn

TITLE	NEX/2213 EIA STUDY FOR SCL (HUH - ADM) LOCATIONS OF AIR SENSITIVE RECEIVERS		
SCALE	1 : 6000 (A3)	FIGURE NO.	NEX2213/C/331/ENS/M60/003
REV.	H		