

Maps reproduced with permission of the Director of Lands, © Hong Kong Government

PLOT DIR: F:\us\mset\mtr\p\otriever\windows\3\00\016_r.dwt
 MODEL NAME: M60_015.dgn
 FILE NAME: M60_015.dgn

LEGEND:

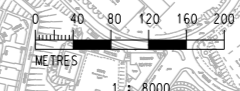
- SCL SCHEME BOUNDARY
- · - 500m STUDY BOUNDARY
- CHA1 AIR SENSITIVE RECEIVER WITH SENSITIVE USE AT THIS LEVEL
- CHA1 AIR SENSITIVE RECEIVER WITHOUT SENSITIVE USE AT THIS LEVEL

ABBREVIATIONS:

- SCL (HUH - ADM) SHATIN TO CENTRAL LINK - HUNG HOM TO ADMIRALTY SECTION

REMARK:

- THE HOURLY AVERAGE TSP EIAO-TM CRITERION IS 500 µg/m³.



REV	DESCRIPTION	BY	DATE	APPROVED	REV	DESCRIPTION	BY	DATE	APPROVED

DRAWN	DXL
DESIGNED	---
CHECKED	---
APPROVED	---
DATE	03/AUG/2011

MTR

SHATIN TO CENTRAL LINK

AECOM

CADD REF. NEX2213_C_331_ENS_M60_015E.dgn

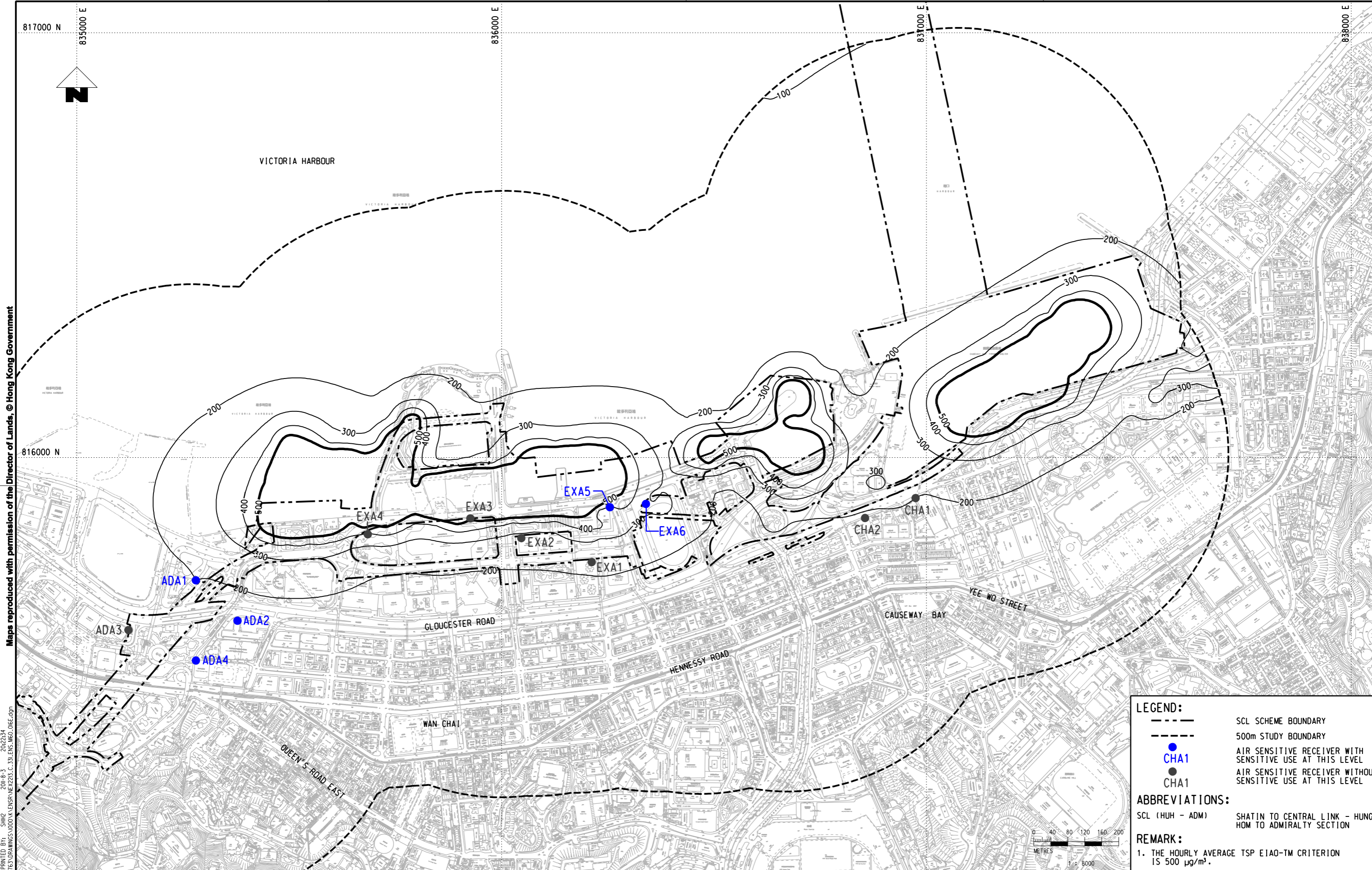
TITLE

NEX/2213
EIA STUDY FOR SCL (HUH - ADM)
TIER 2 CONTOURS OF MITIGATED CUMULATIVE MAXIMUM 1-HOUR TSP CONCENTRATION IN µg/m³ AT 1.5m ABOVE GROUND LEVEL (HONG KONG SIDE) (SCENARIO 1)

SCALE 1 : 8000 (A3)

FIGURE NO. NEX2213/C/331/ENS/M60/015

REV. E



Maps reproduced with permission of the Director of Lands, © Hong Kong Government

PLOT DIR: F:\usr\mstr\mstr\p\drawing\windows\33\00\016\dgn
 MODELNAME: M60016.dgn
 FILENAME: M60016.dgn
 DATE: 2011-08-03
 TIME: 20:22:34
 USER: SHIRLEY

LEGEND:

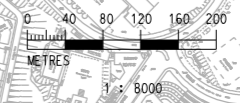
- SCL SCHEME BOUNDARY
- 500m STUDY BOUNDARY
- CHA1 AIR SENSITIVE RECEIVER WITH SENSITIVE USE AT THIS LEVEL
- CHA1 AIR SENSITIVE RECEIVER WITHOUT SENSITIVE USE AT THIS LEVEL

ABBREVIATIONS:

SCL (HUH - ADM) SHATIN TO CENTRAL LINK - HUNG HOM TO ADMIRALTY SECTION

REMARK:

1. THE HOURLY AVERAGE TSP EIAO-TM CRITERION IS 500 µg/m³.



REV	DESCRIPTION	BY	DATE	APPROVED	REV	DESCRIPTION	BY	DATE	APPROVED

DRAWN	DXL
DESIGNED	---
CHECKED	---
APPROVED	---
DATE	03/AUG/2011

SHATIN TO CENTRAL LINK

AECOM

ORIGINATOR

DO NOT SCALE DRAWINGS. ALL DIMENSIONS SHALL BE VERIFIED ON SITE.
 (C) MTR CORPORATION LIMITED 2008 COPYRIGHT IN RESPECT OF THIS DRAWING / DOCUMENT IS OWNED BY THE MTR CORPORATION LIMITED OF HONG KONG. NO REPRODUCTION OF THE DRAWING / DOCUMENT OR ANY PART BY WHATEVER MEANS IS PERMITTED WITHOUT THE PRIOR WRITTEN CONSENT OF THE MTR CORPORATION LIMITED.

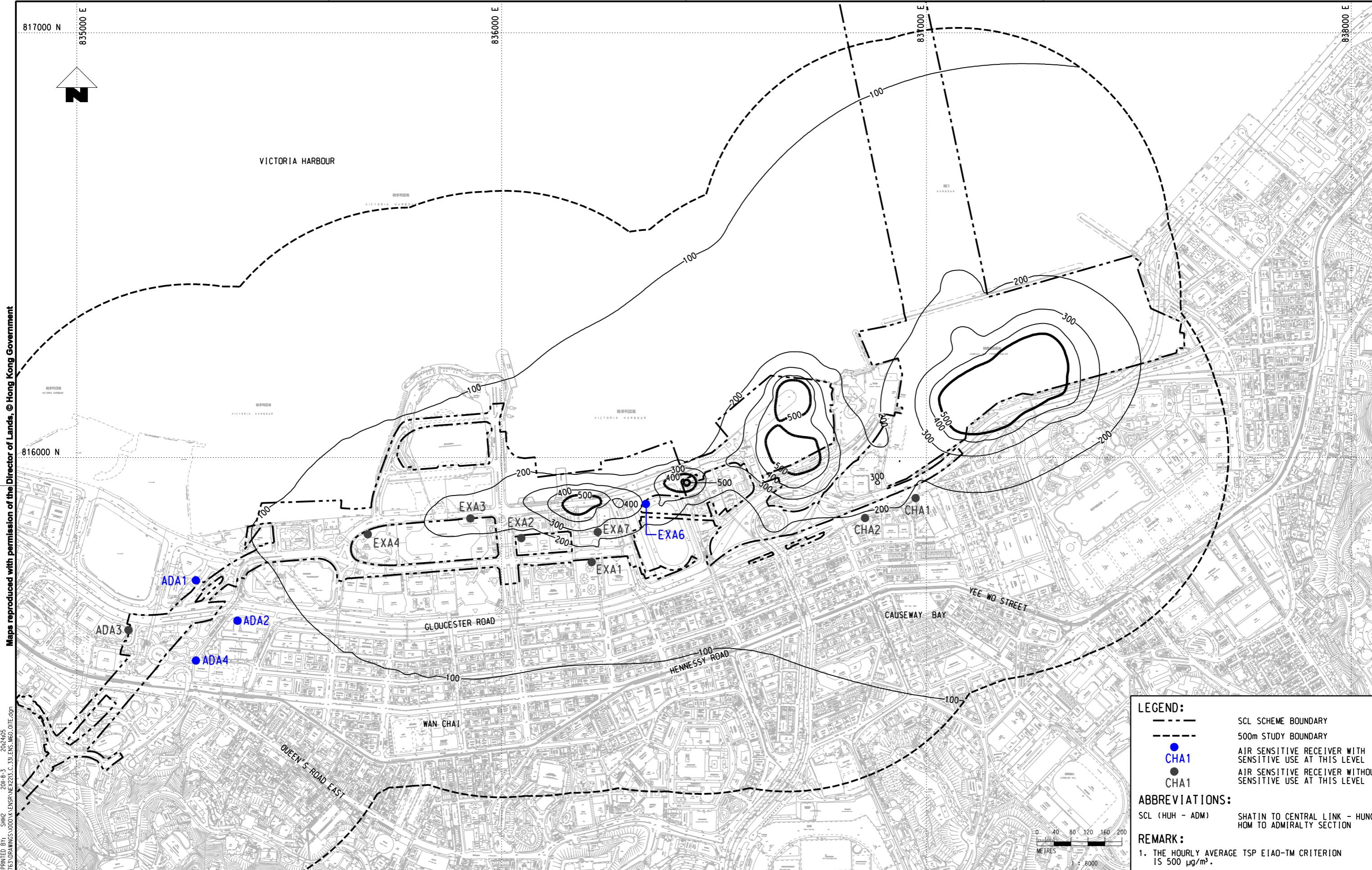
CADD REF. NEX2213_C_331_ENS_M60_016.dgn

TITLE NEX/2213

EIA STUDY FOR SCL (HUH - ADM)

TIER 2 CONTOURS OF MITIGATED CUMULATIVE MAXIMUM 1-HOUR TSP CONCENTRATION IN µg/m³ AT 1.5m ABOVE GROUND LEVEL (HONG KONG SIDE) (SCENARIO 2)

SCALE 1 : 8000 (A3) FIGURE NO. NEX2213/C/331/ENS/M60/016 REV. E



Maps reproduced with permission of the Director of Lands, © Hong Kong Government

PLOT DRY: F:\us\mset\mtr\p\otdriven\windows\3\00\016\dgn
 MODEL NAME: M60_017E.dgn
 FILE NAME: M60_017E.dgn

LEGEND:

- SCL SCHEME BOUNDARY
- - - 500m STUDY BOUNDARY
- CHA1 AIR SENSITIVE RECEIVER WITH SENSITIVE USE AT THIS LEVEL
- CHA1 AIR SENSITIVE RECEIVER WITHOUT SENSITIVE USE AT THIS LEVEL

ABBREVIATIONS:

SCL (HUH - ADM) SHATIN TO CENTRAL LINK - HUNG HOM TO ADMIRALTY SECTION

REMARK:

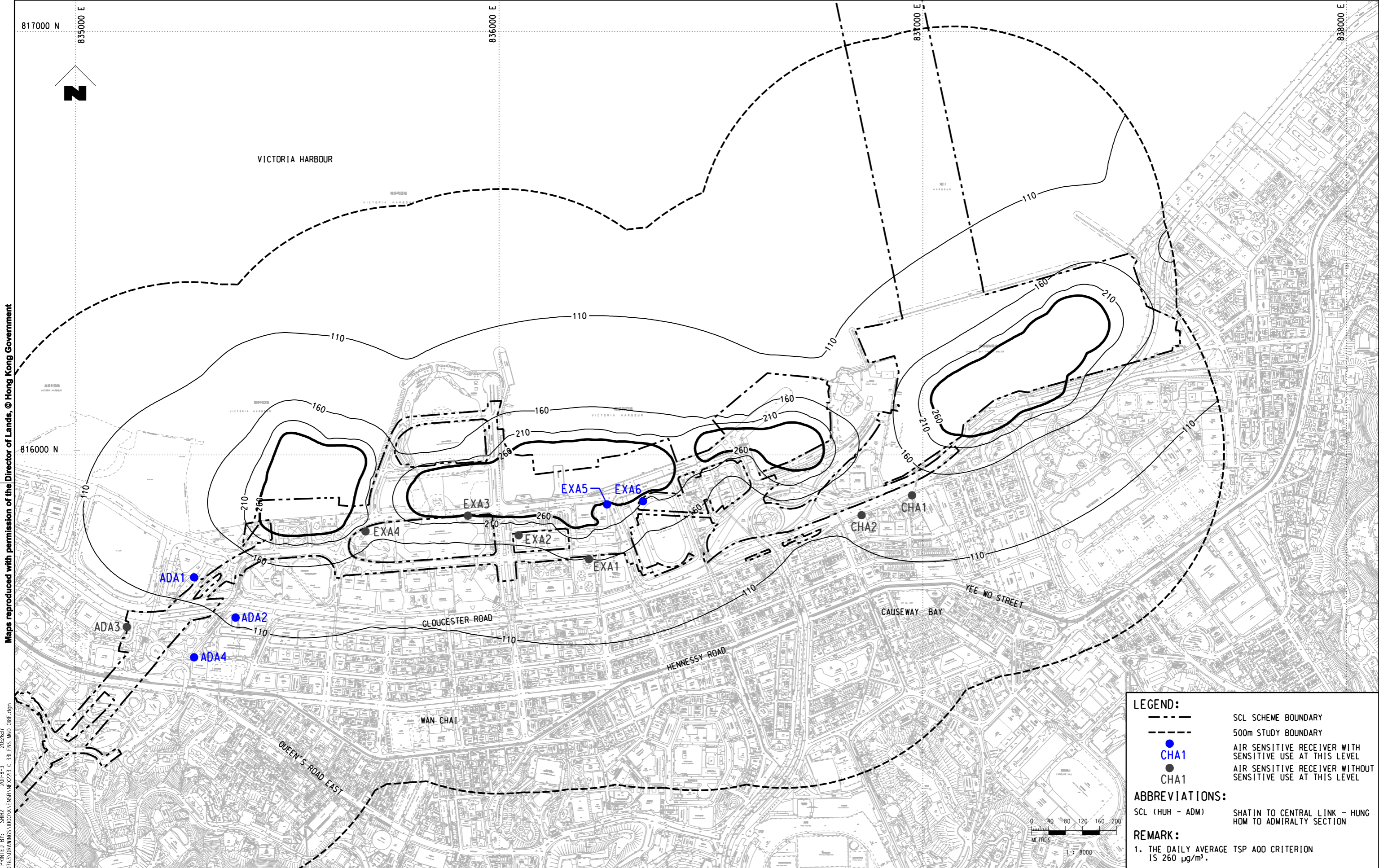
1. THE HOURLY AVERAGE TSP EIAO-TM CRITERION IS 500 µg/m³.



REV	DESCRIPTION	BY	DATE	APPROVED	REV	DESCRIPTION	BY	DATE	APPROVED

DRAWN	DXL		SHATIN TO CENTRAL LINK
DESIGNED	---		
CHECKED	---		
APPROVED	---		
DATE	03/AUG/2011	ORIGINATOR	
<small>DO NOT SCALE DRAWINGS. ALL DIMENSIONS SHALL BE VERIFIED ON SITE. © MTR CORPORATION LIMITED 2008 COPYRIGHT IN RESPECT OF THIS DRAWING / DOCUMENT IS OWNED BY THE MTR CORPORATION LIMITED OF HONG KONG. NO REPRODUCTION OF THE DRAWING / DOCUMENT OR ANY PART BY WHATEVER MEANS IS PERMITTED WITHOUT THE PRIOR WRITTEN CONSENT OF THE MTR CORPORATION LIMITED.</small>		CADD REF.	NEX2213_C_331_ENS_M60_017E.dgn

TITLE	NEX/2213 EIA STUDY FOR SCL (HUH - ADM) TIER 2 CONTOURS OF MITIGATED CUMULATIVE MAXIMUM 1-HOUR TSP CONCENTRATION IN µg/m³ AT 1.5m ABOVE GROUND LEVEL (HONG KONG SIDE) (SCENARIO 3)		
SCALE	1 : 8000 (A3)	FIGURE NO.	NEX2213/C/331/ENS/M60/017
REV.	E		



Maps reproduced with permission of the Director of Lands, © Hong Kong Government

LEGEND:

- SCL SCHEME BOUNDARY
- ... 500m STUDY BOUNDARY
- CHA1 AIR SENSITIVE RECEIVER WITH SENSITIVE USE AT THIS LEVEL
- CHA1 AIR SENSITIVE RECEIVER WITHOUT SENSITIVE USE AT THIS LEVEL

ABBREVIATIONS:

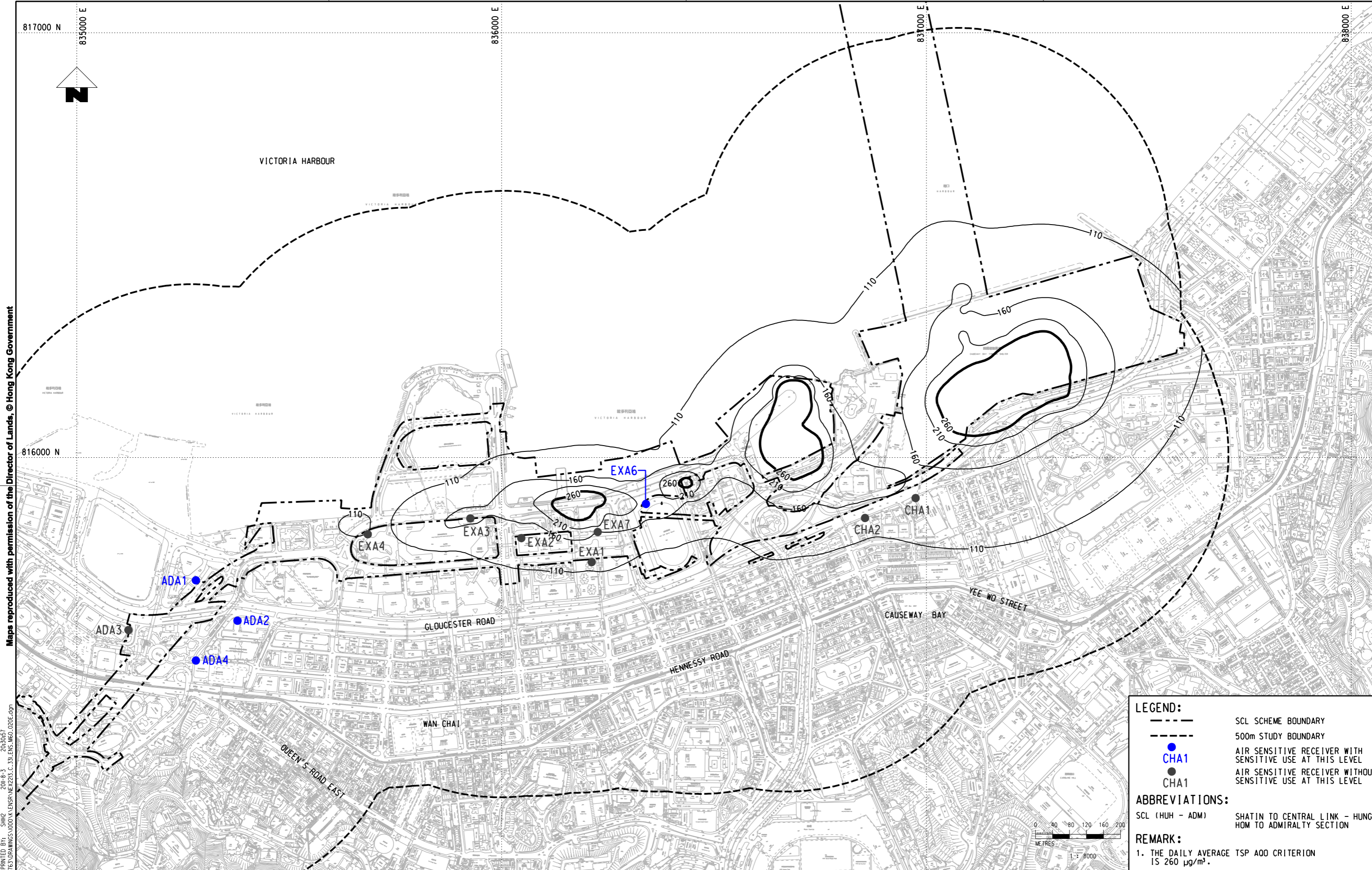
SCL (HUH - ADM) SHATIN TO CENTRAL LINK - HUNG HOM TO ADMIRALTY SECTION

REMARK:

1. THE DAILY AVERAGE TSP AOD CRITERION IS 260 µg/m³.

PLOT DIR: F:\usr\mtr\p1\DRIVER\WINDOWS\3 COLOUR.dwg
 MODELNAME: C:\Users\shirley\Documents\SHIRLEY\PROJECTS\NEX2213\C31.ENS.M60.018E.dgn
 FILENAME:

<table border="1"> <tr><td>REV</td><td>DESCRIPTION</td><td>BY</td><td>DATE</td><td>APPROVED</td></tr> <tr><td> </td><td> </td><td> </td><td> </td><td> </td></tr> </table>				REV	DESCRIPTION	BY	DATE	APPROVED						<table border="1"> <tr><td> </td><td> </td><td> </td><td> </td><td> </td></tr> <tr><td> </td><td> </td><td> </td><td> </td><td> </td></tr> </table>														<table border="1"> <tr><td>DRAWN</td><td>DXL</td></tr> <tr><td>DESIGNED</td><td>---</td></tr> <tr><td>CHECKED</td><td>---</td></tr> <tr><td>APPROVED</td><td>---</td></tr> <tr><td>DATE</td><td>03/AUG/2011</td></tr> </table>		DRAWN	DXL	DESIGNED	---	CHECKED	---	APPROVED	---	DATE	03/AUG/2011	<p>SHATIN TO CENTRAL LINK</p>		<p>TITLE</p> <p>NEX/2213 EIA STUDY FOR SCL (HUH - ADM) TIER 2 CONTOURS OF MITIGATED CUMULATIVE MAXIMUM 24-HOUR TSP CONCENTRATION IN µg/m³ AT 1.5m ABOVE GROUND LEVEL (HONG KONG SIDE) (SCENARIO 1)</p>	
REV	DESCRIPTION	BY	DATE	APPROVED																																							
DRAWN	DXL																																										
DESIGNED	---																																										
CHECKED	---																																										
APPROVED	---																																										
DATE	03/AUG/2011																																										
<table border="1"> <tr><td>DO NOT SCALE DRAWINGS. ALL DIMENSIONS SHALL BE</td></tr> <tr><td>VERIFY ON SITE.</td></tr> <tr><td>© MTR CORPORATION LIMITED 2008 COPYRIGHT IN</td></tr> <tr><td>RESPECT OF THIS DRAWING / DOCUMENT IS OWNED BY THE</td></tr> <tr><td>MTR CORPORATION LIMITED OF HONG KONG. NO</td></tr> <tr><td>REPRODUCTION OF THE DRAWING / DOCUMENT OR ANY PART</td></tr> <tr><td>BY WHATEVER MEANS IS PERMITTED WITHOUT THE PRIOR</td></tr> <tr><td>WRITTEN CONSENT OF THE MTR CORPORATION LIMITED.</td></tr> </table>						DO NOT SCALE DRAWINGS. ALL DIMENSIONS SHALL BE	VERIFY ON SITE.	© MTR CORPORATION LIMITED 2008 COPYRIGHT IN	RESPECT OF THIS DRAWING / DOCUMENT IS OWNED BY THE	MTR CORPORATION LIMITED OF HONG KONG. NO	REPRODUCTION OF THE DRAWING / DOCUMENT OR ANY PART	BY WHATEVER MEANS IS PERMITTED WITHOUT THE PRIOR	WRITTEN CONSENT OF THE MTR CORPORATION LIMITED.	<p>ORIGINATOR</p> <p>AECOM</p>		<p>SCALE</p> <p>1 : 8000 (A3)</p>		<p>FIGURE NO.</p> <p>NEX2213/C/331/ENS/M60/018</p>		<p>REV.</p> <p>E</p>																							
DO NOT SCALE DRAWINGS. ALL DIMENSIONS SHALL BE																																											
VERIFY ON SITE.																																											
© MTR CORPORATION LIMITED 2008 COPYRIGHT IN																																											
RESPECT OF THIS DRAWING / DOCUMENT IS OWNED BY THE																																											
MTR CORPORATION LIMITED OF HONG KONG. NO																																											
REPRODUCTION OF THE DRAWING / DOCUMENT OR ANY PART																																											
BY WHATEVER MEANS IS PERMITTED WITHOUT THE PRIOR																																											
WRITTEN CONSENT OF THE MTR CORPORATION LIMITED.																																											
<p>CADD REF. NEX2213_C_331_ENS_M60_018E.dgn</p>						<p>REMARK:</p> <p>1. THE DAILY AVERAGE TSP AOD CRITERION IS 260 µg/m³.</p>		<p>SCALE</p> <p>1 : 8000 (A3)</p>		<p>FIGURE NO.</p> <p>NEX2213/C/331/ENS/M60/018</p>		<p>REV.</p> <p>E</p>																															



Maps reproduced with permission of the Director of Lands, © Hong Kong Government

PLOT DIR: F:\us\mset\mtr\p\otriver\windows\3\00\016_r.dwg
 MODEL NAME: SHH\K\ENR\ENR\2213_C_331_ENR_M60_020E.dgn
 FILE NAME: M60\020E.dgn

LEGEND:

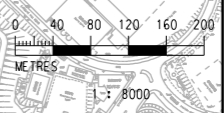
- SCL SCHEME BOUNDARY
- 500m STUDY BOUNDARY
- CHA1 AIR SENSITIVE RECEIVER WITH SENSITIVE USE AT THIS LEVEL
- CHA1 AIR SENSITIVE RECEIVER WITHOUT SENSITIVE USE AT THIS LEVEL

ABBREVIATIONS:

SCL (HUH - ADM) SHATIN TO CENTRAL LINK - HUNG HOM TO ADMIRALTY SECTION

REMARK:

1. THE DAILY AVERAGE TSP AOD CRITERION IS 260 $\mu\text{g}/\text{m}^3$.



REV	DESCRIPTION	BY	DATE	APPROVED	REV	DESCRIPTION	BY	DATE	APPROVED

DRAWN	DXL
DESIGNED	---
CHECKED	---
APPROVED	---
DATE	03/AUG/2011

MTR

SHATIN TO CENTRAL LINK

AECOM

CADD REF. NEX2213_C_331_ENR_M60_020E.dgn

TITLE

NEX/2213
 EIA STUDY FOR SCL (HUH - ADM)
 TIER 2 CONTOURS OF MITIGATED CUMULATIVE MAXIMUM 24-HOUR TSP
 CONCENTRATION IN $\mu\text{g}/\text{m}^3$ AT 1.5m ABOVE GROUND LEVEL
 (HONG KONG SIDE) (SCENARIO 3)

SCALE 1 : 8000 (A3) FIGURE NO. NEX2213/C/331/ENS/M60/020 REV. E