

Maps reproduced with permission of the Director of Lands, © Hong Kong Government

PLOT DRW: F:\usr\mset\mtr\p\drawing\windows\33\00\016\dgn
 MODEL NAME: NEX2213_C_331_ENS_M60_021F.dgn
 FILE NAME: NEX2213_C_331_ENS_M60_021F.dgn

LEGEND:

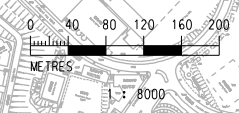
- SCL SCHEME BOUNDARY
- 500m STUDY BOUNDARY
- CHA1 AIR SENSITIVE RECEIVER WITH SENSITIVE USE AT THIS LEVEL
- CHA1 AIR SENSITIVE RECEIVER WITHOUT SENSITIVE USE AT THIS LEVEL

ABBREVIATIONS:

- SCL (HUH - ADM) SHATIN TO CENTRAL LINK - HUNG HOM TO ADMIRALTY SECTION

REMARK:

- THE ANNUAL AVERAGE TSP AOD CRITERION IS 80 $\mu\text{g}/\text{m}^3$.



REV	DESCRIPTION	BY	DATE	APPROVED	REV	DESCRIPTION	BY	DATE	APPROVED

DRAWN	DXL
DESIGNED	---
CHECKED	---
APPROVED	---
DATE	03/AUG/2011

DO NOT SCALE DRAWINGS. ALL DIMENSIONS SHALL BE VERIFIED ON SITE.
 (C) MTR CORPORATION LIMITED 2008 COPYRIGHT IN RESPECT OF THIS DRAWING / DOCUMENT IS OWNED BY THE MTR CORPORATION LIMITED OF HONG KONG. NO REPRODUCTION OF THE DRAWING / DOCUMENT OR ANY PART BY WHATEVER MEANS IS PERMITTED WITHOUT THE PRIOR WRITTEN CONSENT OF THE MTR CORPORATION LIMITED.

MTR

SHATIN TO CENTRAL LINK

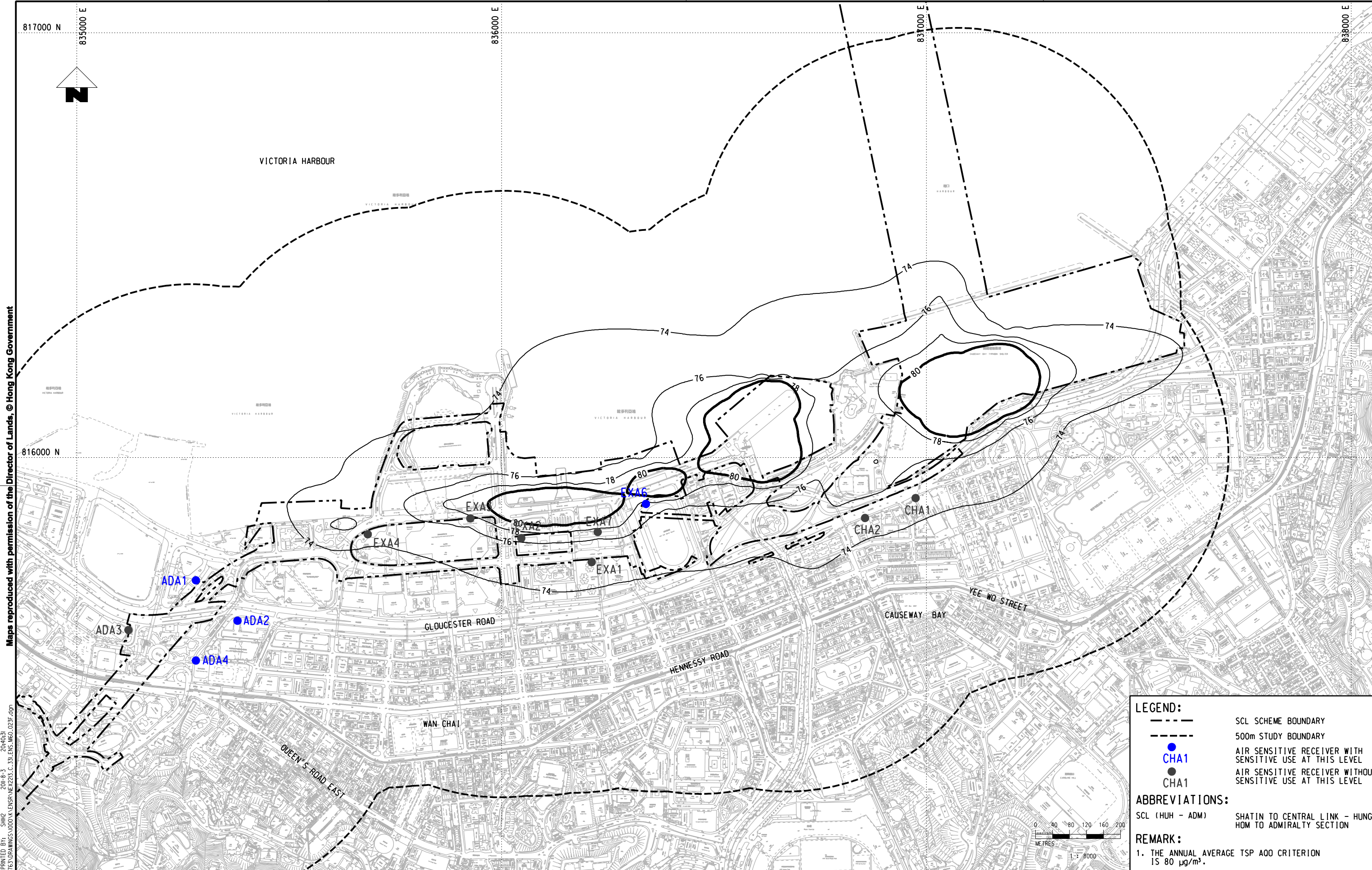
AECOM

CADD REF. NEX2213_C_331_ENS_M60_021F.dgn

TITLE

NEX/2213
EIA STUDY FOR SCL (HUH - ADM)
CONTOURS OF MITIGATED CUMULATIVE ANNUAL TSP
CONCENTRATION IN $\mu\text{g}/\text{m}^3$ AT 1.5m ABOVE GROUND LEVEL
(HONG KONG SIDE) (SCENARIO 1)

SCALE 1 : 8000 (A3) FIGURE NO. NEX2213/C/331/ENS/M60/021 REV. F



Maps reproduced with permission of the Director of Lands, © Hong Kong Government

PLOT DIR: F:\usr\mset\MTR\PI\DRIVER\WINDOWS\3 COLOUR.dwg
 MODEL NAME: SHATIN TO CENTRAL LINK - HUNG HOM TO ADMIRALTY SECTION
 FILE NAME: M60_023F.dgn

LEGEND:

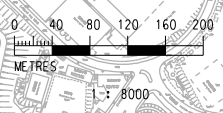
- SCL SCHEME BOUNDARY
- 500m STUDY BOUNDARY
- CHA1 AIR SENSITIVE RECEIVER WITH SENSITIVE USE AT THIS LEVEL
- CHA1 AIR SENSITIVE RECEIVER WITHOUT SENSITIVE USE AT THIS LEVEL

ABBREVIATIONS:

SCL (HUH - ADM) SHATIN TO CENTRAL LINK - HUNG HOM TO ADMIRALTY SECTION

REMARK:

1. THE ANNUAL AVERAGE TSP A00 CRITERION IS 80 $\mu\text{g}/\text{m}^3$.



REV	DESCRIPTION	BY	DATE	APPROVED	REV	DESCRIPTION	BY	DATE	APPROVED

DRAWN	DXL
DESIGNED	---
CHECKED	---
APPROVED	---
DATE	03/AUG/2011

MTR

SHATIN TO CENTRAL LINK

AECOM

CADD REF. NEX2213_C_331_ENS_M60_023F.dgn

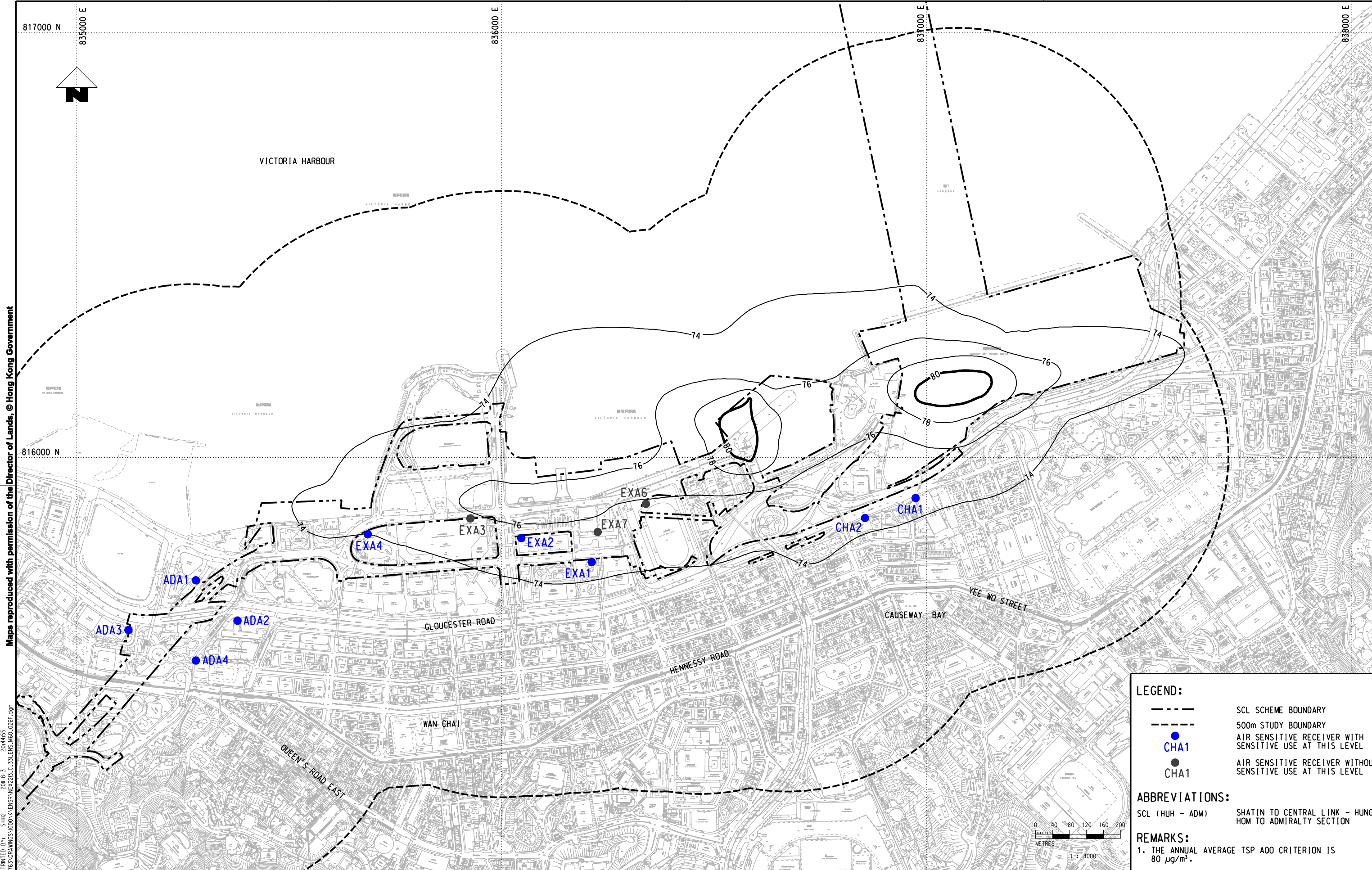
TITLE

NEX/2213
 EIA STUDY FOR SCL (HUH - ADM)
 CONTOURS OF MITIGATED CUMULATIVE ANNUAL TSP
 CONCENTRATION IN $\mu\text{g}/\text{m}^3$ AT 1.5m ABOVE GROUND LEVEL
 (HONG KONG SIDE) (SCENARIO 3)

SCALE
 1 : 8000 (A3)

FIGURE NO.
 NEX2213/C/331/ENS/M60/023

REV.
 F



Maps reproduced with permission of the Director of Lands, © Hong Kong Government

PLOT DRY: F:\usr\set\mtr\p\drawing\windows\33\00\016_r.dgn
 MODEL NAME: SHATIN TO CENTRAL LINK - HUNG HONG TO ADMIRALTY SECTION
 FILE NAME: M60_026.dgn

LEGEND:

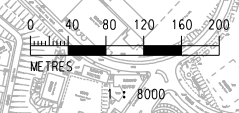
- SCL SCHEME BOUNDARY
- 500m STUDY BOUNDARY
- CHA1 AIR SENSITIVE RECEIVER WITH SENSITIVE USE AT THIS LEVEL
- CHA1 AIR SENSITIVE RECEIVER WITHOUT SENSITIVE USE AT THIS LEVEL

ABBREVIATIONS:

SCL (HUH - ADM) SHATIN TO CENTRAL LINK - HUNG HONG TO ADMIRALTY SECTION

REMARKS:

1. THE ANNUAL AVERAGE TSP ADD CRITERION IS 80 µg/m³.



REV	DESCRIPTION	BY	DATE	APPROVED	REV	DESCRIPTION	BY	DATE	APPROVED

DRAWN	DXL
DESIGNED	---
CHECKED	---
APPROVED	---
DATE	03/AUG/2011

MTR

SHATIN TO CENTRAL LINK

AECOM

CADD REF. NEX2213_C_331_ENS_M60_026.dgn

TITLE	NEX/2213 EIA STUDY FOR SCL (HUH - ADM) CONTOURS OF MITIGATED CUMULATIVE ANNUAL TSP CONCENTRATION IN µg/m ³ AT 5.0m ABOVE GROUND LEVEL (HONG KONG SIDE) (SCENARIO 3)		
SCALE	1 : 8000 (A3)	FIGURE NO.	NEX2213/C/331/ENS/M60/026
REV.	F		