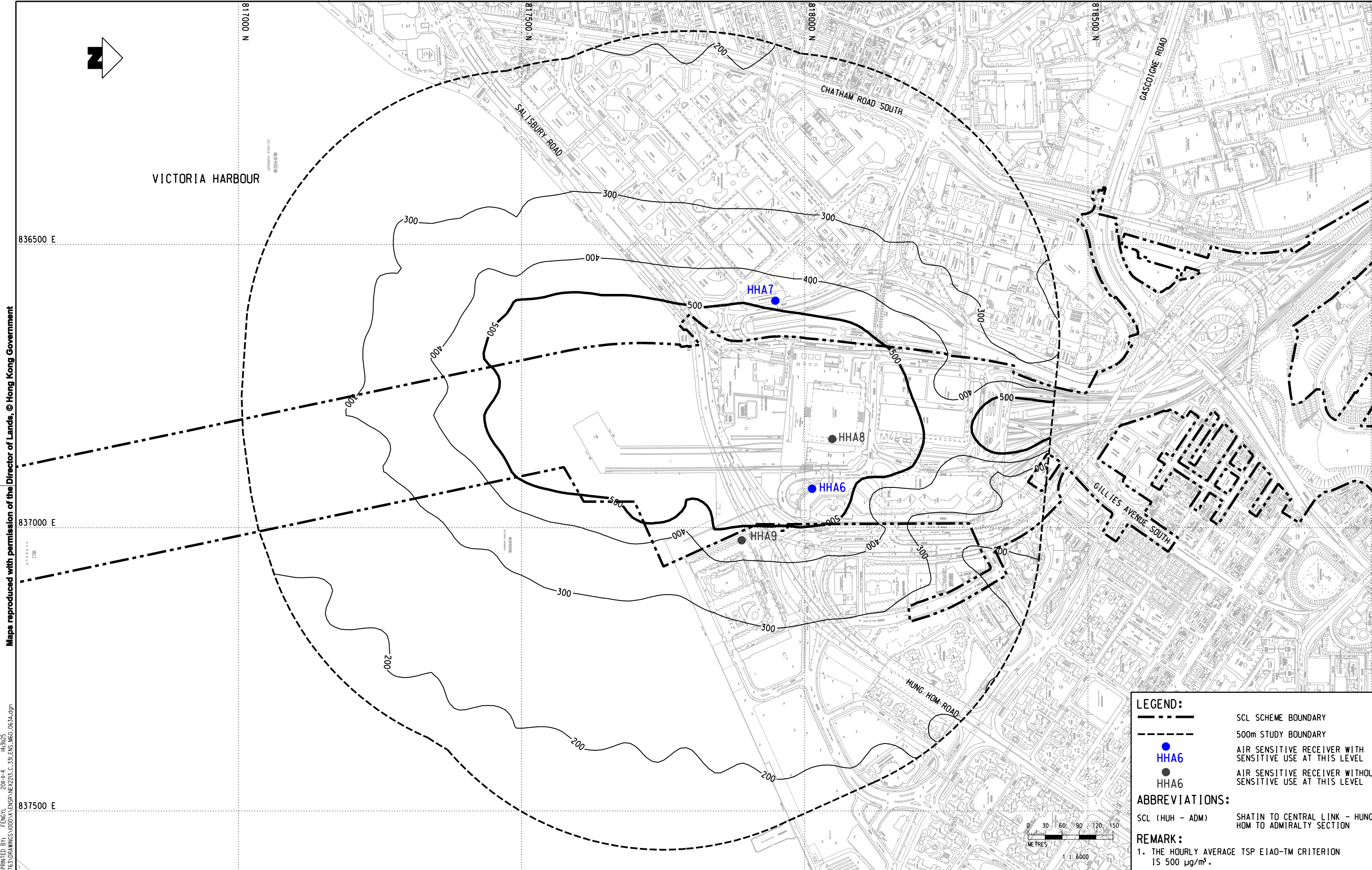




VICTORIA HARBOUR



Maps reproduced with permission of the Director of Lands, © Hong Kong Government

PLOT DIR: F:\usr\mtr\p1\DRIVER\WINDOWS\33 COC\016.dgn
MODELNAME: M60_063A.dgn
FILENAME: M60_063A.dgn

LEGEND:

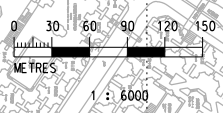
- SCL SCHEME BOUNDARY
- 500m STUDY BOUNDARY
- HHA6 AIR SENSITIVE RECEIVER WITH SENSITIVE USE AT THIS LEVEL
- HHA8 AIR SENSITIVE RECEIVER WITHOUT SENSITIVE USE AT THIS LEVEL

ABBREVIATIONS:

- SCL (HUH - ADM) SHATIN TO CENTRAL LINK - HUNG HOM TO ADMIRALTY SECTION

REMARK:

- THE HOURLY AVERAGE TSP EIAO-TM CRITERION IS 500 µg/m³.



REV	DESCRIPTION	BY	DATE	APPROVED	REV	DESCRIPTION	BY	DATE	APPROVED

DRAWN	WDF
DESIGNED	---
CHECKED	---
APPROVED	---
DATE	04/NOV/2011

MTR

SHATIN TO CENTRAL LINK

AECOM

ORIGINATOR

CADD REF. NEX2213_C_331_ENS_M60_063A.dgn

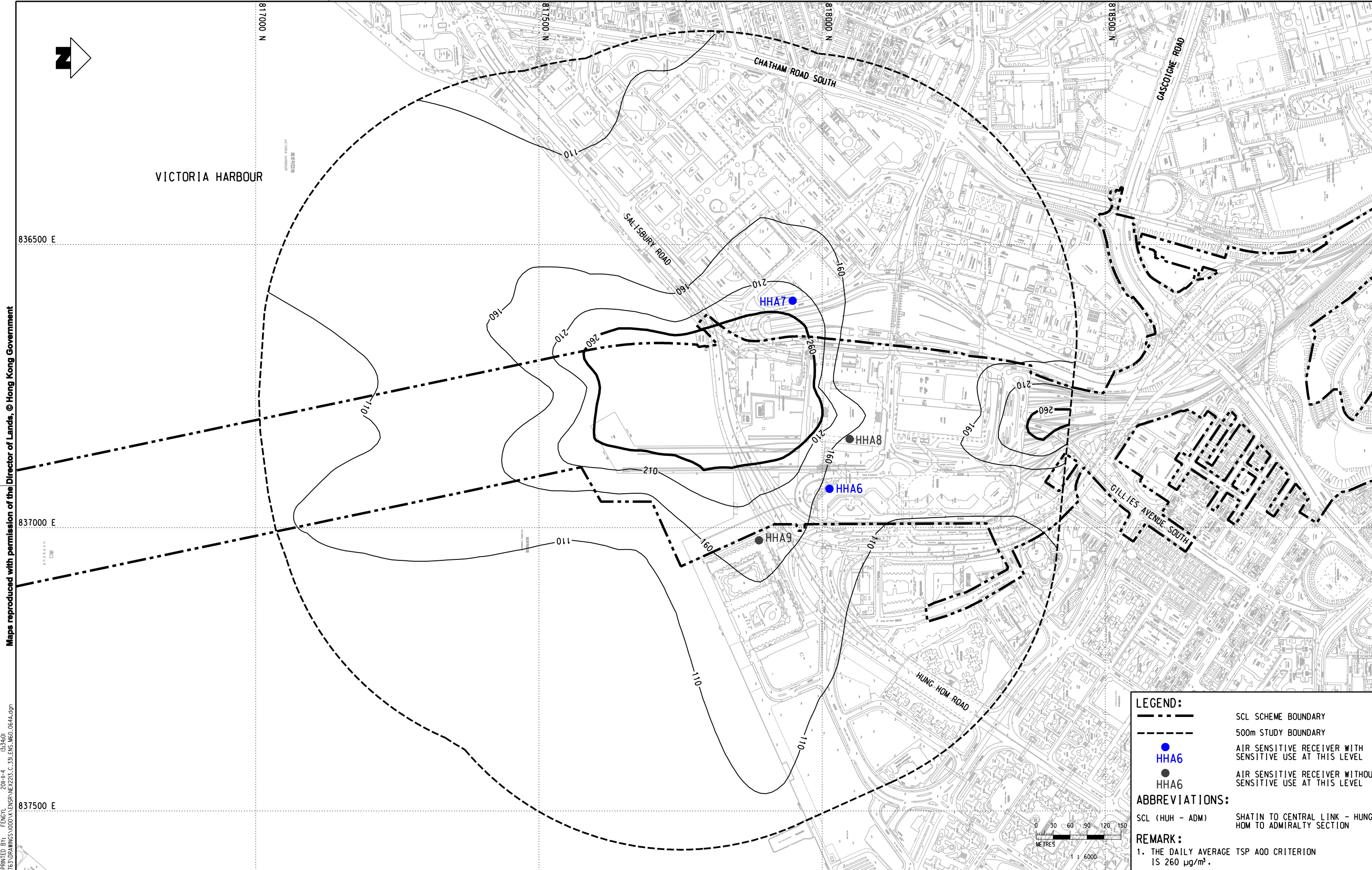
TITLE	NEX/2213 EIA STUDY FOR SCL (HUH - ADM) CONTOURS OF UNMITIGATED CUMULATIVE MAXIMUM 1-HOUR TSP CONCENTRATION IN µg/m³ AT 1.5m ABOVE GROUND LEVEL (KOWLOON SIDE)		
SCALE	1 : 6000 (A3)	FIGURE NO.	NEX2213/C/331/ENS/M60/063
REV.	A		



VICTORIA HARBOUR

Maps reproduced with permission of the Director of Lands, © Hong Kong Government

PLOT DRY: C:\usr\mset\mtr\p\p\DRIVER\WINDOWS\X3\COO\016_r.dwt
MODEL NAME: NEX2213_C_331_ENS_M60_064.dgn
FILE NAME: NEX2213_C_331_ENS_M60_064.dgn



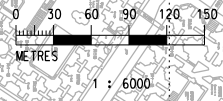
- LEGEND:**
- SCL SCHEME BOUNDARY
 - 500m STUDY BOUNDARY
 - HHA6 AIR SENSITIVE RECEIVER WITH SENSITIVE USE AT THIS LEVEL
 - HHA6 AIR SENSITIVE RECEIVER WITHOUT SENSITIVE USE AT THIS LEVEL

ABBREVIATIONS:

SCL (HUH - ADM) SHATIN TO CENTRAL LINK - HUNG HOM TO ADMIRALTY SECTION

REMARK:

1. THE DAILY AVERAGE TSP AOD CRITERION IS 260 $\mu\text{g}/\text{m}^3$.



REV	DESCRIPTION	BY	DATE	APPROVED	REV	DESCRIPTION	BY	DATE	APPROVED

DRAWN	WDF
DESIGNED	---
CHECKED	---
APPROVED	---
DATE	04/NOV/2011

MTR

SHATIN TO CENTRAL LINK

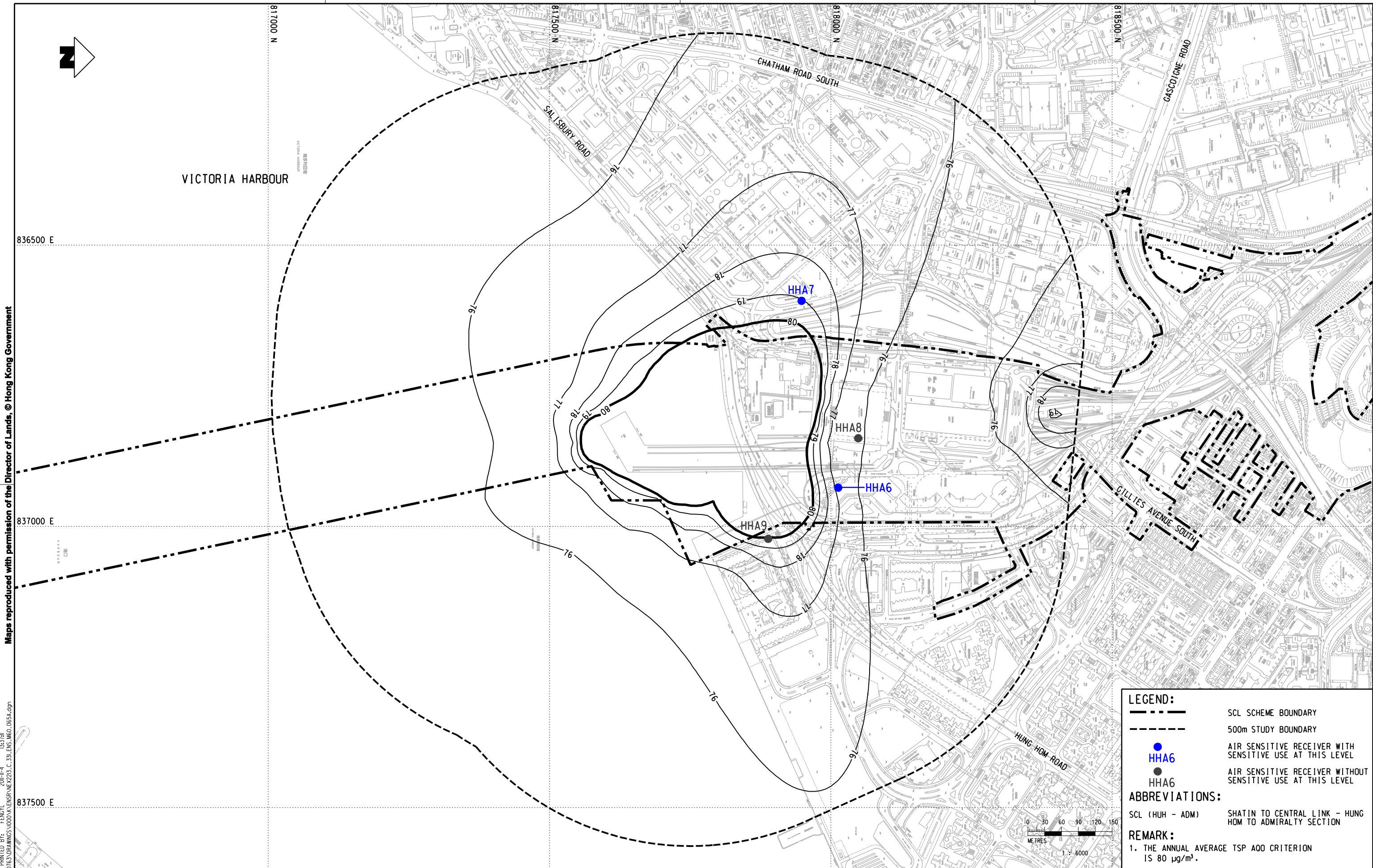
AECOM

CADD REF. NEX2213_C_331_ENS_M60_064.dgn

TITLE	NEX/2213 EIA STUDY FOR SCL (HUH - ADM) CONTOURS OF UNMITIGATED CUMULATIVE MAXIMUM 24-HOUR TSP CONCENTRATION IN $\mu\text{g}/\text{m}^3$ AT 1.5m ABOVE GROUND LEVEL (KOWLOON SIDE)		
SCALE	1 : 6000 (A3)	FIGURE NO.	NEX2213/C/331/ENS/M60/064
REV.	A		

Maps reproduced with permission of the Director of Lands, © Hong Kong Government

PLOT DRW: C:\usr\mstr\mtr\p\d\DRIVER\WINDOWS\X3\COL016.dgn
MODELNAME: M60065.dgn
FILENAME: M60065.dgn
PRINTED BY: FENCIL
DATE: 2011-11-04 15:37:11
M60065.dgn



LEGEND:

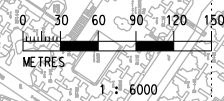
- SCL SCHEME BOUNDARY
- 500m STUDY BOUNDARY
- AIR SENSITIVE RECEIVER WITH SENSITIVE USE AT THIS LEVEL
- AIR SENSITIVE RECEIVER WITHOUT SENSITIVE USE AT THIS LEVEL

ABBREVIATIONS:

- SCL (HUH - ADM) SHATIN TO CENTRAL LINK - HUNG HOM TO ADMIRALTY SECTION

REMARK:

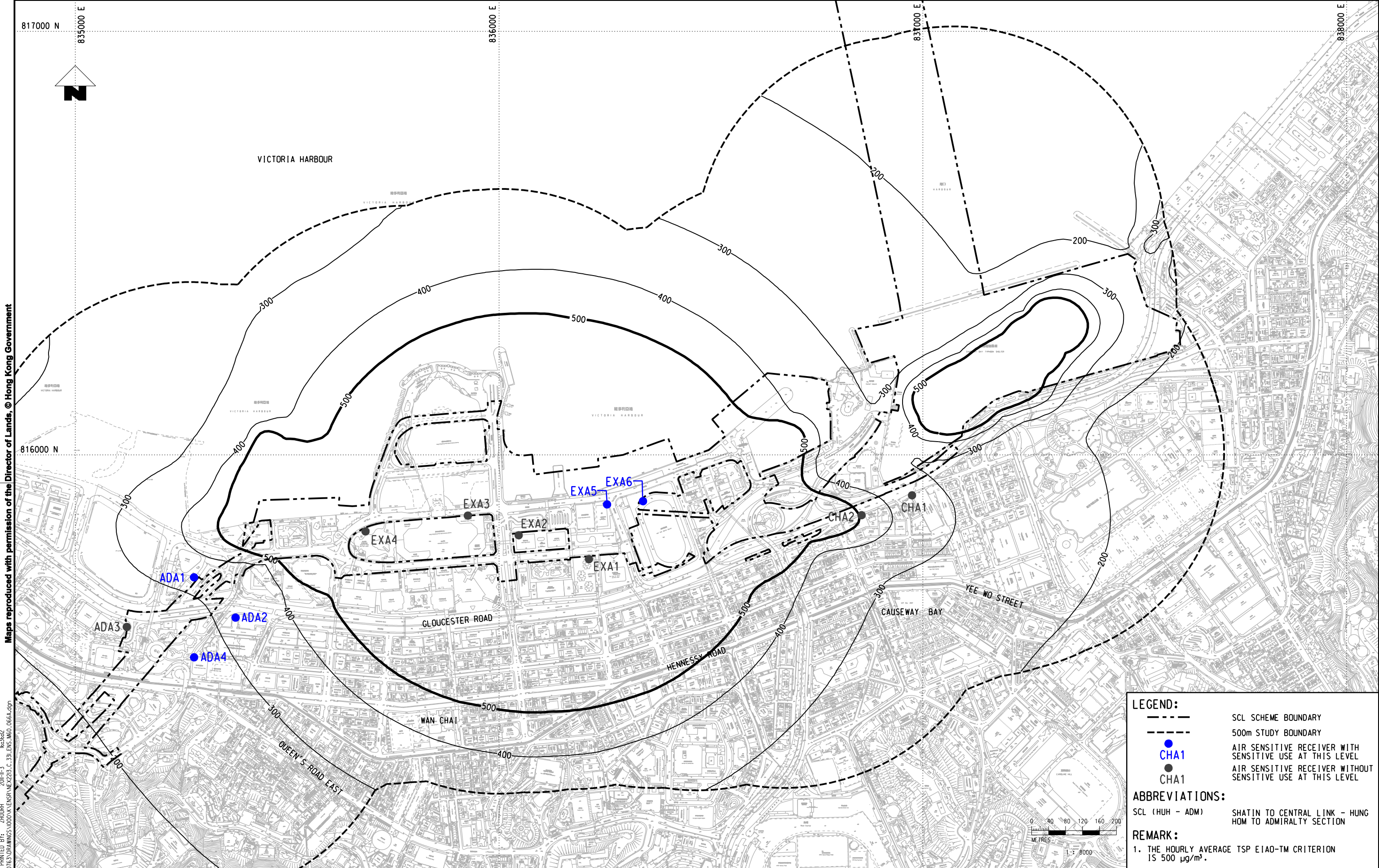
- THE ANNUAL AVERAGE TSP AOD CRITERION IS $80 \mu\text{g}/\text{m}^3$.



REV	DESCRIPTION	BY	DATE	APPROVED	REV	DESCRIPTION	BY	DATE	APPROVED

DRAWN	WDF		SHATIN TO CENTRAL LINK
DESIGNED	---		
CHECKED	---		
APPROVED	---		
DATE	04/NOV/2011	ORIGINATOR	
<small>DO NOT SCALE DRAWINGS. ALL DIMENSIONS SHALL BE VERIFIED ON SITE. (C) MTR CORPORATION LIMITED 2008 COPYRIGHT IN RESPECT OF THIS DRAWING / DOCUMENT IS OWNED BY THE MTR CORPORATION LIMITED OF HONG KONG. NO REPRODUCTION OF THE DRAWING / DOCUMENT OR ANY PART BY WHATEVER MEANS IS PERMITTED WITHOUT THE PRIOR WRITTEN CONSENT OF THE MTR CORPORATION LIMITED.</small>			
CADD REF.		NEX2213.C_331.ENS_M60_065A.dgn	

TITLE	NEX/2213 EIA STUDY FOR SCL (HUH - ADM) CONTOURS OF UNMITIGATED CUMULATIVE ANNUAL TSP CONCENTRATION IN $\mu\text{g}/\text{m}^3$ AT 1.5m ABOVE GROUND LEVEL (KOWLOON SIDE)		
SCALE	1 : 6000 (A3)	FIGURE NO.	NEX2213/C/331/ENS/M60/065
REV.	A		



Maps reproduced with permission of the Director of Lands, © Hong Kong Government

PLOT DIR: R:\us\mset\NTR\PI\DRIVER\WINDOWS\3.3\COL\016.dgn
 MODELNAME: M60066A.dgn
 FILENAME: M60066A.dgn
 DATE: 03/11/2011
 TIME: 10:00:00
 USER: dxl

LEGEND:

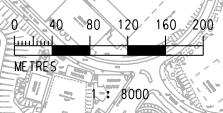
- SCL SCHEME BOUNDARY
- 500m STUDY BOUNDARY
- CHA1 AIR SENSITIVE RECEIVER WITH SENSITIVE USE AT THIS LEVEL
- CHA1 AIR SENSITIVE RECEIVER WITHOUT SENSITIVE USE AT THIS LEVEL

ABBREVIATIONS:

SCL (HUH - ADM) SHATIN TO CENTRAL LINK - HUNG HOM TO ADMIRALTY SECTION

REMARK:

1. THE HOURLY AVERAGE TSP EIAO-TM CRITERION IS 500 µg/m³.



REV	DESCRIPTION	BY	DATE	APPROVED	REV	DESCRIPTION	BY	DATE	APPROVED

DRAWN	DXL
CHECKED	---
APPROVED	---
DATE	03/NOV/2011

SHATIN TO CENTRAL LINK

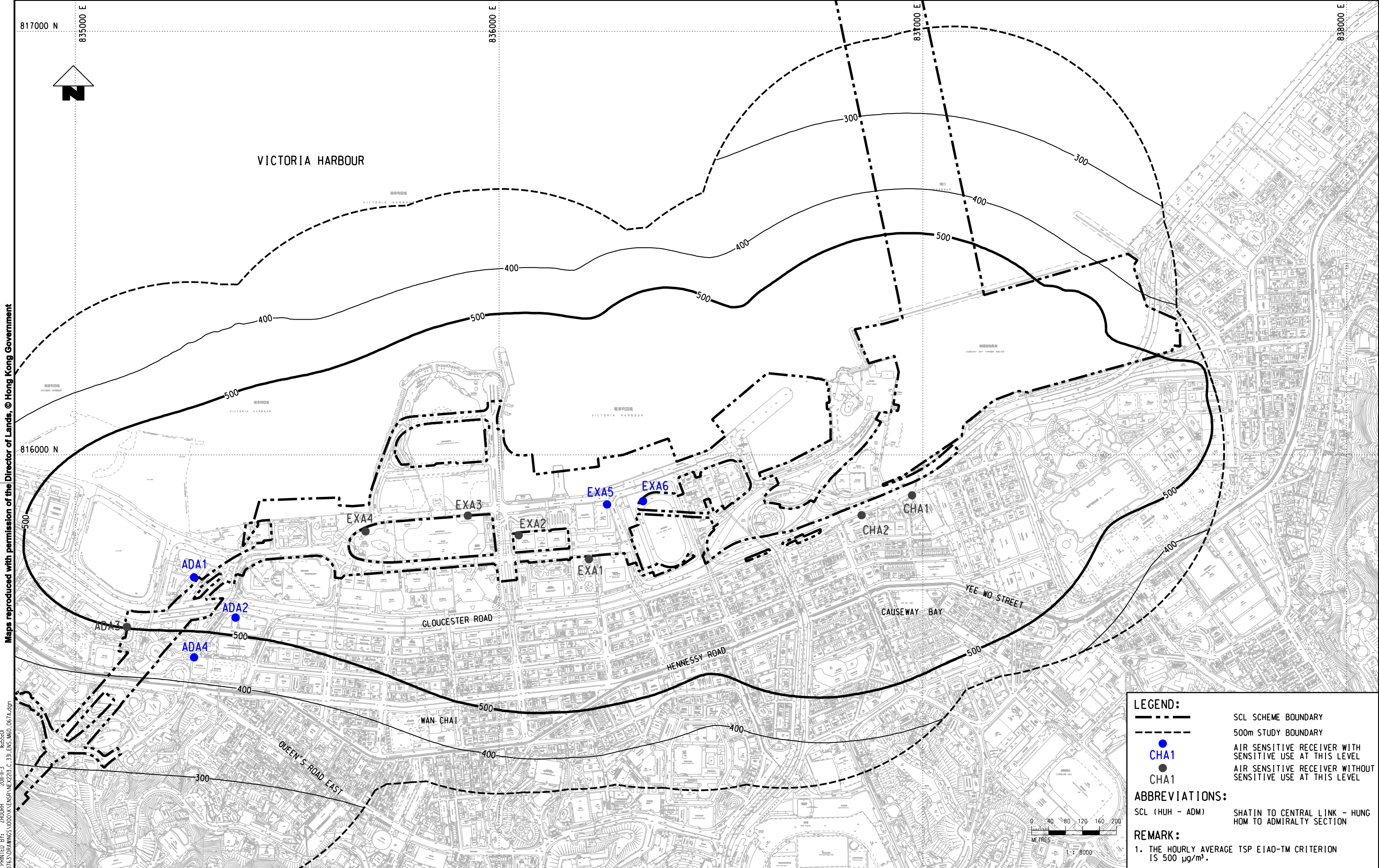
AECOM

CADD REF. NEX2213_C_331_ENS_M60_066A.dgn

TITLE

NEX/2213
EIA STUDY FOR SCL (HUH - ADM)
CONTOURS OF UNMITIGATED CUMULATIVE MAXIMUM 1-HOUR TSP CONCENTRATION IN µg/m³ AT 1.5m ABOVE GROUND LEVEL (HONG KONG SIDE) (SCENARIO 1)

SCALE 1 : 8000 (A3) **FIGURE NO.** NEX2213/C/331/ENS/M60/066 **REV.** A



Maps reproduced with permission of the Director of Lands, © Hong Kong Government

Plot Date: R:\us\msb\mtr\p\drawing\windows\33\col\016_r.dwg
 Model Name: M60_067.dwg
 File Name: M60_067.dwg

LEGEND:

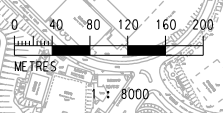
- SCL SCHEME BOUNDARY
- 500m STUDY BOUNDARY
- CHA1 AIR SENSITIVE RECEIVER WITH SENSITIVE USE AT THIS LEVEL
- CHA1 AIR SENSITIVE RECEIVER WITHOUT SENSITIVE USE AT THIS LEVEL

ABBREVIATIONS:

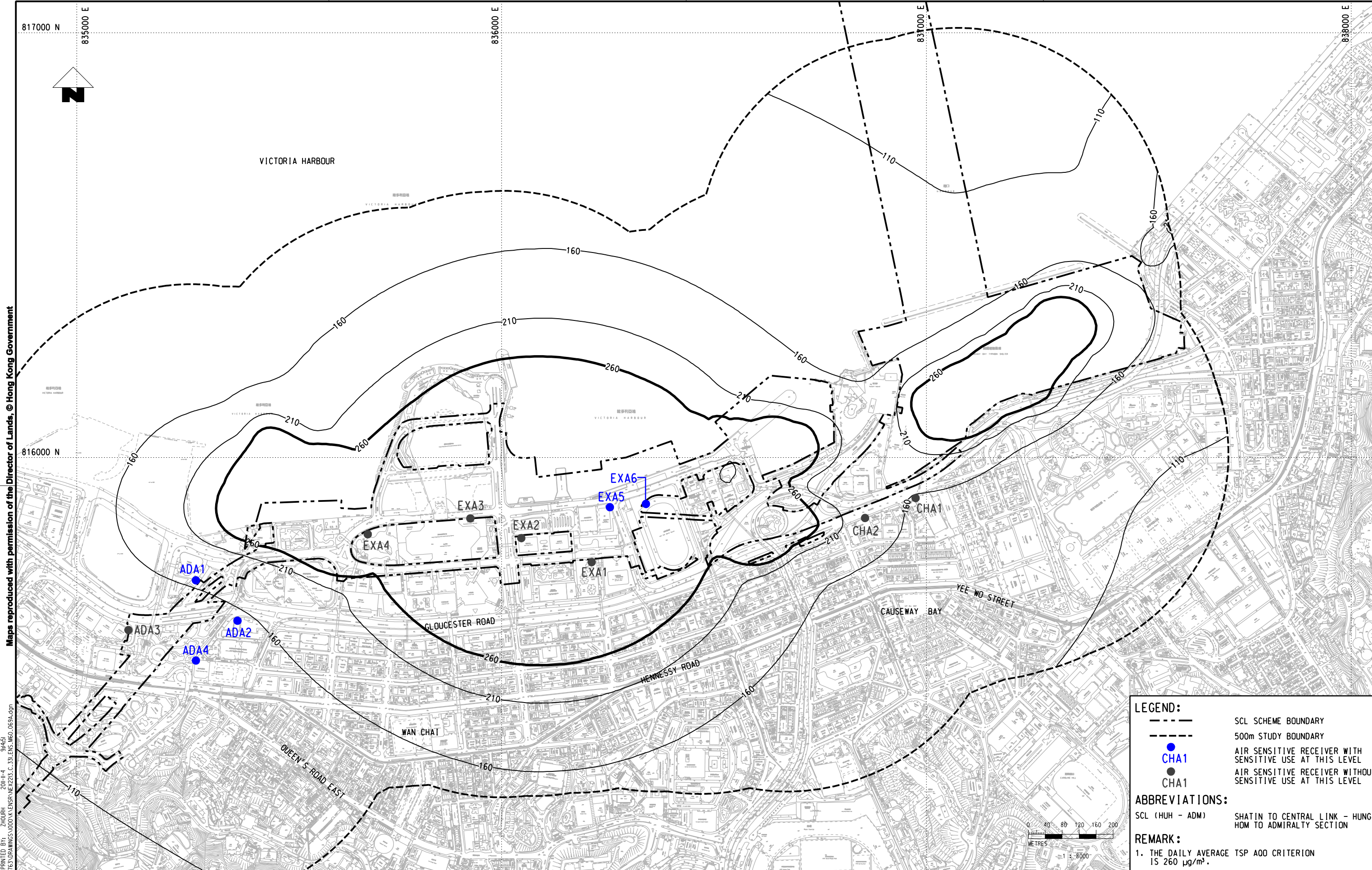
- SCL (HUH - ADM) SHATIN TO CENTRAL LINK - HUNG HOM TO ADMIRALTY SECTION

REMARK:

- THE HOURLY AVERAGE TSP EIAO-TM CRITERION IS 500 µg/m³.



DRAWN YJP				MTR				TITLE NEX/2213						
DESIGNED ---				ORIGINATOR AECOM				EIA STUDY FOR SCL (HUH - ADM)						
CHECKED ---				NEX2213_C_331_ENS_M60_067A.dgn				CONTOURS OF UNMITIGATED CUMULATIVE MAXIMUM 1-HOUR TSP CONCENTRATION IN µg/m³ AT 1.5m ABOVE GROUND LEVEL (HONG KONG SIDE) (SCENARIO 2)						
APPROVED ---				SCALE 1 : 8000 (A3)				FIGURE NO. NEX2213/C/331/ENS/M60/067						
DATE 03/NOV/2011				REV. A										
DO NOT SCALE DRAWINGS. ALL DIMENSIONS SHALL BE VERIFIED ON SITE.														
COPYRIGHT © 2008 BY AECOM. ALL RIGHTS RESERVED.														
REPRODUCTION OF THIS DRAWING OR ANY PART BY WHATEVER MEANS IS PERMITTED WITHOUT THE PRIOR WRITTEN CONSENT OF THE MTR CORPORATION LIMITED.														
REV	DESCRIPTION	BY	DATE	APPROVED	REV	DESCRIPTION	BY	DATE	APPROVED	REV	DESCRIPTION	BY	DATE	APPROVED



Maps reproduced with permission of the Director of Lands, © Hong Kong Government

PLOT DRW: R:\us\shat\mtr\p1\otriver\windows\3\30\010\02.dgn
 MODELNAME: M60_069A.dgn
 FILENAME: M60_069A.dgn
 DATE: 03/11/2011
 TIME: 10:14:00
 USER: dxl

LEGEND:

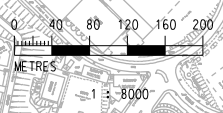
- SCL SCHEME BOUNDARY
- 500m STUDY BOUNDARY
- CHA1 AIR SENSITIVE RECEIVER WITH SENSITIVE USE AT THIS LEVEL
- CHA1 AIR SENSITIVE RECEIVER WITHOUT SENSITIVE USE AT THIS LEVEL

ABBREVIATIONS:

SCL (HUH - ADM) SHATIN TO CENTRAL LINK - HUNG HOM TO ADMIRALTY SECTION

REMARK:

1. THE DAILY AVERAGE TSP AOD CRITERION IS 260 µg/m³.



REV	DESCRIPTION	BY	DATE	APPROVED	REV	DESCRIPTION	BY	DATE	APPROVED

DRAWN	DXL
DESIGNED	---
CHECKED	---
APPROVED	---
DATE	03/NOV/2011

MTR

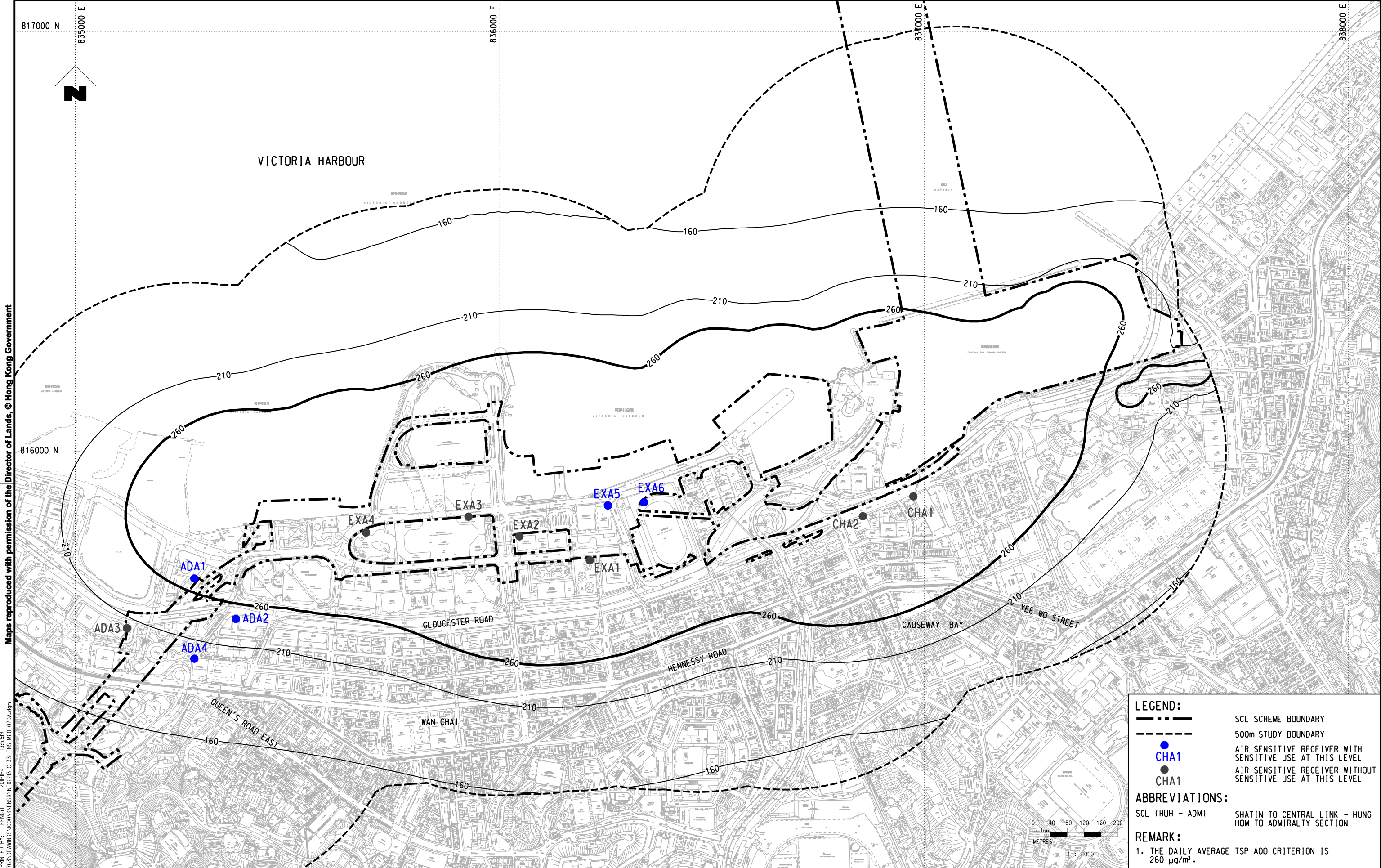
SHATIN TO CENTRAL LINK

AECOM

ORIGINATOR

CADD REF. NEX2213_C_331_ENS_M60_069A.dgn

TITLE	NEX/2213 EIA STUDY FOR SCL (HUH - ADM) CONTOURS OF UNMITIGATED CUMULATIVE MAXIMUM 24-HOUR TSP CONCENTRATION IN µg/m³ AT 1.5m ABOVE GROUND LEVEL (HONG KONG SIDE) (SCENARIO 1)	
SCALE	1 : 8000 (A3)	REV. A
FIGURE NO.	NEX2213/C/331/ENS/M60/069	



Maps reproduced with permission of the Director of Lands, © Hong Kong Government

Plot Drw: \\mtr\plott\DRIVER\WINDOWS\X3\COLOUR.dwt
 Model Name: \\mtr\plott\DRIVER\WINDOWS\X3\COLOUR.dwt
 File Name: \\mtr\plott\DRIVER\WINDOWS\X3\COLOUR.dwt

LEGEND:

- SCL SCHEME BOUNDARY
- 500m STUDY BOUNDARY
- CHA1 AIR SENSITIVE RECEIVER WITH SENSITIVE USE AT THIS LEVEL
- CHA1 AIR SENSITIVE RECEIVER WITHOUT SENSITIVE USE AT THIS LEVEL

ABBREVIATIONS:

SCL (HUH - ADM) SHATIN TO CENTRAL LINK - HUNG HOM TO ADMIRALTY SECTION

REMARK:

1. THE DAILY AVERAGE TSP AOD CRITERION IS 260 $\mu\text{g}/\text{m}^3$.

REV	DESCRIPTION	BY	DATE	APPROVED	REV	DESCRIPTION	BY	DATE	APPROVED

DRAWN	DXL
DESIGNED	---
CHECKED	---
APPROVED	---
DATE	04/NOV/2011

DO NOT SCALE DRAWINGS. ALL DIMENSIONS SHALL BE VERIFIED ON SITE.
 © MTR CORPORATION LIMITED 2008 COPYRIGHT IN RESPECT OF THIS DRAWING / DOCUMENT IS OWNED BY THE MTR CORPORATION LIMITED OF HONG KONG. NO REPRODUCTION OF THE DRAWING / DOCUMENT OR ANY PART BY WHATEVER MEANS IS PERMITTED WITHOUT THE PRIOR WRITTEN CONSENT OF THE MTR CORPORATION LIMITED.

MTR

SHATIN TO CENTRAL LINK

AECOM

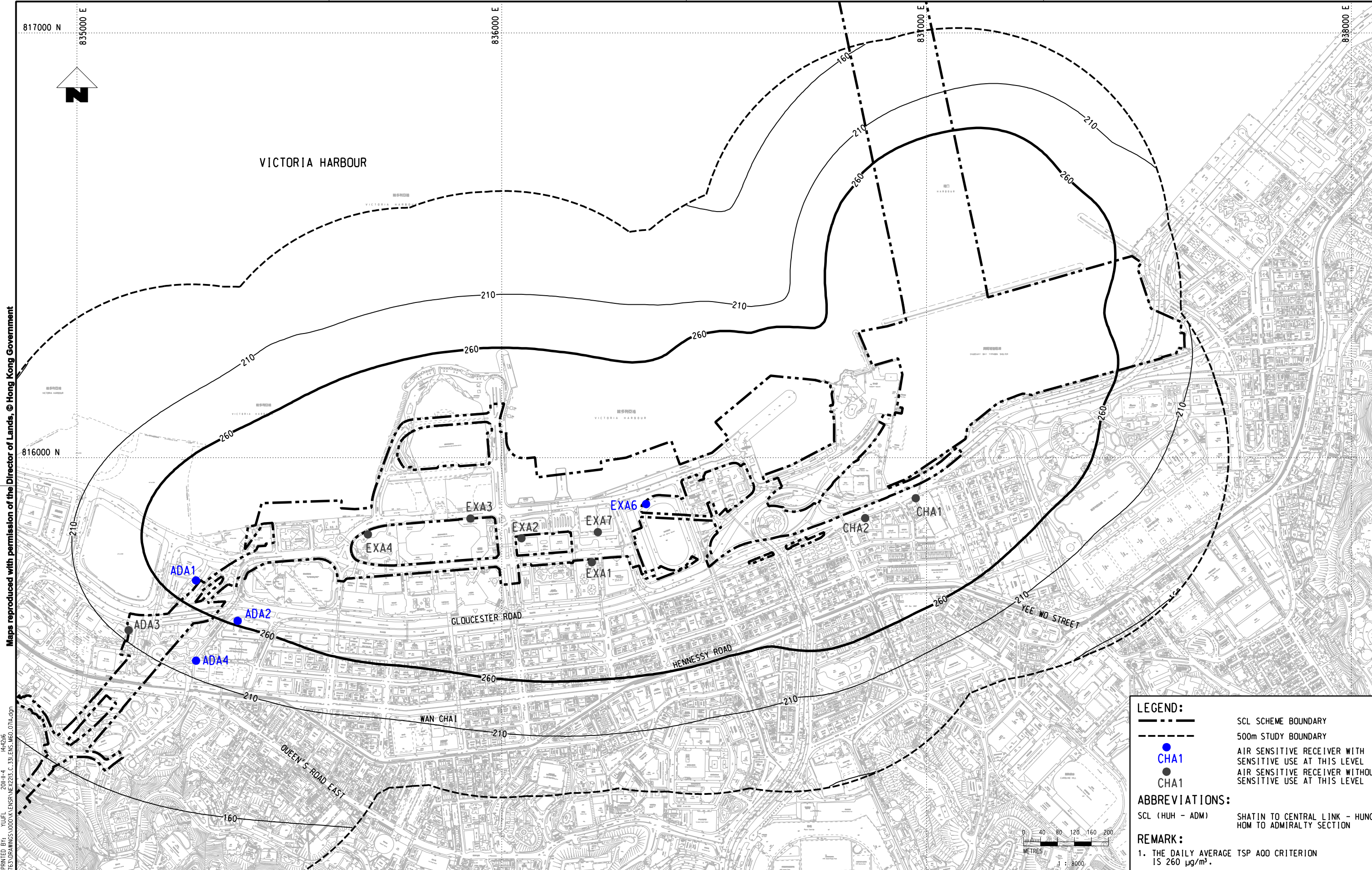
ORIGINATOR

CADD REF. NEX2213_C_331_ENS_M60_070A.dgn

TITLE

NEX/2213
EIA STUDY FOR SCL (HUH - ADM)
CONTOURS OF UNMITIGATED CUMULATIVE MAXIMUM 24-HOUR TSP CONCENTRATION IN $\mu\text{g}/\text{m}^3$ AT 1.5m ABOVE GROUND LEVEL (HONG KONG SIDE) (SCENARIO 2)

SCALE 1 : 8000 (A3) FIGURE NO. NEX2213/C/331/ENS/M60/070 REV. A



Maps reproduced with permission of the Director of Lands, © Hong Kong Government

PLOT DRW: R:\us\msh\mtr\p\d\DRIVER\WINDOWS\A3 COLOR.dwg
 MODELNAME: M60071A.dgn
 FILENAME: M60071A.dgn
 DATE: 2011-11-04
 TIME: 14:24:16

LEGEND:

- SCL SCHEME BOUNDARY
- 500m STUDY BOUNDARY
- CHA1 AIR SENSITIVE RECEIVER WITH SENSITIVE USE AT THIS LEVEL
- CHA1 AIR SENSITIVE RECEIVER WITHOUT SENSITIVE USE AT THIS LEVEL

ABBREVIATIONS:

- SCL (HUH - ADM) SHATIN TO CENTRAL LINK - HUNG HOM TO ADMIRALTY SECTION

REMARK:

1. THE DAILY AVERAGE TSP AOD CRITERION IS 260 $\mu\text{g}/\text{m}^3$.



REV	DESCRIPTION	BY	DATE	APPROVED	REV	DESCRIPTION	BY	DATE	APPROVED

DRAWN	DXL
DESIGNED	---
CHECKED	---
APPROVED	---
DATE	04/NOV/2011

MTR

SHATIN TO CENTRAL LINK

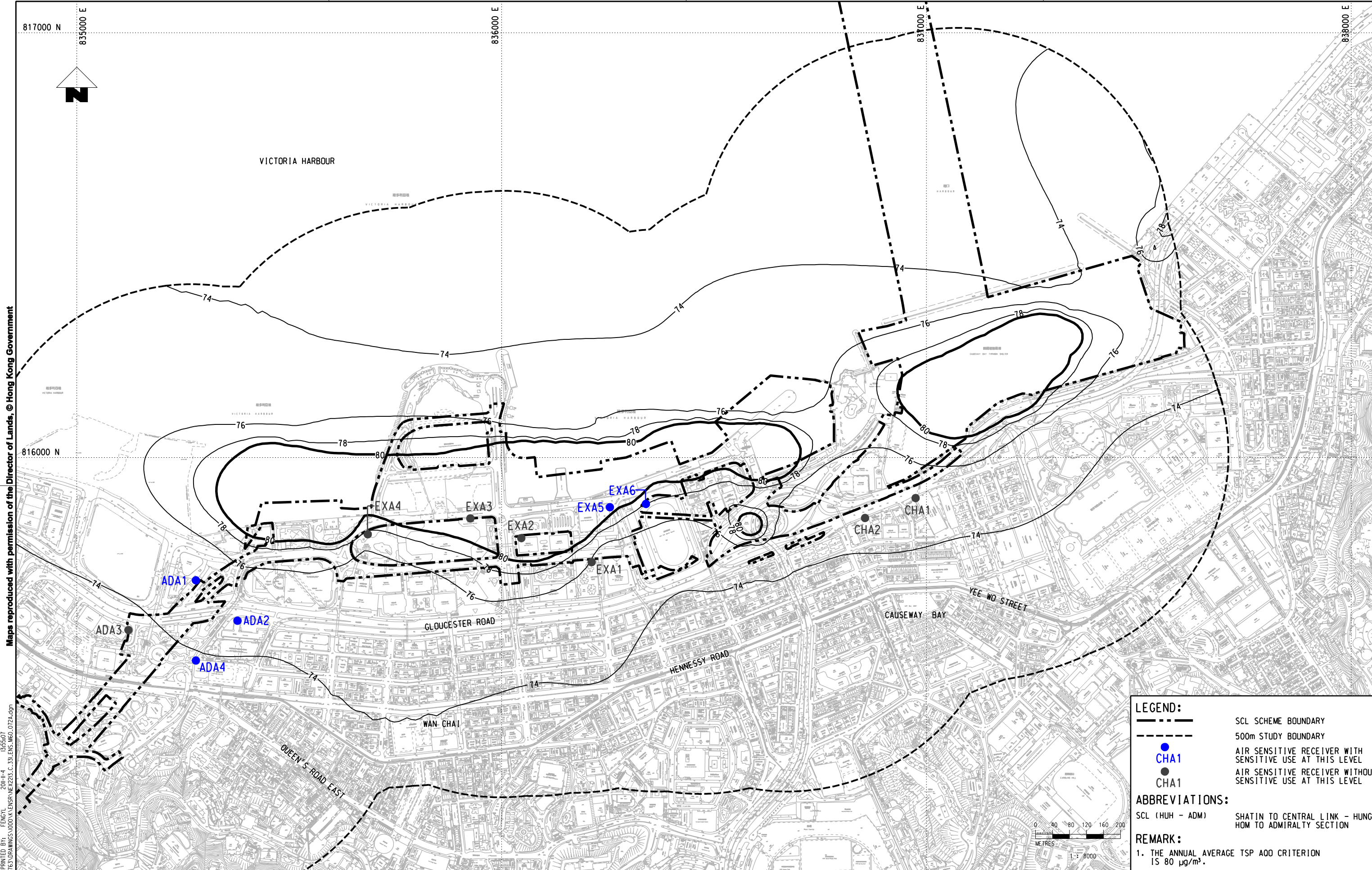
AECOM

CADD REF. NEX2213_C_331_ENS_M60_071A.dgn

TITLE

NEX/2213
EIA STUDY FOR SCL (HUH - ADM)
CONTOURS OF UNMITIGATED CUMULATIVE MAXIMUM 24-HOUR TSP CONCENTRATION IN $\mu\text{g}/\text{m}^3$ AT 1.5m ABOVE GROUND LEVEL (HONG KONG SIDE) (SCENARIO 3)

SCALE 1 : 8000 (A3) **FIGURE NO.** NEX2213/C/331/ENS/M60/071 **REV.** A



Maps reproduced with permission of the Director of Lands, © Hong Kong Government

PLOT DIR: F:\usr\mstr\mtr\p\drawing\windows\33\00\016_r.dgn
 MODEL NAME: NEX2213_C_331_ENS_M60_072A.dgn
 FILE NAME: NEX2213_C_331_ENS_M60_072A.dgn
 DATE: 04/11/2011 15:55:07

LEGEND:

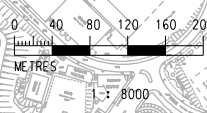
- SCL SCHEME BOUNDARY
- 500m STUDY BOUNDARY
- CHA1 AIR SENSITIVE RECEIVER WITH SENSITIVE USE AT THIS LEVEL
- CHA1 AIR SENSITIVE RECEIVER WITHOUT SENSITIVE USE AT THIS LEVEL

ABBREVIATIONS:

- SCL (HUH - ADM) SHATIN TO CENTRAL LINK - HUNG HOM TO ADMIRALTY SECTION

REMARK:

- THE ANNUAL AVERAGE TSP A00 CRITERION IS 80 $\mu\text{g}/\text{m}^3$.



REV	DESCRIPTION	BY	DATE	APPROVED	REV	DESCRIPTION	BY	DATE	APPROVED

DRAWN	DXL
DESIGNED	---
CHECKED	---
APPROVED	---
DATE	04/NOV/2011

DO NOT SCALE DRAWINGS. ALL DIMENSIONS SHALL BE VERIFIED ON SITE.
 (C) MTR CORPORATION LIMITED 2008 COPYRIGHT IN RESPECT OF THIS DRAWING / DOCUMENT IS OWNED BY THE MTR CORPORATION LIMITED OF HONG KONG. NO REPRODUCTION OF THE DRAWING / DOCUMENT OR ANY PART BY WHATEVER MEANS IS PERMITTED WITHOUT THE PRIOR WRITTEN CONSENT OF THE MTR CORPORATION LIMITED.

MTR

SHATIN TO CENTRAL LINK

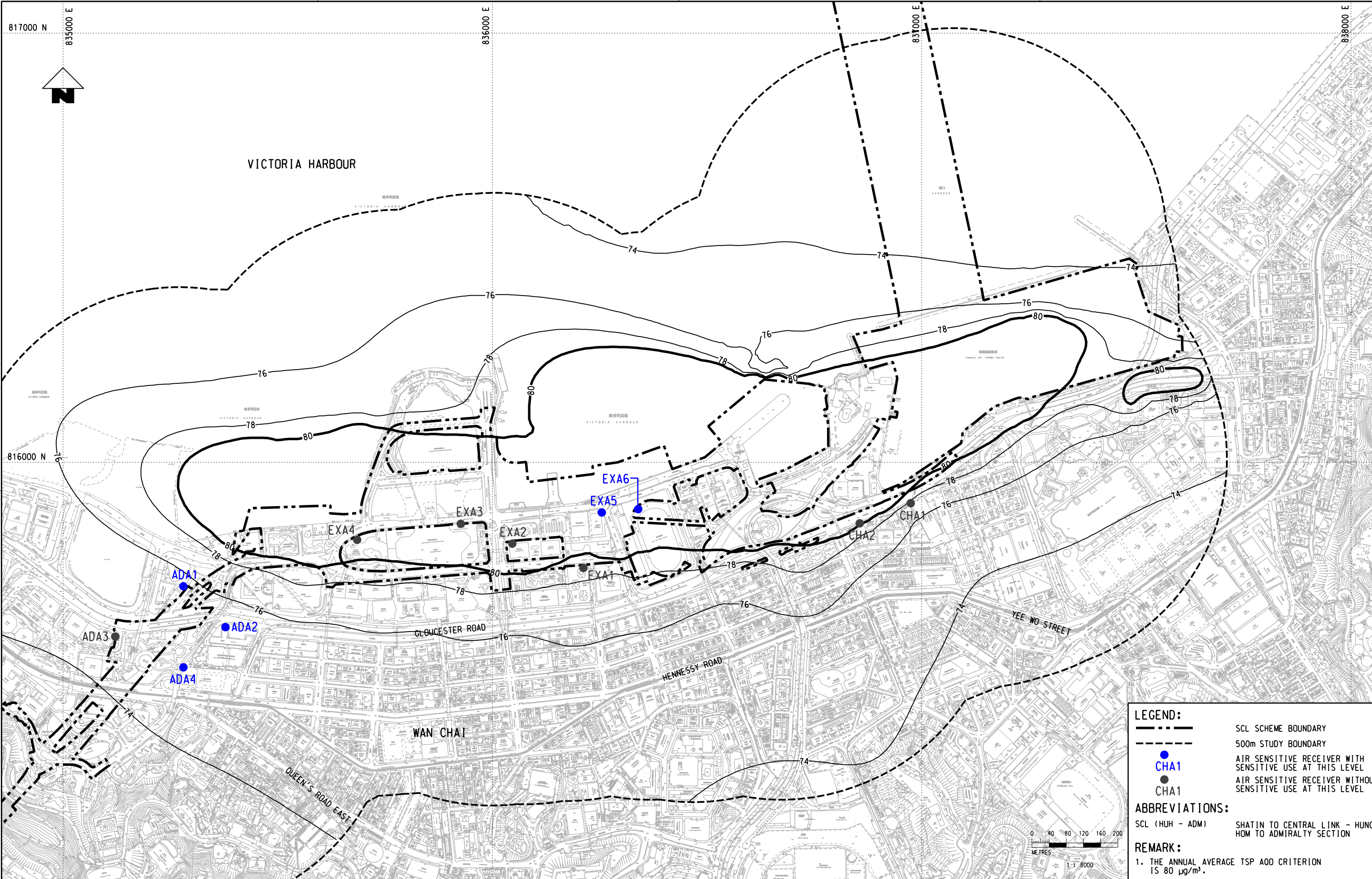
AECOM

CADD REF. NEX2213_C_331_ENS_M60_072A.dgn

TITLE
 NEX/2213
 EIA STUDY FOR SCL (HUH - ADM)
 CONTOURS OF UNMITIGATED CUMULATIVE ANNUAL TSP
 CONCENTRATION IN $\mu\text{g}/\text{m}^3$ AT 1.5m ABOVE GROUND LEVEL
 (HONG KONG SIDE) (SCENARIO 1)

SCALE 1 : 8000 (A3) FIGURE NO. NEX2213/C/331/ENS/M60/072 REV. A

Maps reproduced with permission of the Director of Lands, © Hong Kong Government



PLOT DRW: \\mtr\plotters\windows\33\c0c00r\d014
 MODELNAME: NEX2213\C_331_ENS_M60_073A.dgn
 FILENAME:

REV	DESCRIPTION	BY	DATE	APPROVED	REV	DESCRIPTION	BY	DATE	APPROVED

DRAWN	DXL
DESIGNED	---
CHECKED	---
APPROVED	---
DATE	04/NOV/2011

SHATIN TO CENTRAL LINK

 ORIGINATOR

TITLE
NEX/2213
EIA STUDY FOR SCL (HUH - ADM)
CONTOURS OF UNMITIGATED CUMULATIVE ANNUAL TSP
CONCENTRATION IN µg/m³ AT 1.5m ABOVE GROUND LEVEL
(HONG KONG SIDE) (SCENARIO 2)

SCALE
1 : 8000 (A3)

FIGURE NO.
NEX2213/C/331/ENS/M60/073

REV.
A

LEGEND:

SCL SCHEME BOUNDARY
 500m STUDY BOUNDARY
 CHA1 AIR SENSITIVE RECEIVER WITH SENSITIVE USE AT THIS LEVEL
 CHA1 AIR SENSITIVE RECEIVER WITHOUT SENSITIVE USE AT THIS LEVEL

ABBREVIATIONS:

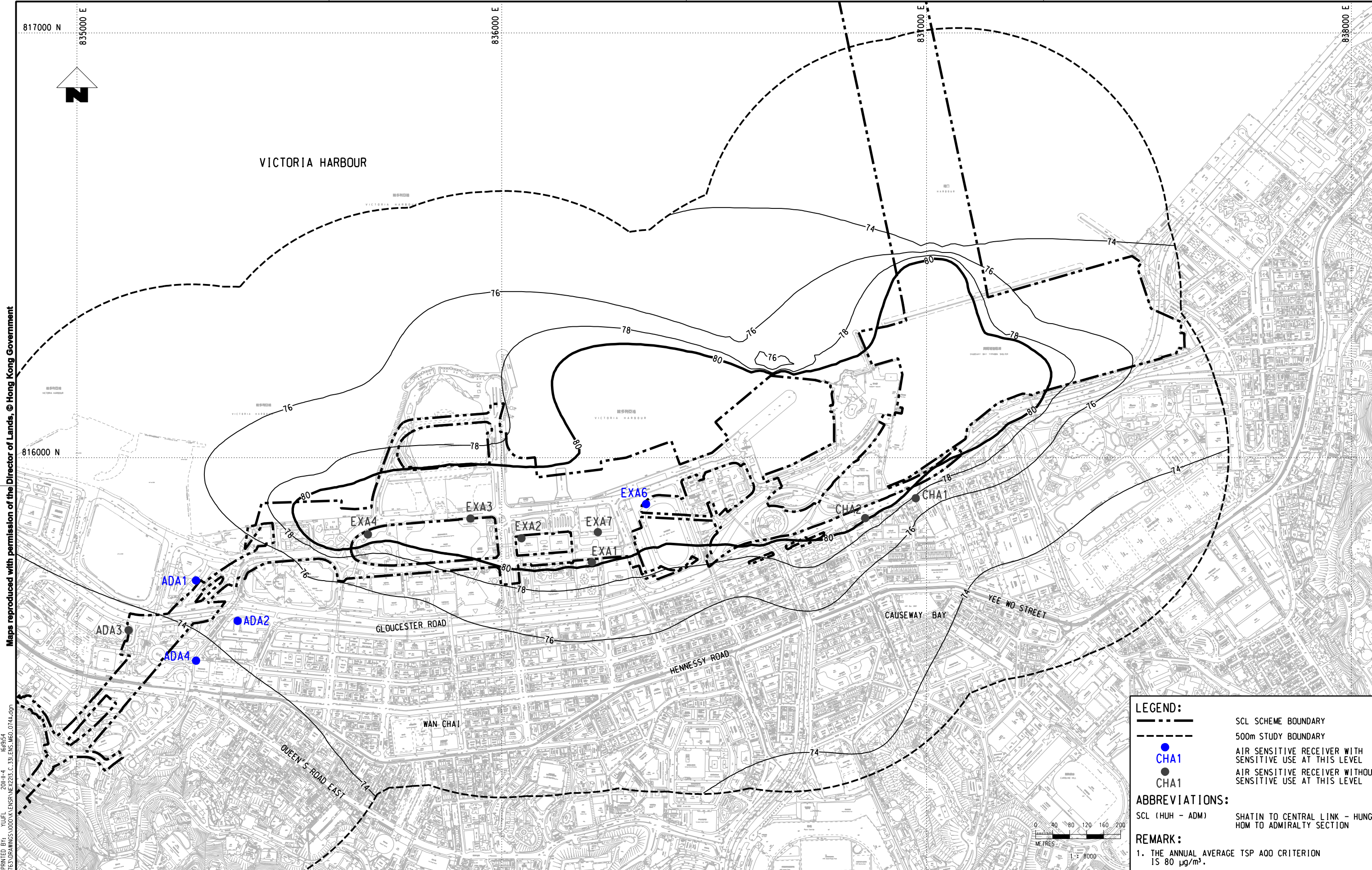
SCL (HUH - ADM) SHATIN TO CENTRAL LINK - HUNG
 HOM TO ADMIRALTY SECTION

REMARK:

1. THE ANNUAL AVERAGE TSP AOD CRITERION IS 80 µg/m³.

DO NOT SCALE DRAWINGS. ALL DIMENSIONS SHALL BE VERIFIED ON SITE.
 (C) MTR CORPORATION LIMITED 2008. COPYRIGHT IN RESPECT OF THIS DRAWING / DOCUMENT IS OWNED BY THE MTR CORPORATION LIMITED OF HONG KONG. NO REPRODUCTION OF THE DRAWING / DOCUMENT OR ANY PART BY WHATEVER MEANS IS PERMITTED WITHOUT THE PRIOR WRITTEN CONSENT OF THE MTR CORPORATION LIMITED.

CADD REF. NEX2213_C_331_ENS_M60_073A.dgn



Maps reproduced with permission of the Director of Lands, © Hong Kong Government

PLOT DRY: R:\ust\msh\mtr\p\d\DRIVER\WINDOWS\A3 COLOR.dgn
 MODELNAME: M60074.dgn
 FILENAME: M60074.dgn
 DATE: 2011-11-04
 USER: dxl

LEGEND:

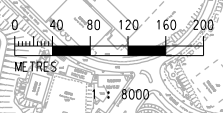
- SCL SCHEME BOUNDARY
- 500m STUDY BOUNDARY
- CHA1 AIR SENSITIVE RECEIVER WITH SENSITIVE USE AT THIS LEVEL
- CHA1 AIR SENSITIVE RECEIVER WITHOUT SENSITIVE USE AT THIS LEVEL

ABBREVIATIONS:

- SCL (HUH - ADM) SHATIN TO CENTRAL LINK - HUNG
- HOM TO ADMIRALTY SECTION

REMARK:

- THE ANNUAL AVERAGE TSP A00 CRITERION IS 80 $\mu\text{g}/\text{m}^3$.



REV	DESCRIPTION	BY	DATE	APPROVED	REV	DESCRIPTION	BY	DATE	APPROVED

DRAWN	DXL
DESIGNED	---
CHECKED	---
APPROVED	---
DATE	04/NOV/2011

MTR

SHATIN TO CENTRAL LINK

AECOM

CADD REF. NEX2213_C_331_ENS_M60_074A.dgn

TITLE

NEX/2213
 EIA STUDY FOR SCL (HUH - ADM)
 CONTOURS OF UNMITIGATED CUMULATIVE ANNUAL TSP
 CONCENTRATION IN $\mu\text{g}/\text{m}^3$ AT 1.5m ABOVE GROUND LEVEL
 (HONG KONG SIDE) (SCENARIO 3)

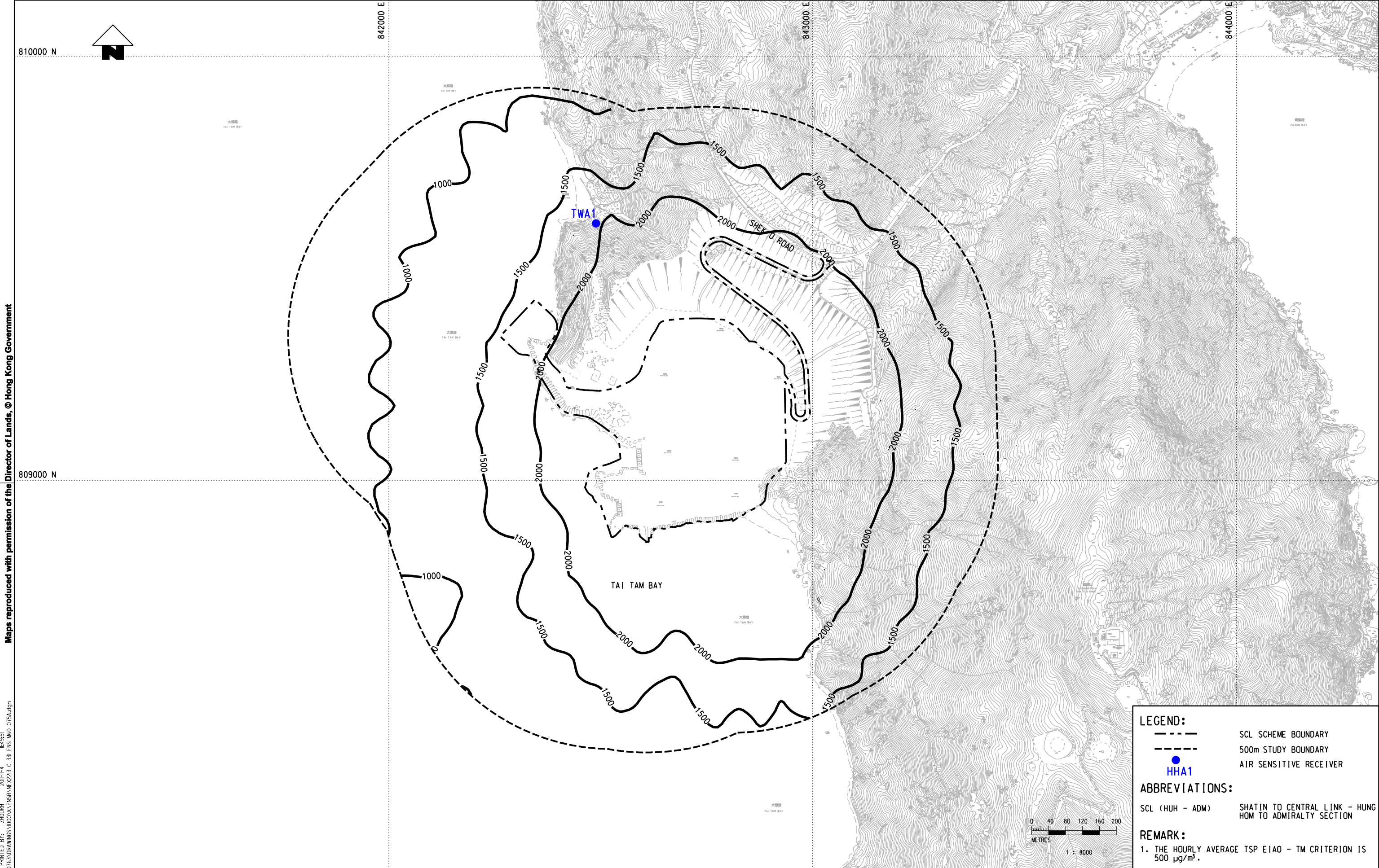
SCALE
 1 : 8000 (A3)

FIGURE NO.
 NEX2213/C/331/ENS/M60/074

REV.
 A

Maps reproduced with permission of the Director of Lands, © Hong Kong Government

PLOT DIR: R:\us\mset\MTR\PI\DRIVER\WINDOWS\33 COL\016.dgn
 MODELNAME: M60_075A.dgn
 FILENAME: M60_075A.dgn
 PRINTED BY: ZHOUYU
 DATE: 2011/11/4 14:56:51



LEGEND:

- SCL SCHEME BOUNDARY
- 500m STUDY BOUNDARY
- HHA1 AIR SENSITIVE RECEIVER

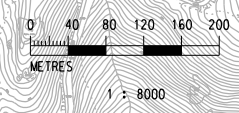
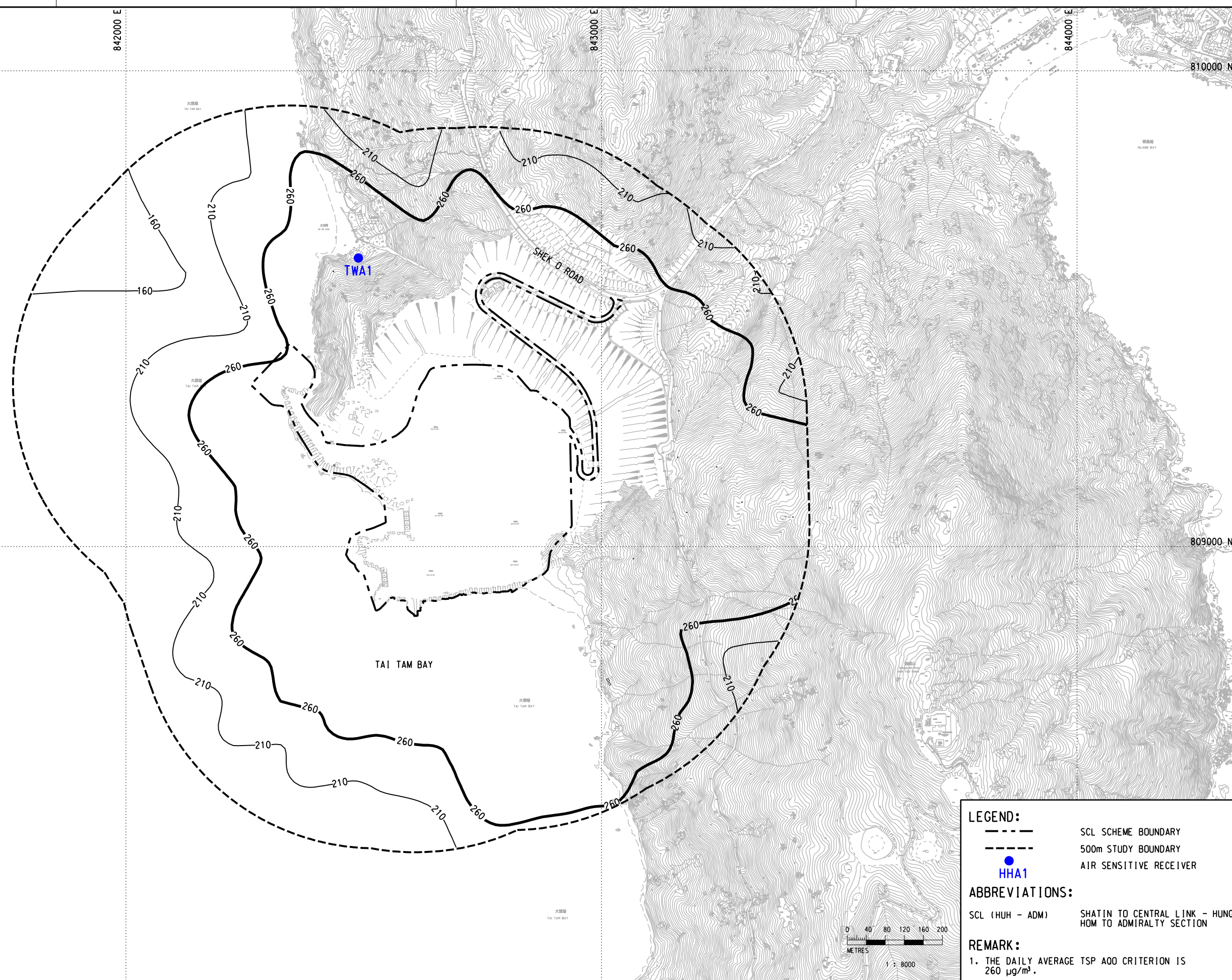
ABBREVIATIONS:

- SCL (HUH - ADM) SHATIN TO CENTRAL LINK - HUNG HOM TO ADMIRALTY SECTION

REMARK:

- THE HOURLY AVERAGE TSP EIAO - TM CRITERION IS 500 $\mu\text{g}/\text{m}^3$.

DRAWN		DXL			TITLE NEX/2213 EIA STUDY FOR SCL (HUH - ADM) CONTOURS OF UNMITIGATED MAXIMUM 1-HOUR TSP CONCENTRATION IN $\mu\text{g}/\text{m}^3$ AT 1.5m ABOVE GROUND LEVEL (SHEK O)					
DESIGNED		---								
CHECKED		---								
APPROVED		---								
DATE		04/NOV/2011		ORIGINATOR						
DO NOT SCALE DRAWINGS. ALL DIMENSIONS SHALL BE VERIFIED ON SITE. © MTR CORPORATION LIMITED 2008 COPYRIGHT IN RESPECT OF THIS DRAWING / DOCUMENT IS OWNED BY THE MTR CORPORATION LIMITED OF HONG KONG. NO REPRODUCTION OF THE DRAWING / DOCUMENT OR ANY PART BY WHATEVER MEANS IS PERMITTED WITHOUT THE PRIOR WRITTEN CONSENT OF THE MTR CORPORATION LIMITED.		CADD REF.		NEX2213_C_331_ENS_M60_075A.dgn						
REV	DESCRIPTION	BY	DATE	APPROVED	BY	DATE	APPROVED	SCALE	FIGURE NO.	REV.
								1 : 8000 (A3)	NEX2213/C/331/ENS/M60/075	A



LEGEND:
 - - - - SCL SCHEME BOUNDARY
 - - - - 500m STUDY BOUNDARY
 ● HHA1 AIR SENSITIVE RECEIVER

ABBREVIATIONS:
 SCL (HUH - ADM) SHATIN TO CENTRAL LINK - HUNG HOM TO ADMIRALTY SECTION

REMARK:
 1. THE DAILY AVERAGE TSP AOD CRITERION IS 260 µg/m³.

REV	DESCRIPTION	BY	DATE	APPROVED	REV	DESCRIPTION	BY	DATE	APPROVED

DRAWN	DXL
DESIGNED	---
CHECKED	---
APPROVED	---
DATE	26/NOV/2010

MTR

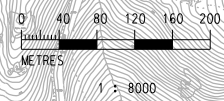
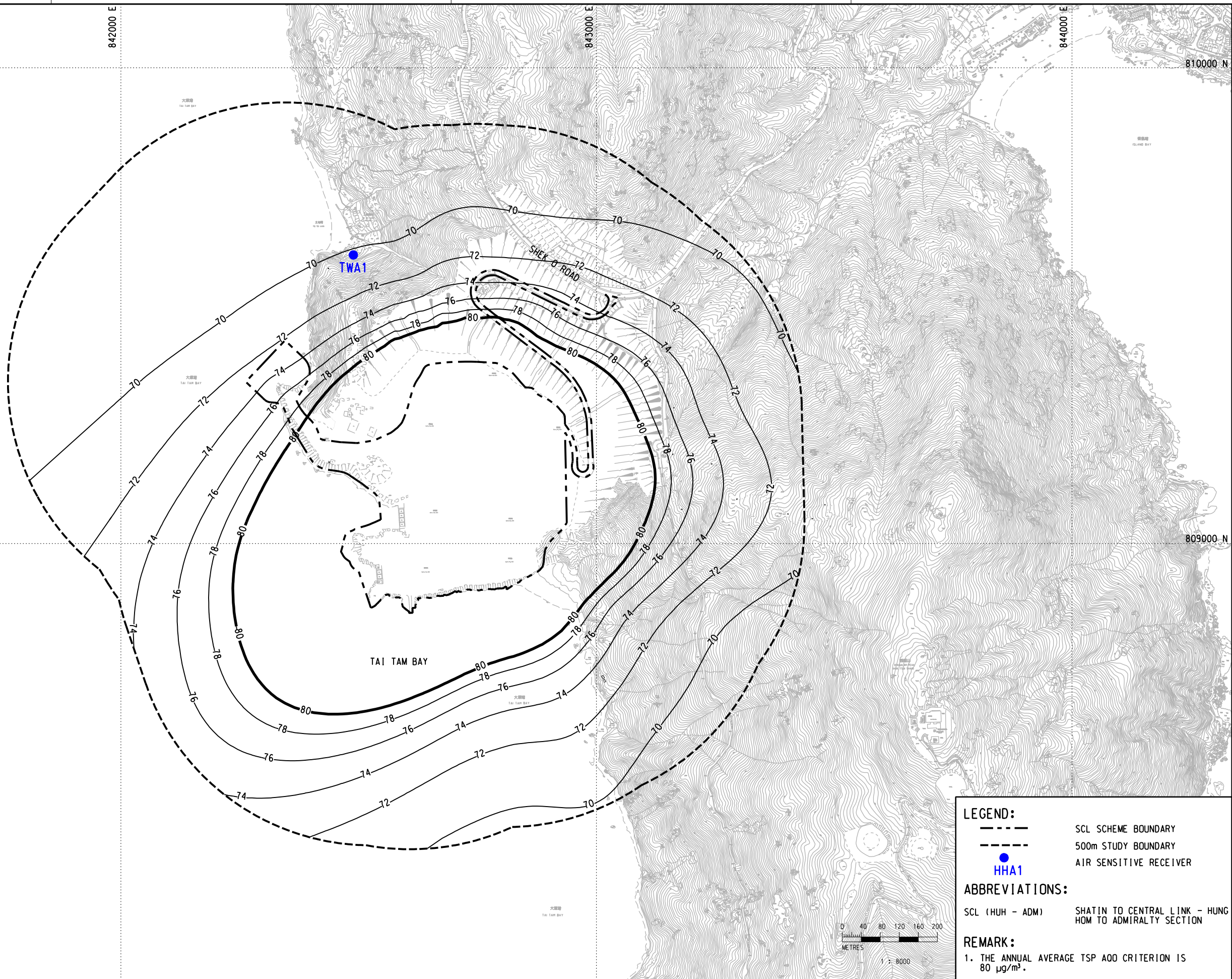
SHATIN TO CENTRAL LINK

AECOM

ORIGINATOR

CADD REF. NEX2213_C_331_ENS_M60_076A.dgn

TITLE	NEX/2213 EIA STUDY FOR SCL (HUH - ADM) CONTOURS OF UNMITIGATED MAXIMUM 24-HOUR TSP CONCENTRATION IN µg/m³ AT 1.5m ABOVE GROUND LEVEL (SHEK O)
SCALE	1 : 8000 (A3)
FIGURE NO.	NEX2213/C/331/ENS/M60/076
REV.	A



LEGEND:
 - - - - SCL SCHEME BOUNDARY
 500m STUDY BOUNDARY
 ● HHA1 AIR SENSITIVE RECEIVER

ABBREVIATIONS:
 SCL (HUH - ADM) SHATIN TO CENTRAL LINK - HUNG HOM TO ADMIRALTY SECTION

REMARK:
 1. THE ANNUAL AVERAGE TSP AOD CRITERION IS 80 µg/m³.

REV	DESCRIPTION	BY	DATE	APPROVED	REV	DESCRIPTION	BY	DATE	APPROVED

DRAWN	DXL
DESIGNED	---
CHECKED	---
APPROVED	---
DATE	04/NOV/2011

MTR

SHATIN TO CENTRAL LINK

AECOM

ORIGINATOR

CADD REF. NEX2213_C_331_ENS_M60_077A.dgn

TITLE	NEX/2213 EIA STUDY FOR SCL (HUH - ADM) CONTOURS OF UNMITIGATED ANNUAL AVERAGE TSP CONCENTRATION IN µg/m³ AT 1.5m ABOVE GROUND LEVEL (SHEK O)		
SCALE	1 : 8000 (A3)	FIGURE NO.	NEX2213/C/331/ENS/M60/077
REV.	A		