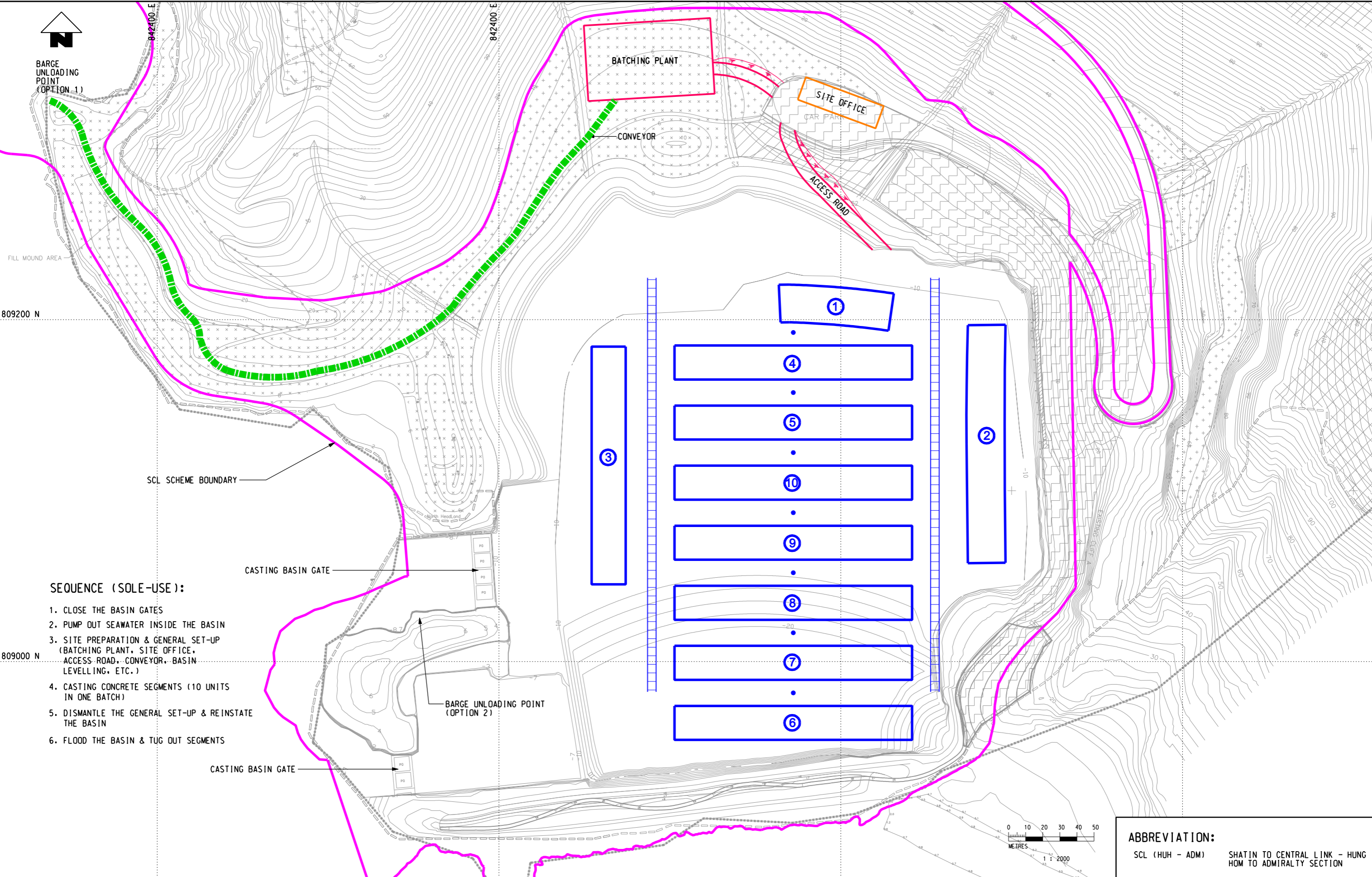




BARGE UNLOADING POINT (OPTION 1)



SEQUENCE (SOLE-USE):

1. CLOSE THE BASIN GATES
2. PUMP OUT SEAWATER INSIDE THE BASIN
3. SITE PREPARATION & GENERAL SET-UP (BATCHING PLANT, SITE OFFICE, ACCESS ROAD, CONVEYOR, BASIN LEVELLING, ETC.)
4. CASTING CONCRETE SEGMENTS (10 UNITS IN ONE BATCH)
5. DISMANTLE THE GENERAL SET-UP & REINSTATE THE BASIN
6. FLOOD THE BASIN & TUG OUT SEGMENTS



ABBREVIATION:
 SCL (HUH - ADM) SHATIN TO CENTRAL LINK - HUNG HOM TO ADMIRALTY SECTION

PLOT DRW: R:\ustinet\MTR\PILOTDRIVER\WINDOWS\33 COL\016.dgn
 MODELNAME: M50-026A.dgn
 FILENAME: M50-026A.dgn
 18/10/2010 10:45:35

REV	DESCRIPTION	BY	DATE	APPROVED	REV	DESCRIPTION	BY	DATE	APPROVED

DRAWN	DXL
DESIGNED	-
CHECKED	-
APPROVED	-
DATE	28/OCT/2010

MTR

SHATIN TO CENTRAL LINK

AECOM

ORIGINATOR

CADD REF. NEX2213_C_331_ENS_M50_026A.dgn

TITLE	NEX/2213 EIA STUDY FOR SCL (HUH - ADM) LAYOUT PLAN OF SHEK O CASTING YARD		
SCALE	1 : 2000 (A3)	FIGURE NO.	NEX2213/C/331/ENS/M50/026
REV.	A		