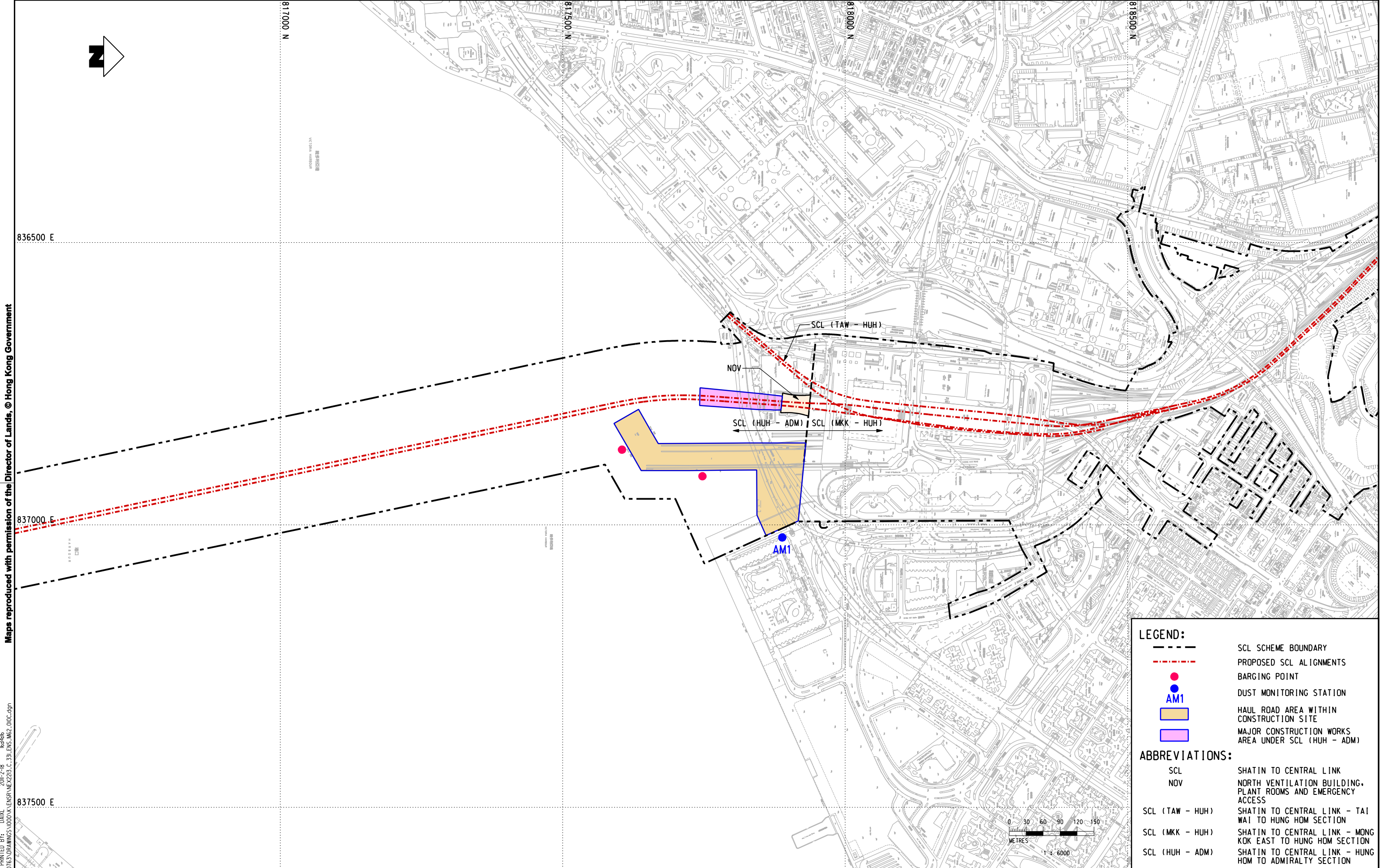


Maps reproduced with permission of the Director of Lands, © Hong Kong Government

PLOT DRW: R:\usr\mtr\p1\DRIVER\WINDOWS\3 COLOR\010.dgn  
MODELNAME: M:\projects\00050103\DRAWINGS\00050103\31\ENS\_M62\_010C.dgn  
FILENAME: 15446  
2011-2-18



LEGEND:

- SCL SCHEME BOUNDARY
- PROPOSED SCL ALIGNMENTS
- BARGING POINT
- DUST MONITORING STATION
- AM1
- HAUL ROAD AREA WITHIN CONSTRUCTION SITE
- MAJOR CONSTRUCTION WORKS AREA UNDER SCL (HUH - ADM)

ABBREVIATIONS:

- |                 |  |
|-----------------|--|
| SCL             | SHATIN TO CENTRAL LINK                                       |
| NOV             | NORTH VENTILATION BUILDING, PLANT ROOMS AND EMERGENCY ACCESS |
| SCL (TAW - HUH) | SHATIN TO CENTRAL LINK - TAI WAI TO HUNG HOM SECTION         |
| SCL (MKK - HUH) | SHATIN TO CENTRAL LINK - MONG KOK EAST TO HUNG HOM SECTION   |
| SCL (HUH - ADM) | SHATIN TO CENTRAL LINK - HUNG HOM TO ADMIRALTY SECTION       |

DRAWN	DXL
DESIGNED	---
CHECKED	---
APPROVED	---
DATE	25/JUN/2009



SHATIN TO CENTRAL LINK

AECOM

ORIGINATOR

CADD REF.

NEX2213.C\_331.ENS\_M62\_010C.dgn

TITLE  
NEX/2213  
EIA STUDY FOR SCL (HUH - ADM)  
LOCATIONS OF DUST MONITORING STATIONS

SCALE	FIGURE NO.	REV.
1 : 6000 (A3)	NEX2213/C/331/ENS/M62/010	C