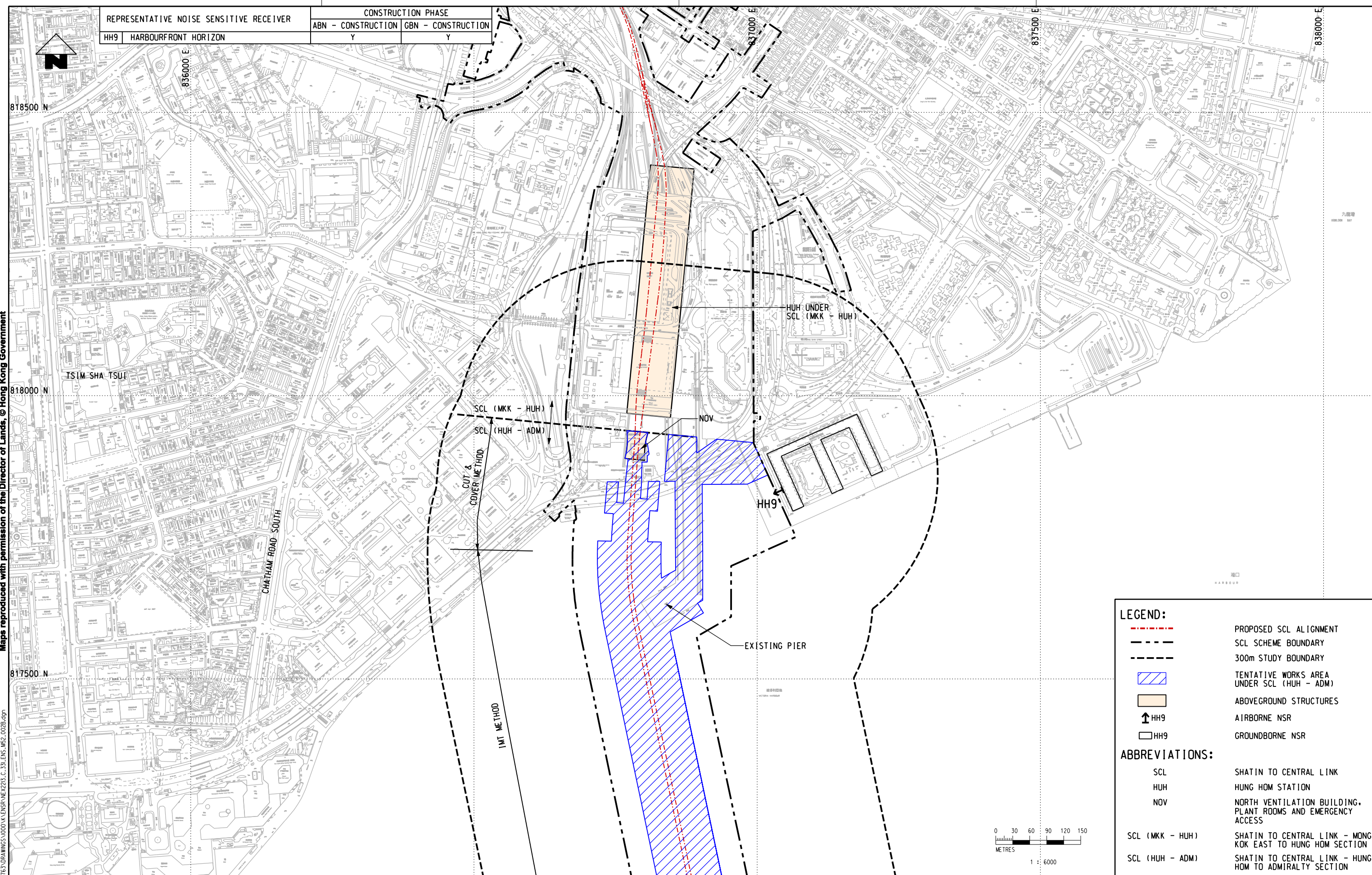


Maps reproduced with permission of the Director of Lands, © Hong Kong Government

PLOT DRY: R:\us\mset\NTR\PI\DRIVER\WINDOWS\33 COL\016.dgn  
 MODELNAME: M520213\_C\_331\_ENS\_M52\_002B.dgn  
 FILENAME: M520213\_C\_331\_ENS\_M52\_002B.dgn  
 PRN: 4324  
 DATE: 2011-10-24

REPRESENTATIVE NOISE SENSITIVE RECEIVER	CONSTRUCTION PHASE	
	ABN - CONSTRUCTION	GBN - CONSTRUCTION
HH9 HARBOURFRONT HORIZON	Y	Y

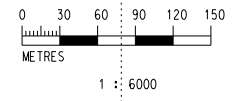


**LEGEND:**

- - - PROPOSED SCL ALIGNMENT
- SCL SCHEME BOUNDARY
- 300m STUDY BOUNDARY
- TENTATIVE WORKS AREA UNDER SCL (HUH - ADM)
- ABOVEGROUND STRUCTURES
- ↑ HH9 AIRBORNE NSR
- HH9 GROUND BORNE NSR

**ABBREVIATIONS:**

- SCL SHATIN TO CENTRAL LINK
- HUH HUNG HOM STATION
- NOV NORTH VENTILATION BUILDING, PLANT ROOMS AND EMERGENCY ACCESS
- SCL (MKK - HUH) SHATIN TO CENTRAL LINK - MONG KOK EAST TO HUNG HOM SECTION
- SCL (HUH - ADM) SHATIN TO CENTRAL LINK - HUNG HOM TO ADMIRALTY SECTION



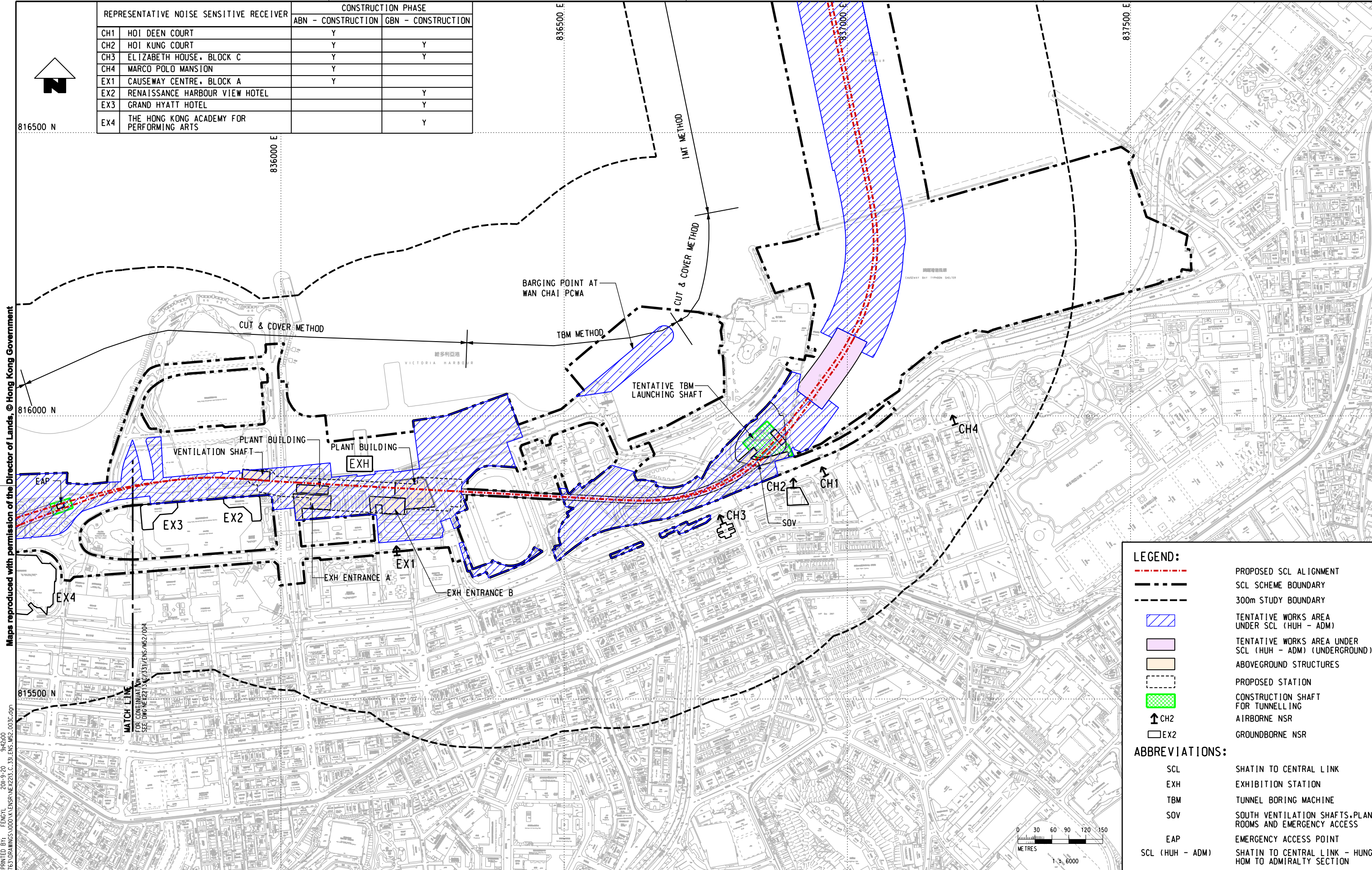
REV	DESCRIPTION	BY	DATE	APPROVED	REV	DESCRIPTION	BY	DATE	APPROVED

DRAWN	WK	 <b>SHATIN TO CENTRAL LINK</b> 
DESIGNED	---	
CHECKED	LCR	
APPROVED	---	
DATE	22/OCT/2010	
<small>DO NOT SCALE DRAWINGS. ALL DIMENSIONS SHALL BE VERIFIED ON SITE.        © MTR CORPORATION LIMITED 2008. COPYRIGHT IN RESPECT OF THIS DRAWING / DOCUMENT IS OWNED BY THE MTR CORPORATION LIMITED OF HONG KONG. NO REPRODUCTION OF THE DRAWING / DOCUMENT OR ANY PART BY WHATEVER MEANS IS PERMITTED WITHOUT THE PRIOR WRITTEN CONSENT OF THE MTR CORPORATION LIMITED.</small>		
CADD REF.		NEX2213_C_331_ENS_M52_002B.dgn

<b>TITLE</b> NEX/2213 EIA STUDY FOR SCL (HUH - ADM) LOCATION OF REPRESENTATIVE NOISE SENSITIVE RECEIVERS FOR CONSTRUCTION PHASE	
SCALE	FIGURE NO.
1 : 6000 (A3)	NEX2213/C/331/ENS/M52/002
REV.	B



REPRESENTATIVE NOISE SENSITIVE RECEIVER	CONSTRUCTION PHASE	
	ABN - CONSTRUCTION	GBN - CONSTRUCTION
CH1	HOI DEEN COURT	Y
CH2	HOI KUNG COURT	Y
CH3	ELIZABETH HOUSE, BLOCK C	Y
CH4	MARCO POLO MANSION	Y
EX1	CAUSEWAY CENTRE, BLOCK A	Y
EX2	RENAISSANCE HARBOUR VIEW HOTEL	Y
EX3	GRAND HYATT HOTEL	Y
EX4	THE HONG KONG ACADEMY FOR PERFORMING ARTS	Y



**LEGEND:**

- - - PROPOSED SCL ALIGNMENT
- SCL SCHEME BOUNDARY
- 300m STUDY BOUNDARY
- TENTATIVE WORKS AREA UNDER SCL (HUH - ADM)
- TENTATIVE WORKS AREA UNDER SCL (HUH - ADM) (UNDERGROUND)
- ABOVEGROUND STRUCTURES
- PROPOSED STATION
- CONSTRUCTION SHAFT FOR TUNNELLING
- ↑ CH2 AIRBORNE NSR
- EX2 GROUND BORNE NSR

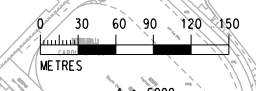
**ABBREVIATIONS:**

- SCL SHATIN TO CENTRAL LINK
- EXH EXHIBITION STATION
- TBM TUNNEL BORING MACHINE
- SOV SOUTH VENTILATION SHAFTS, PLANT ROOMS AND EMERGENCY ACCESS
- EAP EMERGENCY ACCESS POINT
- SCL (HUH - ADM) SHATIN TO CENTRAL LINK - HUNG HOM TO ADMIRALTY SECTION

Maps reproduced with permission of the Director of Lands, © Hong Kong Government

PLOT DRY: F:\us\mset\mtr\p\otdriven\windows\33\00\016\_r.dwt  
 MODEL NAME: MEX2213\_C\_331\_ENS\_M52\_003C.dgn  
 FILE NAME: MEX2213\_C\_331\_ENS\_M52\_003C.dgn  
 DATE: 2011-08-02 09:42:00

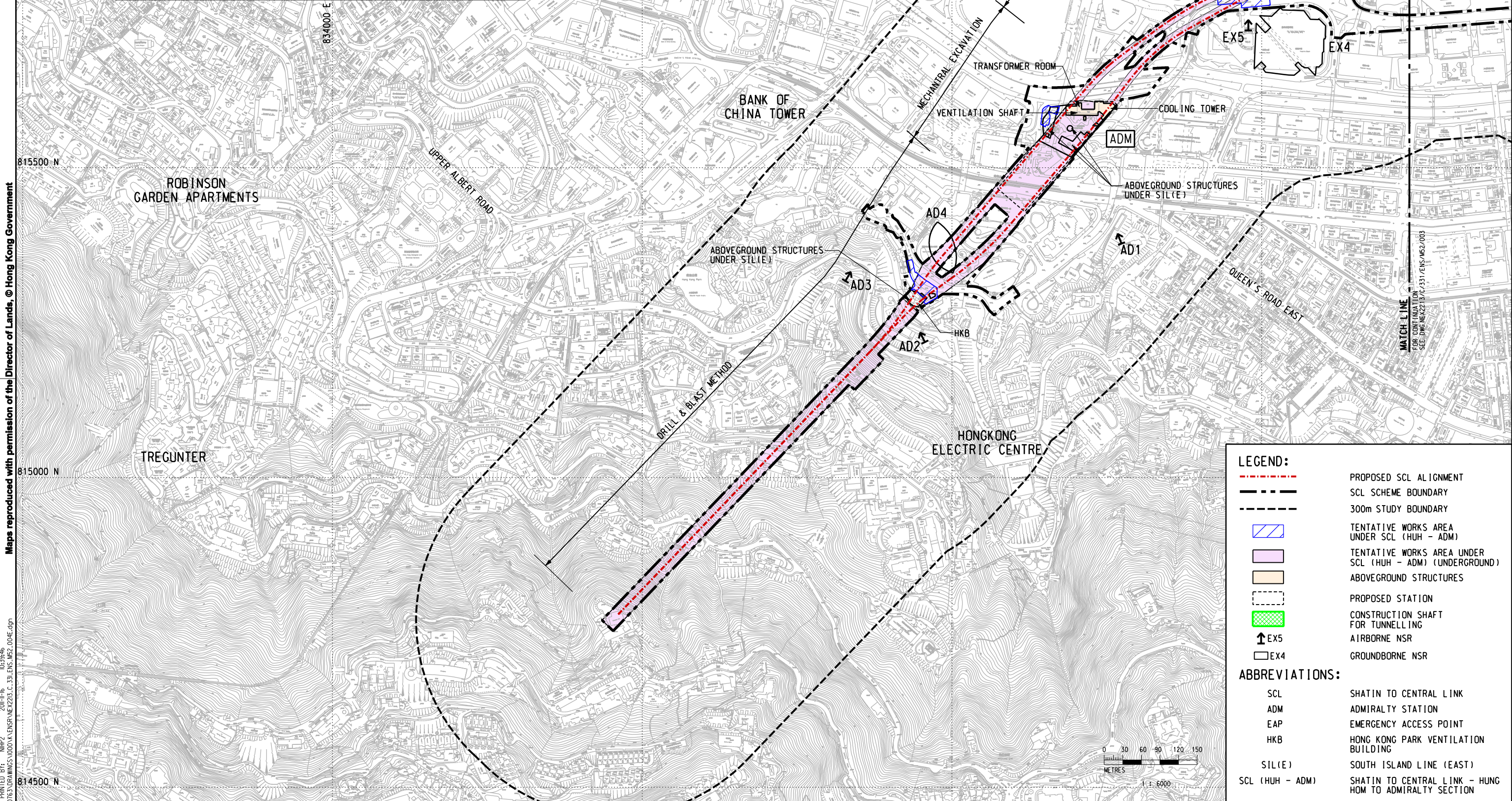
MATCH LINE  
 FOR CONTINUATION  
 SEE Dwg MEX2213/C/331/ENS/M52/004



<table border="1"> <tr><td>DRAWN</td><td>HY</td></tr> <tr><td>DESIGNED</td><td>---</td></tr> <tr><td>CHECKED</td><td>LCR</td></tr> <tr><td>APPROVED</td><td>---</td></tr> <tr><td>DATE</td><td>02/AUG/2011</td></tr> </table>	DRAWN	HY	DESIGNED	---	CHECKED	LCR	APPROVED	---	DATE	02/AUG/2011		<b>SHATIN TO CENTRAL LINK</b> 	<b>TITLE</b> NEX/2213 EIA STUDY FOR SCL (HUH - ADM) LOCATIONS OF REPRESENTATIVE NOISE SENSITIVE RECEIVERS FOR CONSTRUCTION PHASE										
DRAWN	HY																						
DESIGNED	---																						
CHECKED	LCR																						
APPROVED	---																						
DATE	02/AUG/2011																						
<table border="1"> <tr><th>REV</th><th>DESCRIPTION</th><th>BY</th><th>DATE</th><th>APPROVED</th><th>REV</th><th>DESCRIPTION</th><th>BY</th><th>DATE</th><th>APPROVED</th></tr> <tr><td> </td><td> </td><td> </td><td> </td><td> </td><td> </td><td> </td><td> </td><td> </td><td> </td></tr> </table>	REV	DESCRIPTION	BY	DATE	APPROVED	REV	DESCRIPTION	BY	DATE	APPROVED											ORIGINATOR <b>AECOM</b>	SCALE 1 : 6000 (A3)	FIGURE NO. NEX2213/C/331/ENS/M52/003
REV	DESCRIPTION	BY	DATE	APPROVED	REV	DESCRIPTION	BY	DATE	APPROVED														
DO NOT SCALE DRAWINGS. ALL DIMENSIONS SHALL BE VERIFIED ON SITE. © MTR CORPORATION LIMITED 2008. COPYRIGHT IN RESPECT OF THIS DRAWING / DOCUMENT IS OWNED BY THE MTR CORPORATION LIMITED OF HONG KONG. NO REPRODUCTION OF THE DRAWING / DOCUMENT OR ANY PART BY WHATEVER MEANS IS PERMITTED WITHOUT THE PRIOR WRITTEN CONSENT OF THE MTR CORPORATION LIMITED.		CADD REF. NEX2213_C_331_ENS_M52_003C.dgn	REV. C																				



REPRESENTATIVE NOISE SENSITIVE RECEIVER	CONSTRUCTION PHASE	
	ABN - CONSTRUCTION	GBN - CONSTRUCTION
EX3 GRAND HYATT HOTEL		Y
EX4 THE HONG KONG ACADEMY FOR PERFORMING ARTS		Y
EX5 THE HONG KONG ACADEMY FOR PERFORMING ARTS (OPEN ARENA)	Y	
AD1 CHING YI TO BARRACKS PAGET HOUSE	Y	
AD2 REGENT ON THE PARK	Y	
AD3 JOCKEY CLUB NEW LIFE HOSTEL	Y	
AD4 ISLAND SHANGRI-LA HOTEL		Y



**LEGEND:**

- - - PROPOSED SCL ALIGNMENT
- SCL SCHEME BOUNDARY
- 300m STUDY BOUNDARY
- TENTATIVE WORKS AREA UNDER SCL (HUH - ADM)
- TENTATIVE WORKS AREA UNDER SCL (HUH - ADM) (UNDERGROUND)
- ABOVEGROUND STRUCTURES
- PROPOSED STATION
- CONSTRUCTION SHAFT FOR TUNNELLING
- ↑ EX5 AIRBORNE NSR
- EX4 GROUNDBORNE NSR

**ABBREVIATIONS:**

- SCL SHATIN TO CENTRAL LINK
- ADM ADMIRALTY STATION
- EAP EMERGENCY ACCESS POINT
- HKB HONG KONG PARK VENTILATION BUILDING
- SIL(E) SOUTH ISLAND LINE (EAST)
- SCL (HUH - ADM) SHATIN TO CENTRAL LINK - HUNG HOM TO ADMIRALTY SECTION

REV	DESCRIPTION	BY	DATE	APPROVED	REV	DESCRIPTION	BY	DATE	APPROVED

DRAWN: YJP DESIGNED: --- CHECKED: LCR APPROVED: --- DATE: 04/NOV/2011	
DO NOT SCALE DRAWINGS. ALL DIMENSIONS SHALL BE VERIFIED ON SITE. © MTR CORPORATION LIMITED 2008. COPYRIGHT IN RESPECT OF THIS DRAWING / DOCUMENT IS OWNED BY THE MTR CORPORATION LIMITED OF HONG KONG. NO REPRODUCTION OF THE DRAWING / DOCUMENT OR ANY PART BY WHATEVER MEANS IS PERMITTED WITHOUT THE PRIOR WRITTEN CONSENT OF THE MTR CORPORATION LIMITED.	ORIGINATOR: AECOM CADD REF: NEX2213_C_331_ENS_M52_004E.dgn

TITLE: NEX/2213  
EIA STUDY FOR SCL (HUH - ADM)  
LOCATIONS OF REPRESENTATIVE NOISE SENSITIVE RECEIVERS FOR CONSTRUCTION PHASE

SCALE: 1 : 6000 (A3)    FIGURE NO.: NEX2213/C/331/ENS/M52/004    REV: E

Maps reproduced with permission of the Director of Lands, © Hong Kong Government

PLOT DRW: R:\us\mshet\NTR\PI\DRIVER\WINDOWS\33 COL\016.dgn    ID: 3946  
 MODELNAME: M52\_004E.dgn    PRINTED BY: M52\_004E.dgn    DATE: 2011-11-04  
 FILENAME: M52\_004E.dgn    DRAWING NO: NEX2213/C\_331/ENS\_M52\_004E.dgn