

REPRESENTATIVE NOISE SENSITIVE RECEIVER

OPERATION PHASE

HH9b HARBOURFRONT HORIZON

GBN - RAIL

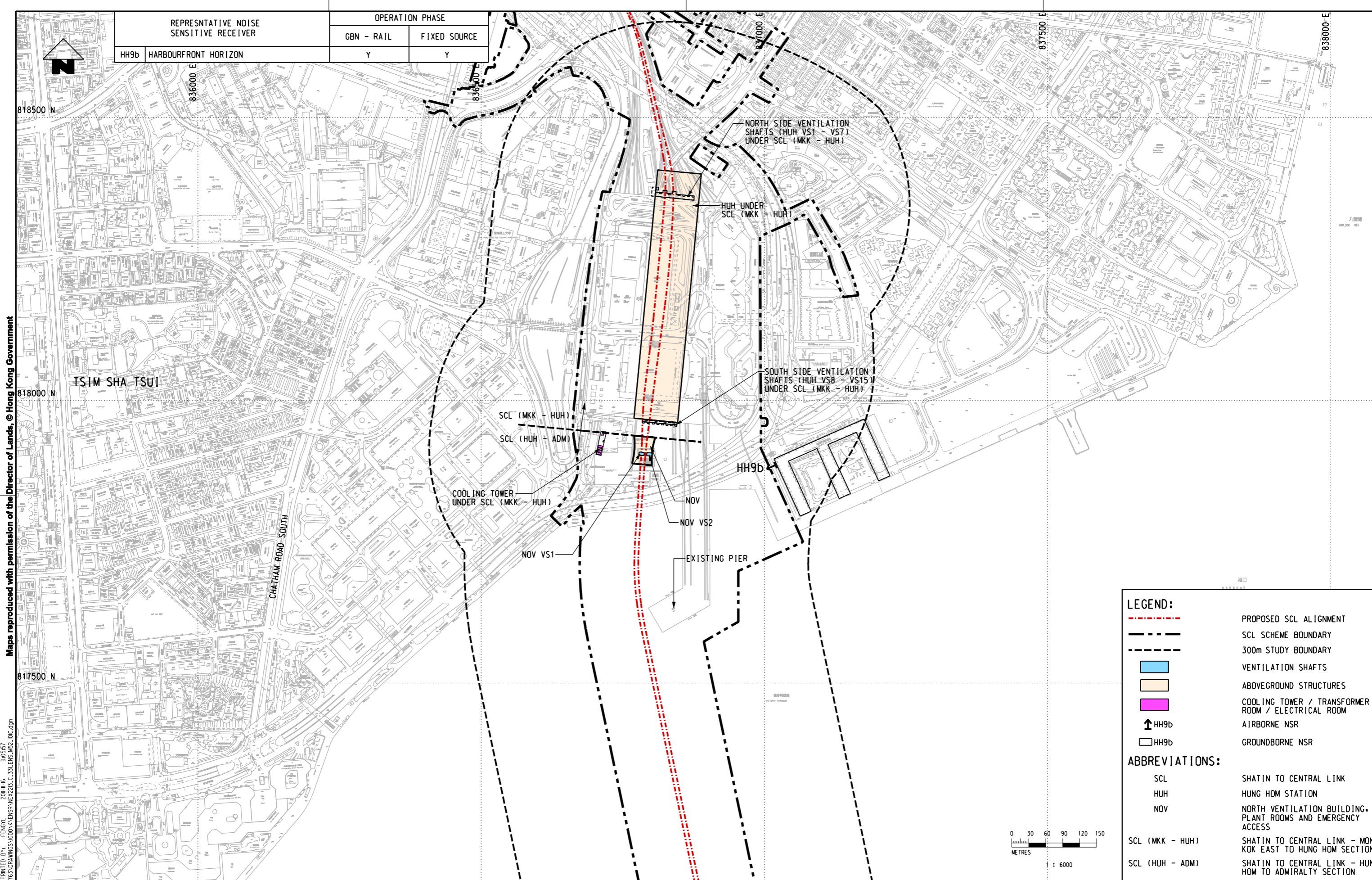
FIXED SOURCE

Y

Y

Maps reproduced with permission of the Director of Lands, © Hong Kong Government

PLOT DRW: F:\us\mset\NTR\PL\DRIVER\WINDOWS\33\COLOUR.dwg
 MODELNAME: M52101C.dgn
 FILENAME: M52101C.dgn
 90567
 2011-11-16
 PRINTED BY: FENCIL
 04/11/2010

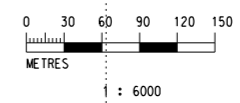


LEGEND:

- - - - - PROPOSED SCL ALIGNMENT
- SCL SCHEME BOUNDARY
- 300m STUDY BOUNDARY
- VENTILATION SHAFTS
- ABOVEGROUND STRUCTURES
- COOLING TOWER / TRANSFORMER ROOM / ELECTRICAL ROOM
- ↑ HH9b AIRBORNE NSR
- HH9b GROUNDBORNE NSR

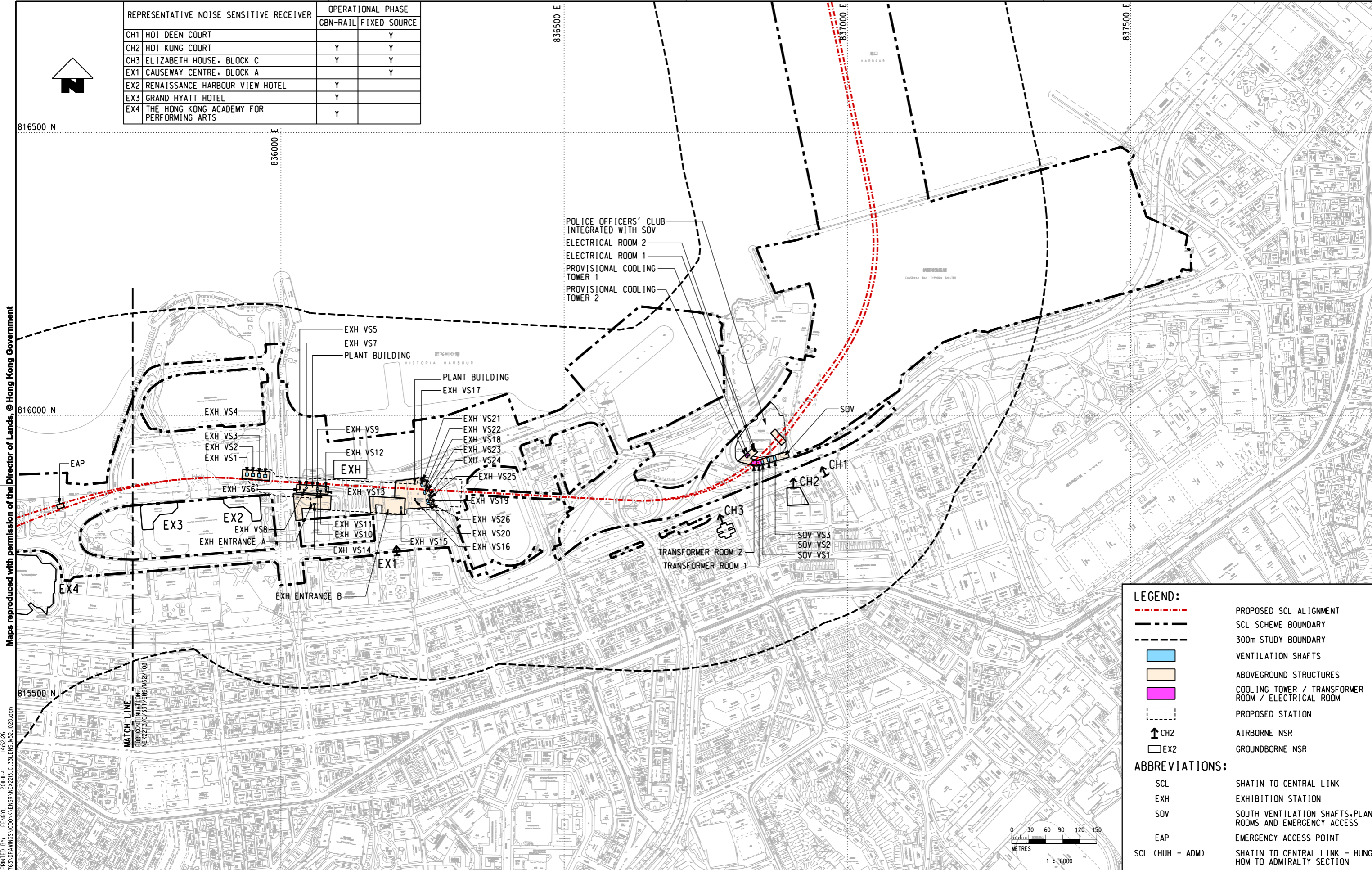
ABBREVIATIONS:

- SCL SHATIN TO CENTRAL LINK
- HUH HUNG HOM STATION
- NOV NORTH VENTILATION BUILDING, PLANT ROOMS AND EMERGENCY ACCESS
- SCL (MKK - HUH) SHATIN TO CENTRAL LINK - MONG KOK EAST TO HUNG HOM SECTION
- SCL (HUH - ADM) SHATIN TO CENTRAL LINK - HUNG HOM TO ADMIRALTY SECTION



	DRAWN	WK		SHATIN TO CENTRAL LINK 	TITLE	NEX/2213 EIA STUDY FOR SCL (HUH - ADM) LOCATIONS OF REPRESENTATIVE NOISE SENSITIVE RECEIVERS FOR OPERATION PHASE	
	DESIGNED	---					
	CHECKED	LCR					
	APPROVED	---					
	DATE	04/NOV/2010					
	DO NOT SCALE DRAWINGS. ALL DIMENSIONS SHALL BE VERIFIED ON SITE. © MTR CORPORATION LIMITED 2008. COPYRIGHT IN RESPECT OF THIS DRAWING / DOCUMENT IS OWNED BY THE MTR CORPORATION LIMITED OF HONG KONG. NO REPRODUCTION OF THE DRAWING / DOCUMENT OR ANY PART BY WHATEVER MEANS IS PERMITTED WITHOUT THE PRIOR WRITTEN CONSENT OF THE MTR CORPORATION LIMITED.		ORIGINATOR		SCALE	FIGURE NO.	
			CADD REF.	NEX2213_C_331_ENS_M52_101C.dgn	1 : 6000 (A3)	NEX2213/C/331/ENS/M52/101	REV. C

REPRESENTATIVE NOISE SENSITIVE RECEIVER	OPERATIONAL PHASE	
	GBN-RAIL	FIXED SOURCE
CH1 HOI DEEN COURT		Y
CH2 HOI KUNG COURT	Y	Y
CH3 ELIZABETH HOUSE, BLOCK C	Y	Y
EX1 CAUSEWAY CENTRE, BLOCK A		Y
EX2 RENAISSANCE HARBOUR VIEW HOTEL	Y	
EX3 GRAND HYATT HOTEL	Y	
EX4 THE HONG KONG ACADEMY FOR PERFORMING ARTS	Y	



LEGEND:

- - - PROPOSED SCL ALIGNMENT
- SCL SCHEME BOUNDARY
- 300m STUDY BOUNDARY
- VENTILATION SHAFTS
- ABOVEGROUND STRUCTURES
- COOLING TOWER / TRANSFORMER ROOM / ELECTRICAL ROOM
- PROPOSED STATION
- AIRBORNE NSR
- GROUNDBORNE NSR

ABBREVIATIONS:

- SCL SHATIN TO CENTRAL LINK
- EXH EXHIBITION STATION
- SOV SOUTH VENTILATION SHAFTS, PLANT ROOMS AND EMERGENCY ACCESS
- EAP EMERGENCY ACCESS POINT
- SCL (HUH - ADM) SHATIN TO CENTRAL LINK - HUNG HOM TO ADMIRALTY SECTION

Maps reproduced with permission of the Director of Lands, © Hong Kong Government

PLOT DRY: F:\us\mset\mtr\p\drawing\windows\33_col_016_r.dwg
 MODEL NAME: NEX2213/C/331/ENS/M52/102.dgn
 FILE NAME: NEX2213/C/331/ENS/M52/102.dgn

DRAWN	HY
DESIGNED	---
CHECKED	LCR
APPROVED	---
DATE	04/NOV/2011



SHATIN TO CENTRAL LINK

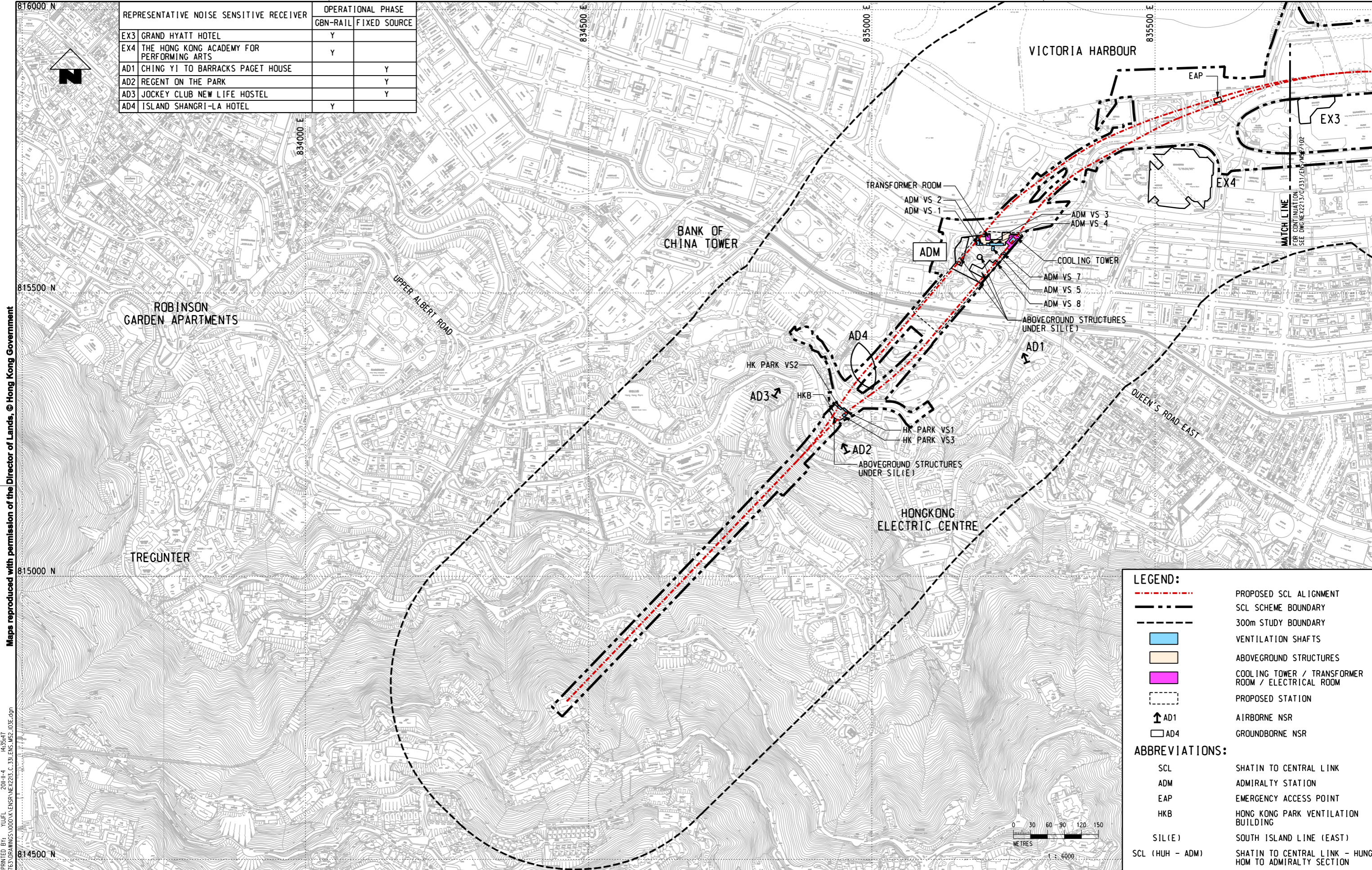


TITLE		NEX/2213	
EIA STUDY FOR SCL (HUH - ADM)		LOCATIONS OF REPRESENTATIVE NOISE SENSITIVE RECEIVERS FOR OPERATION PHASE	
SCALE	FIGURE NO.	REV.	
1 : 6000 (A3)	NEX2213/C/331/ENS/M52/102	D	

REV	DESCRIPTION	BY	DATE	APPROVED	REV	DESCRIPTION	BY	DATE	APPROVED

CADD REF. NEX2213.C_331.ENS_M52_102.dgn

REPRESENTATIVE NOISE SENSITIVE RECEIVER	OPERATIONAL PHASE	
	GBN-RAIL	FIXED SOURCE
EX3 GRAND HYATT HOTEL	Y	
EX4 THE HONG KONG ACADEMY FOR PERFORMING ARTS	Y	
AD1 CHING YI TO BARRACKS PAGET HOUSE		Y
AD2 REGENT ON THE PARK		Y
AD3 JOCKEY CLUB NEW LIFE HOSTEL		Y
AD4 ISLAND SHANGRI-LA HOTEL	Y	

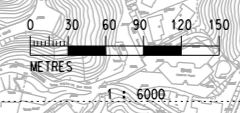


LEGEND:

- - - - - PROPOSED SCL ALIGNMENT
- SCL SCHEME BOUNDARY
- 300m STUDY BOUNDARY
- VENTILATION SHAFTS
- ABOVEGROUND STRUCTURES
- COOLING TOWER / TRANSFORMER ROOM / ELECTRICAL ROOM
- PROPOSED STATION
- ↑ AD1 AIRBORNE NSR
- AD4 GROUNDBORNE NSR

ABBREVIATIONS:

- SCL SHATIN TO CENTRAL LINK
- ADM ADMIRALTY STATION
- EAP EMERGENCY ACCESS POINT
- HKB HONG KONG PARK VENTILATION BUILDING
- SIL(E) SOUTH ISLAND LINE (EAST)
- SCL (HUH - ADM) SHATIN TO CENTRAL LINK - HUNG HOM TO ADMIRALTY SECTION



PLOT DRW: R:\nstmsb\1\MTR\PI\DRIVER\WINDOWS\A3 COLOR.dwg
 MODELNAME: M52_103E.dgn
 FILENAME: M52_103E.dgn
 DATE: 2011-11-04 14:35:47
 PRINTED BY: YJPL
 M52_103E.dgn

DRAWN	YJP
DESIGNED	---
CHECKED	LCR
APPROVED	---
DATE	04/NOV/2011

ORIGINATOR
MTR

SHATIN TO CENTRAL LINK
AECOM

TITLE		NEX/2213	
EIA STUDY FOR SCL (HUH - ADM)		LOCATIONS OF REPRESENTATIVE NOISE SENSITIVE RECEIVERS FOR OPERATION PHASE	
SCALE	FIGURE NO.	SCALE	FIGURE NO.
1 : 6000 (A3)	NEX2213/C/331/ENS/M52/103	1 : 6000	NEX2213/C/331/ENS/M52/103
REV.		REV.	E

REV	DESCRIPTION	BY	DATE	APPROVED	REV	DESCRIPTION	BY	DATE	APPROVED

CADD REF. NEX2213.C_331.ENS_M52_103E.dgn