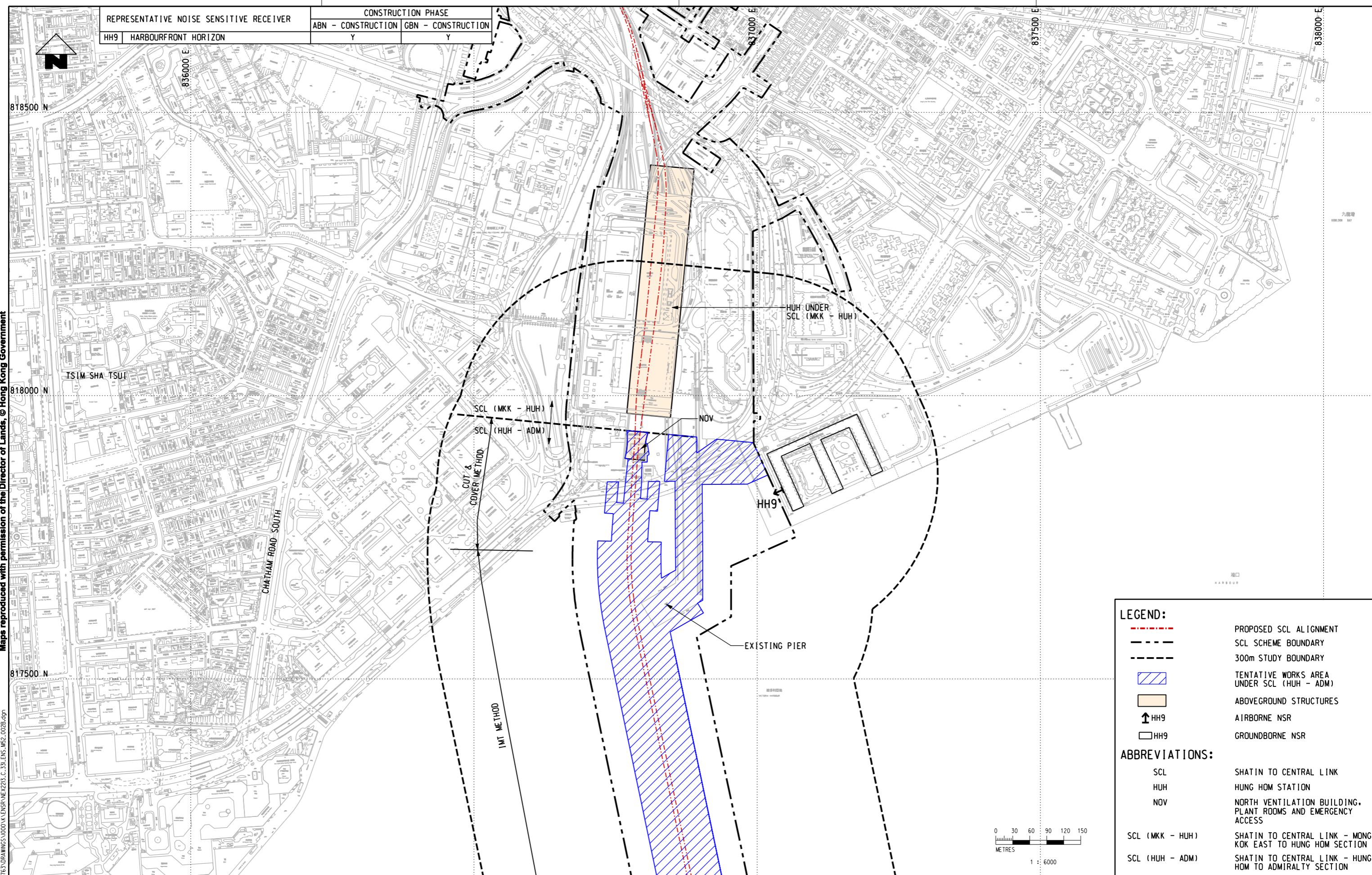


Maps reproduced with permission of the Director of Lands, © Hong Kong Government

PLOT DRW: R:\us\mset\NTR\PI\DRIVER\WINDOWS\33 COL\016.dgn
 MODELNAME: M520213_C_331_ENS_M52_002B.dgn
 FILENAME: M520213_C_331_ENS_M52_002B.dgn
 PRN: 4324
 DATE: 2011-10-24

REPRESENTATIVE NOISE SENSITIVE RECEIVER	CONSTRUCTION PHASE	
	ABN - CONSTRUCTION	GBN - CONSTRUCTION
HH9 HARBOURFRONT HORIZON	Y	Y

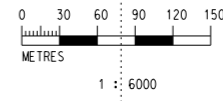


LEGEND:

- - - - PROPOSED SCL ALIGNMENT
- SCL SCHEME BOUNDARY
- 300m STUDY BOUNDARY
- TENTATIVE WORKS AREA UNDER SCL (HUH - ADM)
- ABOVEGROUND STRUCTURES
- ↑ HH9 AIRBORNE NSR
- HH9 GROUND BORNE NSR

ABBREVIATIONS:

- SCL SHATIN TO CENTRAL LINK
- HUH HUNG HOM STATION
- NOV NORTH VENTILATION BUILDING, PLANT ROOMS AND EMERGENCY ACCESS
- SCL (MKK - HUH) SHATIN TO CENTRAL LINK - MONG KOK EAST TO HUNG HOM SECTION
- SCL (HUH - ADM) SHATIN TO CENTRAL LINK - HUNG HOM TO ADMIRALTY SECTION



REV	DESCRIPTION	BY	DATE	APPROVED	REV	DESCRIPTION	BY	DATE	APPROVED

DRAWN	WK	 SHATIN TO CENTRAL LINK
DESIGNED	---	
CHECKED	LCR	
APPROVED	---	
DATE	22/OCT/2010	
<small>DO NOT SCALE DRAWINGS. ALL DIMENSIONS SHALL BE VERIFIED ON SITE. © MTR CORPORATION LIMITED 2008. COPYRIGHT IN RESPECT OF THIS DRAWING / DOCUMENT IS OWNED BY THE MTR CORPORATION LIMITED OF HONG KONG. NO REPRODUCTION OF THE DRAWING / DOCUMENT OR ANY PART BY WHATEVER MEANS IS PERMITTED WITHOUT THE PRIOR WRITTEN CONSENT OF THE MTR CORPORATION LIMITED.</small>		ORIGINATOR
CADD REF.		NEX2213_C_331_ENS_M52_002B.dgn

TITLE	
NEX/2213 EIA STUDY FOR SCL (HUH - ADM) LOCATION OF REPRESENTATIVE NOISE SENSITIVE RECEIVERS FOR CONSTRUCTION PHASE	
SCALE	FIGURE NO.
1 : 6000 (A3)	NEX2213/C/331/ENS/M52/002
REV.	B