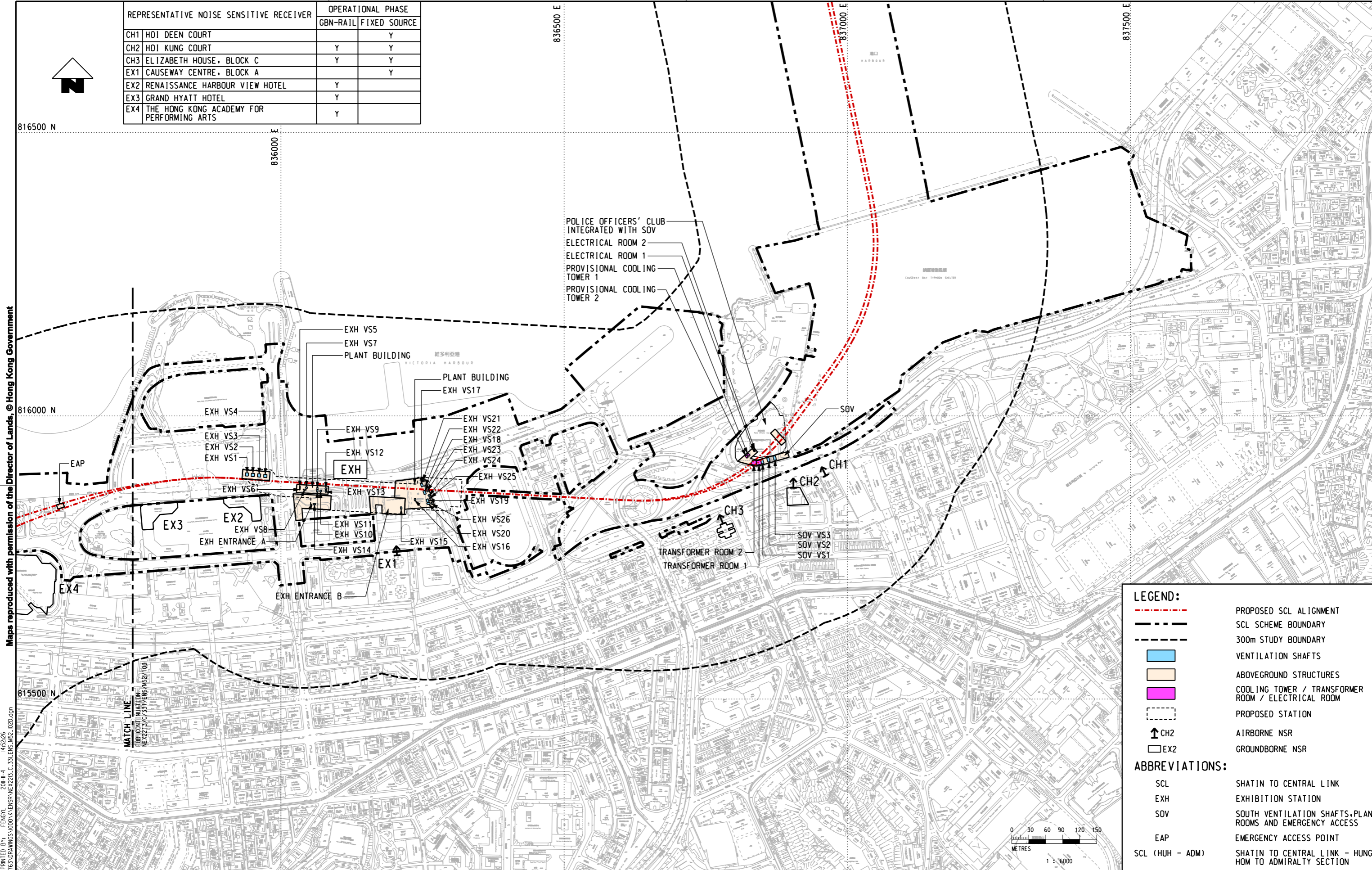


REPRESENTATIVE NOISE SENSITIVE RECEIVER	OPERATIONAL PHASE	
	GBN-RAIL	FIXED SOURCE
CH1 HOI DEEN COURT		Y
CH2 HOI KUNG COURT	Y	Y
CH3 ELIZABETH HOUSE, BLOCK C	Y	Y
EX1 CAUSEWAY CENTRE, BLOCK A		Y
EX2 RENAISSANCE HARBOUR VIEW HOTEL	Y	
EX3 GRAND HYATT HOTEL	Y	
EX4 THE HONG KONG ACADEMY FOR PERFORMING ARTS	Y	

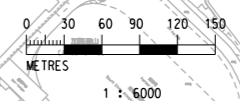


LEGEND:

- - - PROPOSED SCL ALIGNMENT
- SCL SCHEME BOUNDARY
- 300m STUDY BOUNDARY
- VENTILATION SHAFTS
- ABOVEGROUND STRUCTURES
- COOLING TOWER / TRANSFORMER ROOM / ELECTRICAL ROOM
- PROPOSED STATION
- AIRBORNE NSR
- GROUND BORNE NSR

ABBREVIATIONS:

- SCL SHATIN TO CENTRAL LINK
- EXH EXHIBITION STATION
- SOV SOUTH VENTILATION SHAFTS, PLANT ROOMS AND EMERGENCY ACCESS
- EAP EMERGENCY ACCESS POINT
- SCL (HUH - ADM) SHATIN TO CENTRAL LINK - HUNG HOM TO ADMIRALTY SECTION



Maps reproduced with permission of the Director of Lands, © Hong Kong Government

PLOT DRY: F:\usr\msh\mtr\p\d\DRIVER\WINDOWS\33 COL\016.dgn 14:52:26
 MODEL NAME: NEX2213/C/331/ENS/M52/102.dgn
 FILE NAME: NEX2213/C/331/ENS/M52/102.dgn

<table border="0"> <tr> <td>DRAWN</td><td>HY</td><td rowspan="4" style="text-align: center;"></td><td rowspan="4" style="text-align: center;">SHATIN TO CENTRAL LINK</td></tr> <tr> <td>DESIGNED</td><td>---</td></tr> <tr> <td>CHECKED</td><td>LCR</td></tr> <tr> <td>APPROVED</td><td>---</td></tr> <tr> <td>DATE</td><td>04/NOV/2011</td><td>ORIGINATOR</td><td style="text-align: center;"></td></tr> <tr> <td colspan="4" style="font-size: small;">DO NOT SCALE DRAWINGS. ALL DIMENSIONS SHALL BE VERIFIED ON SITE. © MTR CORPORATION LIMITED 2008 COPYRIGHT IN RESPECT OF THIS DRAWING / DOCUMENT IS OWNED BY THE MTR CORPORATION LIMITED OF HONG KONG. NO REPRODUCTION OF THE DRAWING / DOCUMENT OR ANY PART BY WHATEVER MEANS IS PERMITTED WITHOUT THE PRIOR WRITTEN CONSENT OF THE MTR CORPORATION LIMITED.</td></tr> <tr> <td colspan="2">CADD REF. NEX2213.C_331.ENS_M52_102.dgn</td><td colspan="2">TITLE</td></tr> <tr> <td colspan="2"></td><td colspan="2" style="text-align: center;">NEX/2213 EIA STUDY FOR SCL (HUH - ADM) LOCATIONS OF REPRESENTATIVE NOISE SENSITIVE RECEIVERS FOR OPERATION PHASE</td></tr> <tr> <td colspan="2">SCALE 1 : 6000 (A3)</td><td colspan="2">FIGURE NO. NEX2213/C/331/ENS/M52/102</td></tr> <tr> <td colspan="2"></td><td colspan="2" style="text-align: right;">REV. D</td></tr> </table>				DRAWN	HY		SHATIN TO CENTRAL LINK	DESIGNED	---	CHECKED	LCR	APPROVED	---	DATE	04/NOV/2011	ORIGINATOR		DO NOT SCALE DRAWINGS. ALL DIMENSIONS SHALL BE VERIFIED ON SITE. © MTR CORPORATION LIMITED 2008 COPYRIGHT IN RESPECT OF THIS DRAWING / DOCUMENT IS OWNED BY THE MTR CORPORATION LIMITED OF HONG KONG. NO REPRODUCTION OF THE DRAWING / DOCUMENT OR ANY PART BY WHATEVER MEANS IS PERMITTED WITHOUT THE PRIOR WRITTEN CONSENT OF THE MTR CORPORATION LIMITED.				CADD REF. NEX2213.C_331.ENS_M52_102.dgn		TITLE				NEX/2213 EIA STUDY FOR SCL (HUH - ADM) LOCATIONS OF REPRESENTATIVE NOISE SENSITIVE RECEIVERS FOR OPERATION PHASE		SCALE 1 : 6000 (A3)		FIGURE NO. NEX2213/C/331/ENS/M52/102				REV. D	
DRAWN	HY		SHATIN TO CENTRAL LINK																																		
DESIGNED	---																																				
CHECKED	LCR																																				
APPROVED	---																																				
DATE	04/NOV/2011	ORIGINATOR																																			
DO NOT SCALE DRAWINGS. ALL DIMENSIONS SHALL BE VERIFIED ON SITE. © MTR CORPORATION LIMITED 2008 COPYRIGHT IN RESPECT OF THIS DRAWING / DOCUMENT IS OWNED BY THE MTR CORPORATION LIMITED OF HONG KONG. NO REPRODUCTION OF THE DRAWING / DOCUMENT OR ANY PART BY WHATEVER MEANS IS PERMITTED WITHOUT THE PRIOR WRITTEN CONSENT OF THE MTR CORPORATION LIMITED.																																					
CADD REF. NEX2213.C_331.ENS_M52_102.dgn		TITLE																																			
		NEX/2213 EIA STUDY FOR SCL (HUH - ADM) LOCATIONS OF REPRESENTATIVE NOISE SENSITIVE RECEIVERS FOR OPERATION PHASE																																			
SCALE 1 : 6000 (A3)		FIGURE NO. NEX2213/C/331/ENS/M52/102																																			
		REV. D																																			
REV	DESCRIPTION	BY	DATE	APPROVED	REV	DESCRIPTION	BY	DATE	APPROVED																												