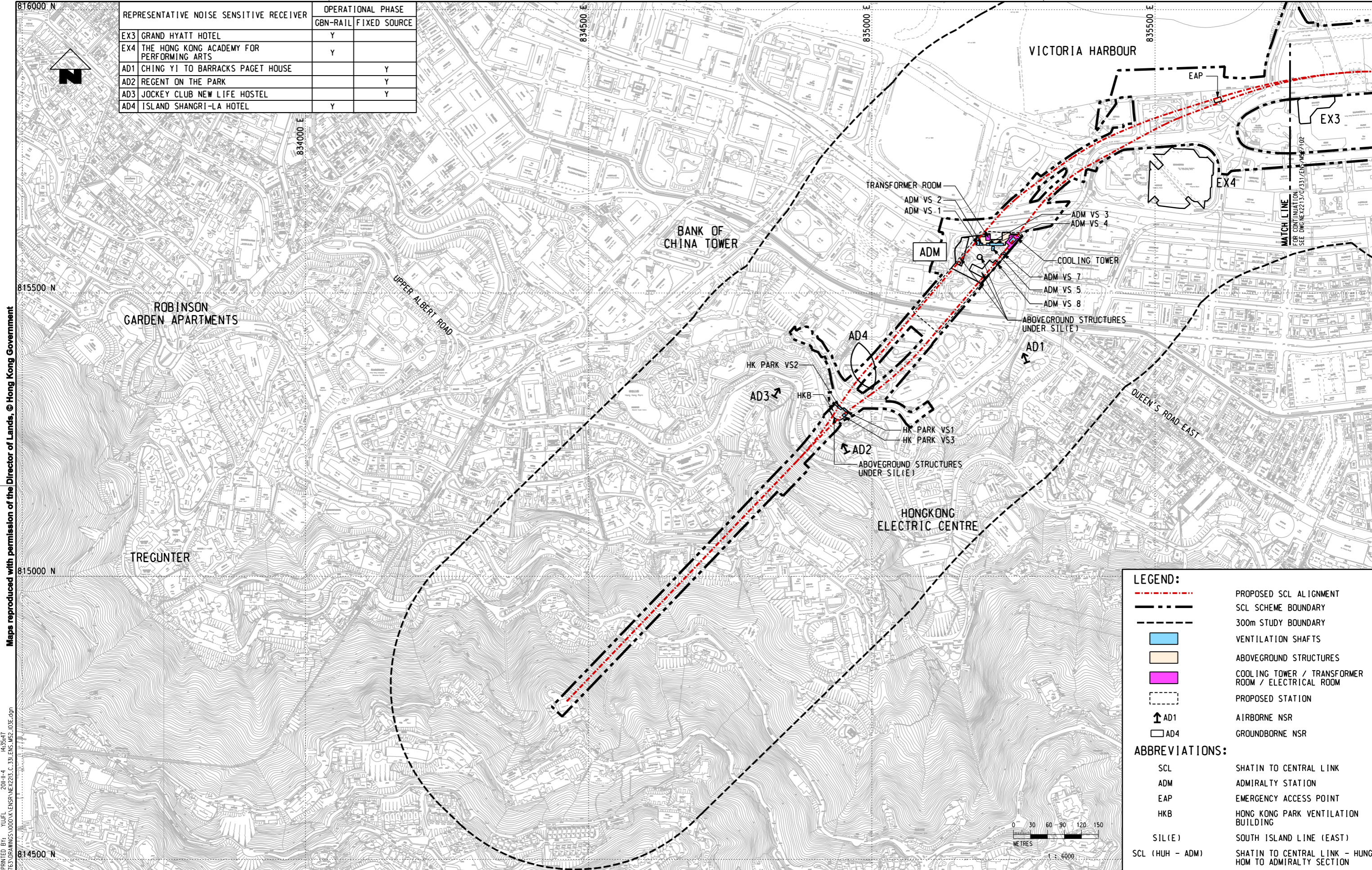


REPRESENTATIVE NOISE SENSITIVE RECEIVER	OPERATIONAL PHASE	
	GBN-RAIL	FIXED SOURCE
EX3 GRAND HYATT HOTEL	Y	
EX4 THE HONG KONG ACADEMY FOR PERFORMING ARTS	Y	
AD1 CHING YI TO BARRACKS PAGET HOUSE		Y
AD2 REGENT ON THE PARK		Y
AD3 JOCKEY CLUB NEW LIFE HOSTEL		Y
AD4 ISLAND SHANGRI-LA HOTEL	Y	



Maps reproduced with permission of the Director of Lands, © Hong Kong Government

PLOT DRY: R:\nstmsb\1\MTR\PI\DRIVER\WINDOWS\33 COL\016.dgn  
 MODELNAME: M:\projects\2011\14\1435547  
 FILENAME: M:\projects\2011\14\1435547\1435547.dgn

DRAWN	YJP
DESIGNED	---
CHECKED	LCR
APPROVED	---
DATE	04/NOV/2011



SHATIN TO CENTRAL LINK



TITLE		NEX/2213	
EIA STUDY FOR SCL (HUH - ADM)		LOCATIONS OF REPRESENTATIVE NOISE SENSITIVE RECEIVERS FOR OPERATION PHASE	
SCALE	FIGURE NO.	SCALE	FIGURE NO.
1 : 6000 (A3)	NEX2213/C/331/ENS/M52/103	1 : 6000 (A3)	NEX2213/C/331/ENS/M52/103
REV.		REV.	E

REV	DESCRIPTION	BY	DATE	APPROVED	REV	DESCRIPTION	BY	DATE	APPROVED

DO NOT SCALE DRAWINGS. ALL DIMENSIONS SHALL BE REPRODUCED ON SITE.  
 © MTR CORPORATION LIMITED 2008. COPYRIGHT IN RESPECT OF THIS DRAWING / DOCUMENT IS OWNED BY THE MTR CORPORATION LIMITED OF HONG KONG. NO REPRODUCTION OF THE DRAWING / DOCUMENT OR ANY PART BY WHATEVER MEANS IS PERMITTED WITHOUT THE PRIOR WRITTEN CONSENT OF THE MTR CORPORATION LIMITED.

CADD REF. NEX2213.C\_331.ENS\_M52\_103E.dgn