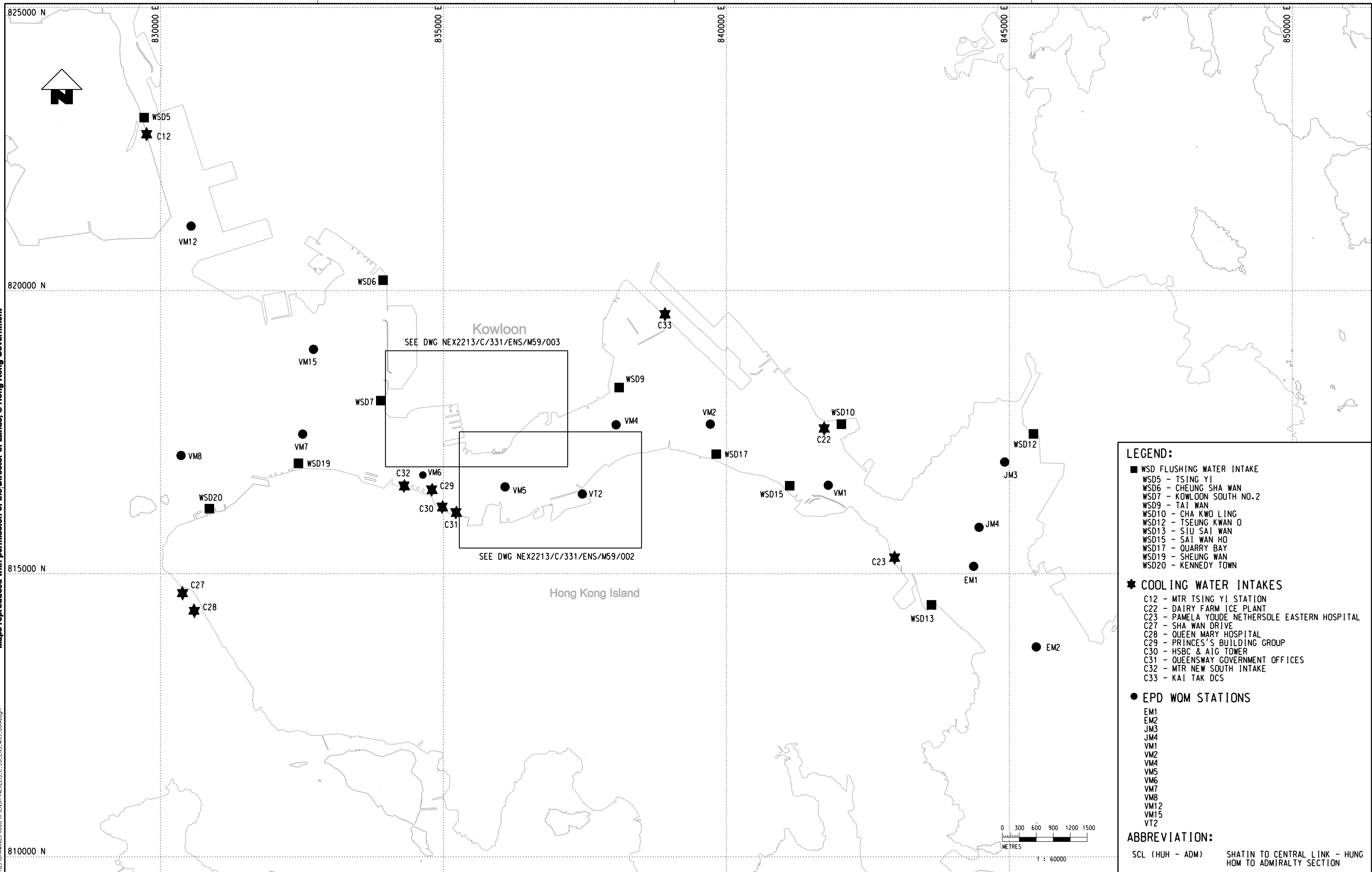


Maps reproduced with permission of the Director of Lands, © Hong Kong Government

Plot DWG: R:\ustms\mtr\p1\otriver\windows\13\colour.dwg  
 Model Name: MTR\Projects\Drawings\000\X\ENS\M59\001A.dgn  
 File Name: MTR\Projects\Drawings\000\X\ENS\M59\001A.dgn



**LEGEND:**

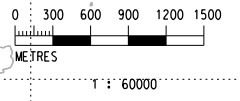
- WSD FLUSHING WATER INTAKE
- WSD5 - TSING YI
- WSD6 - CHEUNG SHA WAN
- WSD7 - KOWLOON SOUTH NO.2
- WSD9 - TAI WAN
- WSD10 - CHA KWO LING
- WSD12 - TSEUNG KWAN O
- WSD13 - SIU SAI WAN
- WSD15 - SAI WAN HO
- WSD17 - QUARRY BAY
- WSD19 - SHEUNG WAN
- WSD20 - KENNEDY TOWN

- ★ COOLING WATER INTAKES
- C12 - MTR TSING YI STATION
- C22 - DAIRY FARM ICE PLANT
- C23 - PAMELA YOUDE NETHERSOLE EASTERN HOSPITAL
- C27 - SHA WAN DRIVE
- C28 - QUEEN MARY HOSPITAL
- C29 - PRINCES' S BUILDING GROUP
- C30 - HSBC & AIG TOWER
- C31 - QUEENSWAY GOVERNMENT OFFICES
- C32 - MTR NEW SOUTH INTAKE
- C33 - KAI TAK DCS

- EPD WOM STATIONS
- EM1
- EM2
- JM3
- JM4
- VM1
- VM2
- VM4
- VM5
- VM6
- VM7
- VM8
- VM12
- VM15
- VT2

**ABBREVIATION:**

SCL (HUH - ADM) SHATIN TO CENTRAL LINK - HUNG  
 HOM TO ADMIRALTY SECTION



REV	DESCRIPTION	BY	DATE	APPROVED	REV	DESCRIPTION	BY	DATE	APPROVED

DRAWN	LX
DESIGNED	---
CHECKED	LCR
APPROVED	---
DATE	19/NOV/2010

**MTR**

SHATIN TO CENTRAL LINK

**AECOM**

ORIGINATOR

CADD REF. NEX2213\_C\_331\_ENS\_M59\_001A.dgn

TITLE	NEX/2213	
	EIA STUDY FOR SCL (HUH - ADM)	
	LOCATIONS OF WATER QUALITY SENSITIVE RECEIVERS	
	SHEET 1 OF 3	
SCALE	1 : 60000 (A3)	REV. A
FIGURE NO.	NEX2213/C/331/ENS/M59/001	

DO NOT SCALE DRAWINGS. ALL DIMENSIONS SHALL BE VERIFIED ON SITE.  
 © MTR CORPORATION LIMITED 2008. COPYRIGHT IN RESPECT OF THIS DRAWING / DOCUMENT IS OWNED BY THE MTR CORPORATION LIMITED OF HONG KONG. NO REPRODUCTION OF THE DRAWING / DOCUMENT OR ANY PART BY WHATEVER MEANS IS PERMITTED WITHOUT THE PRIOR WRITTEN CONSENT OF THE MTR CORPORATION LIMITED.