

Appendix 3.5 Summary of Emission Inventory for PATH Modelling

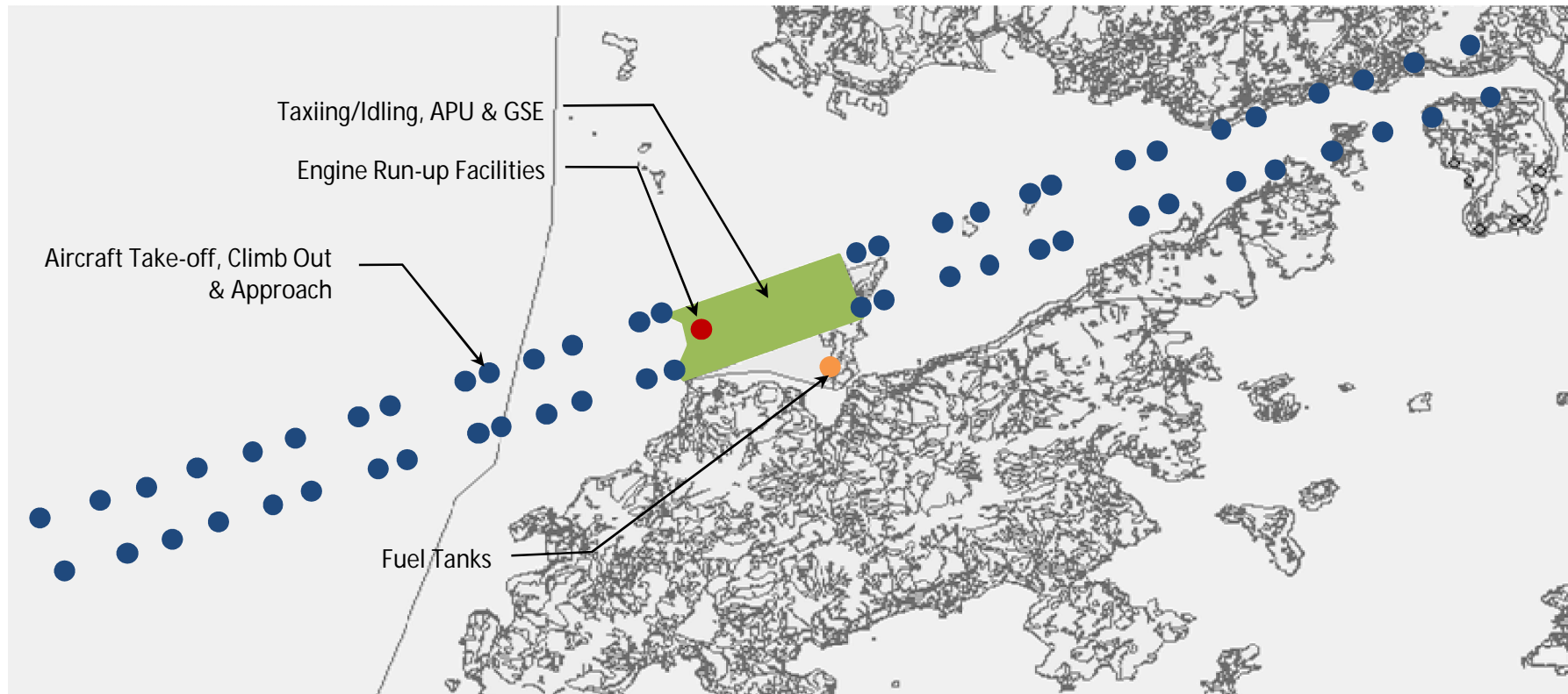
Emission Group	Emission Year	Emission Inventory (in tonnes/Yr)			
		SO ₂	NO _x	PM ₁₀	VOC
The IWMF	2016 (the IWMF at the TTAL site) 2018 (the IWMF at the artificial island near SKC)	1,447	1,447	217	145
Power Plant, Industry, Transportation, VOC Containing Product and others in PRDEZ	2015	401,487	452,312	206,800	187,412
Aircraft Take-off, Climb Out, Approach, Idling/Taxiing	2020	446	8,665	100	1,140
Ground Support Equipment	2020	70	189	52	18
Auxiliary Power Units	2020	24	156	0	20
Engine Run-up Facilities	2020	1	31	0	2
Fuel Tanks	2020	0	0	0	8
HKSAR Power Plant	2015	12,482	27,552	831	282
HK Industrial (see Note 1)	2015	1,585	7,201	904	4,810
HK Marine	2030	8,037	32,078	1,158	803
HK Roads (see Note 2)	2015	216	8,512	595	2,580
Petrol evaporation	2015	0	0	0	1,762
Tire Wear	2015	0	0	719	0
Off road mobile sources and machinery	2015	4	2,852	298	410
VOC Product	2030	0	0	0	21,254
Commercial and Domestic Fuel Consumption	2030	7	2,214	127	99
Others	2030	0	26	36	387

Note 1: Emission from STF, Green Island Cement, Existing WENT Landfill, WENT Landfill Extension, EcoPark and Shiu Wing Steel Mill have been included in the emission inventory.

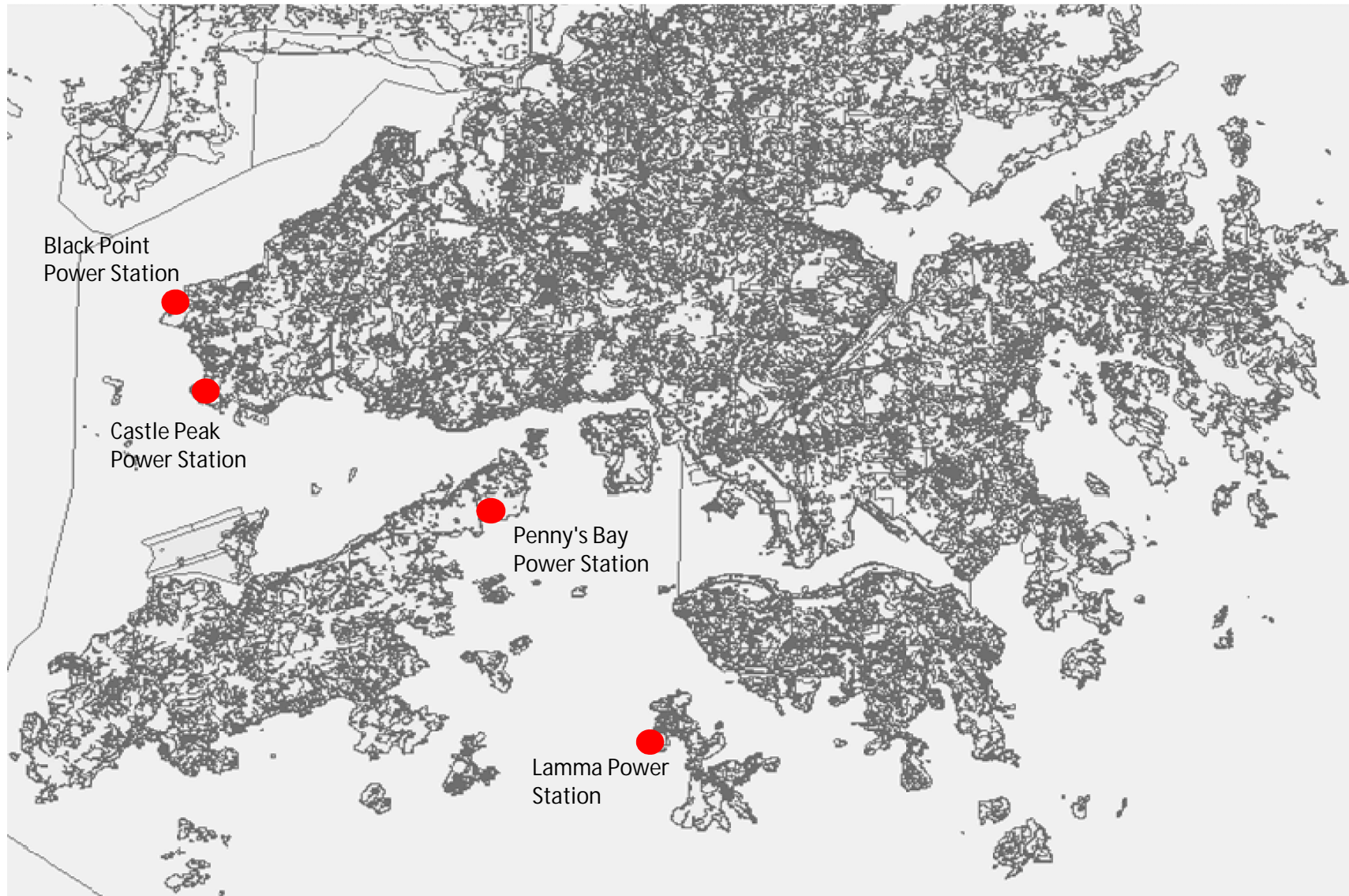
Note 2: Emission from TMWB has been included in the emission inventory.

Note 3: Total 50,962 tonnes per year of CO emission within HKSAR (including the IWMF) have been adopted in PATH model.

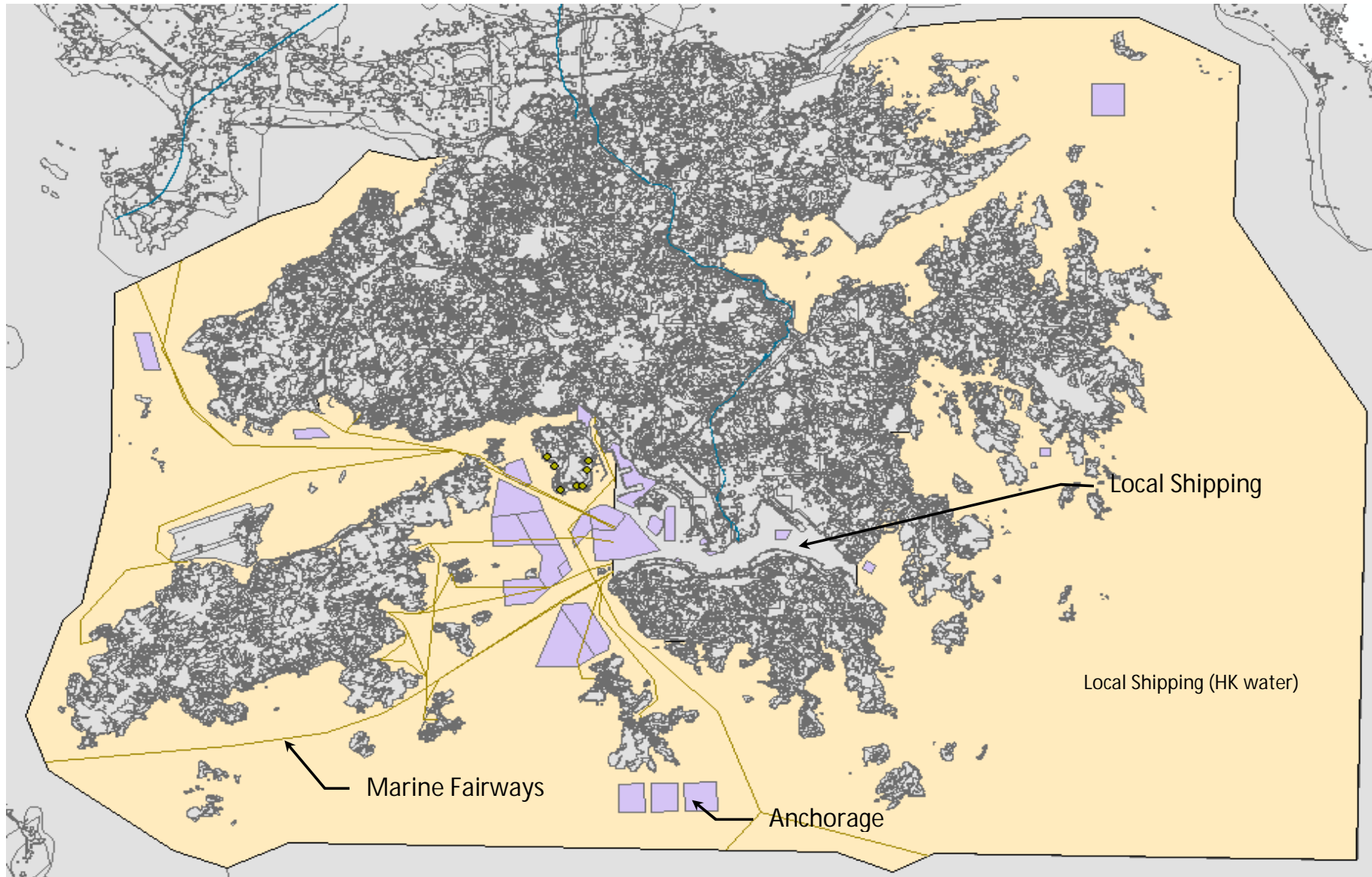
Spatial distributions for emissions from Hong Kong International Airport



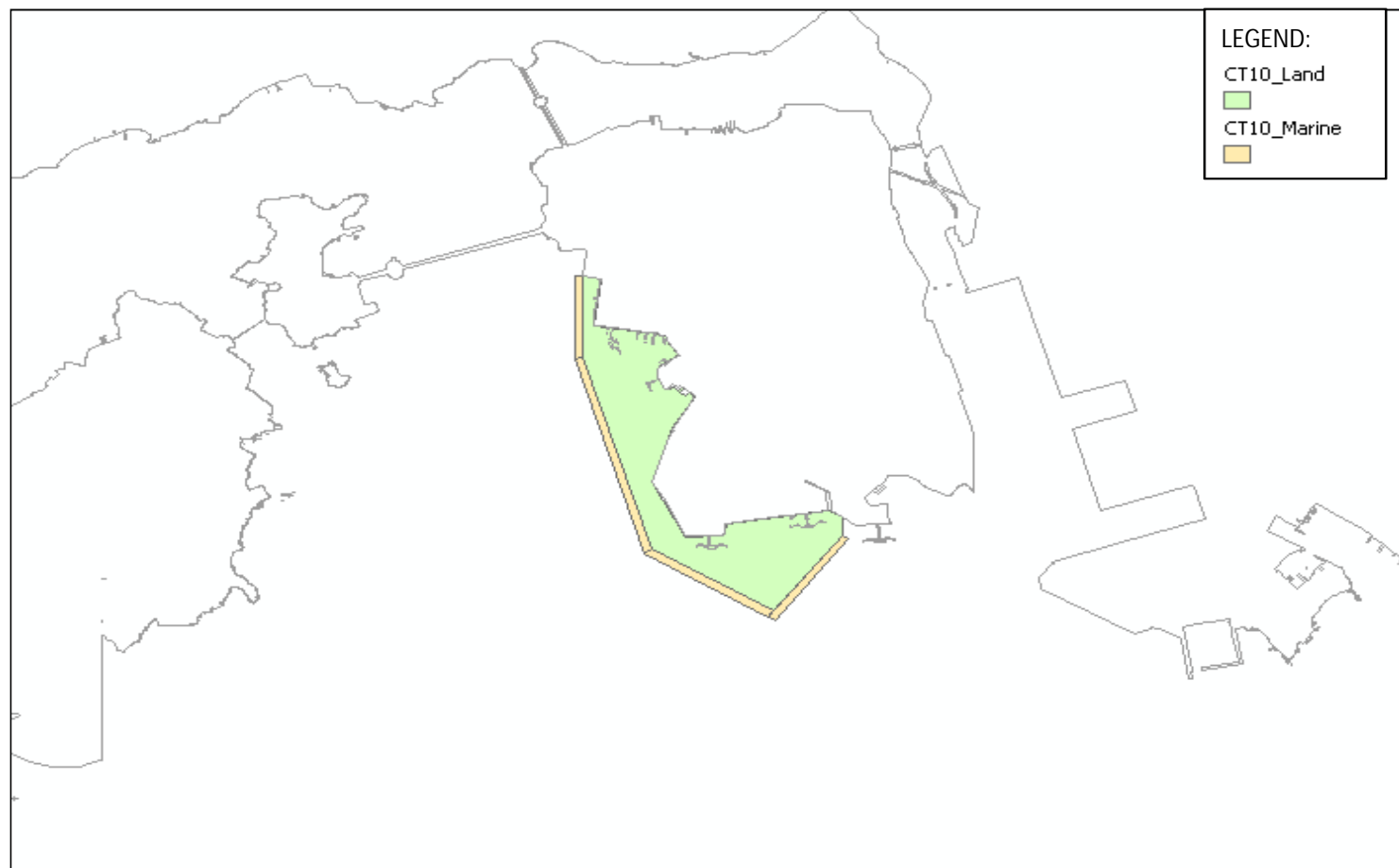
Spatial distributions for emissions from Power Stations within HKSAR



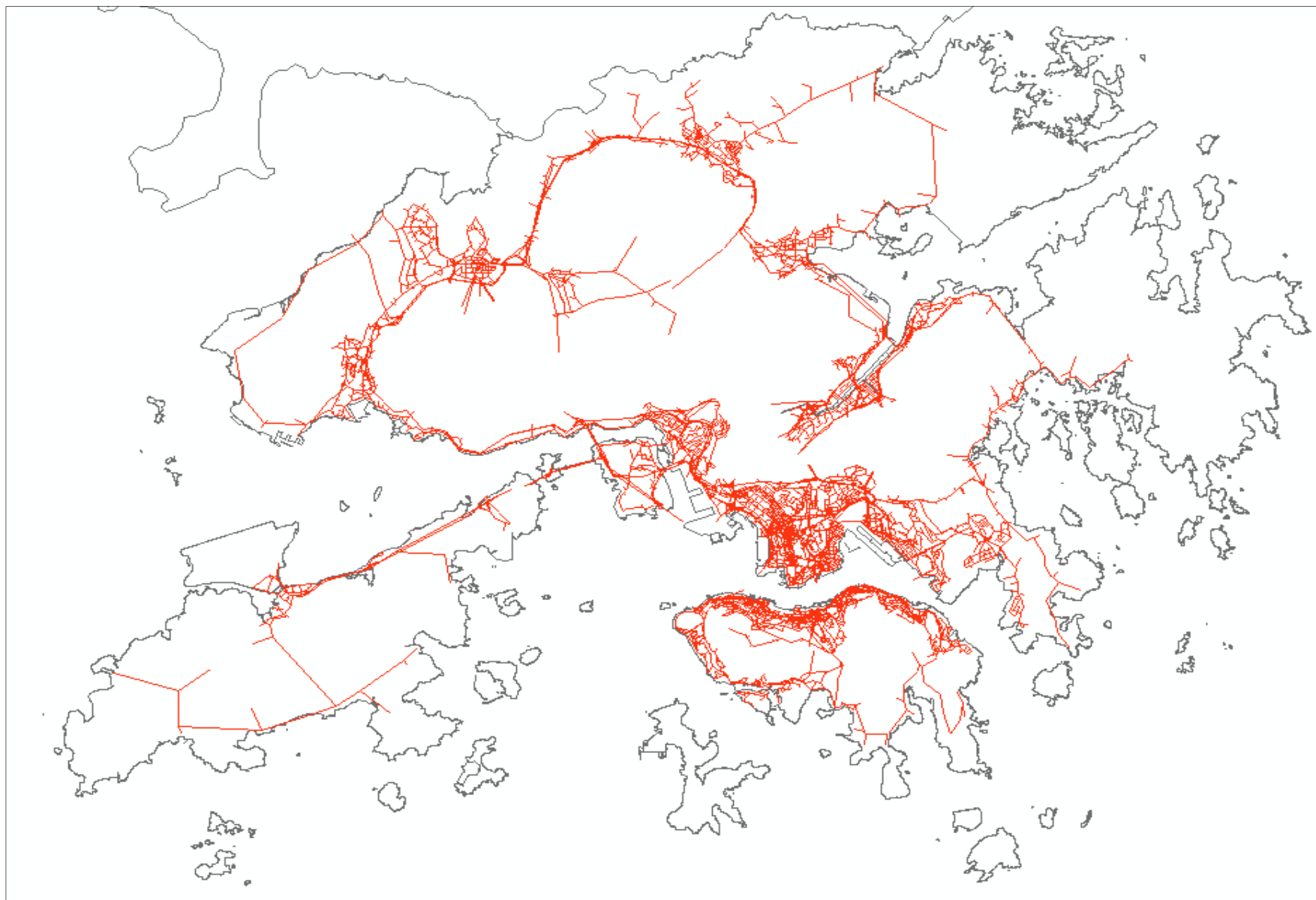
Spatial distributions for marine emissions within HKSAR



Spatial distributions for marine emission of CT10



Spatial distributions for vehicle emissions within HKSAR



Spatial distributions for all point sources adopted in PATH Model

