

## **Appendix 7b.16 Detailed Benthos Survey Results for the Submarine Cable Alignment Cheung Sha**

### **1 Introduction**

The aim of present survey is to obtain ecological baseline information on the benthic condition along the alignment of proposed submarine cable between Shek Kwu Chau and Cheung Sha (South Lantau Island).

### **2 Methodologies**

#### **2.1 Field sampling**

In order to collect comprehensive benthic baseline information along the proposed submarine cable between Shek Kwu Chau and Cheung Sha, benthos sampling was undertaken at four sampling sites (refer to **Figure 7b.4**). Two sampling sites P1 and P3 were located on the alignment of submarine cable. Two sampling sites P2 and P4 were located 380-400 metres away from the alignment. The coordinates of the four sampling sites were fixed by Global Positioning System (GPS) on board (**Table 2.1**). The samplings were conducted in wet season (29<sup>th</sup> August, 2009) and dry season (12<sup>th</sup> December, 2009).

At every sampling site, three replicates of sediment samples were collected using a 0.1 m<sup>2</sup> van Veen grab. Collected samples were accepted when at least two-third of grab volume was filled. A photographic record of the sediment texture and colour was taken. The samples were washed gently with seawater through a wooden box of sieve with 0.5 mm mesh size. Large animals that were visible from the residues were hand-picked into a small plastic vial. All remains were washed and transferred into a plastic container followed by preservation with 70% ethanol solution and staining with 1% Rose Bengal solution.

#### **2.2 Laboratory work**

After arrival to laboratory, the samples were stored for one day to ensure sufficient preservation and staining. The animals collected were sorted out from the sediment residues. For quality assurance, the sediment residues of one-third sorted samples were randomly rechecked. No missed specimen was found in the recheck.

The collected specimens were identified to the lowest taxonomic resolution by a trained technician. Examination of the morphological features of the specimens was undertaken with the aid of both stereoscopic and compound microscopes. The taxonomic classification was conducted in accordance to the following references: Polychaetes: Day (1967), Gallardo (1967), Fauchald (1977), Yang and Sun

(1988), Wu *et al.* (1997), Sun (2004); Crustaceans: Dai and Yang (1991), Dong (1991); Mollusks: Qi (2004). The number of individuals of each species was recorded by counting the anterior portions of the fauna only. Total biomass of each species was determined as preserved wet weight, after blotting the animals on filter paper for 3 minutes before weighing to the nearest 0.0001g.

### 2.3 Data analysis

Data collected from three replicate samples at every sampling site were pooled together for data analysis. Shannon-Weaver Diversity Index ( $H'$ ) and Pielou's Species Evenness ( $J$ ) were calculated using the formulae below,

$$H' = -\sum (N_i / N) \ln (N_i / N) \text{ (Shannon and Weaver, 1963)}$$

$$J = H' / \ln S, \text{ (Pielou, 1966)}$$

where  $S$  is the total number of species in the sample,  $N$  is the total number of individuals, and  $N_i$  is the number of individuals of the  $i^{\text{th}}$  species.

**Table 2.1.** *The GPS coordinates of the sampling sites (in WGS84 datum (ITRF96 Reference Frame))*

| <b>Sampling site</b> | <b>Latitude (N)</b> | <b>Longitude (E)</b> |
|----------------------|---------------------|----------------------|
| P1                   | 22° 13.835'         | 113° 57.804'         |
| P2                   | 22° 13.350'         | 113° 58.164'         |
| P3                   | 22° 12.551'         | 113° 58.263'         |
| P4                   | 22° 11.624'         | 113° 58.392'         |

### 3 Results

#### 3.1 Sediment texture and colour

**Table 3.1** and **Figure 3.1** show the sediment texture and colour at every sampling site. At P1, there was fine sand of about 20% silt-clay fraction (sediment diameter < 64 µm) only. The major particle diameter (~70%) ranged 63-250 µm. At P2, P3 and P4, there was fine mud (~90% silt-clay fraction). The sediments were grey in colour without special odour at all sampling sites in both seasons of sampling.

#### 3.2 Benthic baseline

**Table 3.2** lists the total abundance and total biomass of every faunal group in wet and dry seasons. A total of 919 and 955 specimens were collected in wet and dry seasons respectively. Seventy five of 80 taxa were identified to genus or species levels. The most diverse faunal group was polychaetes (42 species + Aphroditidae spp.) followed by 15 species of crustaceans (13 species + Amphipod spp. + unidentified juvenile shrimp), 12 species of mollusks, 4 species of echinoderms, 2 species of cnidarian, 1 species of echiuran and 1 species of sipunculan. Nemertean and Platyhelminthes were classified into general taxa due to limited taxonomic references. In wet season, 69%, 15%, 8% and 8% of total abundance were polychaetes, echiurans, mollusks and other phyla respectively. The total biomass was 19.2081g, in which 44%, 32%, 14% and 10% of total biomass were echiurans, mollusks, crustaceans and other phyla respectively. In dry season, 72%, 9%, 7% and 12% of total abundance were polychaetes, echiurans, crustaceans and other phyla respectively. The total biomass was 27.4377g, in which 58%, 19%, 9% and 14% of total biomass were echiurans, mollusks, cnidarians and other phyla respectively. The complete list of collected specimens is provided in **Appendices I & II**.

**Table 3.3** shows the percent proportion of every faunal group (in total abundance) at every sampling site in wet and dry seasons. In wet season of sampling, polychaete was the major faunal group at P1 and P2 (94-95% of total abundance). The abundances of other fauna were very less at these two sampling sites (0-2% of total abundance). Polychaete (23-56% of total abundance) and echiuran (16-45% of total abundance) were generally most abundant at P3 and P4. Mollusk was the third abundant group at P3 and P4 (16% of total abundance). Other faunal groups were less in number and contributed less than 10% of total abundance. Similarly, polychaete was still the major faunal group at P1 and P2 (84-91% of total abundance) in dry season of sampling. The abundances of other fauna were less at these two sampling sites (0-11% of total abundance). Polychaete was the most abundant at P3 and P4 (49-68% of total abundance) while echiuran was the second abundant at P4 (30% of total abundance). Other faunal groups contributed less than 10% of total abundance at P3 and P4.

**Table 3.4** shows the total number of species, total abundance, total biomass,  $H'$  and  $J$  at every

sampling site in wet and dry seasons. In wet season of sampling, the total number of species at P1 (18 spp.  $0.3 \text{ m}^{-2}$ ) was less than other sampling sites (31-35 spp.  $0.3 \text{ m}^{-2}$ ). The total abundance at P3 (420 ind.  $\text{m}^{-2}$ ) was less than other sampling sites (830-953 ind.  $\text{m}^{-2}$ ). Similar to total number of species, both  $H'$  (1.03) and  $J$  (0.35) at P1 were less than that of other sampling sites ( $H'$ : 2.17-3.07;  $J$ : 0.63-0.86). In dry season of sampling, the total number of species increased slightly at all sampling sites but there was no noticeable change of total abundance. The total number of species at P1 (29 spp.  $0.3 \text{ m}^{-2}$ ) was less than that of other sampling sites (35-39 spp.  $0.3 \text{ m}^{-2}$ ). The total abundance at P3 (650 ind.  $\text{m}^{-2}$ ) was less than other sampling sites (763-940 ind.  $\text{m}^{-2}$ ). The  $H'$  and  $J$  became similar and ranged 1.99-2.36 and 0.59-0.65 respectively.

The total biomass varied greatly while no spatial difference was noticed. The total biomass varied ranged  $0.95\text{-}38.02 \text{ g m}^{-2}$  and  $2.30\text{-}57.76 \text{ g m}^{-2}$  in wet and dry seasons respectively. In wet season of sampling, the higher biomass at P2, P3 and P4 were generally accounted by 1-2 large species such as bivalve *Tegillarca granosa* (1 ind. at P2) and echiuran *Thalassema sabinum* (20 ind. at P3; 117 ind. at P4). In dry season of sampling, the higher biomass at P2, P3 and P4 were generally accounted by several large species such as bivalves *Macoma praerupta* (2 ind. at P2), *Paphia undulata* (1 ind. at P2), cnidarian *Metedwardsia akkeshi* (7 ind. at P3) and echiuran *Thalassema sabinum* (85 ind. at P4).

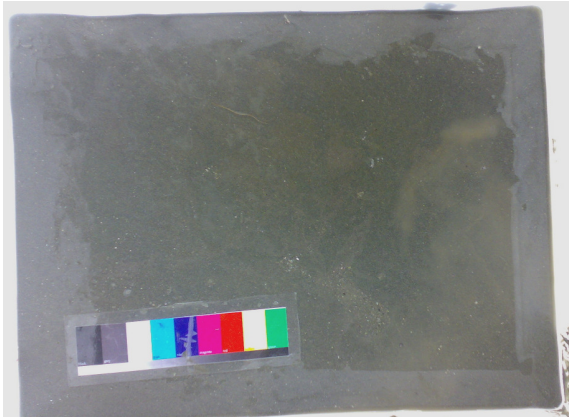
**Table 3.5** lists out the five most abundant species at every sampling site in wet season of sampling. P1 was mainly dominated by polychaete *Magelona* sp. (80% of total abundance) only. P2 was dominated by polychaetes *Paraprionospio pinnata* (27%), *Magelona* sp. (19%) and *Mediomastus* sp. (12%). P3 and P4 were generally dominated by echiuran *Thalassema sabinum* (16-45%), mollusk *Macra ornata* (9-13%), polychaete *Mediomastus* sp. (4-13%) and sipunculan *Apionsoma trichocephalus* (6-9%).

**Table 3.6** lists out the five most abundant species at every sampling site in dry season of sampling. P1 was mainly dominated by polychaetes *Magelona* sp. (45% of total abundance) and *Paraprionospio pinnata* (19%). P2 was dominated by polychaetes *Mediomastus* sp. (36%) and *Magelona* sp. (25%). P3 was dominated by polychaete *Mediomastus* sp. (48%) only. P4 was dominated by polychaete *Mediomastus* sp. (30%) and echiuran *Thalassema sabinum* (30%).

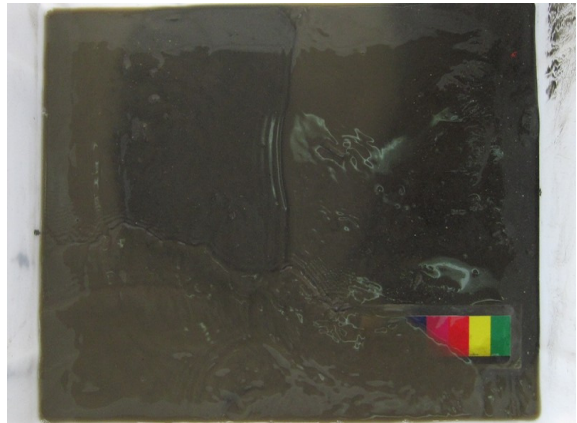
**Table 3.1. Sediment texture and colour at every sampling site in wet and dry seasons**

| Sampling sites | % of silt-clay fraction | Sediment texture | Sediment colour | Level of sulphite smell |            |
|----------------|-------------------------|------------------|-----------------|-------------------------|------------|
|                |                         |                  |                 | Wet season              | Dry season |
| P1             | ~20%                    | Fine sand        | Grey            | ✓                       | ✓          |
| P2             | ~90%                    | Fine mud         | Grey            | ✓                       | ✓          |
| P3             | ~90%                    | Fine mud         | Grey            | ✓                       | ✓          |
| P4             | ~90%                    | Fine mud         | Grey            | ✓                       | ✓          |

Wet



Dry



P1



P2

**Figure 3.1.** *Photographic records of sediment at the sampling sites in wet and dry seasons*

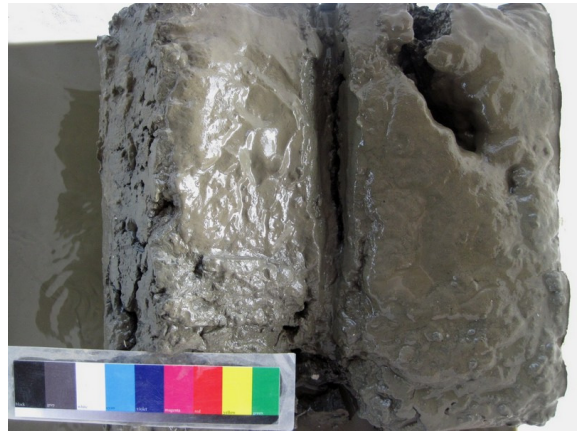
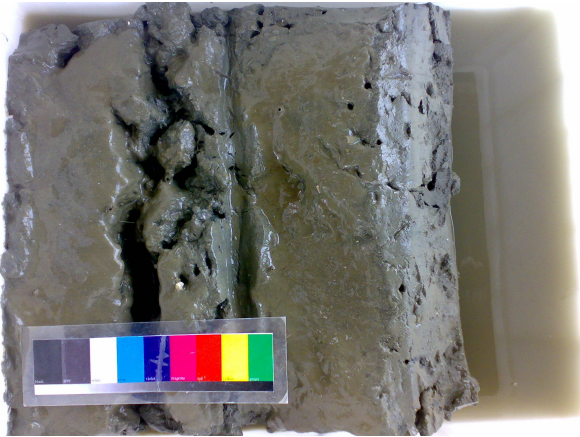
Wet



Dry



P3



P4

**Figure 3.1 (Cont'd).** *Photographic records of sediment at the sampling sites in wet and dry seasons*



**Table 3.2.** Total abundance and total biomass of every faunal group in wet and dry seasons

| <b>Faunal group</b> | <b>Total ind.</b> | <b>%</b> | <b>Total biomass (g)</b> | <b>%</b> |
|---------------------|-------------------|----------|--------------------------|----------|
| <u>Wet season</u>   |                   |          |                          |          |
| Polychaeta          | 636               | 69       | 1.0486                   | 5        |
| Echiura             | 140               | 15       | 8.4530                   | 44       |
| Mollusca            | 70                | 8        | 6.2320                   | 32       |
| Sipuncula           | 31                | 3        | 0.0903                   | 0        |
| Crustacea           | 25                | 3        | 2.6459                   | 14       |
| Nemertea            | 11                | 1        | 0.0334                   | 0        |
| Cnidaria            | 4                 | 0        | 0.6114                   | 3        |
| Echinodermata       | 2                 | 0        | 0.0935                   | 0        |
| <b>Total</b>        | <b>919</b>        |          | <b>19.2081</b>           |          |
| <u>Dry season</u>   |                   |          |                          |          |
| Polychaeta          | 687               | 72       | 1.5236                   | 6        |
| Echiura             | 88                | 9        | 15.8604                  | 58       |
| Crustacea           | 66                | 7        | 1.6316                   | 6        |
| Sipuncula           | 44                | 5        | 0.1479                   | 1        |
| Mollusca            | 23                | 2        | 5.2629                   | 19       |
| Echinodermata       | 20                | 2        | 0.3187                   | 1        |
| Nemertea            | 18                | 2        | 0.3484                   | 1        |
| Cnidaria            | 8                 | 1        | 2.3427                   | 9        |
| Platyhelminthes     | 1                 | 0        | 0.0015                   | 0        |
| <b>Total</b>        | <b>955</b>        |          | <b>27.4377</b>           |          |

0 %: total individual / biomass of the faunal group is less than 1% of that of all specimens

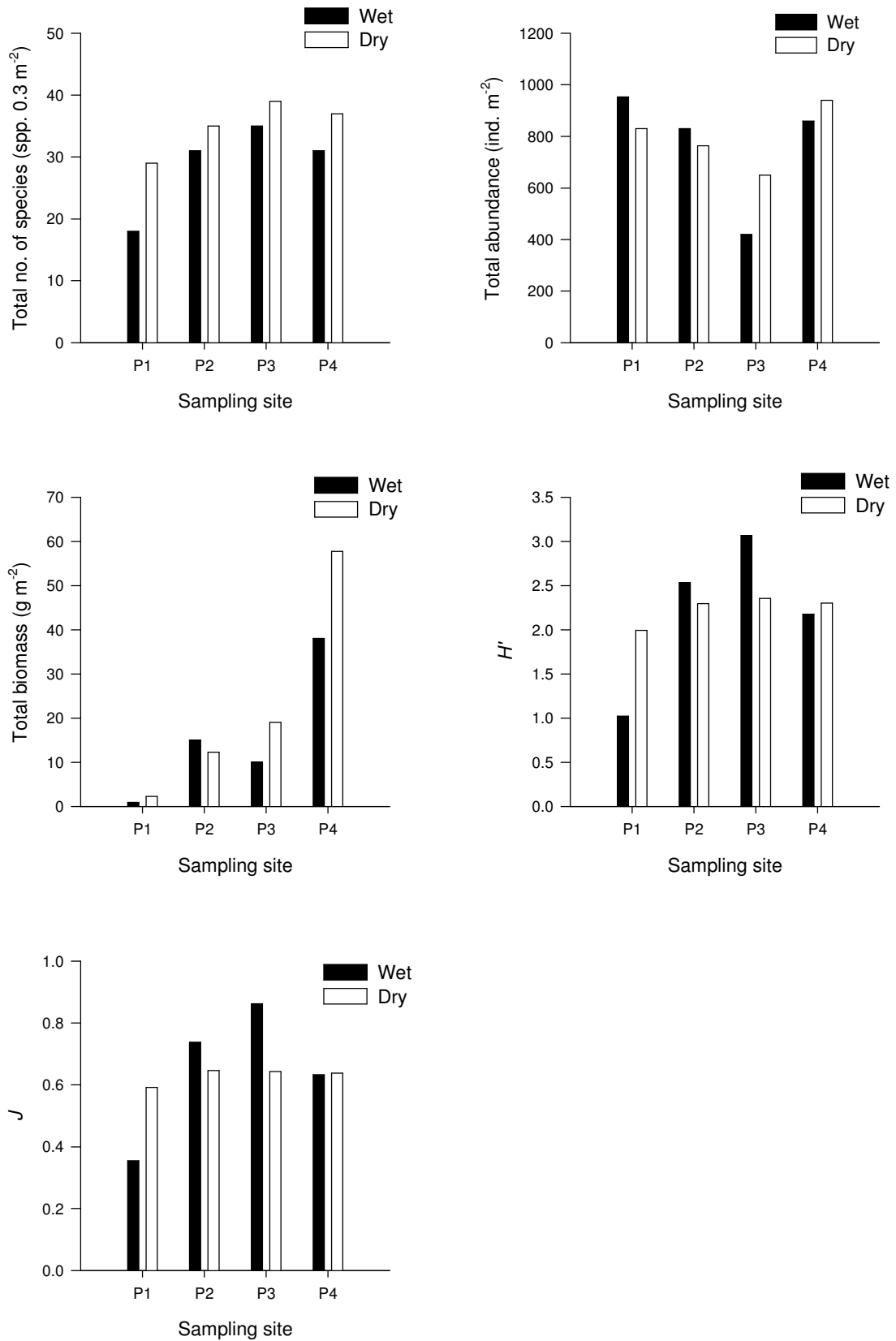
**Table 3.3.** *The percent proportion of faunal groups (in total abundance) at every sampling site in wet and dry seasons*

| <b>% Proportion of faunal group</b> | <b>P1</b> | <b>P2</b> | <b>P3</b> | <b>P4</b> |
|-------------------------------------|-----------|-----------|-----------|-----------|
| <u>Wet season</u>                   |           |           |           |           |
| Polychaeta                          | 95        | 94        | 56        | 23        |
| Echiura                             |           | 1         | 16        | 45        |
| Mollusca                            | 2         | 2         | 16        | 16        |
| Sipuncula                           |           | 0         | 6         | 9         |
| Crustacea                           | 2         | 0         | 3         | 6         |
| Nemertea                            | 1         | 2         | 2         | 0         |
| Cnidaria                            |           |           | 2         | 1         |
| Echinodermata                       | 0         | 0         |           |           |
| <u>Dry season</u>                   |           |           |           |           |
| Polychaeta                          | 84        | 91        | 68        | 49        |
| Sipuncula                           |           | 0         | 10        | 8         |
| Crustacea                           | 11        | 2         | 7         | 7         |
| Echinodermata                       |           | 0         | 6         | 2         |
| Cnidaria                            | 0         |           | 4         |           |
| Mollusca                            | 2         | 3         | 3         | 2         |
| Nemertea                            | 2         | 3         | 2         | 1         |
| Echiura                             |           | 1         | 1         | 30        |
| Platyhelminthes                     |           | 0         |           |           |

0 %: Percentage proportion of the faunal group is less than 1% of that of all specimens

**Table 3.4.** Number of species, total abundance, total biomass, Shannon-Weaver Diversity Index ( $H'$ ) and Pielou's Species Evenness ( $J$ ) at every sampling site in wet and dry seasons

|   | <b>Season</b> | <b>P1</b> | <b>P2</b> | <b>P3</b> | <b>P4</b> |
|---|---------------|-----------|-----------|-----------|-----------|
| <b>Total number of species</b><br>(spp. 0.3 m <sup>-2</sup> )   | Wet           | 18        | 31        | 35        | 31        |
|   | Dry           | 29        | 35        | 39        | 37        |
| <b>Total abundance</b><br>(ind. m <sup>-2</sup> )               | Wet           | 953       | 830       | 420       | 860       |
|   | Dry           | 830       | 763       | 650       | 940       |
| <b>Total biomass</b><br>(g m <sup>-2</sup> )                    | Wet           | 0.9493    | 15.0320   | 10.0210   | 38.0247   |
|   | Dry           | 2.2960    | 12.3237   | 19.0793   | 57.7600   |
| <b>Shannon-Weaver</b><br><b>Diversity Index <math>H'</math></b> | Wet           | 1.03      | 2.54      | 3.07      | 2.17      |
|   | Dry           | 1.99      | 2.30      | 2.36      | 2.30      |
| <b>Pielou's Species</b><br><b>Evenness <math>J</math></b>       | Wet           | 0.35      | 0.74      | 0.86      | 0.63      |
|   | Dry           | 0.59      | 0.65      | 0.64      | 0.64      |



**Figure 3.2.** Number of species, total abundance, total biomass, Shannon-Weaver Diversity Index ( $H'$ ) and Pielou's Species Evenness ( $J$ ) at every sampling site in wet and dry seasons

**Table 3.5.** The five most abundant species at every sampling site in wet season

| Sampling point | Group | Species                         | mean density<br>(ind. m <sup>-2</sup> ) | mean biomass<br>(g m <sup>-2</sup> ) | relative abundance<br>(%) |
|----------------|-------|---------------------------------|---|--------------------------------------|---------------------------|
| P 1            | P     | <i>Magelona</i> sp.             | 760                                     | 0.2857                               | 80                        |
|                | P     | <i>Glycera tridactyla</i>       | 33                                      | 0.0430                               | 3                         |
|                | P     | <i>Cirriformia</i> sp.          | 20                                      | 0.2157                               | 2                         |
|                | P     | <i>Glycinde gurjanovae</i>      | 20                                      | 0.0173                               | 2                         |
|                | P     | <i>Paraprionospio pinnata</i>   | 20                                      | 0.0097                               | 2                         |
| P 2            | P     | <i>Paraprionospio pinnata</i>   | 223                                     | 0.1507                               | 27                        |
|                | P     | <i>Magelona</i> sp.             | 160                                     | 0.0530                               | 19                        |
|                | P     | <i>Mediomastus</i> sp.          | 97                                      | 0.1363                               | 12                        |
|                | P     | <i>Prionospio malmgreni</i>     | 43                                      | 0.0073                               | 5                         |
|                | P     | <i>Decamastus</i> sp.           | 43                                      | 0.0440                               | 5                         |
| P 3            | Eh    | <i>Thalassema sabinum</i>       | 67                                      | 5.0327                               | 16                        |
|                | P     | <i>Mediomastus</i> sp.          | 57                                      | 0.0823                               | 13                        |
|                | M     | <i>Mactra ornata</i>            | 37                                      | 1.0320                               | 9                         |
|                | Sp    | <i>Apionsoma trichocephalus</i> | 23                                      | 0.0707                               | 6                         |
|                | P     | <i>Glycera tridactyla</i>       | 20                                      | 0.0083                               | 5                         |
| P 4            | Eh    | <i>Thalassema sabinum</i>       | 390                                     | 20.8307                              | 45                        |
|                | M     | <i>Mactra ornata</i>            | 110                                     | 2.7007                               | 13                        |
|                | Sp    | <i>Apionsoma trichocephalus</i> | 77                                      | 0.2147                               | 9                         |
|                | P     | <i>Mediomastus</i> sp.          | 37                                      | 0.0613                               | 4                         |
|                | P     | Aphroditidae spp                | 37                                      | 0.5263                               | 4                         |

**Table 3.6.** The five most abundant species at every sampling site in dry season

| Sampling point | Group | Species                          | mean density (ind. m <sup>-2</sup> ) | mean biomass (g m <sup>-2</sup> ) | relative abundance (%) |
|----------------|-------|----------------------------------|--------------------------------------|-----------------------------------|------------------------|
| P 1            | P     | <i>Magelona</i> sp.              | 377                                  | 0.2697                            | 45                     |
|                | P     | <i>Paraprionospio pinnata</i>    | 160                                  | 0.2277                            | 19                     |
|                | C     | Amphipod spp.                    | 80                                   | 0.0447                            | 10                     |
|                | P     | <i>Glycinde gurjanovae</i>       | 47                                   | 0.0200                            | 6                      |
|                | N     | Nemertean spp.                   | 20                                   | 0.2687                            | 2                      |
| P 2            | P     | <i>Mediomastus</i> sp.           | 273                                  | 0.2237                            | 36                     |
|                | P     | <i>Magelona</i> sp.              | 193                                  | 0.1017                            | 25                     |
|                | P     | <i>Glycinde gurjanovae</i>       | 33                                   | 0.0243                            | 4                      |
|                | P     | <i>Paraprionospio pinnata</i>    | 30                                   | 0.0213                            | 4                      |
|                | P     | <i>Prionospio malmgreni</i>      | 30                                   | 0.0233                            | 4                      |
| P 3            | P     | <i>Mediomastus</i> sp.           | 313                                  | 0.2837                            | 48                     |
|                | Sp    | <i>Apionsoma trichocephalus</i>  | 67                                   | 0.2460                            | 10                     |
|                | Cn    | <i>Metedwardsia akkeshi</i>      | 23                                   | 7.7987                            | 4                      |
|                | C     | <i>Neoxenophthalmus obscurus</i> | 20                                   | 0.9107                            | 3                      |
|                | P     | <i>Magelona</i> sp.              | 17                                   | 0.0043                            | 3                      |
| P 4            | P     | <i>Mediomastus</i> sp.           | 283                                  | 0.3150                            | 30                     |
|                | Eh    | <i>Thalassema sabinum</i>        | 283                                  | 51.5943                           | 30                     |
|                | Sp    | <i>Apionsoma trichocephalus</i>  | 77                                   | 0.2450                            | 8                      |
|                | P     | <i>Harmothoe imbricata</i>       | 40                                   | 0.7787                            | 4                      |
|                | C     | Amphipod spp.                    | 30                                   | 0.0077                            | 3                      |

#### 4 References

- Borja, A., Franco, J., Pe'rez, V., 2000. A marine biotic index to establish the ecological quality of soft-bottom benthos within European estuarine and coastal environments. *Marine Pollution Bulletin* 40, 1100–1114.
- Cheung, S.G., Lam, N.W.Y., Wu, R.S.S., Shin, P.K.S., 2008. Spatio-temporal changes of marine macrobenthic community in sub-tropical waters upon recovery from eutrophication. II. Life-history traits and feeding guilds of polychaete community. *Marine Pollution Bulletin* 56, 297–307.
- CPSL (CityU Professional Services Limited), 2002. Consultancy Study on Marine Benthic Communities in Hong Kong (Agreement No. CE 69/2000) submitted to Agriculture, Fisheries and Conservation Department, HKSAR Government. Centre for Coastal Pollution and Conservation, CityU Professional Services Limited.
- Dai, A.Y., Yang, S.L., 1991. *Crabs of the China Seas*. China Ocean Press. Beijing.
- Day, J.H., 1967. A monograph on the polychaeta of South Africa. Trustees of the British Museum (Natural History). London.
- Dong, Y.M., 1991. *Fauna of ZheJiang Crustacea*. Zhejiang Science and Technology Publishing House. ZheJiang.
- EPD, 1997. *Technical Memorandum on Environmental Impact Assessment Process* (1<sup>st</sup> edition). Environmental Protection Department, HKSAR Government.
- EPD, 2006. *20 Years of Marine Water Quality Monitoring in Hong Kong 1986-2005*. In: web site of Environmental Protection Department, HKSAR Government [Latest retrieved July 2009 from [http://www.epd.gov.hk/epd/misc/marine\\_quality/1986-2005/index.html](http://www.epd.gov.hk/epd/misc/marine_quality/1986-2005/index.html)].
- EPD, 2009. *Marine Water Quality 2008*. Environmental Protection Department, HKSAR Government, pp 141.
- Fauchald, K., 1977. *The polychaete worms. Definitions and keys to the orders, families and genera*. Natural History Museum of Los Angeles County, Science Series 28. Los Angeles, U.S.A..
- Fauchald, K., Jumars, P.A., 1979. The diet of worms: a study of polychaete feeding guilds. *Oceanography and Marine Biology: An Annual Review* 17, 193–284.

- Gallardo, V., 1967. Polychaeta from the Bay of Nha Trang, South Viet Nam. In: Scientific Results of Marine Investigations of the South China Sea and the Gulf of Thailand 1959-1961, Naga Report 4(3). Scripps Institution of Oceanography, University of California Press. La Jolla, California, 35-279.
- Gray, J.S., Wu, R.S.S., Or, Y.Y., 2002. Effects of hypoxia and organic enrichment on the coastal marine environment. Marine Ecology Progress Series 238, 249-279.
- NEL, 2009a. Benthos survey report (Dry and Wet Seasons) submitted to ENSR Asia (HK) Limited for project 'Engineering Investigation and Environmental Studies for Integrated Waste Management Facilities Phase 1 – Feasibility Study – Benthos Survey'. Neanthes Eco-consultant Limited. *in press*.
- NEL, 2009b. Benthos survey report (Dry and Wet Seasons) submitted to ENSR Asia (HK) Limited for project 'Lung Kwu Sheung Tan Barging Point – Benthos Survey'. Neanthes Eco-consultant Limited. *in press*.
- NEL, 2009c. Benthos survey report (Dry and Wet Seasons) submitted to ENSR Asia (HK) Limited for project 'Shatin To Central Link (SCL) Environmental Impact Assessment For Cross Harbour Section (Phase II) – Baseline Marine Ecological Survey'. Neanthes Eco-consultant Limited. *in press*.
- Pielou, E.C., 1966. Shannon's formula as a measure of species diversity: its use and misuse. American Naturalist 100, 463-465.
- Qi, Z.Y., 2004. Seashells of China. China Ocean Press. Beijing, China.
- Shannon, C.E., Weaver, W., 1963. The Mathematical Theory of Communication. Urbana: University of Illinois Press, USA.
- Shin, P.K.S., Huang, Z.G., Wu, R.S.S., 2004. An updated baseline of subtropical macrobenthic communities in Hong Kong. Marine Pollution Bulletin 49, 119-141.
- Sun, R.P., Yang, D.J., 2004. Fauna Sinica. Phylum Annelida. Class Polychaeta II, Order Nereidida. Science Press. Beijing.



Wu, B.L., Wu, Q.Q., Qiu, J.W., Lu, H., 1997. Fauna Sinica, Phylum Annelida, Class Polychaeta, Order Phyllodocimorpha. Science Press. Beijing.

Yang, D.J, Sun, R.P., 1988. Polychaetous annelids commonly seen from the Chinese waters (Chinese version). China Agriculture Press, China.

**Appendix I** List of collected specimens at every sampling site in wet season

| Sampling point: P1 |        |                                |                               |                                   |                               |                                   |                               |                                   |                               |                                   |      | Sampling date: 29/08/2009 |      |  |  |  |  |
|--------------------|--------|--------------------------------|-------------------------------|-----------------------------------|-------------------------------|-----------------------------------|-------------------------------|-----------------------------------|-------------------------------|-----------------------------------|------|---------------------------|------|--|--|--|--|
| No                 | Groups | Species                        | 1                             |                                   | 2                             |                                   | 3                             |                                   | Total                         |                                   |      |                           |      |  |  |  |  |
|                    |        |                                | Ind.<br>(/0.1m <sup>2</sup> ) | Wet wt.<br>(g/0.1m <sup>2</sup> ) | Ind.<br>(/0.1m <sup>2</sup> ) | Wet wt.<br>(g/0.1m <sup>2</sup> ) | Ind.<br>(/0.1m <sup>2</sup> ) | Wet wt.<br>(g/0.1m <sup>2</sup> ) | Ind.<br>(/0.3m <sup>2</sup> ) | Wet wt.<br>(g/0.3m <sup>2</sup> ) |      |                           |      |  |  |  |  |
| 1                  | P      | <i>Aglaophamus dibranchis</i>  |                               |                                   |                               |                                   | 2                             | 0.00                              |                               | 2                                 | 0.00 | 2                         | 0.00 |  |  |  |  |
| 2                  | P      | <i>Cirriformia</i> sp.         | 2                             | 0.03                              | 3                             | 0.03                              | 1                             | 0.00                              |                               | 6                                 | 0.06 | 6                         | 0.06 |  |  |  |  |
| 3                  | P      | <i>Glycera tridactyla</i>      | 2                             | 0.00                              | 2                             | 0.00                              | 6                             | 0.01                              |                               | 10                                | 0.01 | 10                        | 0.01 |  |  |  |  |
| 4                  | P      | <i>Glycinde gurjanovae</i>     | 3                             | 0.00                              |                               |                                   | 3                             | 0.00                              |                               | 6                                 | 0.01 | 6                         | 0.01 |  |  |  |  |
| 5                  | P      | <i>Magelona</i> sp.            | 67                            | 0.04                              | 82                            | 0.04                              | 79                            | 0.01                              |                               | 228                               | 0.09 | 228                       | 0.09 |  |  |  |  |
| 6                  | P      | <i>Mediomastus</i> sp.         | 2                             | 0.00                              |                               |                                   | 1                             | 0.00                              |                               | 3                                 | 0.00 | 3                         | 0.00 |  |  |  |  |
| 7                  | P      | <i>Paraprionospio pinnata</i>  |                               |                                   | 3                             | 0.00                              | 3                             | 0.00                              |                               | 6                                 | 0.00 | 6                         | 0.00 |  |  |  |  |
| 8                  | P      | <i>Pista</i> sp.               |                               |                                   | 1                             | 0.00                              |                               |                                   |                               | 1                                 | 0.00 | 1                         | 0.00 |  |  |  |  |
| 9                  | P      | <i>Poecilochaetus</i> sp. 1    |                               |                                   |                               |                                   | 1                             | 0.00                              |                               | 1                                 | 0.00 | 1                         | 0.00 |  |  |  |  |
| 10                 | P      | <i>Prionospio malmgreni</i>    | 1                             | 0.00                              |                               |                                   | 3                             | 0.00                              |                               | 4                                 | 0.00 | 4                         | 0.00 |  |  |  |  |
| 11                 | P      | <i>Prionospio saccifera</i> nc |                               |                                   |                               |                                   | 1                             | 0.00                              |                               | 1                                 | 0.00 | 1                         | 0.00 |  |  |  |  |
| 12                 | P      | <i>Rhynchospio</i> sp.         |                               |                                   |                               |                                   | 1                             | 0.05                              |                               | 1                                 | 0.05 | 1                         | 0.05 |  |  |  |  |
| 13                 | P      | <i>Sternaspis sculata</i>      |                               |                                   | 2                             | 0.00                              |                               |                                   |                               | 2                                 | 0.00 | 2                         | 0.00 |  |  |  |  |
| 14                 | C      | <i>Alpheus</i> sp. 1           | 2                             | 0.00                              | 2                             | 0.00                              |                               |                                   |                               | 4                                 | 0.00 | 4                         | 0.00 |  |  |  |  |
| 15                 | C      | Unidentified juvenile shrimp   | 1                             | 0.00                              |                               |                                   |                               |                                   |                               | 1                                 | 0.00 | 1                         | 0.00 |  |  |  |  |

P = Polychaeta, C = Crustacea, M = Mollusca, N = Nemertea, Ec = Echinodermata  
 Biomass = 0.00 g / 0.1m<sup>2</sup> : The specimen with total biomass less than 0.01 g / 0.1m<sup>2</sup>

**Appendix I (cont'd) List of collected specimens at every sampling site in wet season**

| Sampling point: P1 Sampling date: 29/08/2009 |        |                           |                               |                                   |                               |                                   |                               |                                   |                               |                                   |      |
|--|--------|---------------------------|-------------------------------|-----------------------------------|-------------------------------|-----------------------------------|-------------------------------|-----------------------------------|-------------------------------|-----------------------------------|------|
| No   | Groups | Species                   | 1                             |                                   | 2                             |                                   | 3                             |                                   | Total                         |                                   |      |
|  |        |                           | Ind.<br>(/0.1m <sup>2</sup> ) | Wet wt.<br>(g/0.1m <sup>2</sup> ) | Ind.<br>(/0.1m <sup>2</sup> ) | Wet wt.<br>(g/0.1m <sup>2</sup> ) | Ind.<br>(/0.1m <sup>2</sup> ) | Wet wt.<br>(g/0.1m <sup>2</sup> ) | Ind.<br>(/0.3m <sup>2</sup> ) | Wet wt.<br>(g/0.3m <sup>2</sup> ) |      |
| 16   | N      | Nemertean spp.            | 1                             | 0.00                              |                               |                                   | 2                             | 0.00                              | 3                             | 0.00                              | 0.00 |
| 17   | M      | <i>Theora lata</i>        | 3                             | 0.00                              | 2                             | 0.02                              | 1                             | 0.00                              | 6                             | 0.02                              | 0.02 |
| 18   | Ec     | <i>Amphioplus lucidus</i> |                               |                                   |                               |                                   | 1                             | 0.02                              | 1                             | 0.02                              | 0.02 |
|  |        |                           |                               |                                   |                               |                                   |                               |                                   |                               |                                   |      |
|  | Total  |                           | 84                            | 0.073                             | 97                            | 0.1026                            | 105                           | 0.1092                            | 286                           | 0.28                              |      |

P = Polychaeta, C = Crustacea, M = Mollusca, N = Nemertea, Ec = Echinodermata  
 Biomass = 0.00 g / 0.1m<sup>2</sup> : The specimen with total biomass less than 0.01 g / 0.1m<sup>2</sup>

**Appendix I (cont'd) List of collected specimens at every sampling site in wet season**

|    |        | Sampling point: P2            |                               |                                   |                               |                                   |                               | Sampling date: 29/08/2009         |                               |                                   |    |      |  |
|----|--------|-------------------------------|-------------------------------|-----------------------------------|-------------------------------|-----------------------------------|-------------------------------|-----------------------------------|-------------------------------|-----------------------------------|----|------|--|
| No | Groups | Species                       | 1                             |                                   | 2                             |                                   | 3                             |                                   | Total                         |                                   |    |      |  |
|    |        |                               | Ind.<br>(/0.1m <sup>2</sup> ) | Wet wt.<br>(g/0.1m <sup>2</sup> ) | Ind.<br>(/0.1m <sup>2</sup> ) | Wet wt.<br>(g/0.1m <sup>2</sup> ) | Ind.<br>(/0.1m <sup>2</sup> ) | Wet wt.<br>(g/0.1m <sup>2</sup> ) | Ind.<br>(/0.3m <sup>2</sup> ) | Wet wt.<br>(g/0.3m <sup>2</sup> ) |    |      |  |
| 1  | P      | <i>Amphicteis gunneri</i>     |                               |                                   |                               |                                   | 1                             | 0.00                              | 1                             | 0.00                              | 1  | 0.00 |  |
| 2  | P      | <i>Chaetozone</i> sp.         | 3                             | 0.00                              | 3                             | 0.00                              | 2                             | 0.00                              | 8                             | 0.00                              | 8  | 0.00 |  |
| 3  | P      | <i>Cirriiformia</i> sp.       | 2                             | 0.00                              | 2                             | 0.00                              | 1                             | 0.02                              | 5                             | 0.02                              | 5  | 0.02 |  |
| 4  | P      | <i>Cossurella dimorpha</i>    | 1                             | 0.00                              |                               |                                   |                               |                                   | 1                             | 0.00                              | 1  | 0.00 |  |
| 5  | P      | <i>Decamastus</i> sp.         | 5                             | 0.01                              |                               |                                   | 8                             | 0.00                              | 13                            | 0.01                              | 13 | 0.01 |  |
| 6  | P      | <i>Euchymene oerstedii</i>    | 3                             | 0.00                              |                               |                                   |                               |                                   | 3                             | 0.00                              | 3  | 0.00 |  |
| 7  | P      | <i>Glycera tridactyla</i>     | 3                             | 0.00                              | 2                             | 0.00                              | 2                             | 0.00                              | 8                             | 0.00                              | 8  | 0.01 |  |
| 8  | P      | <i>Glycinde gurjanovae</i>    | 4                             | 0.00                              | 2                             | 0.00                              | 4                             | 0.00                              | 10                            | 0.00                              | 10 | 0.00 |  |
| 9  | P      | <i>Loimia</i> sp.             |                               |                                   | 2                             | 0.00                              |                               |                                   | 2                             | 0.00                              | 2  | 0.00 |  |
| 10 | P      | <i>Lumbrineris</i> sp. 1      | 1                             | 0.00                              |                               |                                   | 4                             | 0.00                              | 5                             | 0.00                              | 5  | 0.00 |  |
| 11 | P      | <i>Magelona</i> sp.           | 15                            | 0.00                              | 14                            | 0.01                              | 19                            | 0.01                              | 48                            | 0.02                              | 48 | 0.02 |  |
| 12 | P      | <i>Mediomastus</i> sp.        | 14                            | 0.01                              | 8                             | 0.01                              | 7                             | 0.02                              | 29                            | 0.04                              | 29 | 0.04 |  |
| 13 | P      | <i>Notomastus</i> sp.         |                               |                                   |                               |                                   | 1                             | 0.00                              | 1                             | 0.00                              | 1  | 0.00 |  |
| 14 | P      | <i>Paraonella</i> sp.         | 1                             | 0.00                              | 2                             | 0.00                              |                               |                                   | 3                             | 0.00                              | 3  | 0.00 |  |
| 15 | P      | <i>Paraprionospio pinnata</i> | 19                            | 0.01                              | 21                            | 0.02                              | 27                            | 0.02                              | 67                            | 0.05                              | 67 | 0.05 |  |

P = Polychaeta, C = Crustacea, M = Mollusca, N = Nemeritea, Sp = Sipuncula, Eh = Echiura, Ec = Echinodermata

Biomass = 0.00 g / 0.1m<sup>2</sup> : The specimen with total biomass less than 0.01 g / 0.1m<sup>2</sup>

**Appendix I (cont'd)** List of collected specimens at every sampling site in wet season

| No | Groups | Species                        | Sampling point: P2            |                                   |                               |                                   |                               |                                   | Sampling date: 29/08/2009     |                                   |      |      |  |  |
|----|--------|--------------------------------|-------------------------------|-----------------------------------|-------------------------------|-----------------------------------|-------------------------------|-----------------------------------|-------------------------------|-----------------------------------|------|------|--|--|
|    |        |                                | 1                             |                                   | 2                             |                                   | 3                             |                                   | Total                         |                                   |      |      |  |  |
|    |        |                                | Ind.<br>(/0.1m <sup>2</sup> ) | Wet wt.<br>(g/0.1m <sup>2</sup> ) | Ind.<br>(/0.1m <sup>2</sup> ) | Wet wt.<br>(g/0.1m <sup>2</sup> ) | Ind.<br>(/0.1m <sup>2</sup> ) | Wet wt.<br>(g/0.1m <sup>2</sup> ) | Ind.<br>(/0.3m <sup>2</sup> ) | Wet wt.<br>(g/0.3m <sup>2</sup> ) |      |      |  |  |
| 16 | P      | <i>Pectinaria conchilega</i>   | 2                             | 0.00                              |                               |                                   |                               |                                   |                               | 2                                 | 0.00 |      |  |  |
| 17 | P      | <i>Phyllodoce</i> sp. 1        | 1                             | 0.00                              |                               |                                   |                               |                                   |                               | 1                                 | 0.00 |      |  |  |
| 18 | P      | <i>Poecilochaetus</i> sp. 1    | 1                             | 0.00                              | 1                             | 0.00                              |                               |                                   |                               | 2                                 | 0.00 |      |  |  |
| 19 | P      | <i>Prionospio malmgreni</i>    | 4                             | 0.00                              | 3                             | 0.00                              | 6                             | 0.00                              |                               | 13                                | 0.00 |      |  |  |
| 20 | P      | <i>Scolelepis squamata</i>     |                               |                                   | 1                             | 0.00                              |                               |                                   |                               | 1                                 | 0.00 |      |  |  |
| 21 | P      | <i>Sternaspis sculata</i>      | 3                             | 0.03                              | 3                             | 0.02                              |                               |                                   |                               | 6                                 | 0.05 |      |  |  |
| 22 | P      | <i>Terebellides stroemii</i>   |                               |                                   |                               |                                   |                               |                                   | 3                             | 0.00                              | 3    | 0.00 |  |  |
| 23 | P      | <i>Tharyx</i> sp.              |                               |                                   |                               |                                   |                               |                                   | 3                             | 0.00                              | 3    | 0.00 |  |  |
| 24 | M      | <i>Macra ornata</i>            | 1                             | 0.03                              |                               |                                   |                               |                                   | 1                             | 0.06                              | 2    | 0.10 |  |  |
| 25 | M      | <i>Solen dunkerianus</i>       |                               |                                   | 1                             | 0.00                              |                               |                                   |                               | 1                                 | 0.00 |      |  |  |
| 26 | M      | <i>Tegillarca granosa</i>      |                               |                                   |                               |                                   |                               |                                   | 1                             | 3.24                              | 1    | 3.24 |  |  |
| 27 | N      | Nemertean spp.                 | 2                             | 0.02                              | 1                             | 0.01                              |                               |                                   | 1                             | 0.00                              | 4    | 0.03 |  |  |
| 28 | Eh     | <i>Thalassema sabinum</i>      |                               |                                   |                               |                                   |                               |                                   | 3                             | 0.69                              | 3    | 0.69 |  |  |
| 29 | Ec     | <i>Amphioplus laevis</i>       | 1                             | 0.07                              |                               |                                   |                               |                                   |                               | 1                                 | 0.07 |      |  |  |
| 30 | C      | <i>Typhlocarcinus villosus</i> |                               |                                   |                               |                                   |                               |                                   | 1                             | 0.16                              | 1    | 0.16 |  |  |

P = Polychaeta, C = Crustacea, M = Mollusca, N = Nemertea, Sp = Sipuncula, Eh = Echiura, Ec = Echinodermata

Biomass = 0.00 g / 0.1m<sup>2</sup> : The specimen with total biomass less than 0.01 g / 0.1m<sup>2</sup>

**Appendix I (cont'd)** List of collected specimens at every sampling site in wet season

| Sampling point: P2      Sampling date: 29/08/2009 |        |                                 |                               |                                   |                               |                                   |                               |                                   |                               |                                   |      |
|---|--------|---------------------------------|-------------------------------|-----------------------------------|-------------------------------|-----------------------------------|-------------------------------|-----------------------------------|-------------------------------|-----------------------------------|------|
| No  | Groups | Species                         | 1                             |                                   | 2                             |                                   | 3                             |                                   | Total                         |                                   |      |
|   |        |                                 | Ind.<br>(/0.1m <sup>2</sup> ) | Wet wt.<br>(g/0.1m <sup>2</sup> ) | Ind.<br>(/0.1m <sup>2</sup> ) | Wet wt.<br>(g/0.1m <sup>2</sup> ) | Ind.<br>(/0.1m <sup>2</sup> ) | Wet wt.<br>(g/0.1m <sup>2</sup> ) | Ind.<br>(/0.3m <sup>2</sup> ) | Wet wt.<br>(g/0.3m <sup>2</sup> ) |      |
| 31  | Sp     | <i>Apionsoma trichocephalus</i> | 1                             | 0.00                              |                               |                                   |                               |                                   |                               | 1                                 | 0.00 |
|   |        |                                 |                               |                                   |                               |                                   |                               |                                   |                               |                                   |      |
|   | Total  |                                 | 87                            | 0.201                             | 66                            | 0.07                              | 96                            | 4.24                              | 249                           | 4.51                              |      |

P = Polychaeta, C = Crustacea, M = Mollusca, N = Nemertea, Sp = Sipuncula, Eh = Echiura, Ec = Echinodermata

Biomass = 0.00 g / 0.1m<sup>2</sup> : The specimen with total biomass less than 0.01 g / 0.1m<sup>2</sup>

**Appendix I (cont'd) List of collected specimens at every sampling site in wet season**

| Sampling point: P3 Sampling date: 29/08/2009 |        |                                   |                               |                                   |                               |                                   |                               |                                   |                               |                                   |  |  |
|--|--------|-----------------------------------|-------------------------------|-----------------------------------|-------------------------------|-----------------------------------|-------------------------------|-----------------------------------|-------------------------------|-----------------------------------|--|--|
| No   | Groups | Species                           | 1                             |                                   | 2                             |                                   | 3                             |                                   | Total                         |                                   |  |  |
|  |        |                                   | Ind.<br>(/0.1m <sup>2</sup> ) | Wet wt.<br>(g/0.1m <sup>2</sup> ) | Ind.<br>(/0.1m <sup>2</sup> ) | Wet wt.<br>(g/0.1m <sup>2</sup> ) | Ind.<br>(/0.1m <sup>2</sup> ) | Wet wt.<br>(g/0.1m <sup>2</sup> ) | Ind.<br>(/0.3m <sup>2</sup> ) | Wet wt.<br>(g/0.3m <sup>2</sup> ) |  |  |
| 1  | P      | <i>Aglaophamus dibranchis</i>     | 2                             | 0.00                              | 1                             | 0.00                              |                               |                                   | 3                             | 0.00                              |  |  |
| 2  | P      | <i>Aglaophamus sinensis</i>       |                               |                                   |                               |                                   | 2                             | 0.00                              | 2                             | 0.00                              |  |  |
| 3  | P      | <i>Amphicteis gunneri</i>         | 1                             | 0.00                              |                               |                                   |                               |                                   | 1                             | 0.00                              |  |  |
| 4  | P      | Aphroditidae spp                  |                               |                                   | 2                             | 0.08                              | 1                             | 0.01                              | 3                             | 0.09                              |  |  |
| 5  | P      | <i>Cirriformia</i> sp.            | 2                             | 0.00                              |                               |                                   |                               |                                   | 2                             | 0.00                              |  |  |
| 6  | P      | <i>Euchymene oerstedii</i>        |                               |                                   |                               |                                   | 2                             | 0.00                              | 2                             | 0.00                              |  |  |
| 7  | P      | <i>Glycera tridactyla</i>         |                               |                                   | 4                             | 0.00                              | 2                             | 0.00                              | 6                             | 0.00                              |  |  |
| 8  | P      | <i>Glycinde gurjanovae</i>        |                               |                                   |                               |                                   | 1                             | 0.00                              | 1                             | 0.00                              |  |  |
| 9  | P      | <i>Linopherus paucibranchiata</i> |                               |                                   |                               |                                   | 1                             | 0.00                              | 1                             | 0.00                              |  |  |
| 10   | P      | <i>Lumbrineris</i> sp. 1          |                               |                                   | 1                             | 0.00                              |                               |                                   | 1                             | 0.00                              |  |  |
| 11   | P      | <i>Magelona</i> sp.               | 1                             | 0.00                              | 2                             | 0.00                              |                               |                                   | 3                             | 0.00                              |  |  |
| 12   | P      | <i>Mediomastus</i> sp.            | 3                             | 0.01                              | 3                             | 0.01                              | 11                            | 0.01                              | 17                            | 0.02                              |  |  |
| 13   | P      | <i>Notomastus</i> sp.             |                               |                                   |                               |                                   | 1                             | 0.00                              | 1                             | 0.00                              |  |  |
| 14   | P      | <i>Ophelina acuminata</i>         |                               |                                   |                               |                                   | 1                             | 0.00                              | 1                             | 0.00                              |  |  |
| 15   | P      | <i>Ophiodromus anguitifrons</i>   | 1                             | 0.00                              |                               |                                   | 1                             | 0.00                              | 2                             | 0.00                              |  |  |

P = Polychaeta, C = Crustacea, M = Mollusca, N = Nemertea, Sp = Sipuncula, Eh = Echiura, Cn = Cnidaria  
 Biomass = 0.00 g / 0.1m<sup>2</sup> : The specimen with total biomass less than 0.01 g / 0.1m<sup>2</sup>

**Appendix I (cont'd)** List of collected specimens at every sampling site in wet season

| Sampling point: P3      Sampling date: 29/08/2009 |        |                                  |                               |                                   |                               |                                   |                               |                                   |                               |                                   |  |  |
|---|--------|----------------------------------|-------------------------------|-----------------------------------|-------------------------------|-----------------------------------|-------------------------------|-----------------------------------|-------------------------------|-----------------------------------|--|--|
| No  | Groups | Species                          | 1                             |                                   | 2                             |                                   | 3                             |                                   | Total                         |                                   |  |  |
|   |        |                                  | Ind.<br>(/0.1m <sup>2</sup> ) | Wet wt.<br>(g/0.1m <sup>2</sup> ) | Ind.<br>(/0.1m <sup>2</sup> ) | Wet wt.<br>(g/0.1m <sup>2</sup> ) | Ind.<br>(/0.1m <sup>2</sup> ) | Wet wt.<br>(g/0.1m <sup>2</sup> ) | Ind.<br>(/0.3m <sup>2</sup> ) | Wet wt.<br>(g/0.3m <sup>2</sup> ) |  |  |
| 16  | P      | <i>Otopsis</i> sp.               | 2                             | 0.00                              | 1                             | 0.00                              | 3                             | 0.00                              | 6                             | 0.00                              |  |  |
| 17  | P      | <i>Paraprionospio pinnata</i>    |                               |                                   | 1                             | 0.00                              |                               |                                   | 1                             | 0.00                              |  |  |
| 18  | P      | <i>Poecilochaetus</i> sp. 1      |                               |                                   |                               |                                   | 1                             | 0.00                              | 1                             | 0.00                              |  |  |
| 19  | P      | <i>Prionospio malmgreni</i>      | 2                             | 0.00                              |                               |                                   | 2                             | 0.00                              | 4                             | 0.00                              |  |  |
| 20  | P      | <i>Rhynchospio</i> sp.           |                               |                                   | 1                             | 0.06                              |                               |                                   | 1                             | 0.06                              |  |  |
| 21  | P      | <i>Sternaspis sculata</i>        | 2                             | 0.02                              | 4                             | 0.02                              |                               |                                   | 6                             | 0.04                              |  |  |
| 22  | P      | <i>Tharyx</i> sp.                | 1                             | 0.00                              | 1                             | 0.00                              | 3                             | 0.00                              | 5                             | 0.00                              |  |  |
| 23  | C      | <i>Alpheus brevicristatus</i>    |                               |                                   |                               |                                   | 1                             | 0.02                              | 1                             | 0.02                              |  |  |
| 24  | C      | <i>Neoxenophthalmus obscurus</i> | 1                             | 0.02                              |                               |                                   |                               |                                   | 1                             | 0.02                              |  |  |
| 25  | C      | <i>Raphidopus ciliatus</i>       | 1                             | 0.19                              |                               |                                   |                               |                                   | 1                             | 0.19                              |  |  |
| 26  | C      | <i>Thalamita sima</i>            |                               |                                   |                               |                                   | 1                             | 0.01                              | 1                             | 0.01                              |  |  |
| 27  | M      | <i>Mactra ornata</i>             | 8                             | 0.26                              | 3                             | 0.05                              |                               |                                   | 11                            | 0.31                              |  |  |
| 28  | M      | <i>Nitidotellina minuta</i>      |                               |                                   | 1                             | 0.01                              | 2                             | 0.02                              | 3                             | 0.03                              |  |  |
| 29  | M      | <i>Saccella gordonis</i>         |                               |                                   |                               |                                   | 1                             | 0.03                              | 1                             | 0.03                              |  |  |
| 30  | M      | <i>Solen dunkerianus</i>         | 4                             | 0.15                              |                               |                                   |                               |                                   | 4                             | 0.15                              |  |  |

P = Polychaeta, C = Crustacea, M = Mollusca, N = Nemertea, Sp = Sipuncula, Eh = Echiura, Cn = Cnidaria  
 Biomass = 0.00 g / 0.1m<sup>2</sup> : The specimen with total biomass less than 0.01 g / 0.1m<sup>2</sup>



**Appendix I (cont'd)** List of collected specimens at every sampling site in wet season

|    |        | Sampling point: P3              |                               |                                   |                               |                                   |                               | Sampling date: 29/08/2009         |                               |                                   |      |  |  |
|----|--------|---------------------------------|-------------------------------|-----------------------------------|-------------------------------|-----------------------------------|-------------------------------|-----------------------------------|-------------------------------|-----------------------------------|------|--|--|
| No | Groups | Species                         | 1                             |                                   | 2                             |                                   | 3                             |                                   | Total                         |                                   |      |  |  |
|    |        |                                 | Ind.<br>(/0.1m <sup>2</sup> ) | Wet wt.<br>(g/0.1m <sup>2</sup> ) | Ind.<br>(/0.1m <sup>2</sup> ) | Wet wt.<br>(g/0.1m <sup>2</sup> ) | Ind.<br>(/0.1m <sup>2</sup> ) | Wet wt.<br>(g/0.1m <sup>2</sup> ) | Ind.<br>(/0.3m <sup>2</sup> ) | Wet wt.<br>(g/0.3m <sup>2</sup> ) |      |  |  |
| 31 | M      | <i>Tegillarca granosa</i>       |                               |                                   | 1                             | 0.05                              |                               |                                   |                               | 1                                 | 0.05 |  |  |
| 32 | N      | Nemertean spp.                  | 1                             | 0.00                              |                               |                                   | 2                             | 0.00                              |                               | 3                                 | 0.00 |  |  |
| 33 | Sp     | <i>Apionsoma trichocephalus</i> | 2                             | 0.01                              | 4                             | 0.01                              | 1                             | 0.00                              |                               | 7                                 | 0.02 |  |  |
| 34 | Eh     | <i>Thalassema sabinum</i>       | 3                             | 0.38                              | 4                             | 0.72                              | 13                            | 0.41                              |                               | 20                                | 1.51 |  |  |
| 35 | Cn     | <i>Metedwardsia akkeshi</i>     | 2                             | 0.43                              |                               |                                   |                               |                                   |                               | 2                                 | 0.43 |  |  |
|    |        |                                 |                               |                                   |                               |                                   |                               |                                   |                               |                                   |      |  |  |
|    | Total  |                                 | 39                            | 1.4726                            | 34                            | 1.0112                            | 53                            | 0.52                              |                               | 126                               | 3.01 |  |  |

P = Polychaeta, C = Crustacea, M = Mollusca, N = Nemertea, Sp = Sipuncula, Eh = Echiura, Cn = Cnidaria

Biomass = 0.00 g / 0.1 m<sup>2</sup> : The specimen with total biomass less than 0.01 g / 0.1 m<sup>2</sup>

**Appendix I (cont'd)** List of collected specimens at every sampling site in wet season

| Sampling point: P4      Sampling date: 29/08/2009 |        |                               |                               |                                   |                               |                                   |                               |                                   |                               |                                   |                               |                                   |  |
|---|--------|-------------------------------|-------------------------------|-----------------------------------|-------------------------------|-----------------------------------|-------------------------------|-----------------------------------|-------------------------------|-----------------------------------|-------------------------------|-----------------------------------|--|
| No  | Groups | Species                       | 1                             |                                   |                               | 2                                 |                               |                                   | 3                             |                                   |                               | Total                             |  |
|   |        |                               | Ind.<br>(/0.1m <sup>2</sup> ) | Wet wt.<br>(g/0.1m <sup>2</sup> ) | Ind.<br>(/0.1m <sup>2</sup> ) | Wet wt.<br>(g/0.1m <sup>2</sup> ) | Ind.<br>(/0.1m <sup>2</sup> ) | Wet wt.<br>(g/0.1m <sup>2</sup> ) | Ind.<br>(/0.1m <sup>2</sup> ) | Wet wt.<br>(g/0.1m <sup>2</sup> ) | Ind.<br>(/0.3m <sup>2</sup> ) | Wet wt.<br>(g/0.3m <sup>2</sup> ) |  |
| 1   | P      | <i>Aglaophamus dibranchis</i> |                               |                                   | 3                             | 0.00                              |                               | 2                                 | 0.00                          |                                   | 5                             | 0.00                              |  |
| 2   | P      | <i>Aglaophamus sinensis</i>   | 1                             | 0.01                              | 1                             | 0.02                              |                               | 1                                 | 0.00                          |                                   | 3                             | 0.03                              |  |
| 3   | P      | Aphroditidae spp              | 2                             | 0.03                              | 8                             | 0.10                              |                               | 1                                 | 0.02                          |                                   | 11                            | 0.16                              |  |
| 4   | P      | <i>Ceratonereis</i> sp. 1     | 1                             | 0.00                              |                               |                                   |                               |                                   |                               |                                   | 1                             | 0.00                              |  |
| 5   | P      | <i>Cossurella dimorpha</i>    | 1                             | 0.00                              | 1                             | 0.00                              |                               |                                   |                               |                                   | 2                             | 0.00                              |  |
| 6   | P      | <i>Glycera tridactyla</i>     | 2                             | 0.00                              | 3                             | 0.00                              |                               | 3                                 | 0.00                          |                                   | 8                             | 0.01                              |  |
| 7   | P      | <i>Harmothoe imbricata</i>    |                               |                                   |                               |                                   |                               | 2                                 | 0.02                          |                                   | 2                             | 0.02                              |  |
| 8   | P      | <i>Loimia bandera</i>         | 1                             | 0.00                              |                               |                                   |                               |                                   |                               |                                   | 1                             | 0.00                              |  |
| 9   | P      | <i>Magelona</i> sp.           |                               |                                   | 2                             | 0.00                              |                               |                                   |                               |                                   | 2                             | 0.00                              |  |
| 10  | P      | <i>Mediomastus</i> sp.        | 2                             | 0.00                              | 6                             | 0.01                              |                               | 3                                 | 0.01                          |                                   | 11                            | 0.02                              |  |
| 11  | P      | <i>Onuphis eremita</i>        | 3                             | 0.00                              |                               |                                   |                               |                                   |                               |                                   | 3                             | 0.00                              |  |
| 12  | P      | <i>Paraprionospio pinnata</i> |                               |                                   | 1                             | 0.00                              |                               |                                   |                               |                                   | 1                             | 0.00                              |  |
| 13  | P      | <i>Pectinaria conchilega</i>  |                               |                                   |                               |                                   |                               | 1                                 | 0.00                          |                                   | 1                             | 0.00                              |  |
| 14  | P      | <i>Poecilochaetus</i> sp. 1   | 1                             | 0.10                              |                               |                                   |                               |                                   |                               |                                   | 1                             | 0.10                              |  |
| 15  | P      | <i>Prionospio malmgreni</i>   |                               |                                   | 1                             | 0.00                              |                               |                                   |                               |                                   | 1                             | 0.00                              |  |

P = Polychaeta, C = Crustacea, M = Mollusca, N = Nemertea, Sp = Sipuncula, Eh = Echiura, Cn = Cnidaria  
 Biomass = 0.00 g / 0.1m<sup>2</sup> : The specimen with total biomass less than 0.01 g / 0.1m<sup>2</sup>

**Appendix I (cont'd)** List of collected specimens at every sampling site in wet season

| Sampling point: P4 |        |                                   |                               |                                   |                               |                                   |                               |                                   |                               |                                   |      |  |  | Sampling date: 29/08/2009 |  |  |  |
|--------------------|--------|-----------------------------------|-------------------------------|-----------------------------------|-------------------------------|-----------------------------------|-------------------------------|-----------------------------------|-------------------------------|-----------------------------------|------|--|--|---------------------------|--|--|--|
| No                 | Groups | Species                           | 1                             |                                   | 2                             |                                   | 3                             |                                   | Total                         |                                   |      |  |  |                           |  |  |  |
|                    |        |                                   | Ind.<br>(/0.1m <sup>2</sup> ) | Wet wt.<br>(g/0.1m <sup>2</sup> ) | Ind.<br>(/0.1m <sup>2</sup> ) | Wet wt.<br>(g/0.1m <sup>2</sup> ) | Ind.<br>(/0.1m <sup>2</sup> ) | Wet wt.<br>(g/0.1m <sup>2</sup> ) | Ind.<br>(/0.3m <sup>2</sup> ) | Wet wt.<br>(g/0.3m <sup>2</sup> ) |      |  |  |                           |  |  |  |
| 16                 | P      | <i>Schistomeringos rudolphi</i>   | 1                             | 0.00                              |                               |                                   |                               |                                   |                               | 1                                 | 0.00 |  |  |                           |  |  |  |
| 17                 | P      | <i>Sigambra hanaokai</i>          |                               |                                   |                               |                                   | 2                             | 0.00                              |                               | 2                                 | 0.00 |  |  |                           |  |  |  |
| 18                 | P      | <i>Sternaspis sculata</i>         |                               |                                   | 2                             | 0.01                              | 2                             | 0.01                              |                               | 4                                 | 0.01 |  |  |                           |  |  |  |
| 19                 | C      | <i>Alpheus</i> sp. 1              |                               |                                   |                               |                                   | 1                             | 0.04                              |                               | 1                                 | 0.04 |  |  |                           |  |  |  |
| 20                 | C      | <i>Callinassa japonica</i>        | 1                             | 0.01                              |                               |                                   |                               |                                   |                               | 1                                 | 0.01 |  |  |                           |  |  |  |
| 21                 | C      | <i>Neoxenophthalmus obscurus</i>  | 3                             | 0.73                              | 3                             | 0.52                              | 3                             | 0.80                              |                               | 9                                 | 2.04 |  |  |                           |  |  |  |
| 22                 | C      | <i>Tritodynamia longipropodum</i> |                               |                                   | 1                             | 0.05                              |                               |                                   |                               | 1                                 | 0.05 |  |  |                           |  |  |  |
| 23                 | C      | <i>Typhlocarcinus nudus</i>       |                               |                                   | 1                             | 0.03                              |                               |                                   |                               | 1                                 | 0.03 |  |  |                           |  |  |  |
| 24                 | C      | <i>Typhlocarcinus villosus</i>    |                               |                                   |                               |                                   | 2                             | 0.08                              |                               | 2                                 | 0.08 |  |  |                           |  |  |  |
| 25                 | M      | <i>Macoma praeurpta</i>           | 1                             | 0.22                              | 2                             | 0.87                              | 2                             | 0.39                              |                               | 5                                 | 1.47 |  |  |                           |  |  |  |
| 26                 | M      | <i>Mactra ornata</i>              |                               |                                   |                               |                                   | 33                            | 0.81                              |                               | 33                                | 0.81 |  |  |                           |  |  |  |
| 27                 | M      | <i>Nitidotellina minuta</i>       |                               |                                   | 2                             | 0.02                              |                               |                                   |                               | 2                                 | 0.02 |  |  |                           |  |  |  |
| 28                 | Sp     | <i>Apionsoma trichocephalus</i>   | 6                             | 0.01                              | 9                             | 0.01                              | 8                             | 0.04                              |                               | 23                                | 0.06 |  |  |                           |  |  |  |
| 29                 | N      | <i>Nemertean</i> spp.             |                               |                                   |                               |                                   | 1                             | 0.00                              |                               | 1                                 | 0.00 |  |  |                           |  |  |  |
| 30                 | Eh     | <i>Thalassema sabinum</i>         | 11                            | 0.87                              | 33                            | 1.50                              | 73                            | 3.88                              |                               | 117                               | 6.25 |  |  |                           |  |  |  |

P = Polychaeta, C = Crustacea, M = Mollusca, N = Nemertea, Sp = Sipuncula, Eh = Echiura, Cn = Cnidaria

Biomass = 0.00 g / 0.1m<sup>2</sup> : The specimen with total biomass less than 0.01 g / 0.1m<sup>2</sup>

**Appendix I (cont'd)** List of collected specimens at every sampling site in wet season

| Sampling point: P4 Sampling date: 29/08/2009 |        |                             |      |                                   |      |                                   |      |                                   |       |                                   |  |  |
|--|--------|-----------------------------|------|-----------------------------------|------|-----------------------------------|------|-----------------------------------|-------|-----------------------------------|--|--|
| No   | Groups | Species                     | 1    |                                   | 2    |                                   | 3    |                                   | Total |                                   |  |  |
|  |        |                             | Ind. | Wet wt.<br>(g/0.1m <sup>2</sup> ) | Ind. | Wet wt.<br>(g/0.1m <sup>2</sup> ) | Ind. | Wet wt.<br>(g/0.1m <sup>2</sup> ) | Ind.  | Wet wt.<br>(g/0.3m <sup>2</sup> ) |  |  |
| 31   | Cn     | <i>Metedwardsia akkeshi</i> |      |                                   |      |                                   | 2    | 0.18                              | 2     | 0.18                              |  |  |
|  |        |                             | 37   | 1.9813                            | 79   | 3.1329                            | 142  | 6.29                              | 258   | 11.41                             |  |  |
|  | Total  |                             |      |                                   |      |                                   |      |                                   |       |                                   |  |  |

P = Polychaeta, C = Crustacea, M = Mollusca, N = Nemertea, Sp = Sipuncula, Eh = Echiura, Cn = Cnidaria  
 Biomass = 0.00 g / 0.1m<sup>2</sup> : The specimen with total biomass less than 0.01 g / 0.1m<sup>2</sup>

**Appendix II**

*List of collected specimens at every sampling site in dry season*

|    |        | Sampling point: P1            |                               |                                   |                               |                                   |                               | Sampling date: 12/12/2009         |                               |                                   |      |  |  |
|----|--------|-------------------------------|-------------------------------|-----------------------------------|-------------------------------|-----------------------------------|-------------------------------|-----------------------------------|-------------------------------|-----------------------------------|------|--|--|
| No | Groups | Species                       | 1                             |                                   | 2                             |                                   | 3                             |                                   | Total                         |                                   |      |  |  |
|    |        |                               | Ind.<br>(/0.1m <sup>2</sup> ) | Wet wt.<br>(g/0.1m <sup>2</sup> ) | Ind.<br>(/0.1m <sup>2</sup> ) | Wet wt.<br>(g/0.1m <sup>2</sup> ) | Ind.<br>(/0.1m <sup>2</sup> ) | Wet wt.<br>(g/0.1m <sup>2</sup> ) | Ind.<br>(/0.3m <sup>2</sup> ) | Wet wt.<br>(g/0.3m <sup>2</sup> ) |      |  |  |
| 1  | P      | <i>Aglaophamus sinensis</i>   | 1                             | 0.01                              |                               |                                   |                               |                                   |                               | 1                                 | 0.01 |  |  |
| 2  | P      | <i>Amphictetis gunneri</i>    |                               |                                   | 2                             | 0.00                              |                               | 2                                 | 0.00                          | 4                                 | 0.00 |  |  |
| 3  | P      | <i>Chaetozone</i> sp.         | 1                             | 0.00                              |                               |                                   |                               |                                   |                               | 1                                 | 0.00 |  |  |
| 4  | P      | <i>Cirriformia</i> sp.        | 2                             | 0.01                              |                               |                                   |                               |                                   |                               | 2                                 | 0.01 |  |  |
| 5  | P      | <i>Decamastus</i> sp.         | 2                             | 0.00                              |                               |                                   |                               |                                   |                               | 2                                 | 0.00 |  |  |
| 6  | P      | <i>Glycera alba</i>           |                               |                                   | 1                             | 0.00                              |                               | 2                                 | 0.00                          | 3                                 | 0.00 |  |  |
| 7  | P      | <i>Glycinde gurjanovae</i>    | 8                             | 0.00                              | 1                             | 0.00                              |                               | 5                                 | 0.00                          | 14                                | 0.01 |  |  |
| 8  | P      | <i>Loimia bandera</i>         |                               |                                   |                               |                                   |                               | 2                                 | 0.02                          | 2                                 | 0.02 |  |  |
| 9  | P      | <i>Magelona</i> sp.           | 50                            | 0.04                              | 14                            | 0.01                              |                               | 49                                | 0.03                          | 113                               | 0.08 |  |  |
| 10 | P      | <i>Mediomastus</i> sp.        | 4                             | 0.00                              |                               |                                   |                               |                                   |                               | 4                                 | 0.00 |  |  |
| 11 | P      | <i>Notomastus</i> sp.         |                               |                                   |                               |                                   |                               | 2                                 | 0.00                          | 2                                 | 0.00 |  |  |
| 12 | P      | <i>Onuphis eremita</i>        | 1                             | 0.00                              |                               |                                   |                               |                                   |                               | 1                                 | 0.00 |  |  |
| 13 | P      | <i>Owenia fusiformis</i>      |                               |                                   |                               |                                   |                               | 1                                 | 0.01                          | 1                                 | 0.01 |  |  |
| 14 | P      | <i>Paraprionospio pinnata</i> | 33                            | 0.04                              | 6                             | 0.01                              |                               | 9                                 | 0.02                          | 48                                | 0.07 |  |  |
| 15 | P      | <i>Pectinaria conchilega</i>  |                               |                                   |                               |                                   |                               | 1                                 | 0.01                          | 1                                 | 0.01 |  |  |

P = Polychaeta, C = Crustacea, M = Mollusca, N = Nemertea, Cn = Cnidaria

Biomass = 0.00 g / 0.1m<sup>2</sup> : The specimen with total biomass less than 0.01 g / 0.1m<sup>2</sup>

**Appendix II (cont'd) List of collected specimens at every sampling site in dry season**

| Sampling point: P1 |        |                               |                               |                                   |                               |                                   |                               |                                   |                               |                                   |      | Sampling date: 12/12/2009 |  |  |  |  |  |
|--------------------|--------|-------------------------------|-------------------------------|-----------------------------------|-------------------------------|-----------------------------------|-------------------------------|-----------------------------------|-------------------------------|-----------------------------------|------|---------------------------|--|--|--|--|--|
| No                 | Groups | Species                       | 1                             |                                   | 2                             |                                   | 3                             |                                   | Total                         |                                   |      |                           |  |  |  |  |  |
|                    |        |                               | Ind.<br>(/0.1m <sup>2</sup> ) | Wet wt.<br>(g/0.1m <sup>2</sup> ) | Ind.<br>(/0.1m <sup>2</sup> ) | Wet wt.<br>(g/0.1m <sup>2</sup> ) | Ind.<br>(/0.1m <sup>2</sup> ) | Wet wt.<br>(g/0.1m <sup>2</sup> ) | Ind.<br>(/0.3m <sup>2</sup> ) | Wet wt.<br>(g/0.3m <sup>2</sup> ) |      |                           |  |  |  |  |  |
| 16                 | P      | <i>Phyllococe</i> sp. 1       | 1                             | 0.00                              |                               |                                   |                               |                                   |                               | 1                                 | 0.00 |                           |  |  |  |  |  |
| 17                 | P      | <i>Poecilochaetus</i> sp. 1   | 3                             | 0.00                              |                               |                                   |                               |                                   |                               | 3                                 | 0.00 |                           |  |  |  |  |  |
| 18                 | P      | <i>Prionospio malmgreni</i>   | 1                             | 0.00                              | 1                             | 0.00                              | 1                             | 0.00                              | 3                             | 3                                 | 0.01 |                           |  |  |  |  |  |
| 19                 | P      | <i>Scolecopsis squamata</i>   | 1                             | 0.00                              |                               |                                   |                               |                                   |                               | 1                                 | 0.00 |                           |  |  |  |  |  |
| 20                 | P      | <i>Sternaspis sculata</i>     |                               |                                   | 1                             | 0.02                              |                               |                                   |                               | 1                                 | 0.02 |                           |  |  |  |  |  |
| 21                 | P      | <i>Tharyx</i> sp.             | 2                             | 0.01                              |                               |                                   |                               |                                   |                               | 2                                 | 0.01 |                           |  |  |  |  |  |
| 22                 | N      | Nemertean spp.                |                               |                                   | 3                             | 0.06                              | 3                             | 0.02                              | 6                             | 6                                 | 0.08 |                           |  |  |  |  |  |
| 23                 | M      | <i>Nitidotellina iridella</i> |                               |                                   | 3                             | 0.09                              | 1                             | 0.01                              | 4                             | 4                                 | 0.09 |                           |  |  |  |  |  |
| 24                 | M      | <i>Paphia exarata</i>         |                               |                                   |                               |                                   | 1                             | 0.21                              | 1                             | 1                                 | 0.21 |                           |  |  |  |  |  |
| 25                 | Cn     | <i>Cerianthus filiformis</i>  | 1                             | 0.00                              |                               |                                   |                               |                                   |                               | 1                                 | 0.00 |                           |  |  |  |  |  |
| 26                 | C      | Amphipod spp.                 | 16                            | 0.01                              | 3                             | 0.00                              | 5                             | 0.00                              | 24                            | 24                                | 0.01 |                           |  |  |  |  |  |
| 27                 | C      | <i>Apseudes</i> sp.           |                               |                                   |                               |                                   | 1                             | 0.00                              | 1                             | 1                                 | 0.00 |                           |  |  |  |  |  |
| 28                 | C      | <i>Trachypenaeus</i> sp.      |                               |                                   | 1                             | 0.02                              |                               |                                   | 1                             | 1                                 | 0.02 |                           |  |  |  |  |  |
| 29                 | C      | Unidentified juvenile shrimp  | 1                             | 0.02                              |                               |                                   |                               |                                   | 1                             | 1                                 | 0.02 |                           |  |  |  |  |  |
| Total              |        |                               | 128                           | 0.1554                            | 36                            | 0.2123                            | 85                            | 0.3211                            | 249                           | 249                               | 0.69 |                           |  |  |  |  |  |

P = Polychaeta, C = Crustacea, M = Mollusca, N = Nemertea, Cn = Cnidaria  
 Biomass = 0.00 g / 0.1m<sup>2</sup> : The specimen with total biomass less than 0.01 g / 0.1m<sup>2</sup>

**Appendix II (cont'd) List of collected specimens at every sampling site in dry season**

|    |        | Sampling point: P2                |                               |                                   |                               |                                   |                               | Sampling date: 12/12/2009         |                               |                                   |      |  |  |
|----|--------|-----------------------------------|-------------------------------|-----------------------------------|-------------------------------|-----------------------------------|-------------------------------|-----------------------------------|-------------------------------|-----------------------------------|------|--|--|
| No | Groups | Species                           | 1                             |                                   | 2                             |                                   | 3                             |                                   | Total                         |                                   |      |  |  |
|    |        |                                   | Ind.<br>(/0.1m <sup>2</sup> ) | Wet wt.<br>(g/0.1m <sup>2</sup> ) | Ind.<br>(/0.1m <sup>2</sup> ) | Wet wt.<br>(g/0.1m <sup>2</sup> ) | Ind.<br>(/0.1m <sup>2</sup> ) | Wet wt.<br>(g/0.1m <sup>2</sup> ) | Ind.<br>(/0.3m <sup>2</sup> ) | Wet wt.<br>(g/0.3m <sup>2</sup> ) |      |  |  |
| 1  | P      | <i>Amphicteis gunneri</i>         |                               |                                   |                               |                                   | 2                             | 0.00                              |                               | 2                                 | 0.00 |  |  |
| 2  | P      | <i>Cirriformia</i> sp.            | 1                             | 0.01                              | 1                             | 0.00                              | 3                             | 0.01                              |                               | 5                                 | 0.01 |  |  |
| 3  | P      | <i>Decamastus</i> sp.             | 2                             | 0.00                              |                               |                                   |                               |                                   |                               | 2                                 | 0.00 |  |  |
| 4  | P      | <i>Euchymene oerstedii</i>        |                               |                                   |                               |                                   | 1                             | 0.00                              |                               | 1                                 | 0.00 |  |  |
| 5  | P      | <i>Glycera tridactyla</i>         |                               |                                   | 3                             | 0.01                              | 1                             | 0.00                              |                               | 4                                 | 0.01 |  |  |
| 6  | P      | <i>Glycinde gurjanovae</i>        | 6                             | 0.00                              | 4                             | 0.00                              |                               |                                   |                               | 10                                | 0.01 |  |  |
| 7  | P      | <i>Linopherus paucibranchiata</i> |                               |                                   |                               |                                   | 1                             | 0.01                              |                               | 1                                 | 0.01 |  |  |
| 8  | P      | <i>Loimia bandera</i>             |                               |                                   | 4                             | 0.04                              |                               |                                   |                               | 4                                 | 0.04 |  |  |
| 9  | P      | <i>Loimia</i> sp.                 | 1                             | 0.01                              |                               |                                   |                               |                                   |                               | 1                                 | 0.01 |  |  |
| 10 | P      | <i>Lumbrineris longifolia</i>     | 4                             | 0.00                              | 1                             | 0.00                              | 2                             | 0.00                              |                               | 7                                 | 0.01 |  |  |
| 11 | P      | <i>Magelona</i> sp.               | 24                            | 0.01                              | 23                            | 0.01                              | 11                            | 0.00                              |                               | 58                                | 0.03 |  |  |
| 12 | P      | <i>Mediomastus</i> sp.            | 49                            | 0.04                              | 9                             | 0.01                              | 24                            | 0.02                              |                               | 82                                | 0.07 |  |  |
| 13 | P      | <i>Notomastus</i> sp.             | 1                             | 0.00                              |                               |                                   |                               |                                   |                               | 1                                 | 0.00 |  |  |
| 14 | P      | <i>Ophelina acuminata</i>         | 1                             | 0.00                              |                               |                                   |                               |                                   |                               | 1                                 | 0.00 |  |  |
| 15 | P      | <i>Ophiodromus angutifrons</i>    |                               |                                   |                               |                                   | 1                             | 0.00                              |                               | 1                                 | 0.00 |  |  |

P = Polychaeta, C = Crustacea, M = Mollusca, N = Nemeritea, Sp = Sipuncula, Eh = Echiura, Ec = Echinodermata, Pl = Platyhelminthes  
 Biomass = 0.00 g / 0.1m<sup>2</sup> : The specimen with total biomass less than 0.01 g / 0.1m<sup>2</sup>

**Appendix II (cont'd) List of collected specimens at every sampling site in dry season**

| Sampling point: P2 |        |                                 |                               |                                   |                               |                                   |                               |                                   |                               |                                   |      | Sampling date: 12/12/2009 |  |  |  |  |  |
|--------------------|--------|---------------------------------|-------------------------------|-----------------------------------|-------------------------------|-----------------------------------|-------------------------------|-----------------------------------|-------------------------------|-----------------------------------|------|---------------------------|--|--|--|--|--|
| No                 | Groups | Species                         | 1                             |                                   | 2                             |                                   | 3                             |                                   | Total                         |                                   |      |                           |  |  |  |  |  |
|                    |        |                                 | Ind.<br>(/0.1m <sup>2</sup> ) | Wet wt.<br>(g/0.1m <sup>2</sup> ) | Ind.<br>(/0.1m <sup>2</sup> ) | Wet wt.<br>(g/0.1m <sup>2</sup> ) | Ind.<br>(/0.1m <sup>2</sup> ) | Wet wt.<br>(g/0.1m <sup>2</sup> ) | Ind.<br>(/0.3m <sup>2</sup> ) | Wet wt.<br>(g/0.3m <sup>2</sup> ) |      |                           |  |  |  |  |  |
| 16                 | P      | <i>Paraonella</i> sp.           | 1                             | 0.00                              |                               |                                   |                               |                                   |                               | 1                                 | 0.00 |                           |  |  |  |  |  |
| 17                 | P      | <i>Paraprionospio pinnata</i>   | 4                             | 0.00                              | 3                             | 0.00                              | 2                             | 0.00                              | 9                             | 0.01                              | 0.01 |                           |  |  |  |  |  |
| 18                 | P      | <i>Pista</i> sp.                |                               |                                   |                               |                                   | 2                             | 0.01                              | 2                             | 0.01                              | 0.01 |                           |  |  |  |  |  |
| 19                 | P      | <i>Prionospio malmgreni</i>     | 2                             | 0.00                              | 7                             | 0.01                              |                               |                                   | 9                             | 0.01                              | 0.01 |                           |  |  |  |  |  |
| 20                 | P      | <i>Rhynchospio</i> sp.          | 1                             | 0.01                              |                               |                                   |                               |                                   | 1                             | 0.01                              | 0.01 |                           |  |  |  |  |  |
| 21                 | P      | <i>Sternaspis sculata</i>       |                               |                                   |                               |                                   | 1                             | 0.01                              | 1                             | 0.01                              | 0.01 |                           |  |  |  |  |  |
| 22                 | P      | <i>Terebellides stroemii</i>    |                               |                                   | 1                             | 0.00                              |                               |                                   | 1                             | 0.00                              | 0.00 |                           |  |  |  |  |  |
| 23                 | P      | <i>Tharyx</i> sp.               | 2                             | 0.00                              | 2                             | 0.00                              |                               |                                   | 4                             | 0.00                              | 0.00 |                           |  |  |  |  |  |
| 24                 | Sp     | <i>Apionsoma trichocephalus</i> |                               |                                   | 1                             | 0.00                              |                               |                                   | 1                             | 0.00                              | 0.00 |                           |  |  |  |  |  |
| 25                 | Pl     | Platyhelminthes spp.            |                               |                                   | 1                             | 0.00                              |                               |                                   | 1                             | 0.00                              | 0.00 |                           |  |  |  |  |  |
| 26                 | N      | Nemertean spp.                  | 2                             | 0.10                              | 2                             | 0.15                              | 2                             | 0.00                              | 6                             | 0.25                              | 0.25 |                           |  |  |  |  |  |
| 27                 | M      | <i>Macoma praeurpta</i>         | 1                             | 0.27                              |                               |                                   | 1                             | 0.75                              | 2                             | 1.02                              | 1.02 |                           |  |  |  |  |  |
| 28                 | M      | <i>Nitidotellina iridella</i>   | 1                             | 0.03                              | 1                             | 0.09                              |                               |                                   | 2                             | 0.12                              | 0.12 |                           |  |  |  |  |  |
| 29                 | M      | <i>Paphia undulata</i>          |                               |                                   | 1                             | 1.71                              |                               |                                   | 1                             | 1.71                              | 1.71 |                           |  |  |  |  |  |
| 30                 | M      | <i>Solen dunkerianus</i>        |                               |                                   | 1                             | 0.00                              |                               |                                   | 1                             | 0.00                              | 0.00 |                           |  |  |  |  |  |

P = Polychaeta, C = Crustacea, M = Mollusca, N = Nemertea, Sp = Sipuncula, Eh = Echiura, Ec = Echinodermata, Pl = Platyhelminthes  
 Biomass = 0.00 g / 0.1 m<sup>2</sup> : The specimen with total biomass less than 0.01 g / 0.1 m<sup>2</sup>



**Appendix II (cont'd) List of collected specimens at every sampling site in dry season**

| Sampling point: P2 |        |                             |                               |                                   |                               |                                   |                               |                                   |                               |                                   |   | Sampling date: 12/12/2009 |  |  |  |  |  |
|--------------------|--------|-----------------------------|-------------------------------|-----------------------------------|-------------------------------|-----------------------------------|-------------------------------|-----------------------------------|-------------------------------|-----------------------------------|---|---------------------------|--|--|--|--|--|
| No                 | Groups | Species                     | 1                             |                                   | 2                             |                                   | 3                             |                                   | Total                         |                                   |   |                           |  |  |  |  |  |
|                    |        |                             | Ind.<br>(/0.1m <sup>2</sup> ) | Wet wt.<br>(g/0.1m <sup>2</sup> ) | Ind.<br>(/0.1m <sup>2</sup> ) | Wet wt.<br>(g/0.1m <sup>2</sup> ) | Ind.<br>(/0.1m <sup>2</sup> ) | Wet wt.<br>(g/0.1m <sup>2</sup> ) | Ind.<br>(/0.3m <sup>2</sup> ) | Wet wt.<br>(g/0.3m <sup>2</sup> ) |   |                           |  |  |  |  |  |
| 31                 | Eh     | <i>Thalassema sabinum</i>   |                               |                                   | 2                             | 0.05                              |                               |                                   |                               |                                   | 2 | 0.05                      |  |  |  |  |  |
| 32                 | Ec     | <i>Protankyra bidentata</i> |                               |                                   |                               |                                   |                               | 1                                 | 0.13                          |                                   | 1 | 0.13                      |  |  |  |  |  |
| 33                 | C      | <i>Alpheus</i> sp. 1        | 1                             | 0.02                              |                               |                                   |                               |                                   |                               |                                   | 1 | 0.02                      |  |  |  |  |  |
| 34                 | C      | Amphipod spp.               | 1                             | 0.00                              |                               |                                   |                               | 1                                 | 0.00                          |                                   | 2 | 0.00                      |  |  |  |  |  |
| 35                 | C      | <i>Raphidopus ciliatus</i>  | 1                             | 0.13                              |                               |                                   |                               |                                   |                               |                                   | 1 | 0.13                      |  |  |  |  |  |
|                    |        |                             |                               |                                   |                               |                                   |                               |                                   |                               |                                   |   |                           |  |  |  |  |  |
|                    | Total  |                             | 106                           | 0.6446                            | 67                            | 2.1047                            | 56                            | 0.95                              | 229                           | 3.70                              |   |                           |  |  |  |  |  |

P = Polychaeta, C = Crustacea, M = Mollusca, N = Nemertea, Sp = Sipuncula, Eh = Echiura, Ec = Echinodermata, Pl = Platyhelminthes  
 Biomass = 0.00 g / 0.1m<sup>2</sup> : The specimen with total biomass less than 0.01 g / 0.1m<sup>2</sup>

**Appendix II (cont'd) List of collected specimens at every sampling site in dry season**

|    |        | Sampling point: P3            |                               |                                   |                               |                                   |                               | Sampling date: 12/12/2009         |                               |                                   |      |  |  |
|----|--------|-------------------------------|-------------------------------|-----------------------------------|-------------------------------|-----------------------------------|-------------------------------|-----------------------------------|-------------------------------|-----------------------------------|------|--|--|
| No | Groups | Species                       | 1                             |                                   | 2                             |                                   | 3                             |                                   | Total                         |                                   |      |  |  |
|    |        |                               | Ind.<br>(/0.1m <sup>2</sup> ) | Wet wt.<br>(g/0.1m <sup>2</sup> ) | Ind.<br>(/0.1m <sup>2</sup> ) | Wet wt.<br>(g/0.1m <sup>2</sup> ) | Ind.<br>(/0.1m <sup>2</sup> ) | Wet wt.<br>(g/0.1m <sup>2</sup> ) | Ind.<br>(/0.3m <sup>2</sup> ) | Wet wt.<br>(g/0.3m <sup>2</sup> ) |      |  |  |
| 1  | P      | <i>Aglaophamus dibranchis</i> |                               |                                   |                               |                                   | 2                             | 0.00                              |                               | 2                                 | 0.00 |  |  |
| 2  | P      | <i>Amphicteis gunneri</i>     |                               |                                   | 1                             | 0.00                              |                               |                                   |                               | 1                                 | 0.00 |  |  |
| 3  | P      | <i>Cirriformia</i> sp.        | 1                             | 0.00                              |                               |                                   |                               |                                   |                               | 1                                 | 0.00 |  |  |
| 4  | P      | <i>Cossurella dimorpha</i>    |                               |                                   | 1                             | 0.00                              |                               |                                   |                               | 1                                 | 0.00 |  |  |
| 5  | P      | <i>Decamastus</i> sp.         |                               |                                   | 3                             | 0.00                              |                               |                                   |                               | 3                                 | 0.00 |  |  |
| 6  | P      | <i>Euchymene oerstedii</i>    | 1                             | 0.00                              |                               |                                   |                               |                                   |                               | 1                                 | 0.00 |  |  |
| 7  | P      | <i>Glycera alba</i>           |                               |                                   |                               |                                   | 3                             | 0.02                              |                               | 3                                 | 0.02 |  |  |
| 8  | P      | <i>Glycera tridactyla</i>     | 1                             | 0.00                              | 2                             | 0.01                              |                               |                                   |                               | 3                                 | 0.01 |  |  |
| 9  | P      | <i>Glycinde gurjanovae</i>    | 1                             | 0.00                              |                               |                                   | 1                             | 0.01                              |                               | 2                                 | 0.01 |  |  |
| 10 | P      | <i>Harmothoe imbricata</i>    |                               |                                   | 1                             | 0.00                              |                               |                                   |                               | 1                                 | 0.00 |  |  |
| 11 | P      | <i>Loimia</i> sp.             |                               |                                   | 2                             | 0.02                              |                               |                                   |                               | 2                                 | 0.02 |  |  |
| 12 | P      | <i>Magelona</i> sp.           | 5                             | 0.00                              |                               |                                   |                               |                                   |                               | 5                                 | 0.00 |  |  |
| 13 | P      | <i>Mediomastus</i> sp.        | 19                            | 0.01                              | 48                            | 0.04                              | 27                            | 0.03                              |                               | 94                                | 0.09 |  |  |
| 14 | P      | <i>Notomastus</i> sp.         | 1                             | 0.00                              |                               |                                   |                               |                                   |                               | 1                                 | 0.00 |  |  |
| 15 | P      | <i>Onuphis eremita</i>        |                               |                                   | 1                             | 0.01                              |                               |                                   |                               | 1                                 | 0.01 |  |  |

P = Polychaeta, C = Crustacea, M = Mollusca, N = Nemertea, Sp = Sipuncula, Eh = Echiura, Ec = Echinodermata, Cn = Cnidaria  
 Biomass = 0.00 g / 0.1m<sup>2</sup> : The specimen with total biomass less than 0.01 g / 0.1m<sup>2</sup>

**Appendix II (cont'd) List of collected specimens at every sampling site in dry season**

|    |        | Sampling point: P3              |                       |                        |                       |                        |                       | Sampling date: 12/12/2009 |                       |                        |      |  |  |
|----|--------|---------------------------------|-----------------------|------------------------|-----------------------|------------------------|-----------------------|---------------------------|-----------------------|------------------------|------|--|--|
| No | Groups | Species                         | 1                     |                        | 2                     |                        | 3                     |                           | Total                 |                        |      |  |  |
|    |        |                                 | Ind.                  | Wet wt.                | Ind.                  | Wet wt.                | Ind.                  | Wet wt.                   | Ind.                  | Wet wt.                |      |  |  |
|    |        |                                 | (/0.1m <sup>2</sup> ) | (g/0.1m <sup>2</sup> ) | (/0.1m <sup>2</sup> ) | (g/0.1m <sup>2</sup> ) | (/0.1m <sup>2</sup> ) | (g/0.1m <sup>2</sup> )    | (/0.3m <sup>2</sup> ) | (g/0.3m <sup>2</sup> ) |      |  |  |
| 16 | P      | <i>Ophiodromus angutifrons</i>  | 1                     | 0.00                   |                       |                        |                       |                           |                       | 1                      | 0.00 |  |  |
| 17 | P      | <i>Parapriionospio pinnata</i>  | 1                     | 0.00                   |                       |                        |                       |                           |                       | 1                      | 0.00 |  |  |
| 18 | P      | <i>Pectinaria conchilega</i>    |                       |                        | 2                     | 0.08                   | 2                     | 0.07                      | 4                     | 0.15                   |      |  |  |
| 19 | P      | <i>Sigambra hanaokai</i>        | 2                     | 0.00                   | 1                     | 0.00                   |                       |                           | 3                     | 0.00                   |      |  |  |
| 20 | P      | <i>Sternaspis sculata</i>       |                       |                        |                       |                        | 1                     | 0.01                      | 1                     | 0.01                   |      |  |  |
| 21 | P      | <i>Terebellides stroemii</i>    | 1                     | 0.00                   |                       |                        |                       |                           | 1                     | 0.00                   |      |  |  |
| 22 | Sp     | <i>Apionsoma trichocephalus</i> | 10                    | 0.03                   | 7                     | 0.03                   | 3                     | 0.01                      | 20                    | 0.07                   |      |  |  |
| 23 | N      | Nemertean spp.                  |                       |                        |                       |                        | 4                     | 0.01                      | 4                     | 0.01                   |      |  |  |
| 24 | M      | <i>Modiolus plicatus</i>        |                       |                        | 1                     | 0.58                   |                       |                           | 1                     | 0.58                   |      |  |  |
| 25 | M      | <i>Paphia undulata</i>          | 1                     | 0.39                   |                       |                        |                       |                           | 1                     | 0.39                   |      |  |  |
| 26 | M      | <i>Sinum incisum</i>            |                       |                        | 1                     | 0.48                   |                       |                           | 1                     | 0.48                   |      |  |  |
| 27 | M      | <i>Solen dunkerianus</i>        |                       |                        | 2                     | 0.31                   |                       |                           | 2                     | 0.31                   |      |  |  |
| 28 | Eh     | <i>Thalassema sabinum</i>       |                       |                        | 1                     | 0.33                   |                       |                           | 1                     | 0.33                   |      |  |  |
| 29 | Ec     | <i>Amphioplus laevis</i>        | 2                     | 0.01                   | 3                     | 0.01                   |                       |                           | 5                     | 0.01                   |      |  |  |
| 30 | Ec     | <i>Amphioplus lucidus</i>       | 1                     | 0.02                   |                       |                        | 3                     | 0.04                      | 4                     | 0.05                   |      |  |  |

P = Polychaeta, C = Crustacea, M = Mollusca, N = Nemertea, Sp = Sipuncula, Eh = Echiura, Ec = Echinodermata, Cn = Cnidaria  
 Biomass = 0.00 g / 0.1 m<sup>2</sup> : The specimen with total biomass less than 0.01 g / 0.1 m<sup>2</sup>

**Appendix II (cont'd) List of collected specimens at every sampling site in dry season**

| Sampling point: P3 |        |                                  |                               |                                   |                               |                                   |                               |                                   |                               |                                   |     | Sampling date: 12/12/2009 |  |  |  |  |  |
|--------------------|--------|----------------------------------|-------------------------------|-----------------------------------|-------------------------------|-----------------------------------|-------------------------------|-----------------------------------|-------------------------------|-----------------------------------|-----|---------------------------|--|--|--|--|--|
| No                 | Groups | Species                          | 1                             |                                   | 2                             |                                   | 3                             |                                   | Total                         |                                   |     |                           |  |  |  |  |  |
|                    |        |                                  | Ind.<br>(/0.1m <sup>2</sup> ) | Wet wt.<br>(g/0.1m <sup>2</sup> ) | Ind.<br>(/0.1m <sup>2</sup> ) | Wet wt.<br>(g/0.1m <sup>2</sup> ) | Ind.<br>(/0.1m <sup>2</sup> ) | Wet wt.<br>(g/0.1m <sup>2</sup> ) | Ind.<br>(/0.3m <sup>2</sup> ) | Wet wt.<br>(g/0.3m <sup>2</sup> ) |     |                           |  |  |  |  |  |
| 31                 | Ec     | <i>Ophiocnemis marmorata</i>     |                               |                                   |                               |                                   | 1                             | 0.03                              |                               |                                   | 1   | 0.03                      |  |  |  |  |  |
| 32                 | Ec     | <i>Protankyra bidentata</i>      |                               |                                   | 2                             | 0.09                              |                               |                                   |                               |                                   | 2   | 0.09                      |  |  |  |  |  |
| 33                 | Cn     | <i>Metedwardsia akkeshi</i>      |                               |                                   | 4                             | 0.74                              | 3                             | 1.60                              |                               |                                   | 7   | 2.34                      |  |  |  |  |  |
| 34                 | C      | <i>Callianassa japonica</i>      | 1                             | 0.04                              |                               |                                   |                               |                                   |                               |                                   | 1   | 0.04                      |  |  |  |  |  |
| 35                 | C      | <i>Eucrete crenata</i>           |                               |                                   | 1                             | 0.03                              |                               |                                   |                               |                                   | 1   | 0.03                      |  |  |  |  |  |
| 36                 | C      | <i>Neoxenophthalmus obscurus</i> |                               |                                   | 5                             | 0.21                              | 1                             | 0.07                              |                               |                                   | 6   | 0.27                      |  |  |  |  |  |
| 37                 | C      | <i>Raphidopus ciliatus</i>       |                               |                                   | 1                             | 0.06                              | 1                             | 0.08                              |                               |                                   | 2   | 0.13                      |  |  |  |  |  |
| 38                 | C      | <i>Typhlocarcinus nudus</i>      |                               |                                   | 1                             | 0.06                              |                               |                                   |                               |                                   | 1   | 0.06                      |  |  |  |  |  |
| 39                 | C      | <i>Typhlocarcinus villosus</i>   | 1                             | 0.03                              | 1                             | 0.10                              | 1                             | 0.05                              |                               |                                   | 3   | 0.17                      |  |  |  |  |  |
|                    | Total  |                                  | 50                            | 0.5442                            | 92                            | 3.1739                            | 53                            | 2.0057                            |                               |                                   | 195 | 5.72                      |  |  |  |  |  |

P = Polychaeta, C = Crustacea, M = Mollusca, N = Nemertea, Sp = Sipuncula, Eh = Echiura, Ec = Echinodermata, Cn = Cnidaria

Biomass = 0.00 g / 0.1m<sup>2</sup> : The specimen with total biomass less than 0.01 g / 0.1m<sup>2</sup>

**Appendix II (cont'd) List of collected specimens at every sampling site in dry season**

|    |        | Sampling point: P4              |                               |                                   |                               |                                   |                               | Sampling date: 12/12/2009         |                               |                                   |      |  |  |
|----|--------|---------------------------------|-------------------------------|-----------------------------------|-------------------------------|-----------------------------------|-------------------------------|-----------------------------------|-------------------------------|-----------------------------------|------|--|--|
| No | Groups | Species                         | 1                             |                                   | 2                             |                                   | 3                             |                                   | Total                         |                                   |      |  |  |
|    |        |                                 | Ind.<br>(/0.1m <sup>2</sup> ) | Wet wt.<br>(g/0.1m <sup>2</sup> ) | Ind.<br>(/0.1m <sup>2</sup> ) | Wet wt.<br>(g/0.1m <sup>2</sup> ) | Ind.<br>(/0.1m <sup>2</sup> ) | Wet wt.<br>(g/0.1m <sup>2</sup> ) | Ind.<br>(/0.3m <sup>2</sup> ) | Wet wt.<br>(g/0.3m <sup>2</sup> ) |      |  |  |
| 1  | P      | <i>Aglaophamus dibranchis</i>   | 1                             | 0.00                              |                               |                                   |                               |                                   |                               | 1                                 | 0.00 |  |  |
| 2  | P      | <i>Aglaophamus sinensis</i>     | 1                             | 0.01                              | 2                             | 0.01                              | 1                             | 0.01                              |                               | 4                                 | 0.02 |  |  |
| 3  | P      | <i>Amphicteis gunneri</i>       | 1                             | 0.00                              |                               |                                   |                               |                                   |                               | 1                                 | 0.00 |  |  |
| 4  | P      | <i>Chaetozone sp.</i>           | 1                             | 0.00                              |                               |                                   |                               |                                   |                               | 1                                 | 0.00 |  |  |
| 5  | P      | <i>Cossurella dimorpha</i>      | 1                             | 0.00                              |                               |                                   | 1                             | 0.00                              |                               | 2                                 | 0.00 |  |  |
| 6  | P      | <i>Euchymene oerstedii</i>      | 2                             | 0.01                              |                               |                                   |                               |                                   |                               | 2                                 | 0.01 |  |  |
| 7  | P      | <i>Glycera tridactyla</i>       | 2                             | 0.01                              |                               |                                   | 3                             | 0.03                              |                               | 5                                 | 0.04 |  |  |
| 8  | P      | <i>Harmothoe imbricata</i>      | 3                             | 0.01                              | 6                             | 0.21                              | 3                             | 0.01                              |                               | 12                                | 0.23 |  |  |
| 9  | P      | <i>Magelona sp.</i>             |                               |                                   |                               |                                   | 1                             | 0.00                              |                               | 1                                 | 0.00 |  |  |
| 10 | P      | <i>Mediomastus sp.</i>          | 27                            | 0.03                              | 30                            | 0.03                              | 28                            | 0.04                              |                               | 85                                | 0.09 |  |  |
| 11 | P      | <i>Notomastus sp.</i>           |                               |                                   |                               |                                   | 1                             | 0.00                              |                               | 1                                 | 0.00 |  |  |
| 12 | P      | <i>Ophelina acuminata</i>       |                               |                                   |                               |                                   | 1                             | 0.04                              |                               | 1                                 | 0.04 |  |  |
| 13 | P      | <i>Ophiodromus anguitifrons</i> |                               |                                   | 1                             | 0.00                              | 3                             | 0.00                              |                               | 4                                 | 0.01 |  |  |
| 14 | P      | <i>Paralacydonia paradox</i>    |                               |                                   |                               |                                   | 1                             | 0.00                              |                               | 1                                 | 0.00 |  |  |
| 15 | P      | <i>Paraprionospio pinnata</i>   |                               |                                   | 1                             | 0.00                              |                               |                                   |                               | 1                                 | 0.00 |  |  |

P = Polychaeta, C = Crustacea, M = Mollusca, N = Nemertea, Sp = Sipuncula, Eh = Echiura, Ec = Echinodermata  
 Biomass = 0.00 g / 0.1m<sup>2</sup> : The specimen with total biomass less than 0.01 g / 0.1m<sup>2</sup>

**Appendix II (cont'd) List of collected specimens at every sampling site in dry season**

|    |        | Sampling point: P4              |                       |                        |                       |                        |                       | Sampling date: 12/12/2009 |                       |                        |  |  |  |
|----|--------|---------------------------------|-----------------------|------------------------|-----------------------|------------------------|-----------------------|---------------------------|-----------------------|------------------------|--|--|--|
| No | Groups | Species                         | 1                     |                        | 2                     |                        | 3                     |                           | Total                 |                        |  |  |  |
|    |        |                                 | Ind.                  | Wet wt.                | Ind.                  | Wet wt.                | Ind.                  | Wet wt.                   | Ind.                  | Wet wt.                |  |  |  |
|    |        |                                 | (/0.1m <sup>2</sup> ) | (g/0.1m <sup>2</sup> ) | (/0.1m <sup>2</sup> ) | (g/0.1m <sup>2</sup> ) | (/0.1m <sup>2</sup> ) | (g/0.1m <sup>2</sup> )    | (/0.3m <sup>2</sup> ) | (g/0.3m <sup>2</sup> ) |  |  |  |
| 16 | P      | <i>Pectinaria conchilega</i>    | 2                     | 0.18                   | 2                     | 0.05                   |                       |                           | 4                     | 0.23                   |  |  |  |
| 17 | P      | <i>Prionospio saccifera nc</i>  | 2                     | 0.00                   |                       |                        |                       |                           | 2                     | 0.00                   |  |  |  |
| 18 | P      | <i>Schistomeringos rudolphi</i> |                       |                        | 2                     | 0.00                   |                       |                           | 2                     | 0.00                   |  |  |  |
| 19 | P      | <i>Sigambra hanaokai</i>        | 1                     | 0.00                   | 3                     | 0.00                   | 2                     | 0.00                      | 6                     | 0.00                   |  |  |  |
| 20 | P      | <i>Sternaspis sculata</i>       |                       |                        | 1                     | 0.00                   |                       |                           | 1                     | 0.00                   |  |  |  |
| 21 | Sp     | <i>Apionsoma trichocephalus</i> | 8                     | 0.01                   | 10                    | 0.03                   | 5                     | 0.03                      | 23                    | 0.07                   |  |  |  |
| 22 | N      | Nemertean spp.                  | 1                     | 0.00                   |                       |                        | 1                     | 0.01                      | 2                     | 0.01                   |  |  |  |
| 23 | M      | <i>Nitidotellina iridella</i>   | 3                     | 0.04                   |                       |                        |                       |                           | 3                     | 0.04                   |  |  |  |
| 24 | M      | <i>Paphia undulata</i>          |                       |                        |                       |                        | 2                     | 0.23                      | 2                     | 0.23                   |  |  |  |
| 25 | M      | <i>Solen dunkerianus</i>        |                       |                        |                       |                        | 1                     | 0.07                      | 1                     | 0.07                   |  |  |  |
| 26 | M      | <i>Theora lata</i>              |                       |                        |                       |                        | 1                     | 0.01                      | 1                     | 0.01                   |  |  |  |
| 27 | Eh     | <i>Thalassema sabinum</i>       | 21                    | 4.80                   | 23                    | 5.00                   | 41                    | 5.68                      | 85                    | 15.48                  |  |  |  |
| 28 | Ec     | <i>Amphioplus laevis</i>        | 1                     | 0.00                   |                       |                        | 1                     | 0.00                      | 2                     | 0.01                   |  |  |  |
| 29 | Ec     | <i>Amphioplus lucidus</i>       |                       |                        | 2                     | 0.00                   | 2                     | 0.00                      | 4                     | 0.00                   |  |  |  |
| 30 | Ec     | <i>Ophiocnemis marmorata</i>    | 1                     | 0.00                   |                       |                        |                       |                           | 1                     | 0.00                   |  |  |  |

P = Polychaeta, C = Crustacea, M = Mollusca, N = Nemertea, Sp = Sipuncula, Eh = Echiura, Ec = Echinodermata  
 Biomass = 0.00 g / 0.1m<sup>2</sup> : The specimen with total biomass less than 0.01 g / 0.1m<sup>2</sup>

**Appendix II (cont'd) List of collected specimens at every sampling site in dry season**

| Sampling point: P4      Sampling date: 12/12/2009 |        |                                     |                               |                                   |                               |                                   |                               |                                   |                               |                                   |  |
|---|--------|-------------------------------------|-------------------------------|-----------------------------------|-------------------------------|-----------------------------------|-------------------------------|-----------------------------------|-------------------------------|-----------------------------------|--|
| No  | Groups | Species                             | 1                             |                                   | 2                             |                                   | 3                             |                                   | Total                         |                                   |  |
|   |        |                                     | Ind.<br>(/0.1m <sup>2</sup> ) | Wet wt.<br>(g/0.1m <sup>2</sup> ) | Ind.<br>(/0.1m <sup>2</sup> ) | Wet wt.<br>(g/0.1m <sup>2</sup> ) | Ind.<br>(/0.1m <sup>2</sup> ) | Wet wt.<br>(g/0.1m <sup>2</sup> ) | Ind.<br>(/0.3m <sup>2</sup> ) | Wet wt.<br>(g/0.3m <sup>2</sup> ) |  |
| 31  | C      | Amphipod spp.                       | 5                             | 0.00                              | 1                             | 0.00                              | 3                             | 0.00                              | 9                             | 0.00                              |  |
| 32  | C      | <i>Neoxenophthalmus obscurus</i>    |                               |                                   | 2                             | 0.06                              |                               |                                   | 2                             | 0.06                              |  |
| 33  | C      | <i>Raphidopus ciliatus</i>          |                               |                                   | 1                             | 0.02                              | 4                             | 0.15                              | 5                             | 0.17                              |  |
| 34  | C      | <i>Tritodynamia longipropodium</i>  |                               |                                   |                               |                                   | 1                             | 0.05                              | 1                             | 0.05                              |  |
| 35  | C      | <i>Typhlocarcinus villosus</i>      |                               |                                   |                               |                                   | 2                             | 0.11                              | 2                             | 0.11                              |  |
| 36  | C      | Unidentified juvenile shrimp        |                               |                                   |                               |                                   | 1                             | 0.00                              | 1                             | 0.00                              |  |
| 37  | C      | <i>Xenophthalmus pinnotheroides</i> |                               |                                   | 1                             | 0.32                              |                               |                                   | 1                             | 0.32                              |  |
|   |        |                                     | 84                            | 5.1177                            | 88                            | 5.7328                            | 110                           | 6.4775                            | 282                           | 17.33                             |  |
|   | Total  |                                     |                               |                                   |                               |                                   |                               |                                   |                               |                                   |  |

P = Polychaeta, C = Crustacea, M = Mollusca, N = Nemertea, Sp = Sipuncula, Eh = Echiura, Ec = Echinodermata  
 Biomass = 0.00 g / 0.1m<sup>2</sup> : The specimen with total biomass less than 0.01 g / 0.1m<sup>2</sup>