

Appendix 7b.8 Detailed Benthos Survey Results for Shek Kwu Chau

1 Introduction

The aim of the present survey is to obtain ecological baseline information on the benthic condition off the southern coast of Shek Kwu Chau.

2 Methodologies

2.1 Field sampling

In order to collect comprehensive benthic baseline information off the southern coast of Shek Kwu Chau, benthos sampling was undertaken at five sampling points (**Figure 7b.3**). Two sampling points, P1 and P2 were located inside the proposed reclamation area for constructing the proposed integrated waste management facilities. Three sampling points (P3, P4 and P5) were located about 200 m away from the proposed reclamation area. The coordinates of the five sampling points were fixed by Global Positioning System (GPS) on board (**Table 2.1**). The surveys were conducted once in dry season (15th February, 2009) and wet season (14th June, 2009).

At every sampling point, three replicates of sediment samples were collected using a 0.1 m² van Veen grab. Collected samples were accepted when at least two-third of grab volume was filled. A photographic record of the sediment texture and colour was taken. The samples were washed with gentle seawater through a wooden box of sieve with 0.5 mm mesh size. Large animals that were visible from the residues were hand-picked into a small plastic vial. All remains were washed and transferred into a plastic container followed by preservation with 70% ethanol solution and staining with 1% Rose Bengal.

2.2 Laboratory work

After arrival to laboratory, the samples were stored for one day to ensure sufficient preservation and staining. The animals collected were sorted out from the sediment residues. For quality assurance, the sediment residues of one-third sorted samples were randomly rechecked. No missed specimen was found in the recheck.

The collected specimens were identified to the lowest taxonomic resolution by a trained technician. Examination of the morphological features of the specimens was undertaken with the aid of both stereoscopic and compound microscopes. The taxonomic classification was conducted in accordance to the following references: Polychaetes: Day (1967), Gallardo (1967), Fauchald (1977), Yang and Sun (1988), Wu et al. (1997), Sun (2004); Crustaceans: Dai and Yang (1991), Dong (1991); Mollusks: Qi (2004). The number of individuals of each species was recorded by counting the anterior portions of the

fauna only. Total biomass of each species was determined as preserved wet weight, after blotting the animals on filter paper for 3 minutes before weighing to the nearest 0.0001g.

2.3 Data analysis

Data collected from three replicate samples at every sampling point were pooled together for data analysis. Shannon-Weaver Diversity Index (H') and Pielou's Species Evenness (J) were calculated using the formulae below,

$$H' = -\sum (N_i / N) \ln (N_i / N) \text{ (Shannon and Weaver, 1963)}$$

$$J = H' / \ln S, \text{ (Pielou, 1966)}$$

where S is the total number of species in the sample, N is the total number of individuals, and N_i is the number of individuals of the i th species.

Table 2.1. *The GPS coordinates of the sampling points (in WGS84 datum (ITRF96 Reference Frame))*

Sampling point	Latitude (N)	Longitude (E)
P1	22° 11.363'	113° 59.221'
P2	22° 11.265'	113° 59.331'
P3	22° 11.116'	113° 59.250'
P4	22° 11.214'	113° 59.025'
P5	22° 11.424'	113° 58.894'

3 Results

3.1 Sediment texture and colour

Figure 3.1 shows the sediment texture and colour at every sampling point in two seasons of sampling. At P1, the substratum was sandy sediments consisted of ~50% silt-clay fraction (particle diameter <64µm) and ~50% coarse materials (coarse sands, gravels and broken shells of mollusks). Very coarse sands were found at BTP2 while significant amount of gravels and broken shells of mollusks was noticed (~30% silt-clay fraction and 70% coarse materials). It was muddy substratum (~80% silt-clay fraction) at other sampling points (P3, P4 and P5). The sediments were grey in colour and no special odour was noticed on board at all sampling points in two seasons.

3.2 Benthic baseline

Table 3.1 lists the total abundance and total biomass of every faunal group. A total of 1949 specimens were collected in dry and wet seasons. Ninety four of 101 taxa were identified to genus or species levels. The most diverse phylum was polychaetes (58 species + Aphroditidae spp. + Syllidae spp.) followed by 13 species of crustaceans (12 species + unidentified juvenile shrimp), 8 species of mollusks, 5 species of cnidarians, 5 species of echinoderms (4 species + unidentified sea cucumber), 3 species of fishes, 2 species of echiurans and 2 species of sipunculan. Amphipods, nudibranchs and nemerteans were classified into three general taxa due to limited taxonomic references. In dry season, 87%, 5%, 8% of total abundance were polychaetes, crustaceans and other phyla respectively. The total biomass was 45.69g, in which 62%, 16%, 12% and 11% of total biomass were accounted by mollusks, polychaetes, crustaceans and other phyla respectively. In wet season, 76%, 10%, 8%, 6% of total abundance were polychaetes, crustaceans, echiurans and other phyla respectively. The total biomass was 46.52g, in which 42%, 20%, 16%, 11% and 11% of total biomass were accounted by echiurans, mollusks, crustaceans, polychaetes and other phyla respectively.

Table 3.2 shows the percent proportion of every faunal group (in total abundance) at every sampling point in two seasons. In dry season, polychaete was the most abundant group at all sampling points that accounted for 70-94% of total abundance. Crustacean was the second abundant group (3-14%) at all sampling points except P5. Nemertean was the second abundant group (11.7% of total abundance) at P5. In wet season, polychaete was the most abundant group at all sampling points that accounted for 54-89% of total abundance. Echiuran was the second abundant group (13-19%) at P3 and P4. Crustacean was the second abundant group (6-11%) at P1, P2 and P5.

Table 3.3 and **Figure 3.2** show the total number of species, total abundance, total biomass, H' and J at every sampling point in two seasons. The species number ranged 24-37 spp. 0.3m^{-2} and 23-36 spp. 0.3m^{-2} in dry and wet seasons respectively among all sampling points. Neither seasonal change nor

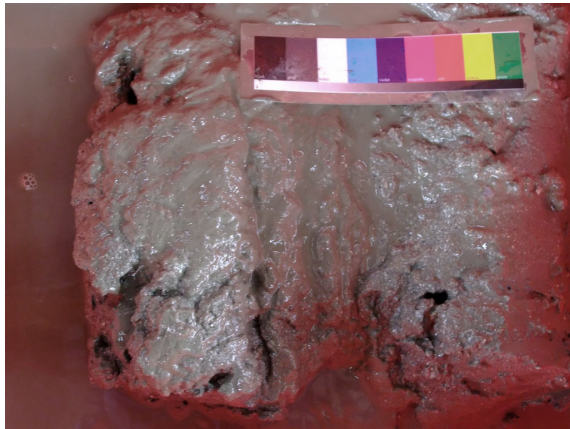
spatial difference was noticed. At P1 and P2, the total abundances ranged 1470-1497 ind. m⁻² in dry season and decreased to 527-957 ind. m⁻² in wet season. At other three sampling points, the total abundances ranged 340-383 ind. m⁻² and 310-350 ind. m⁻² in dry and wet seasons respectively. The total abundances at P1 and P2 were higher than other three sampling points. The *H'* and *J* ranged 2.00-2.93 and 0.57-0.83 respectively among five sampling points and remained similar across seasons.

In dry season, the total biomass at P3 and P5 (35.5-48.4 g m⁻²) were higher than other three sampling points (20.0-26.0 g m⁻²). The higher total biomasses were accounted by one bivalve *Paphia undulata* at P3 and two bivalves *Macoma candida* at P5 only. In wet season, the total biomasses at P3, P4 and P5 (32.2-47.2 g m⁻²) were higher than other two sampling points (13.5-16.2 g m⁻²). The higher total biomasses were accounted by echiurans *Thalassema sabinum* at P3 and P4. It was accounted by one bivalve *Macoma candida* and one fish *Muraenichthys* sp. at P5.

Table 3.4 lists out the five most abundant species at every sampling point in dry season. P1 was dominated by polychaetes *Prionospio malmgreni* (36%), *Mediomastus* sp. (22%) and *Tharyx* sp. (21%). P2 was dominated by polychaetes *Tharyx* sp. (42%), *Eunice indica* (14%) and *Mediomastus* sp. (11%). At other three sampling points, polychaete *Mediomastus* sp. was the major dominant species (29-44%). Nemertean was another dominant taxon at P5 (12%).

Table 3.5 lists out the five most abundant species at every sampling point in wet season. P1 was dominated by polychaetes *Decamastus* sp. (22%), *Cirriformia* sp. (16%) and *Prionospio malmgreni* (14%). P2 was dominated by polychaetes *Eunice indica* (44%). At other three sampling points, polychaete *Mediomastus* sp. was the major dominant species (25-27%). Echiuran *Thalassema sabinum* was another dominant species at P3 and P4 (19-22%). The complete list of collected specimens is provided in **Appendices I & II**.

Dry season



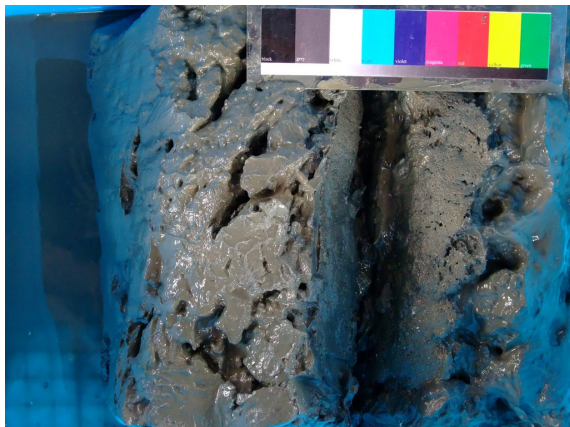
Wet season



P1 (sandy sediment)



P2 (Very coarse sands with gravels and broken shells of mollusks and crustaceans)

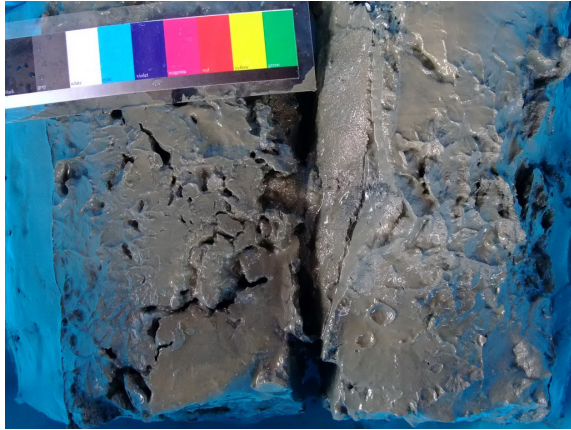


P3 (muddy sediment)

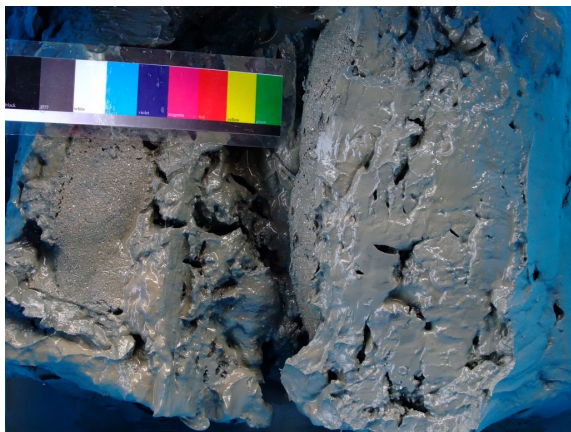
Figure 3.1. *Photographic records of sediment at the sampling points in dry and wet seasons*

Dry season

Wet season



P4 (muddy sediment)



P5 (muddy sediment)

Figure 3.1 (Cont'd). *Photographic records of sediment at the sampling points in dry and wet seasons*

Table 3.1. Total abundance and total biomass of every faunal group in dry and wet seasons

Faunal group	Total ind.	%	Total biomass (g)	%
<i>Dry Season</i>				
Polychaeta	1055	87	7.4232	16
Crustacea	60	5	5.3421	12
Nemertea	37	3	0.1897	0
Cnidaria	23	2	2.9798	7
Sipuncula	14	1	0.0593	0
Echiura	9	1	1.2340	3
Mollusca	8	1	28.2104	62
Echinodermata	3	0	0.0085	0
Fish	1	0	0.2449	1
Total	1210		45.6919	
<i>Wet Season</i>				
Polychaeta	560	76	4.9361	11
Crustacea	76	10	7.5665	16
Echiura	59	8	19.3756	42
Sipuncula	13	2	0.0956	0
Nemertea	9	1	0.4402	1
Echinodermata	9	1	0.2306	0
Mollusca	9	1	9.2032	20
Cnidaria	2	0	0.6357	1
Fish	2	0	4.0341	9
Total	739		46.5176	

0 %: total individual / biomass of the faunal group is less than 1% of that of all specimens

Table 3.2. *The percent proportion of faunal groups (in total abundance) at every sampling point in dry and wet seasons*

	P1	P2	P3	P4	P5
<i>Dry Season</i>					
Polychaeta	94	88	70	83	75
Crustacea	3	4	14	7	6
Nemertea	1	3	2	3	12
Mollusca	1		1	2	2
Sipuncula	0	1	6	1	2
Echiura	0	0	3	3	
Cnidaria		4	3		3
Echinodermata			1	1	1
Fish			1		
<i>Wet Season</i>					
Polychaeta	89	83	61	54	72
Crustacea	6	8	13	19	11
Nemertea	3			1	3
Echiura	2	4	19	22	3
Sipuncula		2	3	2	2
Cnidaria		1			
Echinodermata		2			4
Mollusca		0	3	2	3
Fish			1		1

0 %: Relative abundance of the faunal group is less than 1% of that of all specimens

Table 3.3. Number of species, total abundance, total biomass, Shannon-Weaver Diversity Index (H') and Pielou's Species Evenness (J) at every sampling point in dry and wet seasons

	P1		P2		P3		P4		P5	
	Dry	Wet	Dry	Wet	Dry	Wet	Dry	Wet	Dry	Wet
Total number of species (spp. 0.3 m⁻²)	34	29	37	36	30	23	29	23	24	34
Total abundance (ind. m⁻²)	1470	527	1497	957	340	320	383	350	343	310
Total biomass (g m⁻²)	25.99	16.21	19.99	13.47	48.44	32.17	22.38	45.98	35.51	47.24
H'	2.00	2.62	2.29	2.44	2.81	2.54	2.45	2.48	2.52	2.93
J	0.57	0.78	0.64	0.68	0.83	0.81	0.73	0.79	0.79	0.83

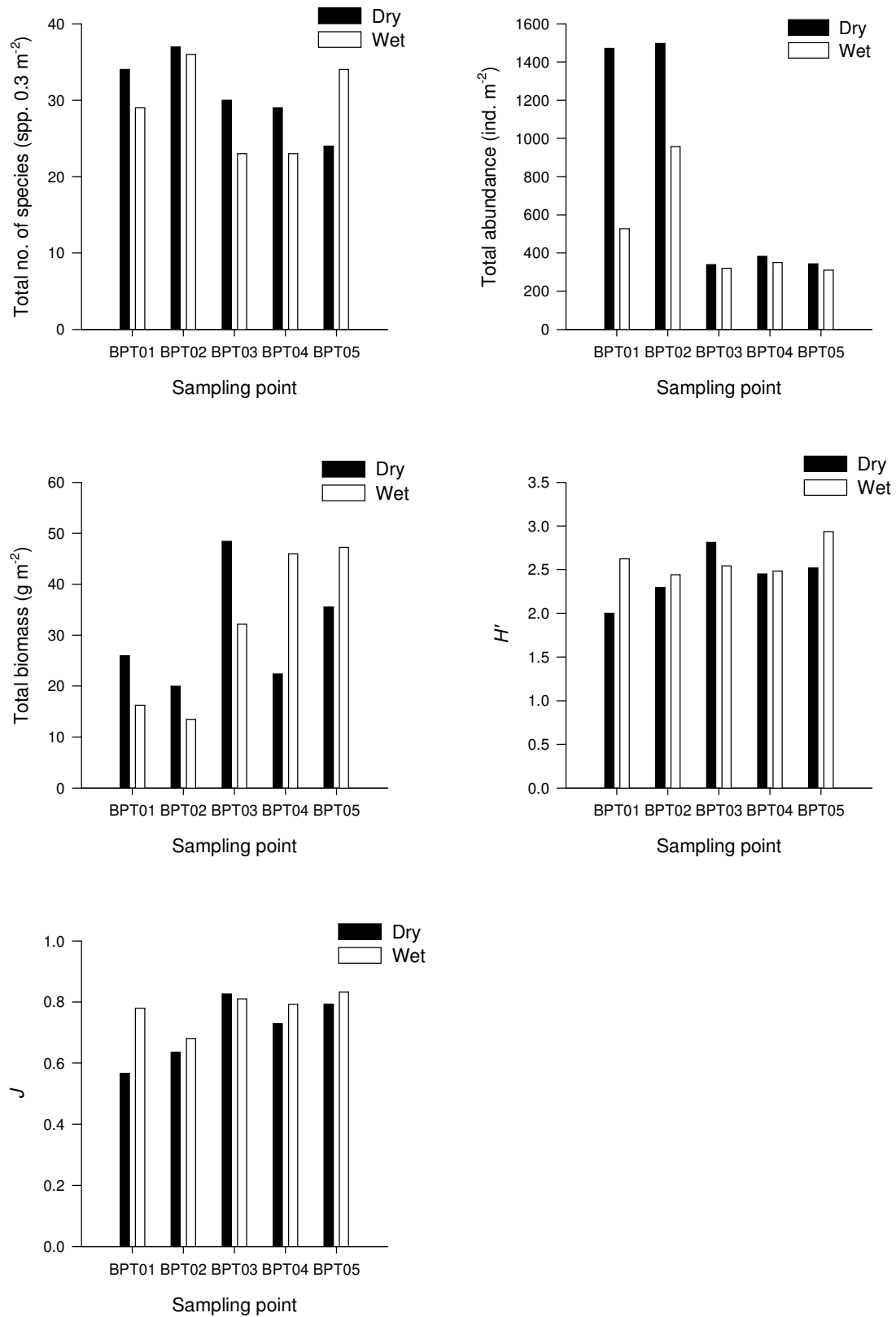


Figure 3.2. Number of species, total abundance, total biomass, Shannon-Weaver Diversity Index (H') and Pielou's Species Evenness (J) at every sampling point in dry and wet seasons

Table 3.4. The five most abundant species at every sampling point in dry season

Sampling point	Group	Species	mean density (ind. m ⁻²)	mean biomass (g m ⁻²)	relative abundance (%)
P1	P	<i>Prionospio malmgreni</i>	533	2.10	36
	P	<i>Mediomastus</i> sp.	323	1.23	22
	P	<i>Tharyx</i> sp.	303	2.47	21
	P	<i>Scolecopsis squamata</i>	63	0.45	4
	P	<i>Nectoneanthes alatopalpis</i>	23	0.23	2
P2	P	<i>Tharyx</i> sp.	633	1.83	42
	P	<i>Eunice indica</i>	203	1.79	14
	P	<i>Mediomastus</i> sp.	167	0.18	11
	P	<i>Nectoneanthes alatopalpis</i>	50	0.16	3
	N	Nemertean spp.	50	0.21	3
P3	P	<i>Mediomastus</i> sp.	100	0.20	29
	C	<i>Diastylis</i> sp.	30	0.00	9
	Sp	<i>Apionsoma trichocephalus</i>	20	0.09	6
	P	<i>Schistomeringos rudolphi</i>	20	0.02	6
	P	<i>Tharyx</i> sp.	17	0.04	5
P4	P	<i>Mediomastus</i> sp.	167	0.29	44
	P	<i>Paraprionospio pinnata</i>	23	0.02	6
	P	<i>Tharyx</i> sp.	17	0.11	4
	P	<i>Schistomeringos rudolphi</i>	13	0.01	4
	P	<i>Sigambra hanaokai</i>	13	0.02	4
P5	P	<i>Mediomastus</i> sp.	117	0.26	34
	N	Nemertean spp.	40	0.12	12
	P	<i>Tharyx</i> sp.	27	0.17	8
	P	<i>Schistomeringos rudolphi</i>	20	0.03	6
	C	<i>Neoxenophthalmus obscurus</i>	17	2.65	5

P = Polychaeta, C = Crustacea, N = Nemertea, Sp = Sipuncula

Table 3.5. The five most abundant species at every sampling point in wet season

Sampling point	Group	Species	mean density (ind. m ⁻²)	mean biomass (g m ⁻²)	relative abundance (%)
P1	P	<i>Decamastus</i> sp.	113	0.04	22
	P	<i>Cirriformia</i> sp.	87	0.11	16
	P	<i>Prionospio malmgreni</i>	73	0.09	14
	P	<i>Lumbrinereis shiinoi</i>	43	0.03	8
	P	<i>Glycera tridactyla</i>	33	0.51	6
P2	P	<i>Eunice indica</i>	417	3.56	44
	P	<i>Tharyx</i> sp.	90	0.22	9
	P	<i>Cirriformia</i> sp.	40	0.11	4
	Eh	<i>Arhynchite</i> sp.	40	1.16	4
	P	<i>Glycera chirori</i>	37	0.28	4
P3	P	<i>Mediomastus</i> sp.	80	0.18	25
	Eh	<i>Thalassema sabinum</i>	60	26.39	19
	C	<i>Raphidopus ciliatus</i>	27	2.69	8
	P	<i>Aglaophamus dibranchis</i>	23	0.05	7
	P	<i>Aglaophamus sinensis</i>	20	0.39	6
P4	P	<i>Mediomastus</i> sp.	93	0.15	27
	Eh	<i>Thalassema sabinum</i>	77	32.39	22
	P	<i>Aglaophamus dibranchis</i>	23	0.06	7
	C	<i>Raphidopus ciliatus</i>	17	3.01	5
	C	<i>Neoxenophthalmus obscurus</i>	17	3.59	5
P5	P	<i>Mediomastus</i> sp.	83	0.22	27
	P	<i>Sternaspis sculata</i>	27	0.11	9
	C	<i>Neoxenophthalmus obscurus</i>	20	2.79	6
	P	<i>Aglaophamus sinensis</i>	20	0.35	6
	P	<i>Lumbrinereis shiinoi</i>	17	0.03	5

P = Polychaeta, C = Crustacea, Eh = Echiura

4 References

- Borja, A., Franco, J., Pe'rez, V., 2000. A marine biotic index to establish the ecological quality of soft-bottom benthos within European estuarine and coastal environments. *Marine Pollution Bulletin* 40, 1100–1114.
- Cheung, S.G., Lam, N.W.Y., Wu, R.S.S., Shin, P.K.S., 2008. Spatio-temporal changes of marine macrobenthic community in sub-tropical waters upon recovery from eutrophication. II. Life-history traits and feeding guilds of polychaete community. *Marine Pollution Bulletin* 56, 297–307.
- CPSL (CityU Professional Services Limited), 2002. Consultancy Study on Marine Benthic Communities in Hong Kong (Agreement No. CE 69/2000) submitted to Agriculture, Fisheries and Conservation Department, HKSAR Government. Centre for Coastal Pollution and Conservation, CityU Professional Services Limited.
- Dai, A.Y., Yang, S.L., 1991. *Crabs of the China Seas*. China Ocean Press. Beijing.
- Dauer, D.M., 1993. Biological criteria, environmental health and estuarine macrobenthic community structure. *Marine Pollution Bulletin* 26, 249-257.
- Day, J.H., 1967. *A monograph on the polychaeta of South Africa*. Trustees of the British Museum (Natural History). London.
- Dong, Y.M., 1991. *Fauna of ZheJiang Crustacea*. Zhejiang Science and Technology Publishing House. ZheJiang.
- EPD, 1997. *Technical Memorandum on Environmental Impact Assessment Process (1st edition)*. Environmental Protection Department, HKSAR Government.
- EPD, 2006. *20 Years of Marine Water Quality Monitoring in Hong Kong 1986-2005*. In: web site of Environmental Protection Department, HKSAR Government [Latest retrieved July 2009 from http://www.epd.gov.hk/epd/misc/marine_quality/1986-2005/index.html].
- EPD, 2008. *Marine Water Quality 2007*. Environmental Protection Department, HKSAR Government, pp 141.
- Fauchald, K., 1977. *The polychaete worms. Definitions and keys to the orders, families and genera*. Natural History Museum of Los Angeles County, Science Series 28. Los Angeles, U.S.A..
- Fauchald, K., Jumars, P.A., 1979. *The diet of worms: a study of polychaete feeding guilds*. *Oceanography and Marine Biology: An Annual Review* 17, 193–284.
- Fraser, C., Hutchings, P., Williamson, J., 2006. Long-term changes in polychaete assemblages of Botany Bay (NSW, Australia) following a dredging event. *Marine Pollution Bulletin* 52, 997-1010.
- Gallardo, V., 1967. *Polychaeta from the Bay of Nha Trang, South Viet Nam*. In: *Scientific Results of Marine Investigations of the South China Sea and the Gulf of Thailand 1959-1961*, Naga Report 4(3). Scripps Institution of Oceanography, University of California Press. La Jolla, California, 35-279.
- Grassle, J.F., Grassle, J.P., 1974. *Opportunistic life histories and genetic systems in marine*

benthic polychaetes. *Journal of Marine Research* 32, 253-284.

- Lam, N.W.Y., 2007. Benthos Survey Report. In: EIA report of Kai Tak Development Engineering Study Cum Design and Construction of Advance Works Investigation, Design and Construction, **Appendix 9.2**.
- NEL, 2009. Benthos survey report (Dry and Wet Seasons) submitted to ENSR Asia (HK) Limited for project 'Shatin To Central Link (SCL) Environmental Impact Assessment for Cross Harbour Section (Phase II) – Baseline Marine Ecological Survey'. Neanthes Eco-consultant Limited. in press.
- Pearson, T.H., Rosenberg, R., 1978. Macrobenthic succession in relation to organic enrichment and pollution of the marine environment. *Oceanography and Marine Biology: an Annual Review* 16, 229–311.
- Pielou, E.C., 1966. Shannon's formula as a measure of species diversity: its use and misuse. *American Naturalist* 100, 463-465.
- Qi, Z.Y., 2004. *Seashells of China*. China Ocean Press. Beijing, China.
- Shannon, C.E., Weaver, W., 1963. *The Mathematical Theory of Communication*. Urbana: University of Illinois Press, USA.
- Shin, P.K.S., Huang, Z.G., Wu, R.S.S., 2004. An updated baseline of subtropical macrobenthic communities in Hong Kong. *Marine Pollution Bulletin* 49, 119-141.
- Sun, R.P., Yang, D.J., 2004. *Fauna Sinica. Phylum Annelida. Class Polychaeta II, Order Nereidida*. Science Press. Beijing.
- Thompson, G.B., Shin, P.K.S., 1983. Sewage pollution and the infaunal benthos of Victoria Harbour, Hong Kong. *Journal of Experimental Marine Biology and Ecology* 67, 279-299.
- Wu, B.L., Wu, Q.Q., Qiu, J.W., Lu, H., 1997. *Fauna Sinica, Phylum Annelida, Class Polychaeta, Order Phyllodocimorpha*. Science Press. Beijing.
- Yang, D.J., Sun, R.P., 1988. Polychaetous annelids commonly seen from the Chinese waters (Chinese version). China Agriculture Press, China.

Appendix I List of collected specimens at every sampling point in dry season

		Sampling point: P1						Sampling date: 15/02/2009					
No	Groups	Species	1		2		3		Total				
			Ind. (/0.1m ²)	Wet wt. (g/0.1m ²)	Ind. (/0.1m ²)	Wet wt. (g/0.1m ²)	Ind. (/0.1m ²)	Wet wt. (g/0.1m ²)	Ind. (/0.3m ²)	Wet wt. (g/0.3m ²)			
1	P	<i>Anobothrus</i> sp.	1	0.00	1	0.00	1	0.00	3	0.00			
2	P	Aphroditidae spp			1	0.00			1	0.00			
3	P	<i>Mediomastus</i> sp.	26	0.14	30	0.06	41	0.17	97	0.37			
4	P	<i>Cirriformia</i> sp.	1	0.00	1	0.01			2	0.01			
5	P	<i>Tharyx</i> sp.	39	0.25	22	0.10	30	0.40	91	0.74			
6	P	<i>Eunice indica</i>	1	0.01					1	0.01			
7	P	<i>Glycera alba</i>	1	0.01					1	0.01			
8	P	<i>Glycera chironi</i>	1	0.03					1	0.03			
9	P	<i>Glycera tridactyla</i>	1	0.03	1	0.01	3	0.87	5	0.91			
10	P	<i>Glycinde gurjanovae</i>			1	0.00			1	0.00			
11	P	<i>Ophiodromus obscura</i>					1	0.00	1	0.00			
12	P	<i>Lumbrinereis shiinoi</i>			5	0.01	1	0.00	6	0.01			
13	P	<i>Lumbrinereis</i> sp. 1	2	0.00					2	0.00			
14	P	<i>Euchymene oerstedii</i>			3	0.02			3	0.02			
15	P	<i>Nephtys oligobranchia</i>			1	0.00			1	0.00			

P = Polychaeta, C = Crustacea, M = Mollusca, N = Nemertea, Sp = Sipuncula, Eh = Echiura
 Biomass = 0.00 g / 0.1 m² : The specimen with total biomass less than 0.01 g / 0.1 m²

Appendix I (cont'd) List of collected specimens at every sampling point in dry season

		Sampling point: P1						Sampling date: 15/02/2009					
No	Groups	Species	1		2		3		Total				
			Ind. (/0.1m ²)	Wet wt. (g/0.1m ²)	Ind. (/0.1m ²)	Wet wt. (g/0.1m ²)	Ind. (/0.1m ²)	Wet wt. (g/0.1m ²)	Ind. (/0.3m ²)	Wet wt. (g/0.3m ²)			
16	P	<i>Nectoneanthes alatopalpis</i>	3	0.01	3	0.06	1	0.00	7	0.07			
17	P	<i>Onuphis eremita</i>	1	0.00					1	0.00			
18	P	<i>Ophelina acuminata</i>			1	1.09	2	0.17	3	1.26			
19	P	<i>Sigambra hanaokai</i>	3	0.00					3	0.00			
20	P	<i>Scalibregma inflatum</i>	1	0.00			1	0.00	2	0.00			
21	P	<i>Prionospio malmgreni</i>	74	0.26	34	0.10	52	0.27	160	0.63			
22	P	<i>Scolelepis squamata</i>	4	0.01			15	0.12	19	0.13			
23	P	<i>Loimia medusa</i>	1	0.02	1	0.01	1	0.55	3	0.58			
24	P	<i>Pista</i> sp.	1	0.00					1	0.00			
25	Sp	<i>Apionsoma trichocephalus</i>	1	0.00	1	0.01			2	0.01			
26	N	Nemertean spp.	2	0.08	1	0.00	1	0.00	4	0.08			
27	Eh	<i>Thalassema sabinum</i>			1	0.46	1	0.11	2	0.57			
28	C	<i>Neoxenophthalmus obscurus</i>			1	0.28			1	0.28			
29	C	<i>Raphidopus ciliatus</i>					1	0.61	1	0.61			
30	C	<i>Tritodynamia longipropodum</i>					2	0.17	2	0.17			

P = Polychaeta, C = Crustacea, M = Mollusca, N = Nemertea, Sp = Sipuncula, Eh = Echiura
 Biomass = 0.00 g / 0.1m² : The specimen with total biomass less than 0.01 g / 0.1m²

Appendix I (cont'd) List of collected specimens at every sampling point in dry season

Sampling point: P1												Sampling date: 15/02/2009					
No	Groups	Species	1		2		3		Total								
			Ind. (/0.1m ²)	Wet wt. (g/0.1m ²)	Ind. (/0.1m ²)	Wet wt. (g/0.1m ²)	Ind. (/0.1m ²)	Wet wt. (g/0.1m ²)	Ind. (/0.3m ²)	Wet wt. (g/0.3m ²)							
31	C	<i>Alpheus distinguendus</i>			1	0.67	1	0.54	2	1.22							
32	C	<i>Callinassa japonica</i>	3	0.06					3	0.06							
33	C	Amphipod spp.	2	0.00	1	0.00	3	0.00	6	0.00							
34	M	<i>Nitidotellina iridella</i>						0.01	3	0.01							
	Total		169	0.9061	111	2.8846	161	4.0049	441	7.80							

P = Polychaeta, C = Crustacea, M = Mollusca, N = Nemertea, Sp = Sipuncula, Eh = Echiura

Biomass = 0.00 g / 0.1 m² : The specimen with total biomass less than 0.01 g / 0.1 m²

Appendix I (cont'd) List of collected specimens at every sampling point in dry season

Sampling point: P2												Sampling date: 15/02/2009					
No	Groups	Species	1		2		3		Total								
			Ind. (/0.1m ²)	Wet wt. (g/0.1m ²)	Ind. (/0.1m ²)	Wet wt. (g/0.1m ²)	Ind. (/0.1m ²)	Wet wt. (g/0.1m ²)	Ind. (/0.3m ²)	Wet wt. (g/0.3m ²)							
1	P	<i>Anobothrus</i> sp.	1	0.00						1	0.00						
2	P	<i>Schistocomus</i> sp.	1	0.00	1	0.00				2	0.00						
3	P	<i>Linopherus paucibranchiata</i>	7	0.01	4	0.02				11	0.04						
4	P	<i>Mediomastus</i> sp.	22	0.03	7	0.00	21	0.02		50	0.06						
5	P	<i>Bhawania brevis</i>			3	0.00	2	0.00		5	0.00						
6	P	<i>Cirriformia</i> sp.	2	0.08	4	0.04	2	0.07		8	0.19						
7	P	<i>Tharyx</i> sp.	67	0.14	51	0.23	72	0.18		190	0.55						
8	P	<i>Schistomeringos rudolphi</i>			1	0.00	1	0.00		2	0.00						
9	P	<i>Eunice indica</i>	17	0.13	26	0.34	18	0.07		61	0.54						
10	P	<i>Glycera chirori</i>	1	0.00	1	0.01				2	0.01						
11	P	<i>Glycinde gurjanovae</i>			1	0.00				1	0.00						
12	P	<i>Lumbrineris</i> sp. 1	1	0.00			1	0.00		2	0.00						
13	P	<i>Nephtys oligobranchia</i>			2	0.00				2	0.00						
14	P	<i>Nectoneanthes alatopalpis</i>	4	0.01	6	0.03	5	0.00		15	0.05						
15	P	<i>Onuphis eremita</i>			1	0.00				1	0.00						

P = Polychaeta, C = Crustacea, N = Nemeritea, Sp = Sipuncula, Eh = Echiura, Cn = Cnidaria
 Biomass = 0.00 g / 0.1m² : The specimen with total biomass less than 0.01 g / 0.1m²

Appendix I (cont'd) List of collected specimens at every sampling point in dry season

		Sampling point: P2						Sampling date: 15/02/2009					
No	Groups	Species	1		2		3		Total				
			Ind. (/0.1m ²)	Wet wt. (g/0.1m ²)	Ind. (/0.1m ²)	Wet wt. (g/0.1m ²)	Ind. (/0.1m ²)	Wet wt. (g/0.1m ²)	Ind. (/0.3m ²)	Wet wt. (g/0.3m ²)			
16	P	<i>Sigambra hanaokai</i>	3	0.00			2	0.00	5	0.00			
17	P	<i>Harmothoe asiatica</i>				4	0.02		4	0.02			
18	P	<i>Harmothoe imbricata</i>	1	0.00	3	0.03			4	0.03			
19	P	<i>Scalibregma inflatum</i>	2	0.00	1	0.00	4	0.01	7	0.01			
20	P	<i>Ehersileanira hwanghaiensis</i>	2	0.00					2	0.00			
21	P	<i>Prionospio</i> sp. 1	1	0.00					1	0.00			
22	P	<i>Prionospio malmgreni</i>	2	0.00	6	0.00			8	0.00			
23	P	<i>Scolecopsis squamata</i>	2	0.00					2	0.00			
24	P	<i>Syllidae</i> spp.	1	0.00	3	0.01			4	0.01			
25	P	<i>Loimia ingens</i>	1	0.10					1	0.10			
26	P	<i>Loimia medusa</i>	1	0.00	1	0.01	3	0.02	5	0.04			
27	Sp	<i>Apionsoma trichocephalus</i>	2	0.01			1	0.00	3	0.01			
28	N	<i>Nemertean</i> spp.	1	0.01	10	0.04	4	0.01	15	0.06			
29	Eh	<i>Thalassema sabinum</i>	1	0.02					1	0.02			
30	Cn	<i>Anthopleura</i> sp.	4	1.62			3	1.22	7	2.83			

P = Polychaeta, C = Crustacea, N = Nemertea, Sp = Sipuncula, Eh = Echiura, Cn = Cnidaria
 Biomass = 0.00 g / 0.1m² : The specimen with total biomass less than 0.01 g / 0.1m²

Appendix I (cont'd) List of collected specimens at every sampling point in dry season

		Sampling point: P2						Sampling date: 15/02/2009					
No	Groups	Species	1		2		3		Total				
			Ind. (/0.1m ²)	Wet wt. (g/0.1m ²)	Ind. (/0.1m ²)	Wet wt. (g/0.1m ²)	Ind. (/0.1m ²)	Wet wt. (g/0.1m ²)	Ind. (/0.3m ²)	Wet wt. (g/0.3m ²)			
31	Cn	<i>Cerianthus filiiformis</i>	2	0.00	5	0.00	1	0.00	8	0.01			
32	Cn	<i>Virgularia gustaviana</i>			1	0.07			1	0.07			
33	Cn	<i>Stachyptilum doffeini</i>					1	0.00	1	0.00			
34	C	<i>Neoxenophthalmus obscurus</i>	1	0.31					1	0.31			
35	C	<i>Typhlocarcinus villosus</i>	2	0.36	1	0.20	1	0.21	4	0.76			
36	C	<i>Alpheus distinguendus</i>			2	0.25			2	0.25			
37	C	Amphipod spp.	2	0.00	1	0.00	7	0.00	10	0.00			
	Total		154	2.8517	142	1.3004	153	1.8453	449	6.00			

P = Polychaeta, C = Crustacea, N = Nemertea, Sp = Sipuncula, Eh = Echiura, Cn = Cnidaria
 Biomass = 0.00 g / 0.1m² : The specimen with total biomass less than 0.01 g / 0.1m²

Appendix I (cont'd) List of collected specimens at every sampling point in dry season

		Sampling point: P3						Sampling date: 15/02/2009					
No	Groups	Species	1		2		3		Total				
			Ind. (/0.1m ²)	Wet wt. (g/0.1m ²)	Ind. (/0.1m ²)	Wet wt. (g/0.1m ²)	Ind. (/0.1m ²)	Wet wt. (g/0.1m ²)	Ind. (/0.3m ²)	Wet wt. (g/0.3m ²)			
1	P	<i>Anobothrus</i> sp.	2	0.01	1	0.00			3	0.01			
2	P	<i>Mediomastus</i> sp.	13	0.02	2	0.00	15	0.03	30	0.06			
3	P	<i>Tharyx</i> sp.	2	0.00	1	0.00	2	0.01	5	0.01			
4	P	<i>Cossurella dimorpha</i>					1	0.00	1	0.00			
5	P	<i>Schistomeringos rudolphi</i>			2	0.00	4	0.00	6	0.01			
6	P	<i>Ophiotromus obscura</i>					1	0.00	1	0.00			
7	P	<i>Lumbrineris shiinoi</i>	1	0.00	1	0.00			2	0.00			
8	P	<i>Euchymene oerstedii</i>			2	0.03			2	0.03			
9	P	<i>Aglaophamus dibranchis</i>	1	0.01			3	0.01	4	0.02			
10	P	<i>Aglaophamus sinensis</i>	2	0.04					2	0.04			
11	P	<i>Pectinaria conchilega</i>			1	0.00			1	0.00			
12	P	<i>Sigambra hanaokai</i>					3	0.00	3	0.00			
13	P	<i>Otopsis</i> sp.			2	0.00			2	0.00			
14	P	<i>Ehlersileanira hwanghaiensis</i>					1	0.00	1	0.00			
15	P	<i>Paraprionospio pinnata</i>			1	0.00	2	0.00	3	0.00			

P = Polychaeta, C = Crustacea, M = Mollusca, Ec = Echinodermata, N = Nemertea, Sp = Sipuncula, Eh = Echiura, Cn = Cnidaria, F = Fish
 Biomass = 0.00 g / 0.1m² : The specimen with total biomass less than 0.01 g / 0.1m²

Appendix I (cont'd) List of collected specimens at every sampling point in dry season

Sampling point: P3												Sampling date: 15/02/2009					
No	Groups	Species	1		2		3		Total								
			Ind. (/0.1m ²)	Wet wt. (g/0.1m ²)	Ind. (/0.1m ²)	Wet wt. (g/0.1m ²)	Ind. (/0.1m ²)	Wet wt. (g/0.1m ²)	Ind. (/0.3m ²)	Wet wt. (g/0.3m ²)							
16	P	<i>Scolelepis squamata</i>	1	0.01						1	0.01						
17	P	<i>Sternaspis sculata</i>	1	0.01			2	0.02		3	0.03						
18	P	<i>Loimia medusa</i>					1	0.02		1	0.02						
19	Sp	<i>Apionsoma trichocephalus</i>	4	0.02	1	0.00	1	0.01		6	0.03						
20	N	Nemertean spp.			1	0.00	1	0.00		2	0.00						
21	Eh	<i>Thalassema sabinum</i>					3	0.44		3	0.44						
22	Cn	<i>Anthopleura</i> sp.					1	0.03		1	0.03						
23	Cn	<i>Cerianthus filiformis</i>			1	0.00	1	0.00		2	0.00						
24	Ec	<i>Amphioplus laevis</i>					1	0.00		1	0.00						
25	C	<i>Neoxenophthalmus obscurus</i>	2	0.35	1	0.33				3	0.68						
26	C	Unidentified juvenile shrimp	1	0.01						1	0.01						
27	C	Amphipod spp.					1	0.00		1	0.00						
28	C	<i>Diastylis</i> sp.	2	0.00	6	0.00	1	0.00		9	0.00						
29	M	<i>Paphia undulata</i>	1	12.86						1	12.86						
30	F	<i>Bregmarceros macclellandi</i>					1	0.24		1	0.24						
Total			33	13.3408	23	0.3771	46	0.8145	102	14.53							

P = Polychaeta, C = Crustacea, M = Mollusca, Ec = Echinodermata, N = Nemertea, Sp = Sipuncula, Eh = Echiura, Cn = Cnidaria, F = Fish
 Biomass = 0.00 g / 0.1m² : The specimen with total biomass less than 0.01 g / 0.1m²

Appendix I (cont'd) List of collected specimens at every sampling point in dry season

		Sampling point: P4						Sampling date: 15/02/2009					
No	Groups	Species	1		2		3		Total				
			Ind. (/0.1m ²)	Wet wt. (g/0.1m ²)	Ind. (/0.1m ²)	Wet wt. (g/0.1m ²)	Ind. (/0.1m ²)	Wet wt. (g/0.1m ²)	Ind. (/0.3m ²)	Wet wt. (g/0.3m ²)			
1	P	<i>Linopherus paucibranchiata</i>			1	0.02				1	0.02		
2	P	<i>Mediomastus</i> sp.	27	0.05	6	0.01	17	0.04		50	0.09		
3	P	<i>Tharyx</i> sp.			1	0.00	4	0.03		5	0.03		
4	P	<i>Cossurella dimorpha</i>	1	0.00						1	0.00		
5	P	<i>Schistomeringos rudolphi</i>			4	0.00				4	0.00		
6	P	<i>Glycera chirori</i>					1	0.03		1	0.03		
7	P	<i>Glycinde gurjanovae</i>	1	0.00						1	0.00		
8	P	<i>Ophiodromus obscura</i>	1	0.00	1	0.00				2	0.00		
9	P	<i>Euchymene oerstedii</i>	2	0.01	1	0.01				3	0.02		
10	P	<i>Aglaophamus dibranchis</i>					3	0.02		3	0.02		
11	P	<i>Aglaophamus sinensis</i>			1	0.04	3	0.03		4	0.06		
12	P	<i>Phylo ornatus</i>					1	0.00		1	0.00		
13	P	<i>Sigambra hanaokai</i>					4	0.00		4	0.00		
14	P	<i>Otopsis</i> sp.	1	0.00	1	0.00				2	0.00		
15	P	<i>Scalibregma inflatum</i>					1	0.00		1	0.00		

P = Polychaeta, C = Crustacea, M = Mollusca, Ec = Echinodermata, N = Nemertea, Sp = Sipuncula, Eh = Echiura
 Biomass = 0.00 g / 0.1m² : The specimen with total biomass less than 0.01 g / 0.1m²

Appendix I (cont'd) List of collected specimens at every sampling point in dry season

Sampling point: P4												Sampling date: 15/02/2009			
No	Groups	Species	1		2		3		Total						
			Ind. (/0.1m ²)	Wet wt. (g/0.1m ²)	Ind. (/0.1m ²)	Wet wt. (g/0.1m ²)	Ind. (/0.1m ²)	Wet wt. (g/0.1m ²)	Ind. (/0.3m ²)	Wet wt. (g/0.3m ²)					
16	P	<i>Minuspio cirrifera</i>	2	0.00						2	0.00				
17	P	<i>Paraprionospio pinnata</i>			1	0.00	6	0.01		7	0.01				
18	P	<i>Sternaspis sculata</i>			1	0.00				1	0.00				
19	P	<i>Amaeana</i> sp.	1	0.00	1	0.00	1	0.00		3	0.00				
20	Sp	<i>Apionsoma trichocephalus</i>			1	0.00				1	0.00				
21	N	Nemertean spp.	2	0.01	1	0.00	1	0.00		4	0.01				
22	Eh	<i>Thalassema sabinum</i>	1	0.02	2	0.19				3	0.21				
23	Ec	<i>Amphiura hexactis</i>			1	0.00				1	0.00				
24	C	<i>Neoxenophthalmus obscurus</i>			2	0.16				2	0.16				
25	C	<i>Callianassa japonica</i>	1	0.00						1	0.00				
26	C	Amphipod spp.	2	0.00	2	0.00				4	0.00				
27	C	<i>Diastylis</i> sp.					1	0.00		1	0.00				
28	M	<i>Azorinus coartata</i>			1	5.69				1	5.69				
29	M	<i>Nassarius</i> sp. 1	1	0.33						1	0.33				
Total			43	0.427	29	6.1286	43	0.1589		115	6.71				

P = Polychaeta, C = Crustacea, M = Mollusca, Ec = Echinodermata, N = Nemertea, Sp = Sipuncula, Eh = Echiura
 Biomass = 0.00 g / 0.1m² : The specimen with total biomass less than 0.01 g / 0.1m²

Appendix I (cont'd) List of collected specimens at every sampling point in dry season

		Sampling point: P5						Sampling date: 15/02/2009					
No	Groups	Species	1		2		3		Total				
			Ind. (/0.1m ²)	Wet wt. (g/0.1m ²)	Ind. (/0.1m ²)	Wet wt. (g/0.1m ²)	Ind. (/0.1m ²)	Wet wt. (g/0.1m ²)	Ind. (/0.3m ²)	Wet wt. (g/0.3m ²)			
1	P	<i>Linopherus paucibranchiata</i>			2	0.03				2	0.03		
2	P	<i>Mediomastus</i> sp.	10	0.02	11	0.02	14	0.05		35	0.08		
3	P	<i>Tharyx</i> sp.	5	0.04	1	0.00	2	0.01		8	0.05		
4	P	<i>Cossurella dimorpha</i>	1	0.00			1	0.01		2	0.01		
5	P	<i>Schistomeringos rudolphi</i>	3	0.00	1	0.00	2	0.00		6	0.01		
6	P	<i>Ophiodromus obscura</i>	1	0.00			1	0.00		2	0.00		
7	P	<i>Lumbrineris shiinoi</i>			1	0.00	1	0.00		2	0.00		
8	P	<i>Euchymene oerstedii</i>			2	0.01	1	0.02		3	0.03		
9	P	<i>Aglaophamus sinensis</i>	1	0.04	1	0.02				2	0.06		
10	P	<i>Nephtys oligobranchia</i>	2	0.01						2	0.01		
11	P	<i>Pectinaria conchilega</i>			1	0.00				1	0.00		
12	P	<i>Sigambra hanaokai</i>			1	0.00	3	0.00		4	0.00		
13	P	<i>Otopsis</i> sp.	3	0.00	1	0.00				4	0.00		
14	P	<i>Harmothoe imbricata</i>			1	0.00	1	0.11		2	0.11		
15	P	<i>Ehlersileanira hwanghaiensis</i>					1	0.00		1	0.00		

P = Polychaeta, C = Crustacea, M = Mollusca, Ec = Echinodermata, N = Nemertea, Sp = Sipuncula, Cn = Cnidaria
 Biomass = 0.00 g / 0.1m² : The specimen with total biomass less than 0.01 g / 0.1m²

Appendix I (cont'd) List of collected specimens at every sampling point in dry season

Sampling point: P5												Sampling date: 15/02/2009			
No	Groups	Species	1		2		3		Total						
			Ind. (/0.1m ²)	Wet wt. (g/0.1m ²)	Ind. (/0.1m ²)	Wet wt. (g/0.1m ²)	Ind. (/0.1m ²)	Wet wt. (g/0.1m ²)	Ind. (/0.3m ²)	Wet wt. (g/0.3m ²)					
16	P	<i>Laonice cirrata</i>	1	0.03						1	0.03				
17	Sp	<i>Apionsoma trichocephalus</i>			1	0.01		1	0.00	2	0.01				
18	N	Nemertean spp.	1	0.00	7	0.01		4	0.02	12	0.04				
19	Cn	<i>Anthopleura</i> sp.			1	0.04				1	0.04				
20	Cn	<i>Cerianthus filiformis</i>	1	0.00	1	0.00				2	0.00				
21	Ec	<i>Amphiura hexactis</i>						1	0.00	1	0.00				
22	C	<i>Neoxenophthalmus obscurus</i>	5	0.79						5	0.79				
23	C	<i>Callianassa japonica</i>	1	0.02						1	0.02				
24	M	<i>Macoma candida</i>			1	3.46		1	5.86	2	9.32				
	Total		35	0.9564	34	3.6039		34	6.0917	103	10.65				

P = Polychaeta, C = Crustacea, M = Mollusca, Ec = Echinodermata, N = Nemertea, Sp = Sipuncula, Cn = Cnidaria
 Biomass = 0.00 g / 0.1m² : The specimen with total biomass less than 0.01 g / 0.1m²

Appendix II List of collected specimens at every sampling point in wet season

		Sampling point: P1						Sampling date: 14/06/2009					
No	Groups	Species	1		2		3		Total				
			Ind. (/0.1m ²)	Wet wt. (g/0.1m ²)	Ind. (/0.1m ²)	Wet wt. (g/0.1m ²)	Ind. (/0.1m ²)	Wet wt. (g/0.1m ²)	Ind. (/0.3m ²)	Wet wt. (g/0.3m ²)			
1	P	<i>Capitella</i> sp.					1	0.00		1	0.00		
2	P	<i>Cirratulus</i> sp.	1	0.00						1	0.00		
3	P	<i>Cirriformia</i> sp.	5	0.01	21	0.02				26	0.03		
4	P	<i>Decamastus</i> sp.			34	0.01				34	0.01		
5	P	<i>Eunice indica</i>	1	0.01	1	0.00				2	0.02		
6	P	<i>Glycera tridactyla</i>	4	0.10	5	0.05	1	0.00		10	0.15		
7	P	<i>Harmothoe imbricata</i>			1	0.00				1	0.00		
8	P	<i>Linopherus paucibranchiata</i>			1	0.00				1	0.00		
9	P	<i>Loimia medusa</i>	1	0.45	2	0.24	1	0.81		4	1.51		
10	P	<i>Lumbrineris shiinoi</i>	3	0.00	7	0.01	3	0.00		13	0.01		
11	P	<i>Mediomastus</i> sp.	3	0.00	2	0.00	4	0.00		9	0.01		
12	P	<i>Nectoneanthes alatopalpis</i>			1	0.00				1	0.00		
13	P	<i>Nephtys oligobranchia</i>					1	0.00		1	0.00		
14	P	<i>Notomastus</i> sp.	1	0.01						2	0.01		
15	P	<i>Paraprionospio pinnata</i>					1	0.00		1	0.00		

P = Polychaeta, C = Crustacea, N = Nemeritea, Sp = Sipuncula, Eh = Echiura, Cn = Cnidaria
 Biomass = 0.00 g / 0.1m² : The specimen with total biomass less than 0.01 g / 0.1m²

Appendix II (cont'd) List of collected specimens at every sampling point in wet season

Sampling point: P1												Sampling date: 14/06/2009		
No	Groups	Species	1			2			3			Total		
			Ind. (/0.1m ²)	Wet wt. (g/0.1m ²)	Ind. (/0.1m ²)	Wet wt. (g/0.1m ²)	Ind. (/0.1m ²)	Wet wt. (g/0.1m ²)	Ind. (/0.1m ²)	Wet wt. (g/0.1m ²)	Ind. (/0.3m ²)	Wet wt. (g/0.3m ²)		
16	P	<i>Poecilochaetus</i> sp.			2	0.00						2	0.00	
17	P	<i>Prionospio malmgreni</i>	8	0.01	14	0.01						22	0.03	
18	P	<i>Sigambra hanaokai</i>			1	0.00						1	0.00	
19	P	<i>Sternaspis sculata</i>			2	0.00						2	0.00	
20	P	Syllidae spp.			1	0.00						1	0.00	
21	P	<i>Tharyx</i> sp.			5	0.01						5	0.01	
22	N	Nemertean spp.	2	0.41	3	0.01						5	0.43	
23	Eh	<i>Thalassema sabinum</i>	1	0.11	1	0.91		1	0.24			3	1.26	
24	C	<i>Alpheus distinguendus</i>						2	0.51			2	0.51	
25	C	Amphipod spp.	1	0.00								1	0.00	
26	C	<i>Callinassa japonica</i>	1	0.01	2	0.02						3	0.03	
27	C	<i>Neoxenophthalmus obscurus</i>			1	0.21						1	0.21	
28	C	<i>Raphidopus ciliatus</i>	1	0.04	1	0.06						2	0.10	
29	C	<i>Typhlocarcinus villosus</i>			1	0.54						1	0.54	
	Total		33	1.1775	109	2.1193		16	1.5672			158	4.86	

P = Polychaeta, C = Crustacea, N = Nemertea, Eh = Echiura

Biomass = 0.00 g / 0.1m² : The specimen with total biomass less than 0.01 g / 0.1m²

Appendix II (cont'd) List of collected specimens at every sampling point in wet season

		Sampling point: P2						Sampling date: 14/06/2009					
No	Groups	Species	1		2		3		Total				
			Ind. (/0.1m ²)	Wet wt. (g/0.1m ²)	Ind. (/0.1m ²)	Wet wt. (g/0.1m ²)	Ind. (/0.1m ²)	Wet wt. (g/0.1m ²)	Ind. (/0.3m ²)	Wet wt. (g/0.3m ²)			
1	P	<i>Bhawania brevis</i>	1	0.00	2	0.00	2	0.00	5	0.00			
2	P	<i>Cirriformia</i> sp.	9	0.03	1	0.00	2	0.00	12	0.03			
3	P	<i>Eteone</i> sp.	1	0.00	3	0.00	1	0.00	5	0.00			
4	P	<i>Eunice indica</i>	62	0.62	36	0.27	27	0.18	125	1.07			
5	P	<i>Genetyllis castanea</i>			1	0.00			1	0.00			
6	P	<i>Glycera chirori</i>			6	0.04	5	0.04	11	0.08			
7	P	<i>Glycera tridactyla</i>	7	0.08					7	0.08			
8	P	<i>Harmothoe asiatica</i>	1	0.00	3	0.00	1	0.03	5	0.03			
9	P	<i>Linopherus paucibranchiata</i>	7	0.06	1	0.00	2	0.00	10	0.07			
10	P	<i>Loimia medusa</i>			3	0.07	3	0.09	6	0.15			
11	P	<i>Lumbrineris shiinoi</i>	1	0.00					1	0.00			
12	P	<i>Lysidice ninetta</i>	1	0.01					1	0.01			
13	P	<i>Marphysa stragulum</i>			2	0.01	6	0.05	8	0.06			
14	P	<i>Mediomastus</i> sp.	1	0.00			1	0.00	2	0.00			
15	P	<i>Notomastus</i> sp.			1	0.17			1	0.17			

P = Polychaeta, C = Crustacea, M = Mollusca, Ec = Echinodermata, Sp = Sipuncula, Eh = Echiura, Cn = Cnidaria
 Biomass = 0.00 g / 0.1m² : The specimen with total biomass less than 0.01 g / 0.1m²

Appendix II (cont'd) List of collected specimens at every sampling point in wet season

		Sampling point: P2						Sampling date: 14/06/2009					
No	Groups	Species	1		2		3		Total				
			Ind.	Wet wt.	Ind.	Wet wt.	Ind.	Wet wt.	Ind.	Wet wt.			
			(/0.1m ²)	(g/0.1m ²)	(/0.1m ²)	(g/0.1m ²)	(/0.1m ²)	(g/0.1m ²)	(/0.3m ²)	(g/0.3m ²)			
16	P	<i>Phyllodoce</i> sp. 1						2	0.04	2	0.04		
17	P	<i>Prionospio malmgreni</i>	3	0.00	1	0.00				4	0.00		
18	P	Syllidae spp.			1	0.00				1	0.00		
19	P	<i>Tachytrypane</i> sp.	1	0.00						1	0.00		
20	P	<i>Terebellides stroemii</i>			1	0.00		1	0.00	2	0.00		
21	P	<i>Tharyx</i> sp.	12	0.03	6	0.01		9	0.03	27	0.07		
22	Sp	<i>Apionsoma trichocephalus</i>			2	0.00				2	0.00		
23	Sp	<i>Golfingia vulgaris</i>			2	0.04		2	0.02	4	0.06		
24	Eh	<i>Arhynchite</i> sp.	6	0.13	4	0.09		2	0.13	12	0.35		
25	Cn	<i>Palythoa</i> sp.	2	0.64						2	0.64		
26	Ec	<i>Ophiocnemis marmorata</i>	2	0.02				2	0.01	4	0.03		
27	Ec	Unidentified sea cucumber			1	0.02				1	0.02		
28	C	Amphipod spp.			5	0.00		3	0.00	8	0.00		
29	C	<i>Eucrate costata</i>			1	0.04				1	0.04		
30	C	<i>Heteroplax dentata</i>			2	0.02				2	0.02		

P = Polychaeta, C = Crustacea, M = Mollusca, Ec = Echinodermata, Sp = Sipuncula, Eh = Echiura, Cn = Cnidaria
 Biomass = 0.00 g / 0.1m² : The specimen with total biomass less than 0.01 g / 0.1m²

Appendix II (cont'd) List of collected specimens at every sampling point in wet season

Sampling point: P2 Sampling date: 14/06/2009											
No	Groups	Species	1		2		3		Total		
			Ind. (/0.1m ²)	Wet wt. (g/0.1m ²)	Ind. (/0.1m ²)	Wet wt. (g/0.1m ²)	Ind. (/0.1m ²)	Wet wt. (g/0.1m ²)	Ind. (/0.3m ²)	Wet wt. (g/0.3m ²)	
31	C	<i>Neoxenophthalmus obscurus</i>	1	0.00	3	0.02	2	0.01	6	0.03	
32	C	<i>Tritodynamia longipropodum</i>			1		1	0.30	1	0.30	
33	C	<i>Typhlocarcinus villosus</i>	1	0.04	2	0.28			3	0.32	
34	C	Unidentified juvenile shrimp			1	0.01	1	0.00	2	0.01	
35	C	<i>Xenophthalmus pinnotheroides</i>					1	0.23	1	0.23	
36	M	<i>Nitidotellina iridella</i>	1	0.10					1	0.10	
	Total		120	1.7547	91	1.1171	76	1.1677	287	4.04	

P = Polychaeta, C = Crustacea, M = Mollusca, Ec = Echinodermata, Sp = Sipuncula, Eh = Echiura, Cn = Cnidaria
 Biomass = 0.00 g / 0.1m² : The specimen with total biomass less than 0.01 g / 0.1m²

Appendix II (cont'd) List of collected specimens at every sampling point in wet season

Sampling point: P3 Sampling date: 14/06/2009												
No	Groups	Species	1		2		3		Total			
			Ind. (/0.1m ²)	Wet wt. (g/0.1m ²)	Ind. (/0.1m ²)	Wet wt. (g/0.1m ²)	Ind. (/0.1m ²)	Wet wt. (g/0.1m ²)	Ind. (/0.3m ²)	Wet wt. (g/0.3m ²)		
1	P	<i>Aglaophamus dibranchis</i>			2	0.00	5	0.02	7	0.02		
2	P	<i>Aglaophamus sinensis</i>	2	0.10	2	0.01	2	0.00	6	0.12		
3	P	Aphroditidae spp.	3	0.02			2	0.01	5	0.02		
4	P	<i>Brada</i> sp.	1	0.03					1	0.03		
5	P	<i>Cirriformia</i> sp.	1	0.06					1	0.06		
6	P	<i>Ehlersileanira hwanghatensis</i>			1	0.01	1	0.00	2	0.01		
7	P	<i>Euchymene oerstedii</i>	1	0.00	1	0.00			2	0.01		
8	P	<i>Glycinde gurjanovae</i>	1	0.00			1	0.00	2	0.00		
9	P	<i>Laonice cirrata</i>			1	0.04			1	0.04		
10	P	<i>Lumbrineris shiinoi</i>					1	0.00	1	0.00		
11	P	<i>Mediomastus</i> sp.	4	0.01	5	0.02	15	0.03	24	0.06		
12	P	<i>Notomastus</i> sp.	1	0.00	1	0.00	1	0.00	3	0.01		
13	P	<i>Ophiodromus obscura</i>					1	0.00	1	0.00		
14	P	<i>Phylo ornatus</i>	1	0.00			1	0.00	2	0.00		
15	P	<i>Schistomeringos rudolphi</i>					1	0.00	1	0.00		

P = Polychaeta, C = Crustacea, M = Mollusca, Sp = Sipuncula, Eh = Echiura, F = Fish
 Biomass = 0.00 g / 0.1m² : The specimen with total biomass less than 0.01 g / 0.1m²

Appendix II (cont'd) List of collected specimens at every sampling point in wet season

Sampling point: P3												Sampling date: 14/06/2009					
No	Groups	Species	1		2		3		Total								
			Ind. (/0.1m ²)	Wet wt. (g/0.1m ²)	Ind. (/0.1m ²)	Wet wt. (g/0.1m ²)	Ind. (/0.1m ²)	Wet wt. (g/0.1m ²)	Ind. (/0.3m ²)	Wet wt. (g/0.3m ²)							
16	Sp	<i>Apionsoma trichocephalus</i>			2	0.01	1	0.00	3	0.01							
17	Eh	<i>Thalassema sabinum</i>	7	3.68	6	2.75	5	1.49	18	7.92							
18	C	<i>Neoxenophthalmus obscurus</i>					1	0.19	1	0.19							
19	C	<i>Raphidopus ciliatus</i>	6	0.47	1	0.24	1	0.10	8	0.81							
20	C	<i>Tritodynamia longipropodum</i>	2	0.17	1	0.03			3	0.20							
21	M	<i>Angulus vestalioides</i>			2	0.12			2	0.12							
22	M	<i>Nudibranch spp.</i>	1	0.01					1	0.01							
23	F	<i>Cryptocentrus filifer</i>			1	0.01			1	0.01							
	Total		31	4.571	26	3.2402	39	1.8383	96	9.65							

P = Polychaeta, C = Crustacea, M = Mollusca, Sp = Sipuncula, Eh = Echiura, F = Fish
 Biomass = 0.00 g / 0.1m² : The specimen with total biomass less than 0.01 g / 0.1m²

Appendix II (cont'd) List of collected specimens at every sampling point in wet season

		Sampling point: P4						Sampling date: 14/06/2009					
No	Groups	Species	1		2		3		Total				
			Ind. (/0.1m ²)	Wet wt. (g/0.1m ²)	Ind. (/0.1m ²)	Wet wt. (g/0.1m ²)	Ind. (/0.1m ²)	Wet wt. (g/0.1m ²)	Ind. (/0.3m ²)	Wet wt. (g/0.3m ²)			
1	P	<i>Aglaophamus dibranchis</i>	5	0.01			2	0.00	7	0.02			
2	P	<i>Aglaophamus sinensis</i>	1	0.00	1	0.00			2	0.01			
3	P	Aphroditidae spp.	1	0.02			1	0.00	2	0.02			
4	P	<i>Brada</i> sp.					1	0.00	1	0.00			
5	P	<i>Ehlersileanira hwanghaiensis</i>			1	0.00			1	0.00			
6	P	<i>Euchymene oerstedii</i>			3	0.00	1	0.00	4	0.01			
7	P	<i>Glycera chirori</i>	1	0.02					1	0.02			
8	P	<i>Harmothoe imbricata</i>	1	0.01					1	0.01			
9	P	<i>Loimia medusa</i>			1	0.00			1	0.00			
10	P	<i>Lumbrineris shiinoi</i>	2	0.00	1	0.00			3	0.01			
11	P	<i>Mediomastus</i> sp.	17	0.02	5	0.01	6	0.01	28	0.05			
12	P	<i>Notomastus</i> sp.	2	0.01	1	0.00			3	0.01			
13	P	<i>Sigambra hanaokai</i>			1	0.00	1	0.00	2	0.00			
14	P	<i>Sternaspis sculata</i>	1	0.01					1	0.01			
15	Sp	<i>Apionsoma trichocephalus</i>			2	0.00			2	0.00			

P = Polychaeta, C = Crustacea, M = Mollusca, Sp = Sipuncula, Eh = Echiura, N = Nemertea
 Biomass = 0.00 g / 0.1m² : The specimen with total biomass less than 0.01 g / 0.1m²

Appendix II (cont'd) List of collected specimens at every sampling point in wet season

Sampling point: P4												Sampling date: 14/06/2009			
No	Groups	Species	1		2		3		Total						
			Ind. (/0.1m ²)	Wet wt. (g/0.1m ²)	Ind. (/0.1m ²)	Wet wt. (g/0.1m ²)	Ind. (/0.1m ²)	Wet wt. (g/0.1m ²)	Ind. (/0.3m ²)	Wet wt. (g/0.3m ²)					
16	N	Nemertean spp.			1	0.01				1	0.01				
17	Eh	<i>Thalassema sabinum</i>	6	2.16	5	2.45	12	5.11		23	9.72				
18	C	Amphipod spp.			1	0.00				1	0.00				
19	C	<i>Ne xenophthalmus obscurus</i>	2	0.38	2	0.53	1	0.17		5	1.08				
20	C	<i>Raphidopus ciliatus</i>	1	0.21	2	0.55	2	0.14		5	0.90				
21	C	<i>Tritodynamia longipropodum</i>	1	0.10	1	0.11	2	0.24		4	0.45				
22	C	<i>Typhlocarcinus villosus</i>	2	0.15	1	0.09	2	0.42		5	0.66				
23	M	<i>Mabellarca consociata</i>			1	0.48	1	0.33		2	0.81				
	Total		43	3.1126	30	4.2446	32	6.4353		105	13.79				

P = Polychaeta, C = Crustacea, M = Mollusca, Sp = Sipuncula, Eh = Echiura, N = Nemeritea
 Biomass = 0.00 g / 0.1m² : The specimen with total biomass less than 0.01 g / 0.1m²

Appendix II (cont'd) List of collected specimens at every sampling point in wet season

Sampling point: P5												Sampling date: 14/06/2009					
No	Groups	Species	1		2		3		Total								
			Ind. (/0.1m ²)	Wet wt. (g/0.1m ²)	Ind. (/0.1m ²)	Wet wt. (g/0.1m ²)	Ind. (/0.1m ²)	Wet wt. (g/0.1m ²)	Ind. (/0.3m ²)	Wet wt. (g/0.3m ²)							
1	P	<i>Acrocirrus</i> sp.			1	0.03					1	0.03					
2	P	<i>Aglaophamus dibranchis</i>	2	0.02							2	0.02					
3	P	<i>Aglaophamus sinensis</i>			3	0.03	3	0.07			6	0.10					
4	P	<i>Aphroditidae</i> spp.	1	0.00							1	0.00					
5	P	<i>Bhawania brevis</i>	1	0.00							1	0.00					
6	P	<i>Ehlersileanira hwanghatensis</i>						1	0.00		1	0.00					
7	P	<i>Euchymene oerstedii</i>			2	0.02					2	0.02					
8	P	<i>Glycera chirori</i>	1	0.03	2	0.03					3	0.05					
9	P	<i>Glycera tridactyla</i>						1	0.11		1	0.11					
10	P	<i>Glycinde gurjanovae</i>	1	0.00							1	0.00					
11	P	<i>Laonice cirrata</i>			1	0.02					1	0.02					
12	P	<i>Loimia medusa</i>			1	0.25					1	0.25					
13	P	<i>Lumbrineris nageae</i>	1	0.00							1	0.00					
14	P	<i>Lumbrineris shiinoi</i>	3	0.01	2	0.00					5	0.01					
15	P	<i>Mediomastus</i> sp.	13	0.03	6	0.02	6	0.02			25	0.06					

P = Polychaeta, C = Crustacea, M = Mollusca, Ec = Echinodermata, Sp = Sipuncula, Eh = Echiura, N = Nemertea, F= Fish
 Biomass = 0.00 g / 0.1m² : The specimen with total biomass less than 0.01 g / 0.1m²

Appendix II (cont'd) List of collected specimens at every sampling point in wet season

		Sampling point: P5						Sampling date: 14/06/2009					
No	Groups	Species	1		2		3		Total				
			Ind. (/0.1m ²)	Wet wt. (g/0.1m ²)	Ind. (/0.1m ²)	Wet wt. (g/0.1m ²)	Ind. (/0.1m ²)	Wet wt. (g/0.1m ²)	Ind. (/0.3m ²)	Wet wt. (g/0.3m ²)			
16	P	<i>Notomastus</i> sp.					1	0.00		1	0.00		
17	P	<i>Otopsis</i> sp.	1	0.00			1	0.00		2	0.00		
18	P	<i>Pectinaria conchilega</i>	1	0.01						1	0.01		
19	P	<i>Sigambra hanaokai</i>			1	0.00	2	0.00		3	0.00		
20	P	<i>Sternaspis sculata</i>	2	0.01	4	0.01	2	0.01		8	0.03		
21	Sp	<i>Apionsoma trichocephalus</i>					2	0.01		2	0.01		
22	N	Nemertean spp.	1	0.00			2	0.00		3	0.01		
23	Eh	<i>Thalassema sabinum</i>	1	0.11	2	0.03				3	0.13		
24	Ec	<i>Acaudina molpadioides</i>			1	0.13				1	0.13		
25	Ec	<i>Amphiura hexactis</i>	1	0.02			2	0.02		3	0.04		
26	C	<i>Callianassa japonica</i>					1	0.06		1	0.06		
27	C	<i>Clorida latreillei</i>	1	0.02						1	0.02		
28	C	<i>Neoxenophthalmus obscurus</i>			3	0.37	3	0.47		6	0.84		
29	C	<i>Processa japonica</i>			1	0.01				1	0.01		
30	C	<i>Tritodynamia longipropodum</i>					1	0.01		1	0.01		

P = Polychaeta, C = Crustacea, M = Mollusca, Ec = Echinodermata, Sp = Sipuncula, Eh = Echiura, N = Nemertea, F= Fish
 Biomass = 0.00 g / 0.1m² : The specimen with total biomass less than 0.01 g / 0.1m²

Appendix II (cont'd) List of collected specimens at every sampling point in wet season

Sampling point: P5 Sampling date: 14/06/2009											
No	Groups	Species	1		2		3		Total		
			Ind.	Wet wt. (g/0.1m ²)	Ind.	Wet wt. (g/0.1m ²)	Ind.	Wet wt. (g/0.1m ²)	Ind.	Wet wt. (g/0.3m ²)	
31	M	<i>Macoma candida</i>			1	7.93			1	7.93	
32	M	<i>Nitidotellina iridella</i>						1	0.19	0.19	
33	M	<i>Nitidotellina minuta</i>			1	0.04			1	0.04	
34	F	<i>Muraenichthys</i> sp.			1	4.02			1	4.02	
			31	0.25	33	12.9405	29	0.9768	93	14.17	

P = Polychaeta, C = Crustacea, M = Mollusca, Ec = Echinodermata, Sp = Sipuncula, Eh = Echiura, N = Nemertea, F= Fish
 Biomass = 0.00 g / 0.1m² : The specimen with total biomass less than 0.01 g / 0.1m²