

DATE: 2011-10-11
FENGYL

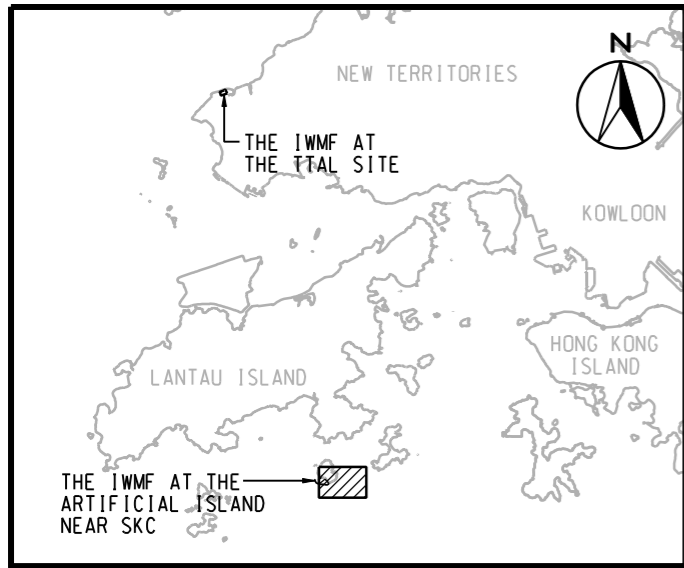


ENGINEERING INVESTIGATION AND ENVIRONMENTAL STUDIES FOR INTEGRATED WASTE MANAGEMENT FACILITIES PHASE I - FEASIBILITY STUDY

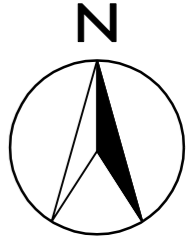
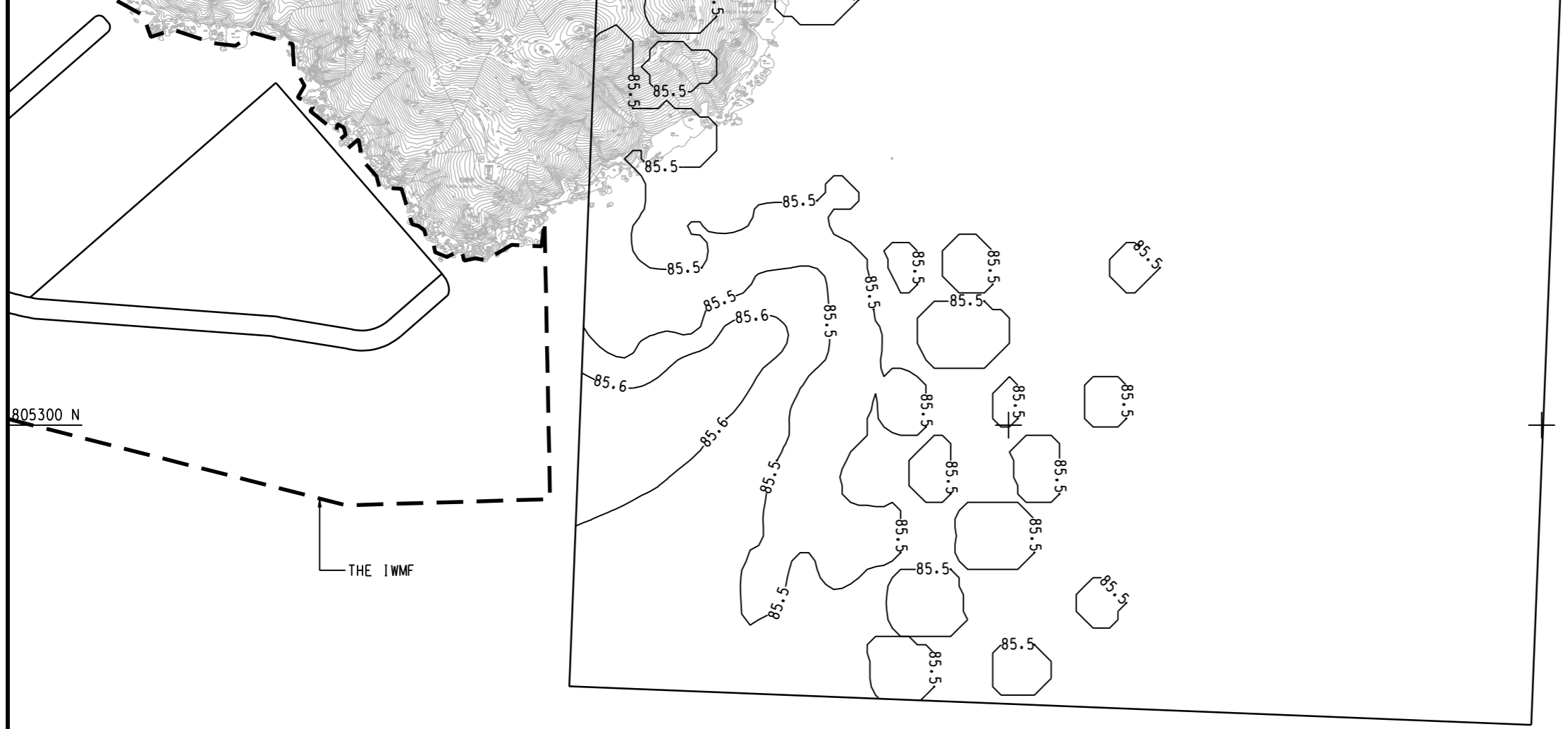
CONTOURS OF CUMULATIVE MAXIMUM DAILY AVERAGE RSP CONCENTRATION IN $\mu\text{g}/\text{m}^3$ - SHEK KWU CHAU AND CHEUNG CHAU (CO-EXIST SCENARIO: TTAL SITE & ARTIFICIAL ISLAND NEAR SKC)

(SHEET 1 OF 6)

SCALE	A3 1:8000	DATE	DEC. 2010
CHECK	-	DRAWN	YJP
JOB No.	60051148	DRAWING No.	FIGURE 3c.6e
		REV	-



LOCATION PLAN
SCALE A3 1:500000

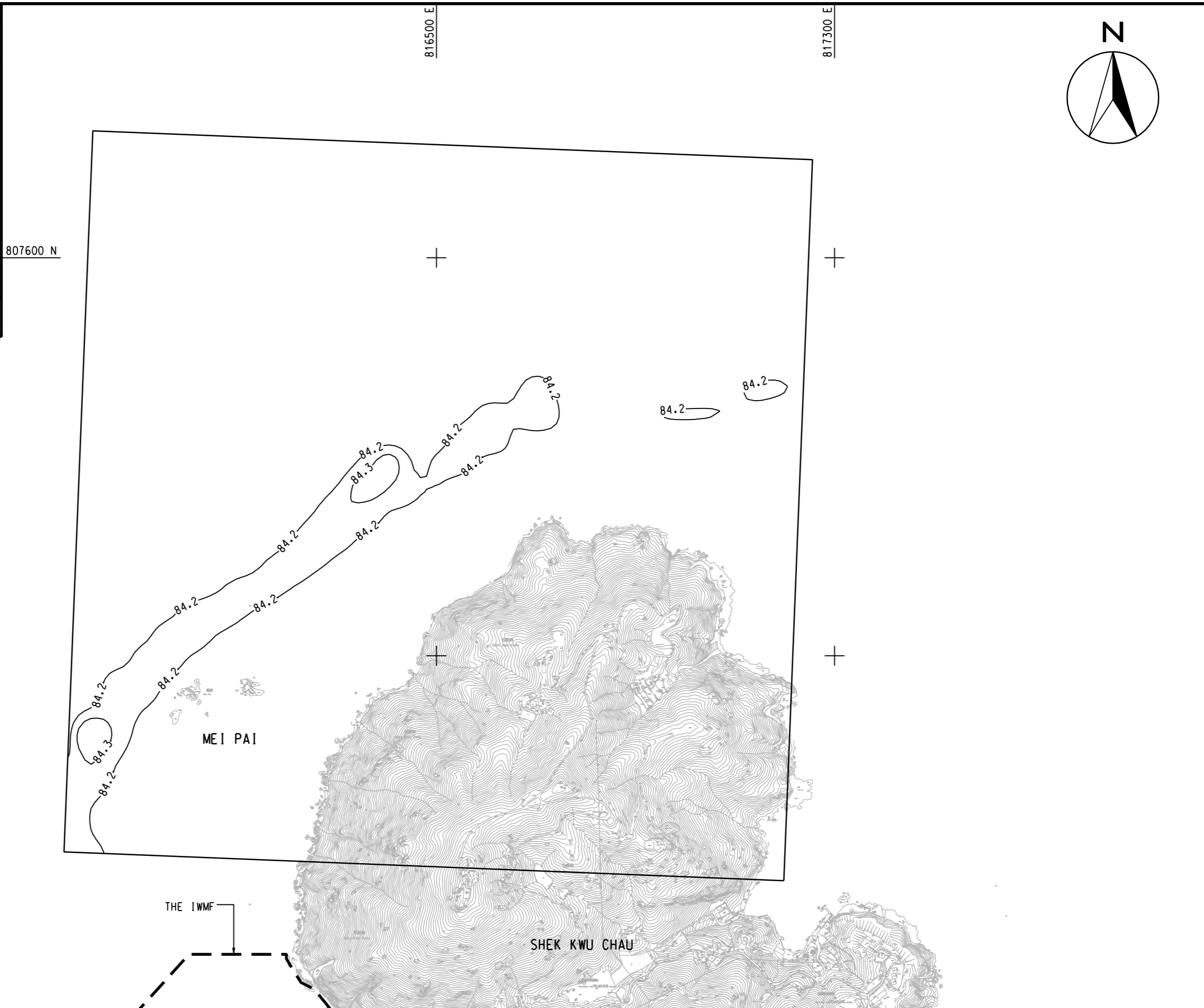
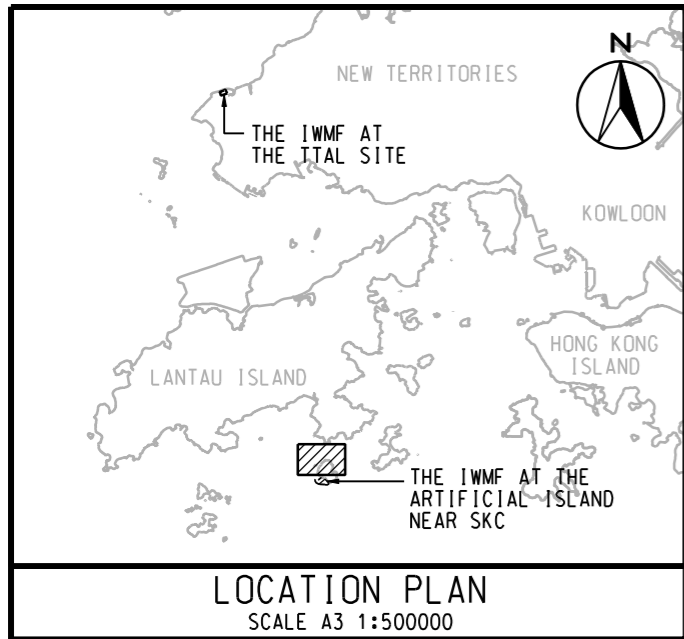


DATE: 2011-10-11 FENGYL



ENGINEERING INVESTIGATION AND ENVIRONMENTAL STUDIES FOR INTEGRATED WASTE MANAGEMENT FACILITIES PHASE I - FEASIBILITY STUDY
CONTOURS OF CUMULATIVE MAXIMUM DAILY AVERAGE RSP CONCENTRATION IN $\mu\text{g}/\text{m}^3$ - SHEK KWU CHAU AND CHEUNG CHAU (CO-EXIST SCENARIO: TTAL SITE & ARTIFICIAL ISLAND NEAR SKC)
 (SHEET 2 OF 6)

SCALE	A3 1:8000	DATE	DEC. 2010
CHECK	-	DRAWN	DXL
JOB No.	60051148	DRAWING No.	FIGURE 3c.6e
		REV	-

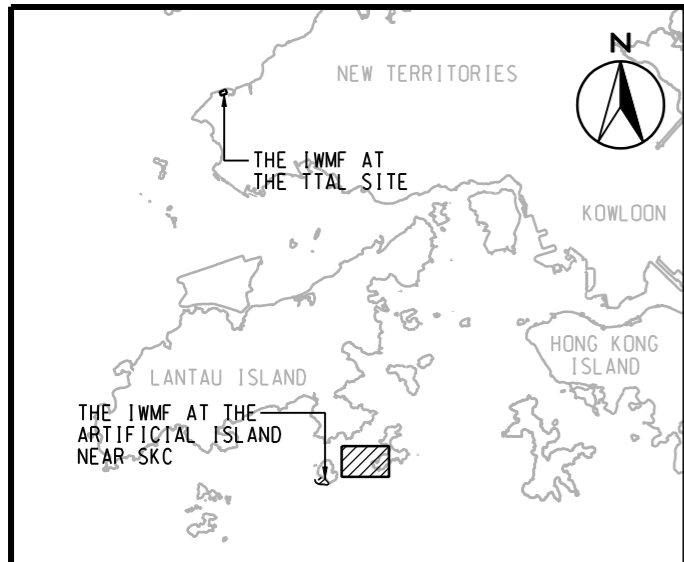


DATE: 2011-10-11
FENGYL



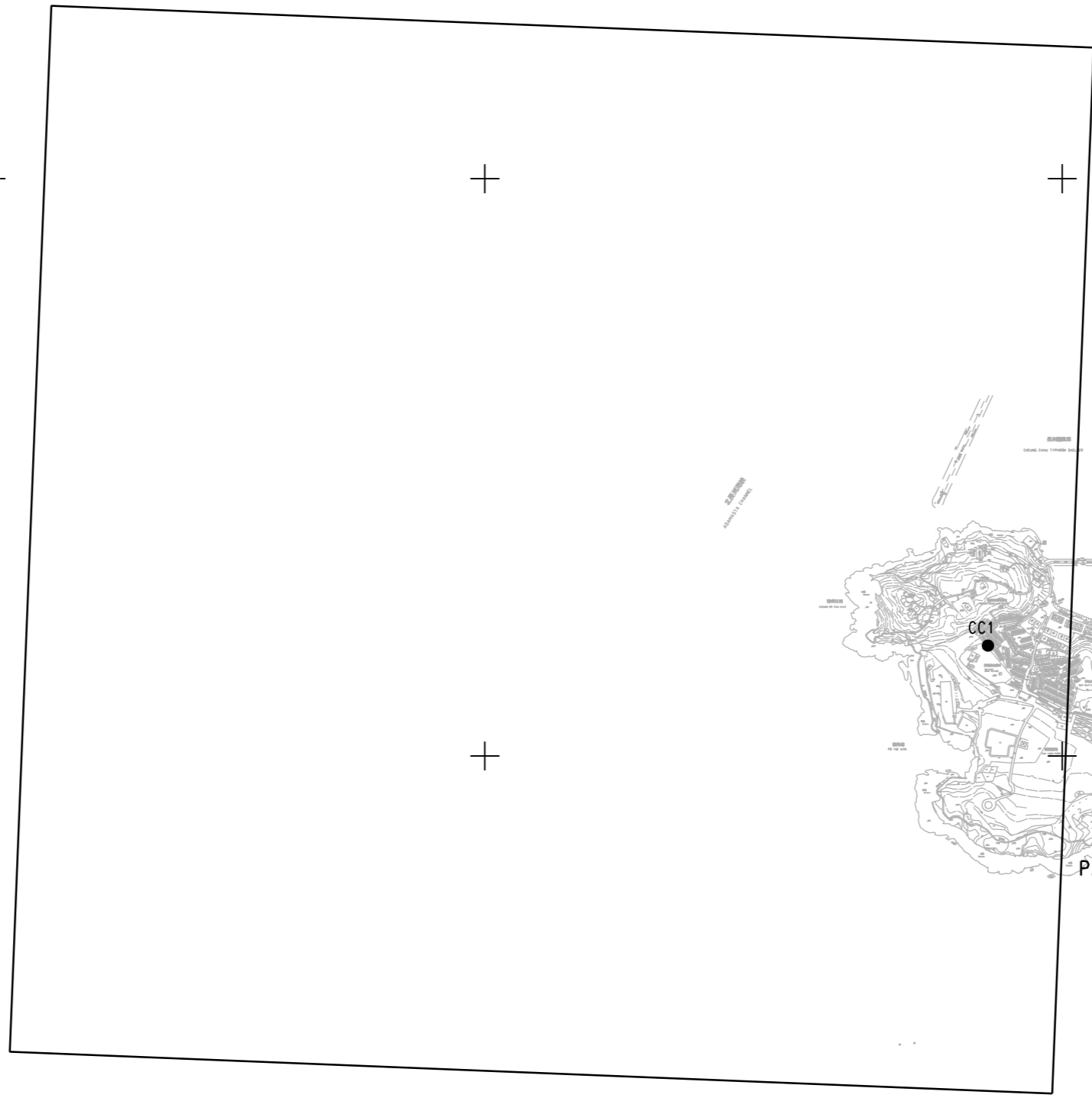
ENGINEERING INVESTIGATION AND ENVIRONMENTAL STUDIES FOR INTEGRATED WASTE MANAGEMENT FACILITIES PHASE I - FEASIBILITY STUDY
CONTOURS OF CUMULATIVE MAXIMUM DAILY AVERAGE RSP CONCENTRATION IN $\mu\text{g}/\text{m}^3$ - SHEK KWU CHAU AND CHEUNG CHAU (CO-EXIST SCENARIO: TTAL SITE & ARTIFICIAL ISLAND NEAR SKC)
 (SHEET 3 OF 6)

SCALE	A3 1:8000	DATE	DEC. 2010
CHECK	-	DRAWN	DXL
JOB No.	60051148	DRAWING No.	FIGURE 3c.6e
		REV	-



LOCATION PLAN
SCALE A3 1:500000

807500 N



806700 N

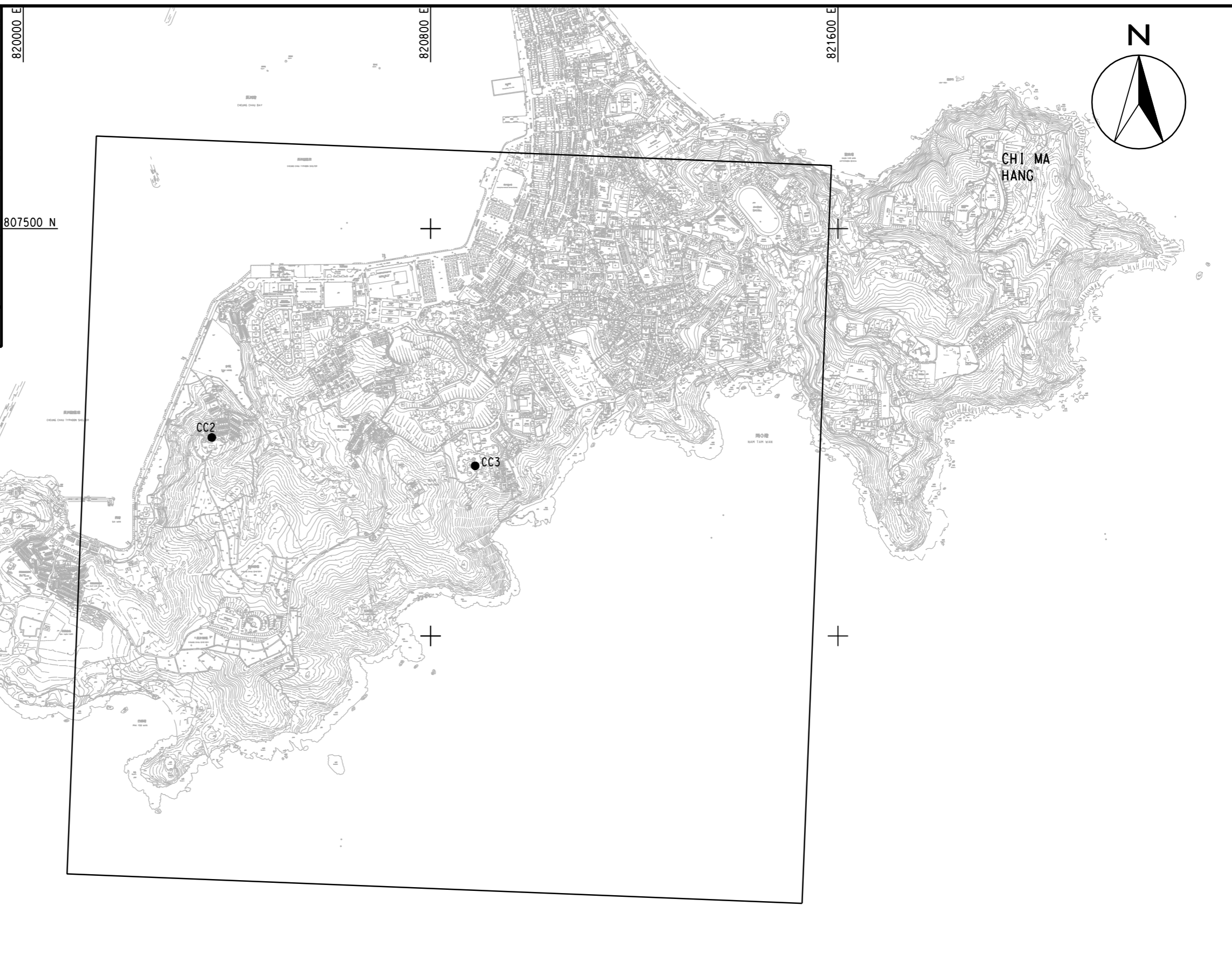
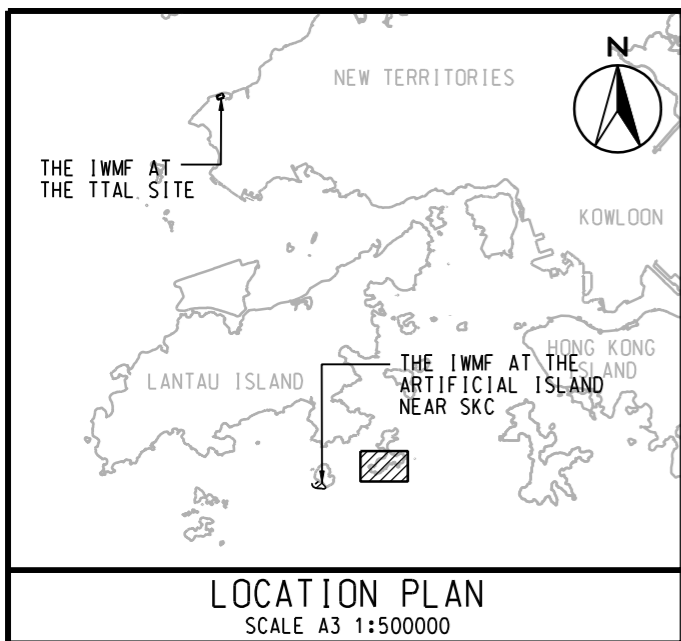
NOTE:
1. CUMULATIVE MAXIMUM DAILY AVERAGE RSP VALUES FOR ALL POINTS IN THIS GRID IS $86\mu\text{g}/\text{m}^3$. THEREFORE NO CONTOUR LINES CAN BE IDENTIFIED.

DATE: 2011-10-11 FENGYL



ENGINEERING INVESTIGATION AND ENVIRONMENTAL STUDIES FOR INTEGRATED WASTE MANAGEMENT FACILITIES PHASE I - FEASIBILITY STUDY
CONTOURS OF CUMULATIVE MAXIMUM DAILY AVERAGE RSP CONCENTRATION IN $\mu\text{g}/\text{m}^3$ - SHEK KWU CHAU AND CHEUNG CHAU (CO-EXIST SCENARIO: TTAL SITE & ARTIFICIAL ISLAND NEAR SKC)
 (SHEET 4 OF 6)

SCALE	A3 1:8000	DATE	OCT. 2011
CHECK	-	DRAWN	DXL
JOB No.	60051148	DRAWING No.	FIGURE 3c.6e
		REV	-



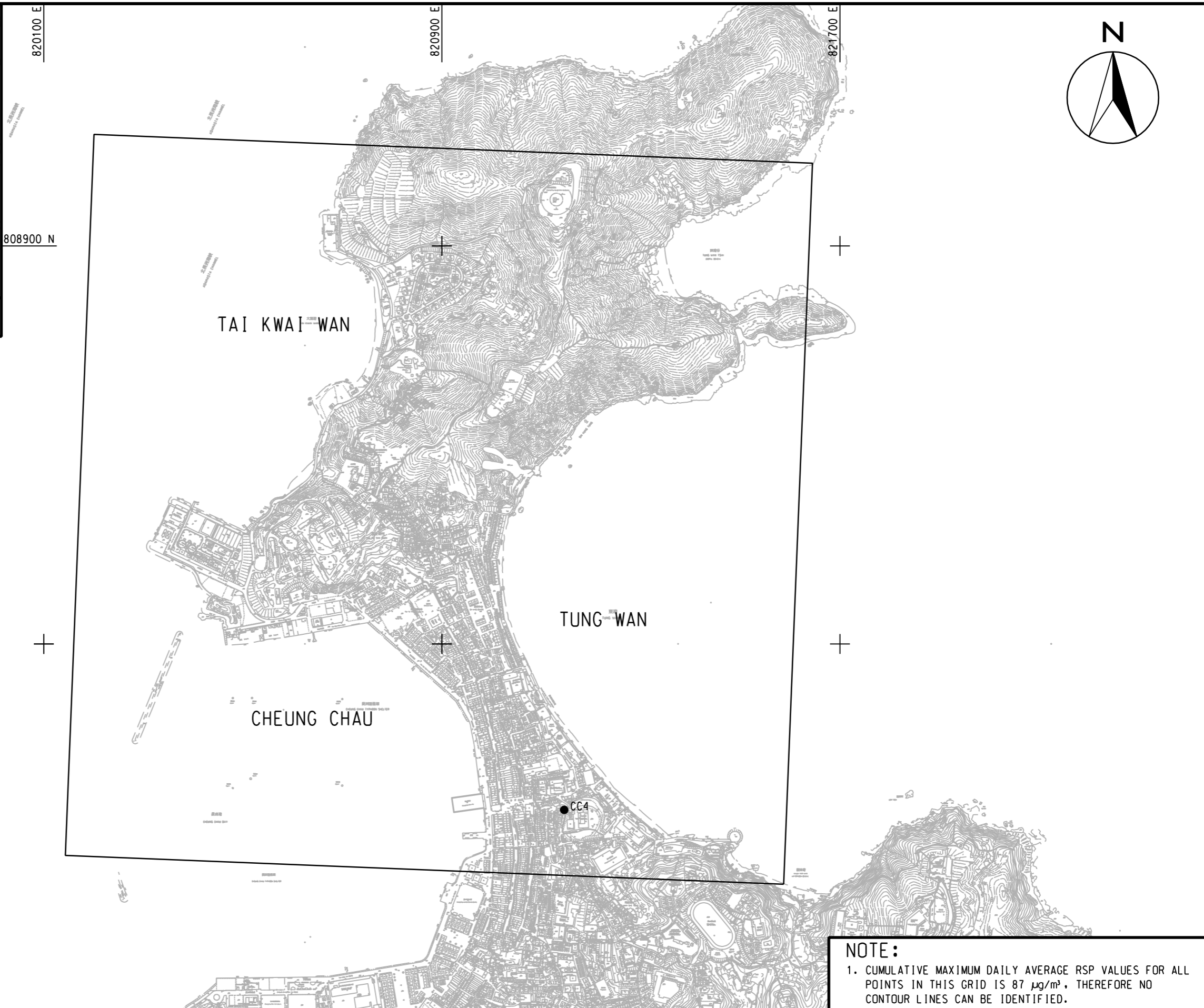
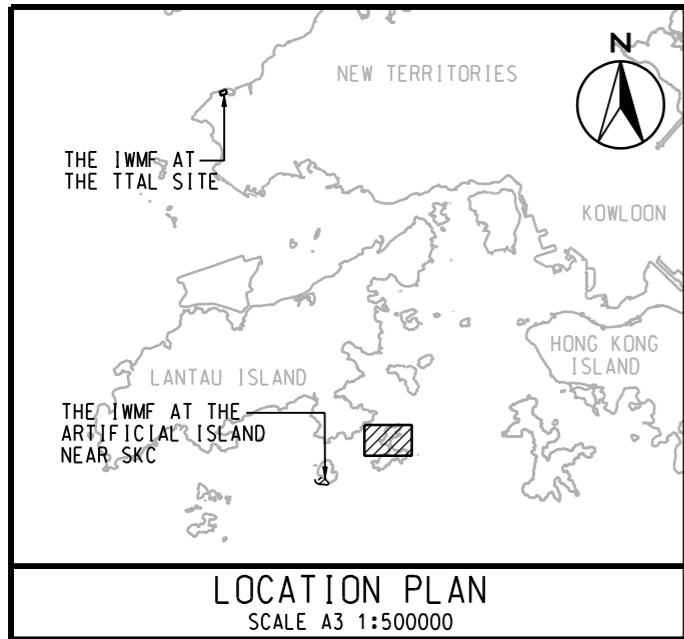
NOTE:
1. CUMULATIVE MAXIMUM DAILY AVERAGE RSP VALUES FOR ALL POINTS IN THIS GRID IS $87\mu\text{g}/\text{m}^3$. THEREFORE NO CONTOUR LINES CAN BE IDENTIFIED.

DATE: 2011-10-11 FENGYL



ENGINEERING INVESTIGATION AND ENVIRONMENTAL STUDIES FOR INTEGRATED WASTE MANAGEMENT FACILITIES PHASE I - FEASIBILITY STUDY
CONTOURS OF CUMULATIVE MAXIMUM DAILY AVERAGE RSP CONCENTRATION IN $\mu\text{g}/\text{m}^3$ - SHEK KWU CHAU AND CHEUNG CHAU (CO-EXIST SCENARIO: TTAL SITE & ARTIFICIAL ISLAND NEAR SKC)
 (SHEET 5 OF 6)

SCALE	A3 1:8000	DATE	OCT. 2011
CHECK	-	DRAWN	DXL
JOB No.	60051148	DRAWING No.	FIGURE 3c.6e
		REV	-



NOTE:
1. CUMULATIVE MAXIMUM DAILY AVERAGE RSP VALUES FOR ALL POINTS IN THIS GRID IS $87 \mu\text{g}/\text{m}^3$, THEREFORE NO CONTOUR LINES CAN BE IDENTIFIED.

DATE: 2011-10-11 FENGYL



ENGINEERING INVESTIGATION AND ENVIRONMENTAL STUDIES FOR INTEGRATED WASTE MANAGEMENT FACILITIES PHASE I - FEASIBILITY STUDY
CONTOURS OF CUMULATIVE MAXIMUM DAILY AVERAGE RSP CONCENTRATION IN $\mu\text{g}/\text{m}^3$ - SHEK KWU CHAU AND CHEUNG CHAU (CO-EXIST SCENARIO: TTAL SITE & ARTIFICIAL ISLAND NEAR SKC)
 (SHEET 6 OF 6)

SCALE	A3 1:8000	DATE	OCT. 2011
CHECK	-	DRAWN	ZRH
JOB No.	60051148	DRAWING No.	FIGURE 3c.6e
		REV	-