

LEGEND:



PROPOSED WORKS



ZONE OF VISUAL INFLUENCE



VSR1 VISUAL SENSITIVE RECEIVER

VSR1

FOOTPATH UPHILL

VSR2

NIM WAN ROAD

VSR3

SLUDGE TREATMENT FACILITY

VSR4

SEA OF DEEP BAY

VSR5

HA PAK LAI

VSR6

BLACK POINT POWER STATION

POTENTIAL SITE FOR INTEGRATED WASTE MANAGEMENT FACILITIES (IWMF)

SITE FOR SLUDGE TREATMENT FACILITIES (STF)

PROPOSED WASTE LANDFILL EXTENSION SITE B

EXISTING WASTE LANDFILL

BLACK POINT POWER STATION

VSR6

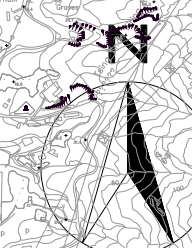
VSR4

VSR3

VSR1

VSR2

VSR5



808700 E

810200 E

811700 E

831900 N

830400 N

DATE: \$DATE\$



AGREEMENT NO. CE 29/2008 (EP)
 ENGINEERING INVESTIGATION AND ENVIRONMENTAL STUDIES FOR INTEGRATED WASTE MANAGEMENT FACILITIES PHASE 1 - FEASIBILITY STUDY
IWMF AT TSANG TSUI ASH LAGOONS SITE - VISUAL SENSITIVE RECEIVER PLAN

SCALE	A3 1:15000	DATE	DEC 2010
CHECK	-	DRAWN	-
JOB No.	-	DRAWING No.	FIGURE 10a.7
		REV	-

\$FILE\$