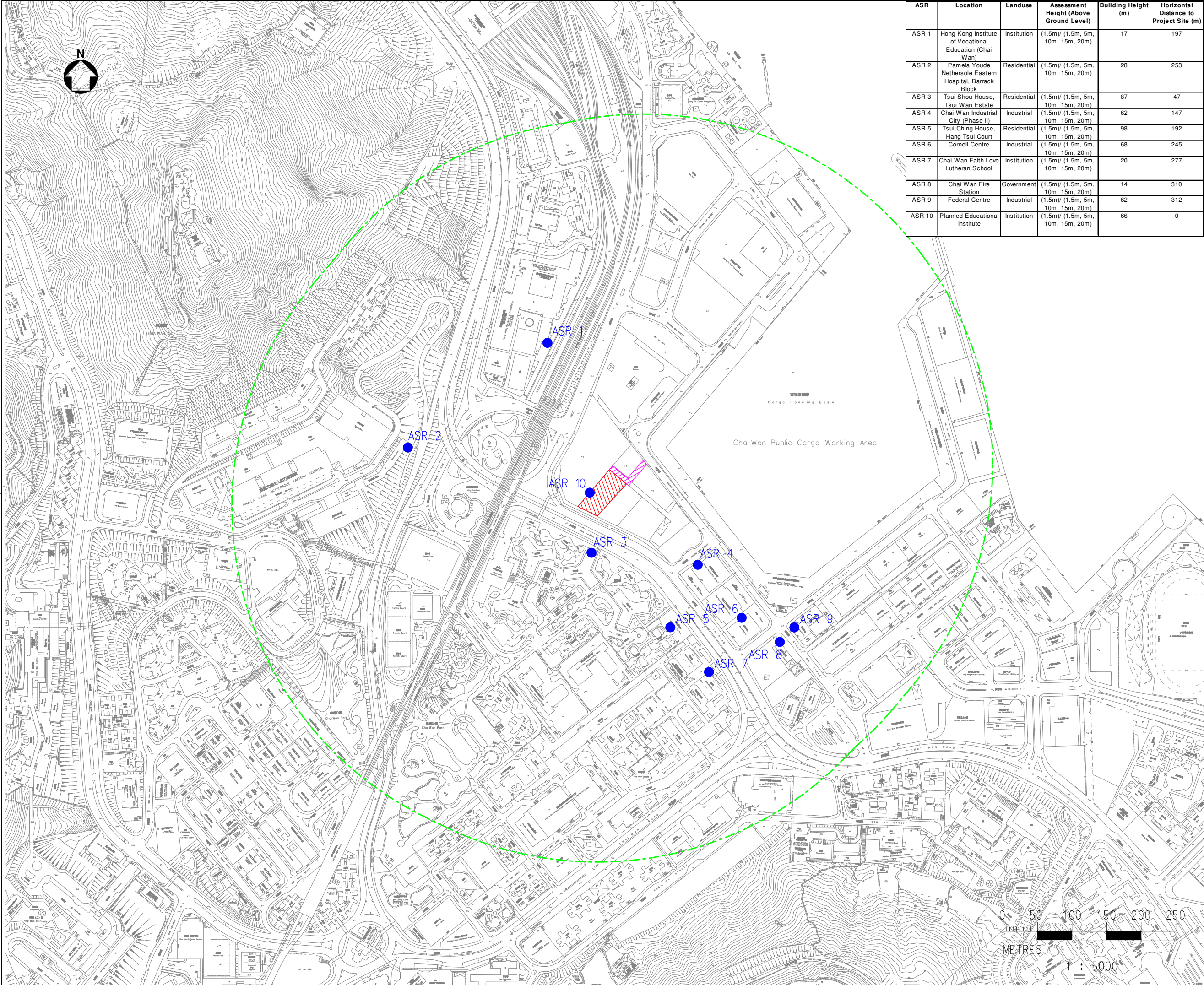


PLOT DRW: K:\9253\CAD Admin\43\_colour.plt  
MODELNAME: Default  
FILENAME: K:\9253 Drawings\Indeia\Figure 3.dgn  
3/23/202 10:53:01 AM  
mmtemp2



ASR	Location	Landuse	Assessment Height (Above Ground Level)	Building Height (m)	Horizontal Distance to Project Site (m)
ASR 1	Hong Kong Institute of Vocational Education (Chai Wan)	Institution	(1.5m)/ (1.5m, 5m, 10m, 15m, 20m)	17	197
ASR 2	Pamela Youde Nehersole Eastern Hospital, Barrack Block	Residential	(1.5m)/ (1.5m, 5m, 10m, 15m, 20m)	28	253
ASR 3	Tsui Shou House, Tsui Wan Estate	Residential	(1.5m)/ (1.5m, 5m, 10m, 15m, 20m)	87	47
ASR 4	Chai Wan Industrial City (Phase II)	Industrial	(1.5m)/ (1.5m, 5m, 10m, 15m, 20m)	62	147
ASR 5	Tsui Ching House, Hang Tsui Court	Residential	(1.5m)/ (1.5m, 5m, 10m, 15m, 20m)	98	192
ASR 6	Cornell Centre	Industrial	(1.5m)/ (1.5m, 5m, 10m, 15m, 20m)	68	245
ASR 7	Chai Wan Faith Love Lutheran School	Institution	(1.5m)/ (1.5m, 5m, 10m, 15m, 20m)	20	277
ASR 8	Chai Wan Fire Station	Government	(1.5m)/ (1.5m, 5m, 10m, 15m, 20m)	14	310
ASR 9	Federal Centre	Industrial	(1.5m)/ (1.5m, 5m, 10m, 15m, 20m)	62	312
ASR 10	Planned Educational Institute	Institution	(1.5m)/ (1.5m, 5m, 10m, 15m, 20m)	66	0

LEGEND:

NON EXCLUSIVE RIGHT OF WAY

SITE BOUNDARY

500m STUDY AREA

ASR 1

REPRESENTATIVE AIR SENSITIVE RECEIVER

Rev	Issue State	Amendment	By	Chk.	App.	Date
Client						
機電工程署 EMSD						
建築署 Architectural Services Department						
MEINHARDT Meinhardt Infrastructure and Environment Limited 邁進基礎環境工程顧問有限公司						
Project						
Quotation No. ASD/PSB/PM1/PM14/01/11 Consultancy Services for Application for Environmental Permit under the Environmental Impact Assessment Ordinance for Construction of EMSD Hong Kong Workshop at Sheung On Street, Chai Wan						
Title						
LOCATIONS OF THE REPRESENTATIVE AIR SENSITIVE RECEIVERS						
Drawn						
Scale 1:5000						
First Issued						
CAD File No.						
Figure No.						
5.1						
Rev.						
Copyright Reserved						