

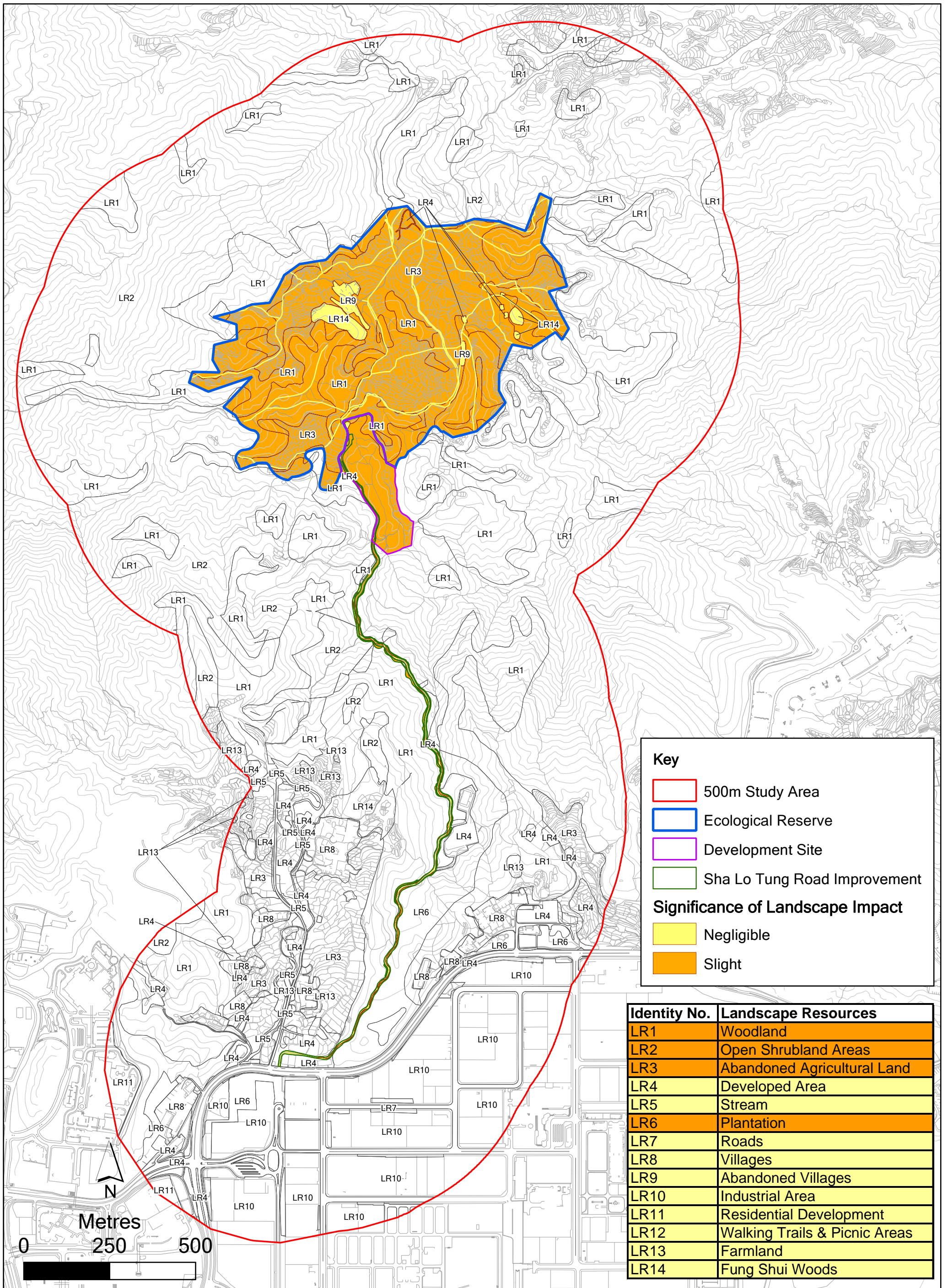
Figure 10.6

Residual Landscape Resource Impacts during Construction

File: Oct2011\0099337_Landscape_Impact_Construction.mxd
Date: 05/01/2012

Environmental
Resources
Management





Key

- 500m Study Area
- Ecological Reserve
- Development Site
- Sha Lo Tung Road Improvement

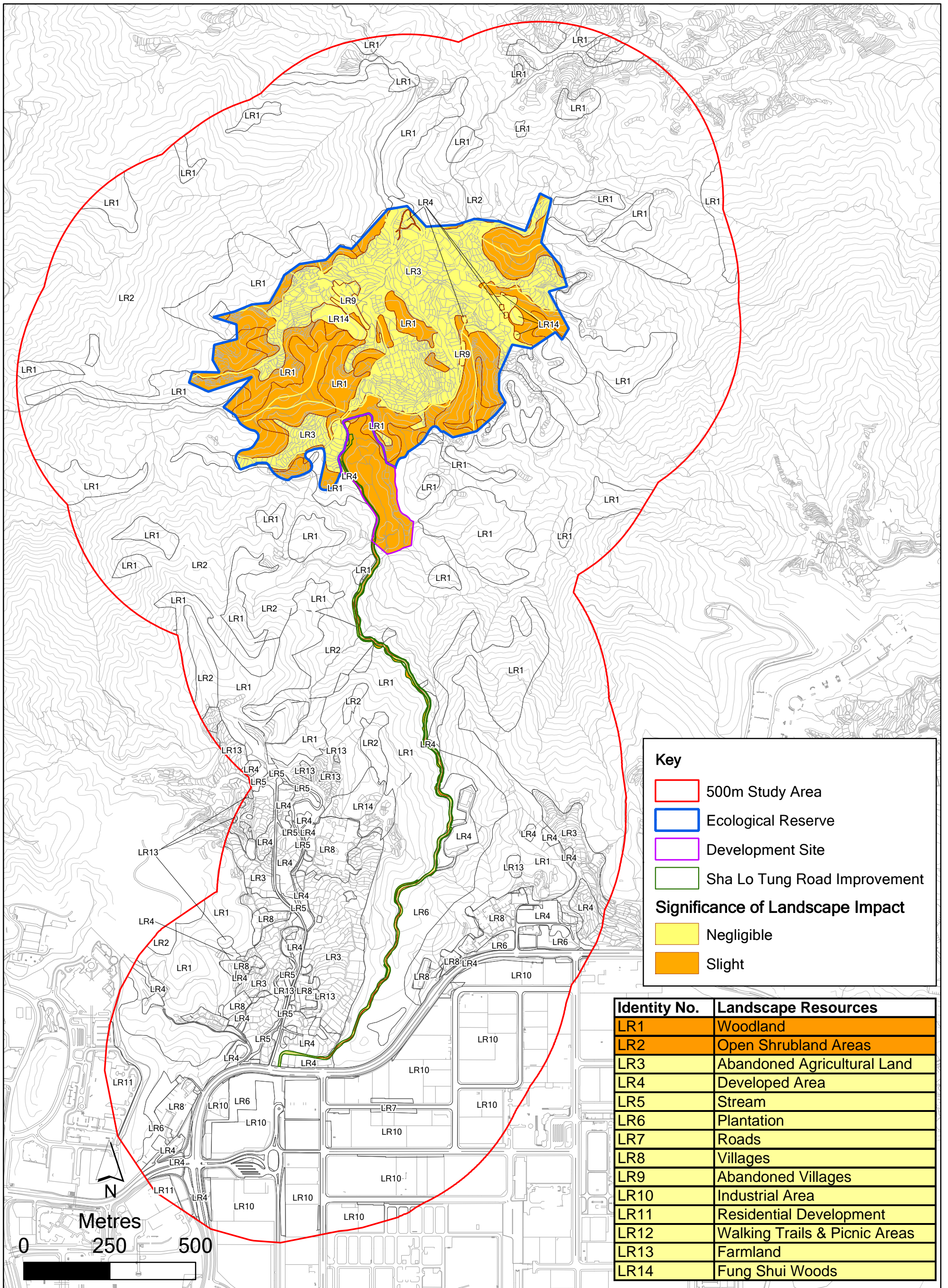
Significance of Landscape Impact

- Negligible
- Slight

Identity No.	Landscape Resources
LR1	Woodland
LR2	Open Shrubland Areas
LR3	Abandoned Agricultural Land
LR4	Developed Area
LR5	Stream
LR6	Plantation
LR7	Roads
LR8	Villages
LR9	Abandoned Villages
LR10	Industrial Area
LR11	Residential Development
LR12	Walking Trails & Picnic Areas
LR13	Farmland
LR14	Fung Shui Woods

Figure 10.7 Residual Landscape Resource Impacts at Day 1 of Operation

File: Oct2011\0099337_Landscape_Impact_Day1.mxd
Date: 05/01/2012



Key

- 500m Study Area
- Ecological Reserve
- Development Site
- Sha Lo Tung Road Improvement

Significance of Landscape Impact

- Negligible
- Slight

Identity No.	Landscape Resources
LR1	Woodland
LR2	Open Shrubland Areas
LR3	Abandoned Agricultural Land
LR4	Developed Area
LR5	Stream
LR6	Plantation
LR7	Roads
LR8	Villages
LR9	Abandoned Villages
LR10	Industrial Area
LR11	Residential Development
LR12	Walking Trails & Picnic Areas
LR13	Farmland
LR14	Fung Shui Woods

Figure 10.8
Residual Landscape Resource Impacts at Year 10 of Operation

File: Oct2011\0099337_
Landscape_Impact_Year10.mxd
Date: 05/01/2012