

Figure 10.9

Residual Landscape Character Impacts during Construction

File: Oct2011\0099337\_  
Character\_Construction.mxd  
Date: 05/01/2012

Environmental  
Resources  
Management





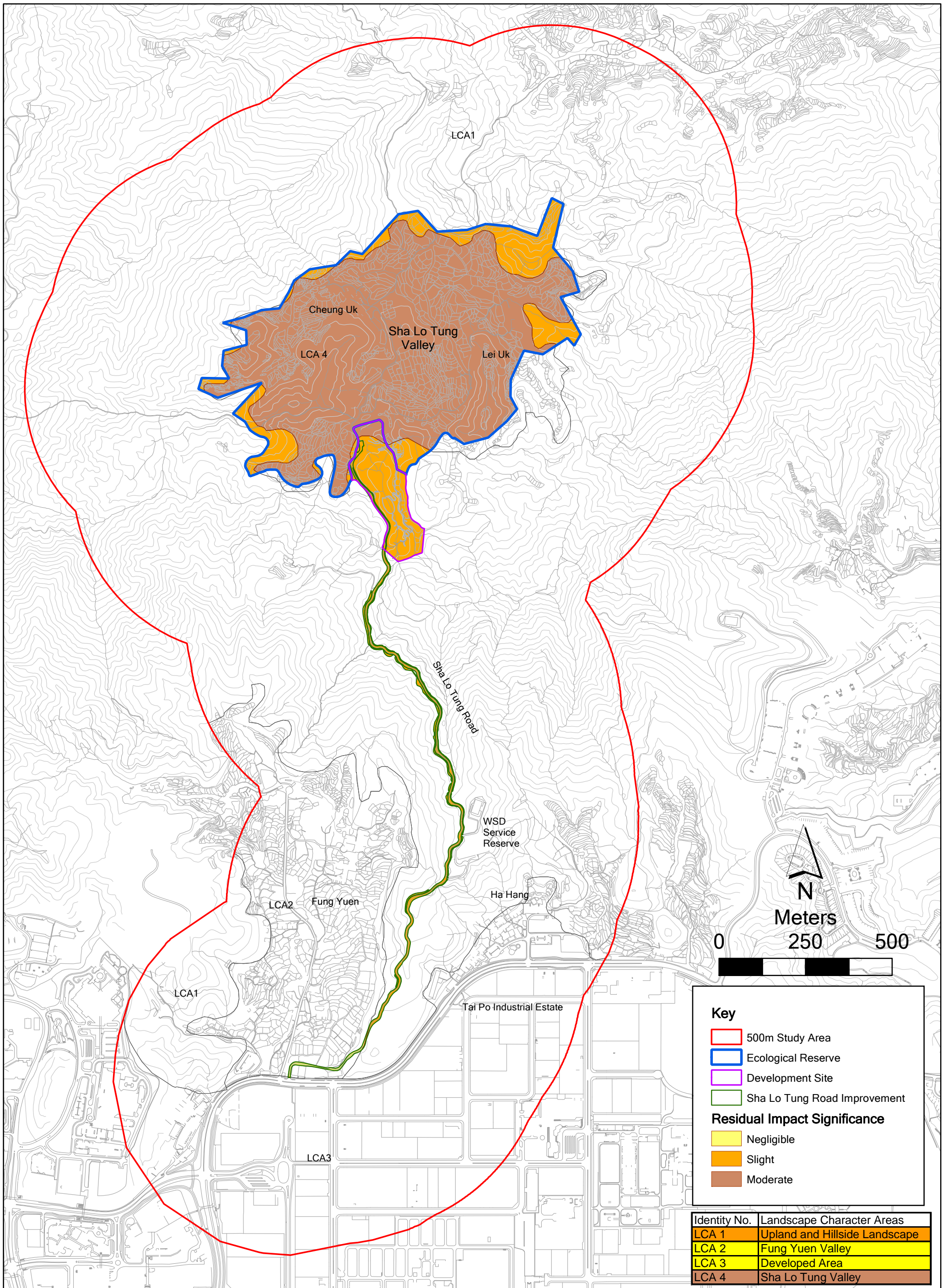


Figure 10.10

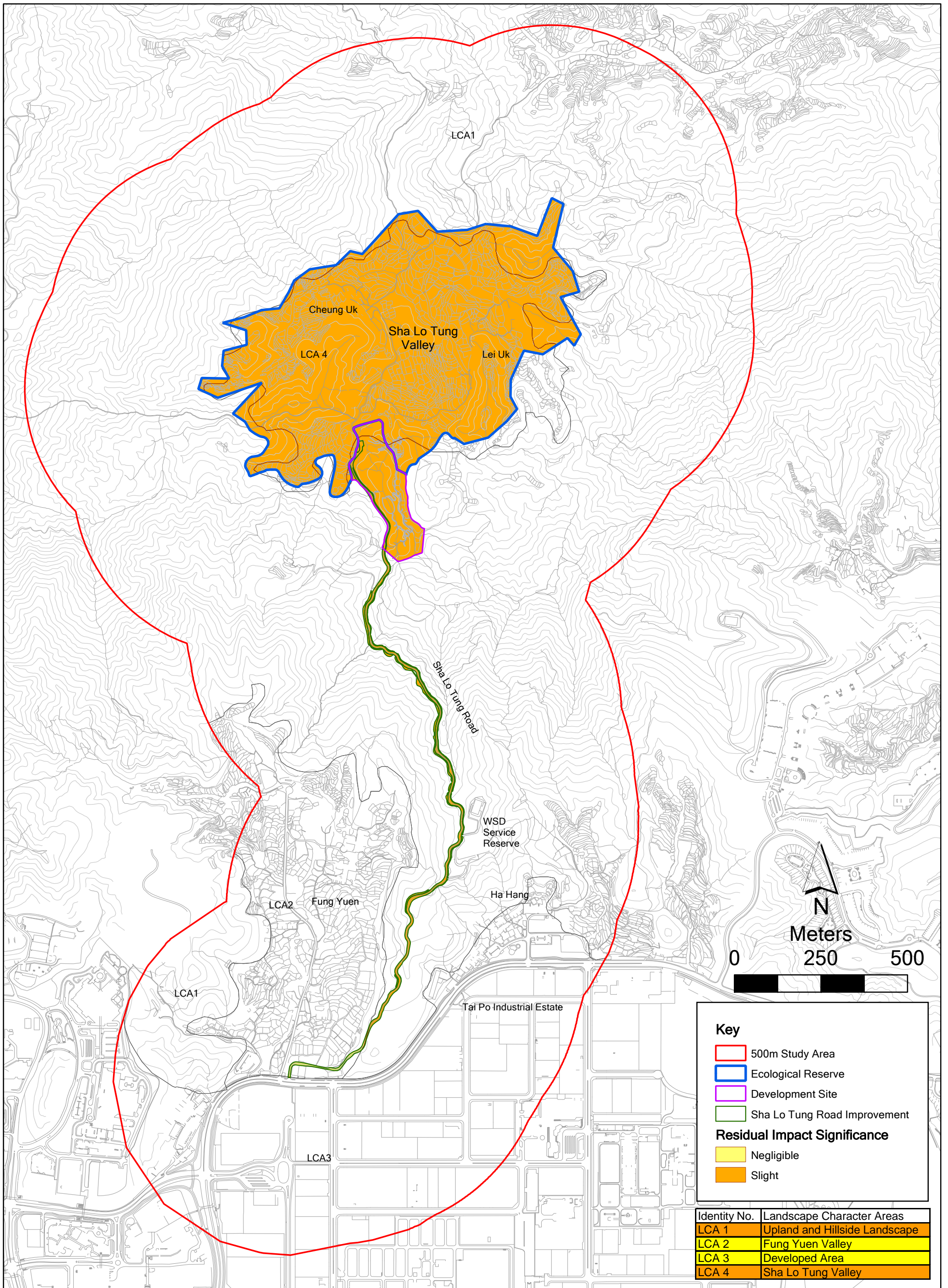
Residual Landscape Character Impacts at Day 1 of Operation

File: Oct2011\0099337\_Character\_Day1.mxd  
Date: 10/11/2011

**Environmental  
Resources  
Management**







**Key**

- 500m Study Area
- Ecological Reserve
- Development Site
- Sha Lo Tung Road Improvement

**Residual Impact Significance**

- Negligible
- Slight

Identity No.	Landscape Character Areas
LCA 1	Upland and Hillside Landscape
LCA 2	Fung Yuen Valley
LCA 3	Developed Area
LCA 4	Sha Lo Tung Valley

Figure 10.11

Residual Landscape Character Impacts at Year 10 of Operation

File: Oct2011\0099337\_Character\_Year10.mxd  
Date: 06/01/2012

**Environmental  
Resources  
Management**

