

Footpath from Sha Lo Tung Road to Cheung Uk in good condition



Broken village houses at Lei Uk











Proposed footbridge location



Existing footpath of 1-2m width to Lei Uk



**Key**

-  Development Site
-  Ecological Reserve
-  Sha Lo Tung Priority Site for Enhanced Conservation (under New Conservation Policy)
-  Sha Lo Tung SSSI
-  Fung Yuen SSSI
-  Conservation Area
-  Green Belt
-  Country Park
-  Stream

N

Metres

0 50 100 200

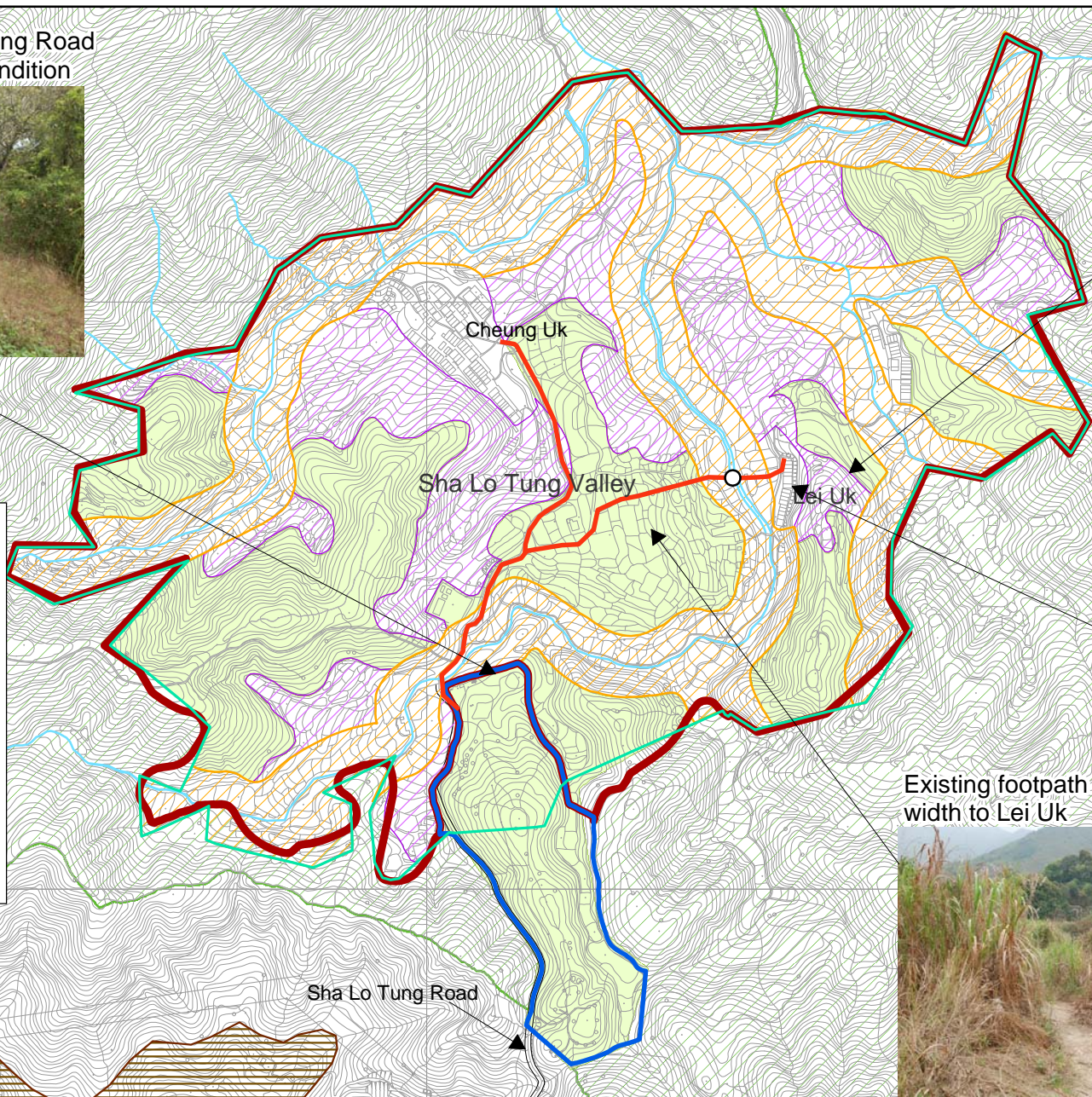


Figure 3.4

Location of Footpaths and Proposed Footbridge within Sha Lo Tung Ecological Reserve

File: Oct2011\0099337\_Footpaths and Footbridge.mxd  
Date: 16/11/2011