

KEY

- Representative Noise Sensitive Receiver
- ▨ Development Site
- ⌈⌋ SLT Road Investigation Boundary

NSR	Description	Approximate distance from nearest works boundary (m)
N1	Fung Yuen Lo Tsuen	160
N2	Fung Yuen	130
N3	Mak Uk	135
N4	Tin Sam	115
N5	Ha Hang Government Staff Quarters	65
V1	NSR at Village Zone	50
V2	NSR at Village Zone	30
CDA1	Proposed Development and Agricultural Use at Fung Yuen CDA (1) Zone	66

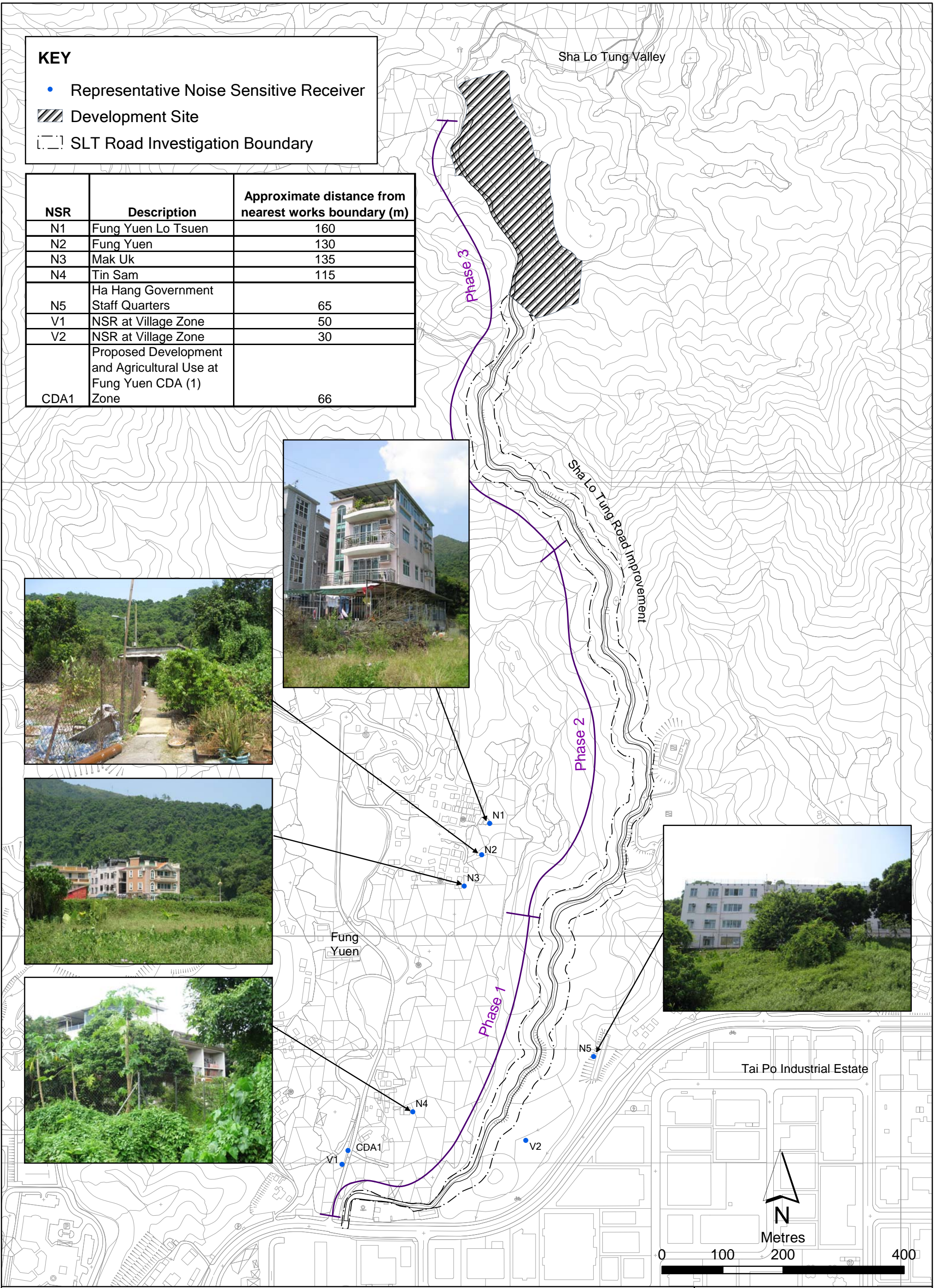


Figure 5.3

Location of Representative Noise Sensitive Receivers for the Proposed Development

File: Oct2011\0099337_
NSR_Columbarium2.mxd
Date: 09/11/2011

Environmental
Resources
Management



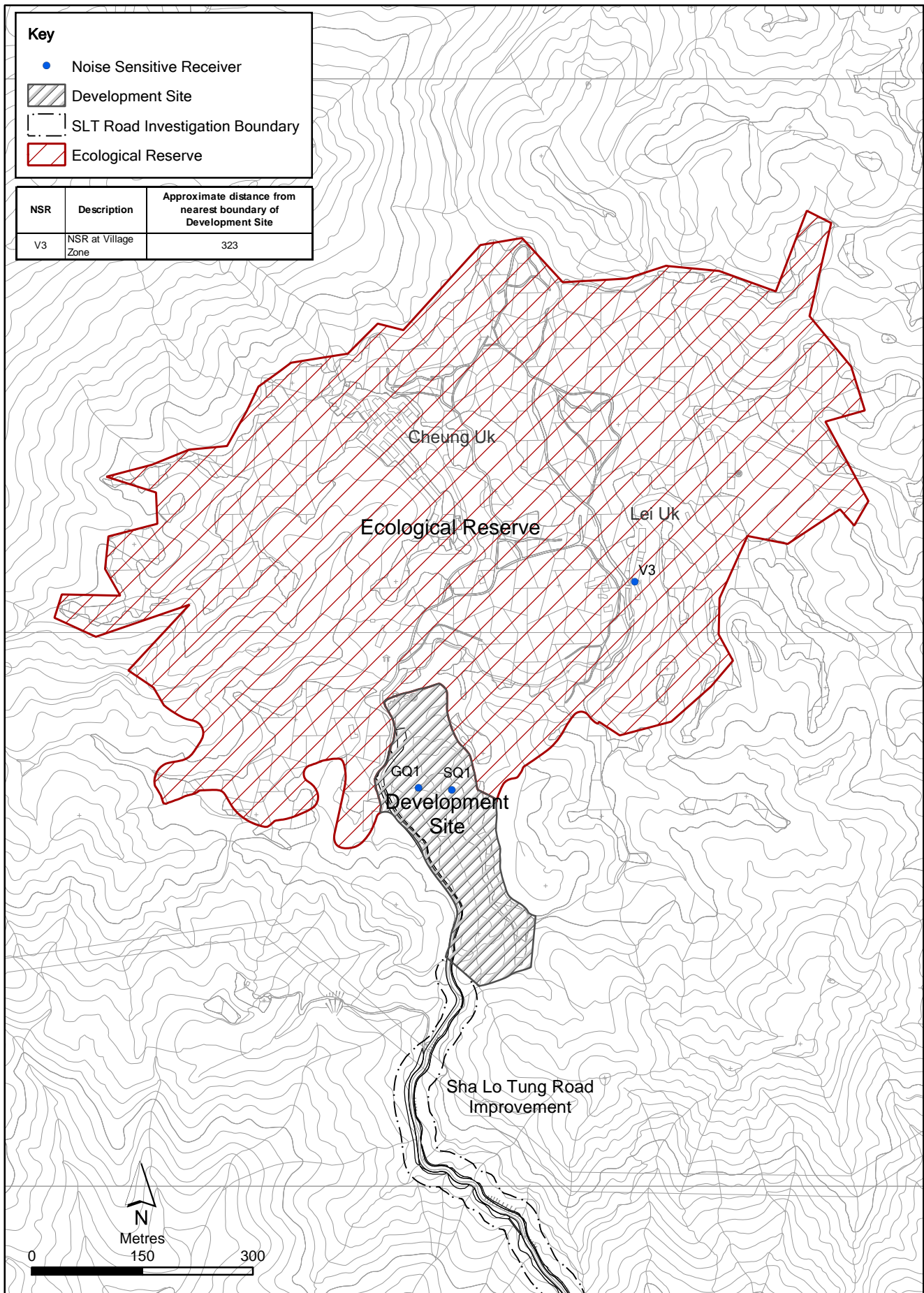


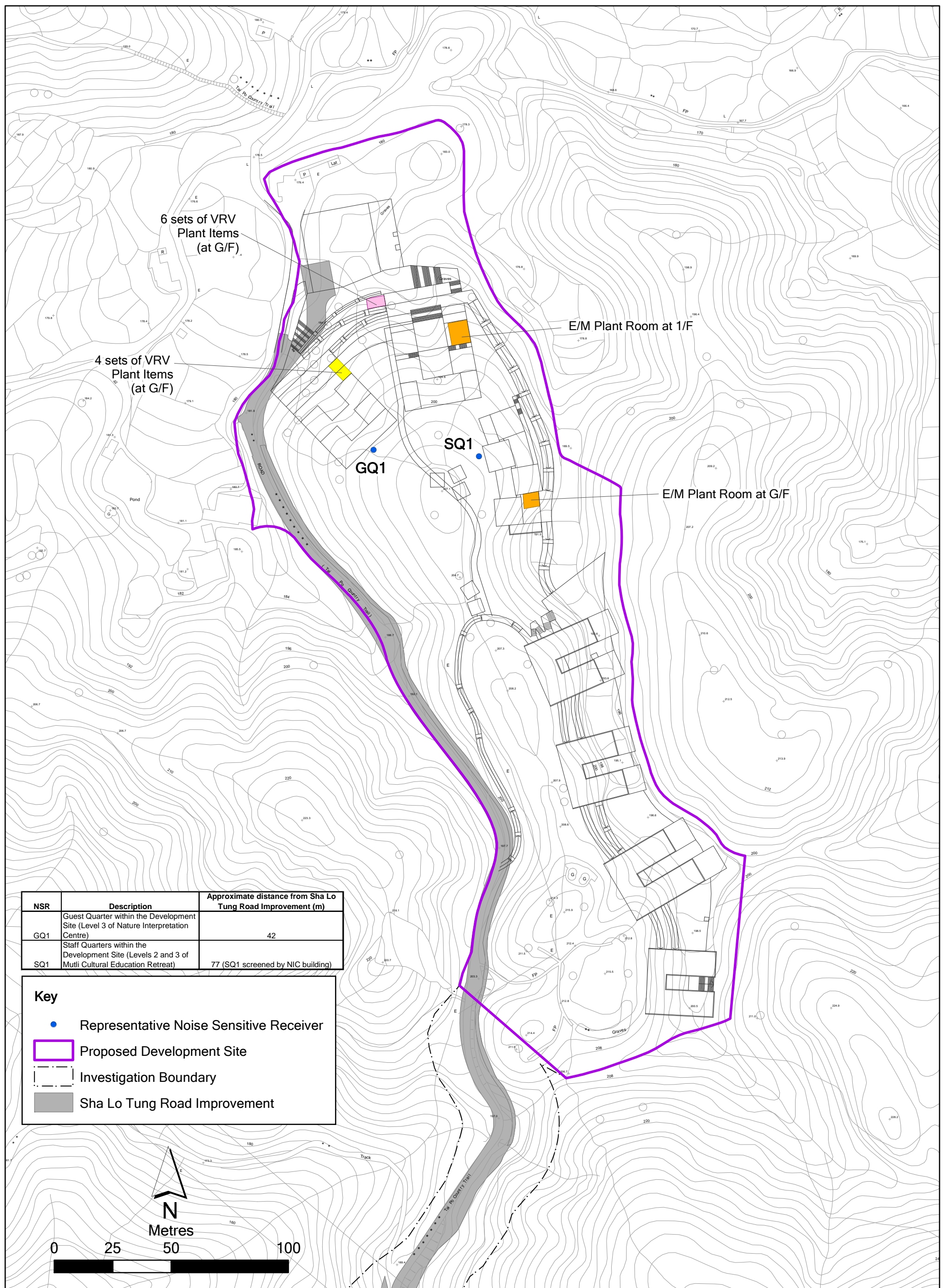
Figure 5.4

Location of Representative Noise Sensitive Receiver within the Ecological Reserve

File: Oct2011\0099337_
NSR_in_Ecological_Reserve.mxd
Date: 23/03/2012

Environmental
Resources
Management





NSR	Description	Approximate distance from Sha Lo Tung Road Improvement (m)
GQ1	Guest Quarter within the Development Site (Level 3 of Nature Interpretation Centre)	42
SQ1	Staff Quarters within the Development Site (Levels 2 and 3 of Multi Cultural Education Retreat)	77 (SQ1 screened by NIC building)

Key

- Representative Noise Sensitive Receiver
- Proposed Development Site
- Investigation Boundary
- Sha Lo Tung Road Improvement

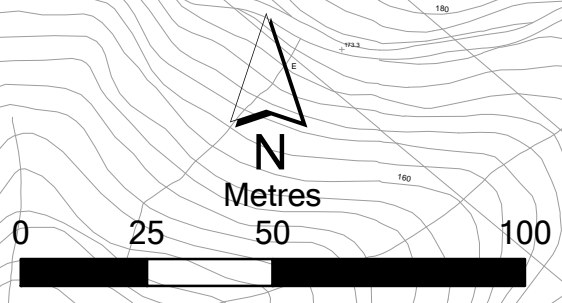


Figure 5.5

Location of Representative Noise Sensitive Receiver within the Development Site

File: Feb2012\0099337_NSR_in_Development_Site.mxd
Date: 15/02/2012

Environmental Resources Management

