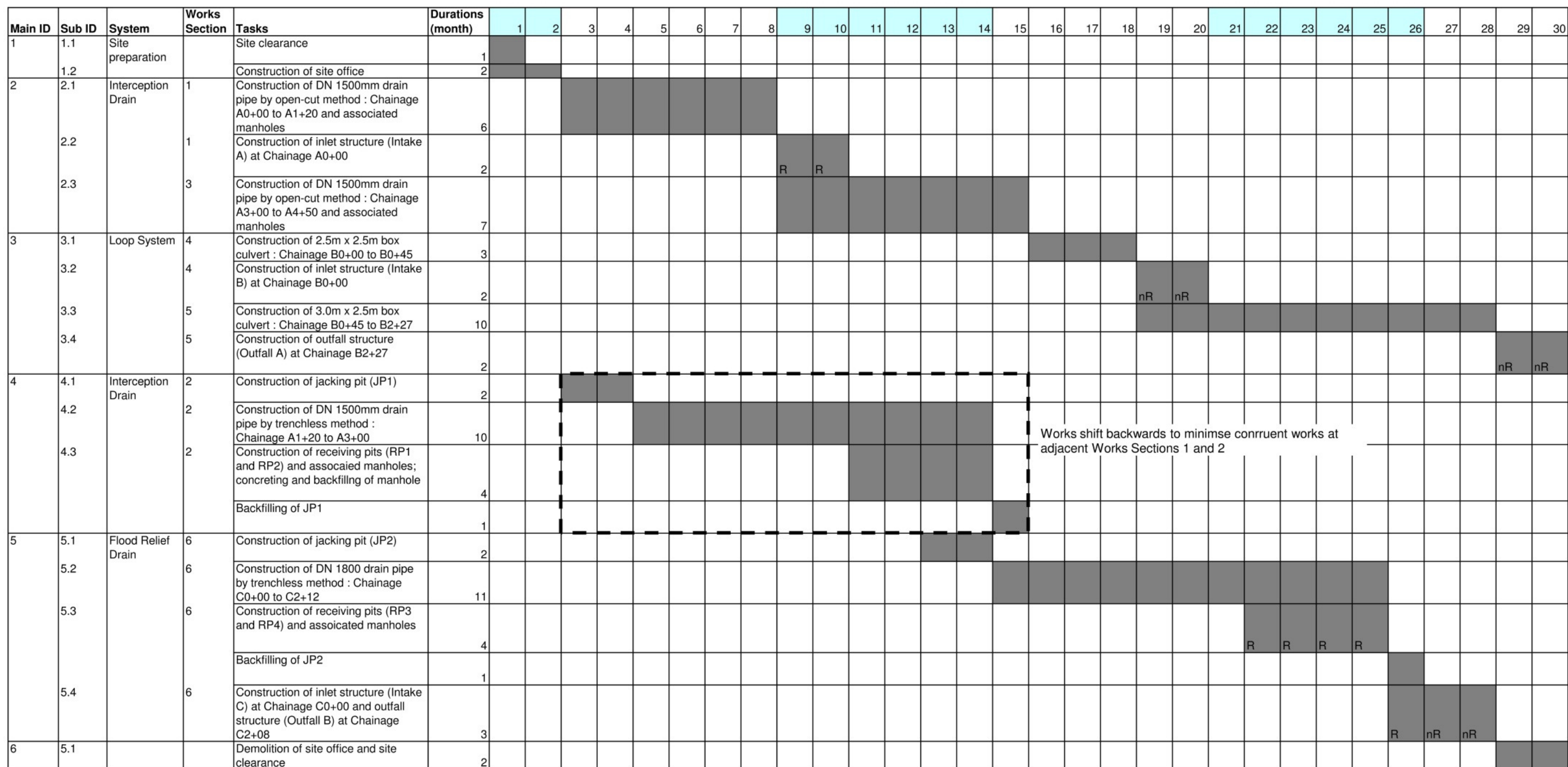


05-14 06-14 07-14 08-14 09-14 10-14 11-14 12-14 01-15 02-15 03-15 04-15 05-15 06-15 07-15 08-15 09-15 10-15 11-15 12-15 01-16 02-16 03-16 04-16 05-16 06-16 07-16 08-16 09-16 10-16



Overall Duration

30

R = constructing interfacing structure during rainy period
nR = constructing interfacing structure during non-rainy period.

Works shift backwards to minimise concurrent works at adjacent Works Sections 1 and 2



DRAINAGE SERVICES
DEPARTMENT
HONG KONG

ORIGINAL CONSTRUCTION PROGRAMME
(TENTATIVE)

Figure:

2.8a

Scale:

-

Rev:

-