

NOTES:
 1. THE 1-HR AVERAGE NO₂ AOD CRITERION IS 300 µg/m³.
 2. FOR EXCEEDANCE AREA, PLEASE REFER TO SECTION 4.7.7 FOR DETAILED DISCUSSION.

LEGEND:
 - - - - - SITE BOUNDARY
 - - - - - 500m STUDY AREA
 ● A1 AIR SENSITIVE RECEIVER

TRAFFIC NOISE MITIGATION MEASURES:
 ——— LANDSCAPED DECK
 ——— VERTICAL BARRIER (CONNECTED TO THE DECK)

REV.	DESCRIPTION	DATE

CEDD 土木工程拓展署
 Civil Engineering and Development Department

KAI TAK DEVELOPMENT

KAI TAK DEVELOPMENT - INFRASTRUCTURE AT FORMER RUNWAY AND REMAINING AREAS OF NORTH APRON AND IMPROVEMENT OF ADJACENT WATERWAYS - DESIGN AND CONSTRUCTION

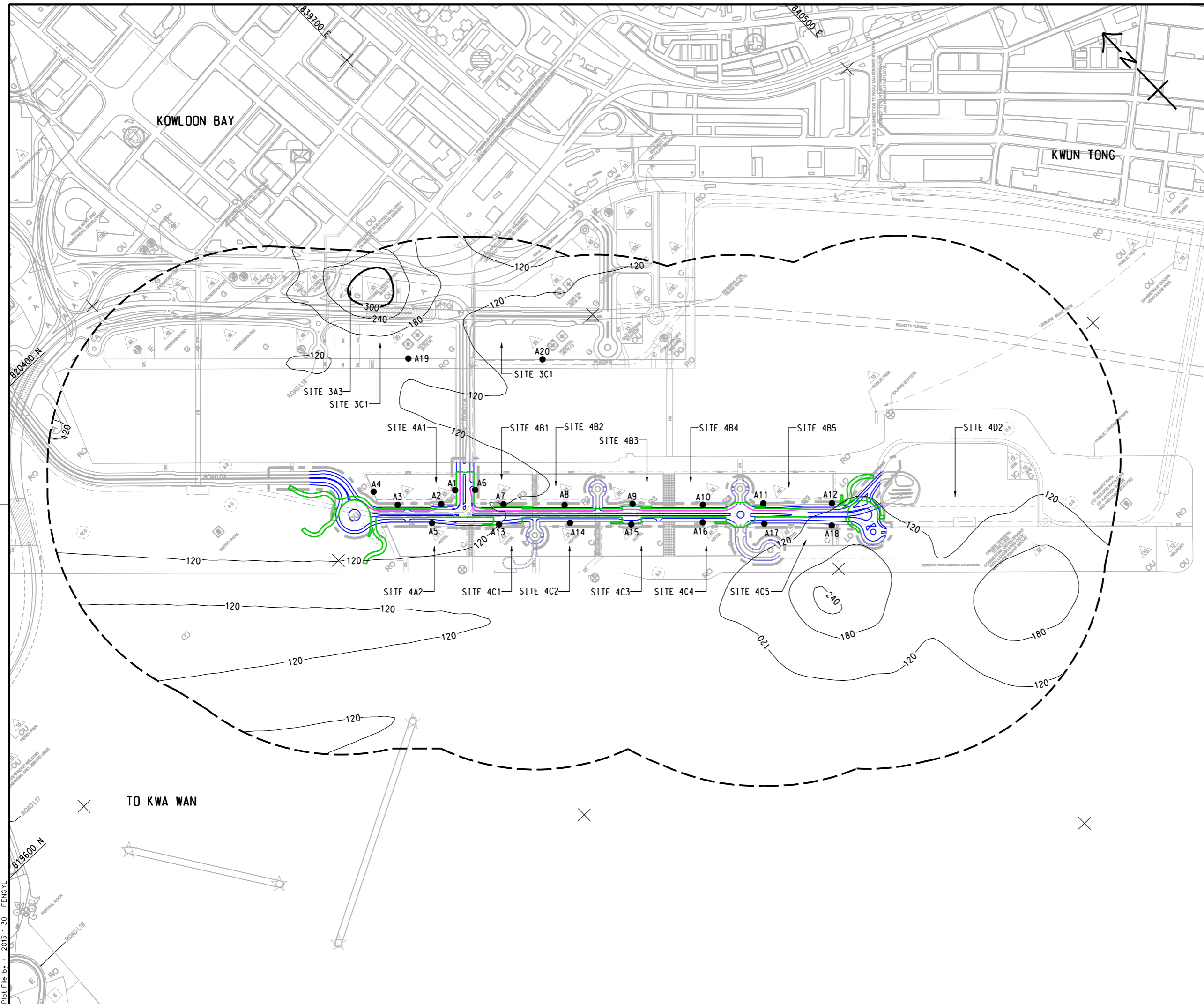
CONTOURS OF CUMULATIVE MAXIMUM 1-HR AVERAGE NO₂ CONCENTRATION IN µG/m³ (AT 1.5m ABOVE GROUND)

AECOM

DRG.NO. 60102100/FIGURE 4.3a
 圖紙編號

DESIGNED BY 設計	CONTRACT NO. 合約編號	P. O. APPROVED 負責人
DRAWN BY 繪圖	STATUS 階段	
SCALE: A1 1 : 4000 A3 1 : 8000	DIMENSIONS ARE IN 尺寸單位	
© COPYRIGHT RESERVED 版權所有		

Plot File by : 2013-1-30_FENGYL



NOTES:
 1. THE 1-HR AVERAGE NO₂ AOD CRITERION IS 300 µg/m³.
 2. FOR EXCEEDANCE AREA, PLEASE REFER TO SECTION 4.7.7 FOR DETAILED DISCUSSION.

LEGEND:
 - - - - - SITE BOUNDARY
 - - - - - 500m STUDY AREA
 ● A1 AIR SENSITIVE RECEIVER

TRAFFIC NOISE MITIGATION MEASURES:
 ——— LANDSCAPED DECK
 ——— VERTICAL BARRIER (CONNECTED TO THE DECK)

REV.	DESCRIPTION	DATE	BY	CHKD.

CEDD 土木工程拓展署
 Civil Engineering and Development Department

KAI TAK DEVELOPMENT

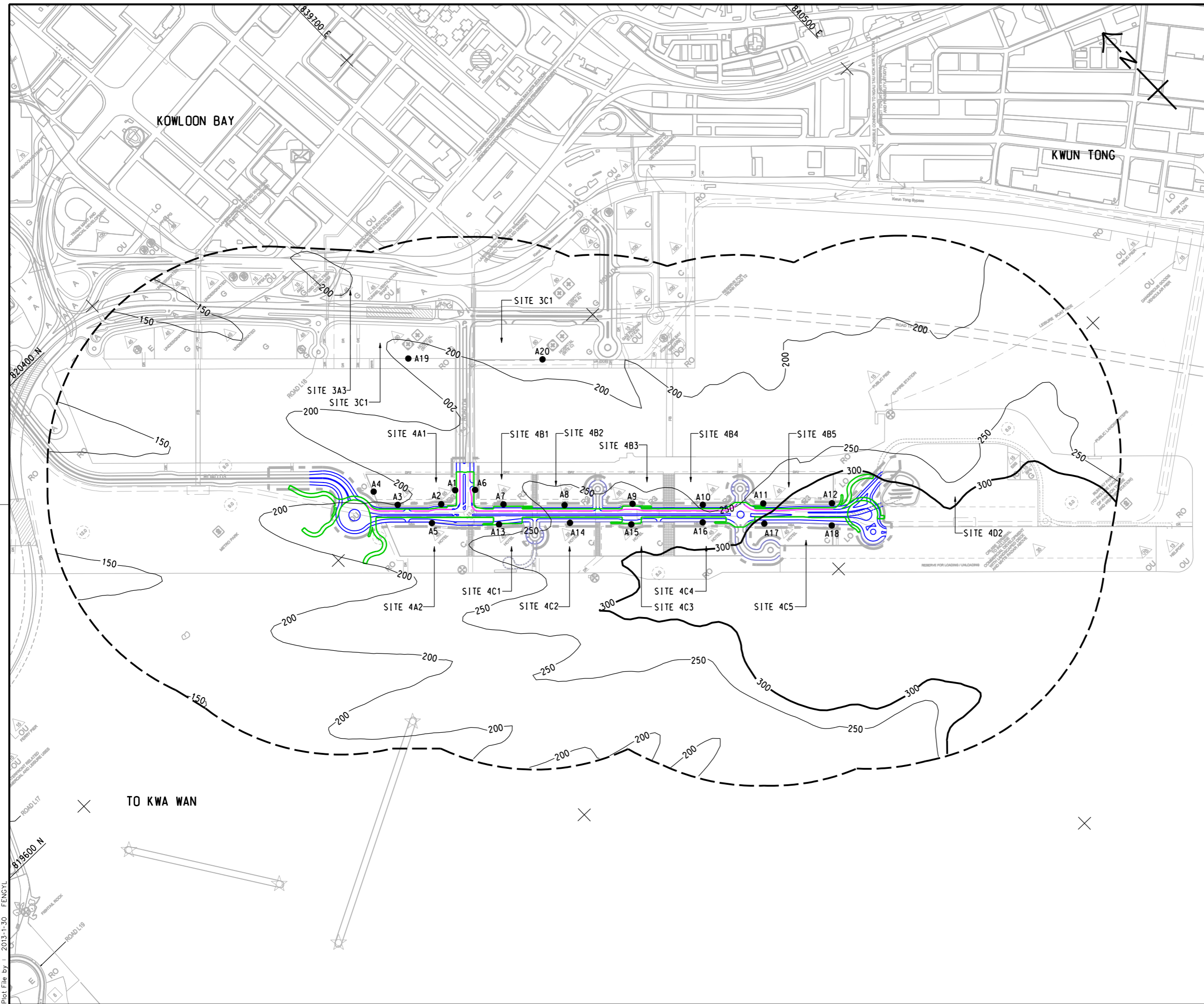
KAI TAK DEVELOPMENT - INFRASTRUCTURE AT FORMER RUNWAY AND REMAINING AREAS OF NORTH APRON AND IMPROVEMENT OF ADJACENT WATERWAYS - DESIGN AND CONSTRUCTION

CONTOURS OF CUMULATIVE MAXIMUM 1-HR AVERAGE NO₂ CONCENTRATION IN µG/m³ (AT 40m ABOVE GROUND)

AECOM

DRG.NO. 60102100/FIGURE 4.3b
 圖紙編號

DESIGNED BY 設計人	CONTRACT NO. 合約編號	P. OR APPROVED 校對人
DRAWN BY 繪圖人	STATUS 圖況	
SCALE: A1 1:4000 A3 1:8000		
DIMENSIONS ARE IN 尺寸單位	© COPYRIGHT RESERVED 版權所有	



- NOTES:**
1. THE 1-HR AVERAGE NO_2 AOD CRITERION IS $300 \mu g/m^3$.
 2. FOR EXCEEDANCE AREA, PLEASE REFER TO SECTION 4.7.7 FOR DETAILED DISCUSSION.
- LEGEND:**
- SITE BOUNDARY
 - - - 500m STUDY AREA
 - A1 AIR SENSITIVE RECEIVER
- TRAFFIC NOISE MITIGATION MEASURES:**
- LANDSCAPED DECK
 - VERTICAL BARRIER (CONNECTED TO THE DECK)

REV.	DESCRIPTION	DATE

CEDD 土木工程拓展署
Civil Engineering and Development Department

KAI TAK DEVELOPMENT

KAI TAK DEVELOPMENT - INFRASTRUCTURE AT FORMER RUNWAY AND REMAINING AREAS OF NORTH APRON AND IMPROVEMENT OF ADJACENT WATERWAYS - DESIGN AND CONSTRUCTION

CONTOURS OF CUMULATIVE MAXIMUM 1-HR AVERAGE NO_2 CONCENTRATION IN $\mu g/m^3$ (AT 95m ABOVE GROUND)

AECOM

DRG.NO. 圖紙編號 **60102100/FIGURE 4.3c**

DESIGNED BY 設計	CONTRACT NO. 合約編號	P. OR APPROVED 核准人
STATUS 圖況	STATUS 圖況	
SCALE 比例尺	SCALE 比例尺	
DIMENSIONS ARE IN 尺寸單位	DIMENSIONS ARE IN 尺寸單位	

© COPYRIGHT RESERVED
版權所有