

Appendix 5.11

Location of Existing Extent of
LNRS (West Portion and East
Portion)

Arup-Mott MacDonald Joint Venture

Your ref
Our ref 217722/6.8/EC/DL/HL/CC/0052

BY HAND

Highways Department
Urban Region
District and Maintenance Section(Kowloon Office)
Structures Maintenance Section (Urban)
Maintenance Section
13th Floor, Nan Fung Commercial Centre
19 Lam Lok Street, Kowloon Bay
Kowloon

Level 5 Festival Walk
80 Tat Chee Avenue
Kowloon Tong
Kowloon
Hong Kong
t +852 2528 3031
d +852 2268 3548
f +852 2268 3954
eric.chan@arup.com
www.arup.com

Attention: Mr. MOK Hei Tat

23 August 2011

Dear Sir

**Agreement No. CE 43/2010 (HY)
Central Kowloon Route - Design and Construction
Request for information about low noise surfacing**

We (AMMJV - Joint Venture of Ove Arup & Partners Hong Kong Ltd (Arup) and Mott MacDonald Hong Kong Ltd (MM)) have been recently appointed by HyD for the Consultancy "Agreement No. CE 43/2010 (HY) Central Kowloon Route - Design & Construction".

As part of the study, we need to carry out an Environmental Impact Assessment. We would be grateful if you could confirm us the following information for our road traffic noise assessment.

Low noise surfacing material

- Extent of low noise surfacing materials for the roads as highlighted in light green within our study area in Figure 1 (Western) and Figure 2 (Eastern).
- Any future plan for retrofitting the low noise surfacing materials within the study area. Please provide drawings showing the extent and implementation programme.

We look forward to receiving your reply. Please contact our Ms Lindy Tam at 3447 6087 or the undersigned for details if required. Thank you for your help in advance.

Yours faithfully
For and on behalf of
Arup-Mott MacDonald Joint Venture



Eric Chan
Project Manager

Encl

cc. HyD/MW – Mr. Michael Leung, SE1/CKR (w/e)



HIGHWAYS DEPARTMENT
URBAN REGION (KOWLOON)
 13TH FLOOR, NAN FUNG COMMERCIAL CENTRE
 19 LAM LOK STREET, KOWLOON BAY, KOWLOON
 Web site : <http://www.hyd.gov.hk>

By Fax and Post
 2268 3954

路政署
 市區(九龍)
 九龍灣臨樂街十九號
 南豐商業中心十三樓
 網址 : <http://www.hyd.gov.hk>

[KH7UW]

本署檔號 Our Ref.: (KHG3S)KH8/4/127(D&C)(MYT)
 來函檔號 Your Ref.: 217722/6.8/EC/DL/HL/CC/0052
 電話 Tel. No.: 2707 7418
 圖文傳真 Fax No.: 2758 3394

11 November 2011

Arup-Mott MacDonald Joint Venture
 Level 5 Festival Walk
 80 Tat Chee Avenue
 Kowloon Tong, Kowloon, Hong Kong
 (Attn: Mr. Eric CHAN)


Dear Sirs,

Agreement No. CE 43/2010(HY)
Central Kowloon Route - Design and Construction
Request for Information about Low Noise Surfacing

I refer to your letter dated 23.08.2011 requesting information about low noise surfacing material for your road traffic noise assessment.

2. Please find attached two sketches showing the locations of existing low noise surfacing to the best of our knowledge. The sketches are for information only and you are advised to verify them to suit your purpose. We note there appears to be some discrepancies between our record and your figures. Please advise where you obtain the information to produce the figures. You may inspect the road record in our Drawing Office. Please contact Mr. H C LEUNG at 2707 7320 for inspection arrangement
3. Expressways within the 2 study areas are under NT Regional Office's jurisdiction. Please approach NT Regional office for information.
4. Please address the future correspondence related to Central Kowloon Route under Agreement No. CE43/2010(HY) to Mr. PANG Yeung-chau for coordinated reply of this Regional Office.

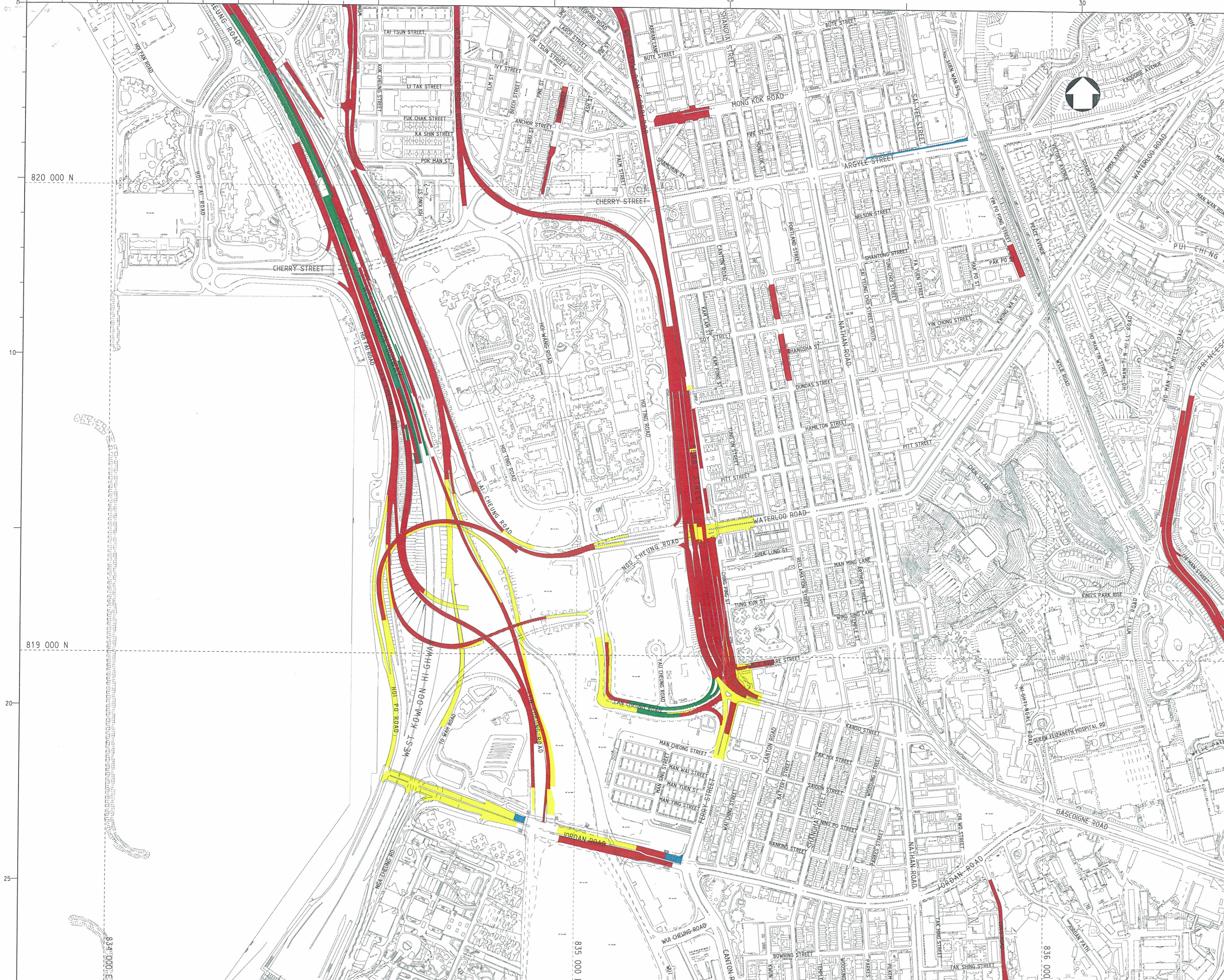
ARUP		Job No.	217722
Reply Ref.:		File No.	
Action Required:		Date	6.8
#0296			
Received 15 NOV 2011			
Ints.		PM: Mott Environ	
Action			
Encl. (2 pages)			
Copy			

Yours faithfully,

 (Ms. Gladys KWONG)
 for Chief Highway Engineer/Kowloon
 Highways Department

c.c. (w/e) - by FAX only
 CE2/MW, MWPMO, HyD (Attn: Mr. Michael LEUNG) Fax: 2714 5198

Internal DE/KC, PTO(C)/K, STO(C)/K3





NOTES:
1. ALL GRIDS REFER TO HONG KONG 1980 GRID.

- LEGEND:
- █ FRICTION COURSE (MODIFIED)
 - █ FRICTION COURSE (ORDINARY)
 - █ CARRIAGEWAY WITH N.R.H.S. USING POROUS FRICTION COURSE
 - █ CARRIAGEWAY WITH N.R.H.S. USING SMA SURFACING

FOR INFORMATION ONLY
as at 09-NOV-2011

project title

title
PAVEMENT OF NOISE REDUCING SURFACING IN KOWLOON
(SHEET 1 OF 2)


drawing no.
HKHD31120-GL0012

map reference 11NW

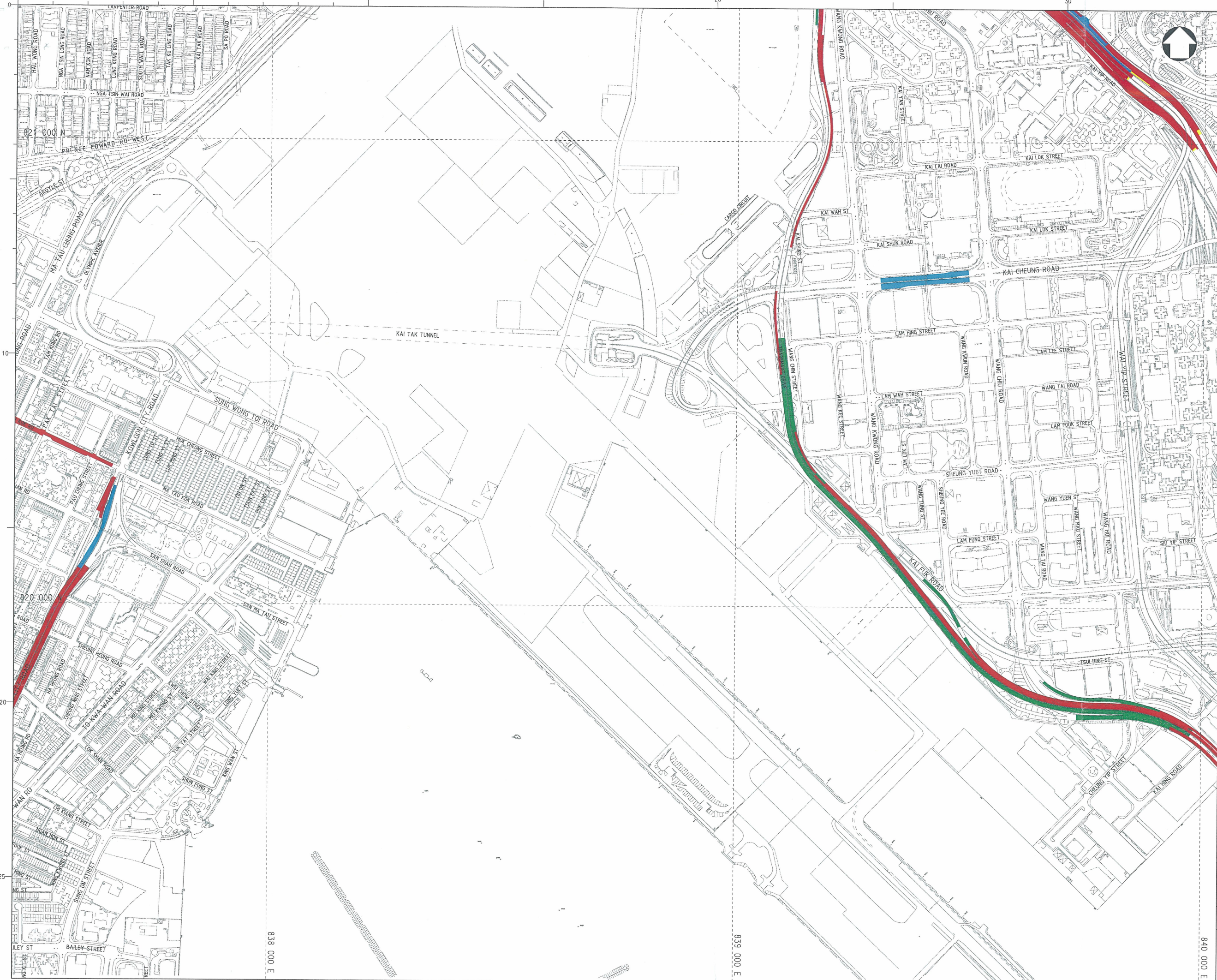
scale 1 : 7500

office
URBAN REGION (KOWLOON)

COPYRIGHT RESERVED



HIGHWAYS
DEPARTMENT
HONG KONG



NOTES:
1. ALL GRIDS REFER TO HONG KONG 1980 GRID.

- LEGEND:
- FRICTION COURSE (MODIFIED)
 - FRICTION COURSE (ORDINARY)
 - CARRIAGEWAY WITH N.R.H.S. USING POROUS FRICTION COURSE
 - CARRIAGEWAY WITH N.R.H.S. USING SMA SURFACING

FOR INFORMATION ONLY
as at 09-NOV-2011

project title

title
PAVEMENT OF NOISE REDUCING SURFACING IN KOWLOON
(SHEET 2 OF 2)

drawing no.
HKHD31120-GL0013

map reference 11NEA & 11NEC

scale 1 : 7500

office
URBAN REGION (KOWLOON)

COPYRIGHT RESERVED



HIGHWAYS DEPARTMENT
HONG KONG