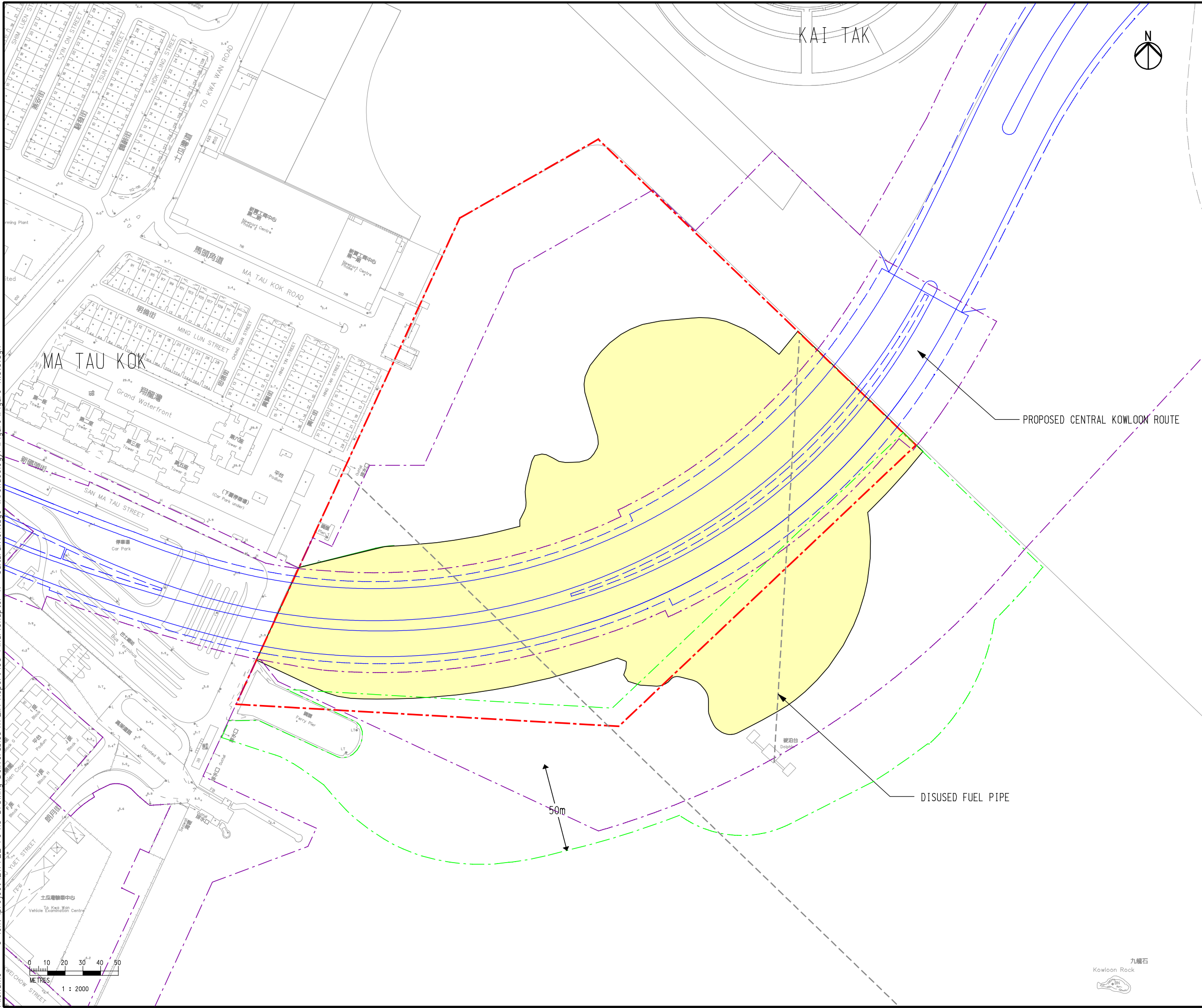
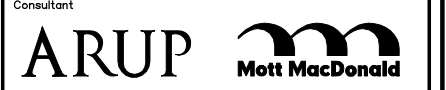


Printed by : 1/2/2013  
 Filename : G:\env\project\217722-70\13 Drawing Deliverables\11 EIA Report\05 Final\Chapter 11 - Cultural Heritage (Archaeology)\Figure 11.5.5.dgn



- LEGEND
- PROPOSED ADDITIONAL GEOPHYSICAL SURVEY AREA
  - POSSIBLE DREDGING FOR UNDERWATER TUNNEL CONSTRUCTION AND NAVIGATION DURING CONSTRUCTION STAGE
  - BOUNDARY OF GEOPHYSICAL SURVEY CONDUCTED IN 2008 (UNDER CE58/2006(HY))
  - CKR ALIGNMENT
  - WORKS LIMIT

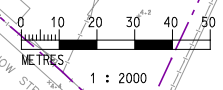
D	FOURTH ISSUE	GL	12/12
C	THIRD ISSUE	GL	10/12
B	SECOND ISSUE	GL	06/12
A	FIRST ISSUE	GL	12/11
Rev	Description	By	Date



Project title  
**Agreement No. CE 43/2010 (HY)**  
**Central Kowloon Route - Design and Construction**

Drawing title  
**Study Area for 2008 MAI Plus Additional 2012 Geophysical Survey Area**

Drawing no. <b>Figure 11.5.5</b>		Rev. <b>D</b>	
Drawn GL	Date 12/12	Checked TC	Approved ST
Scale 1:2000 ON A3		Status <b>PRELIMINARY</b>	



COPYRIGHT RESERVED