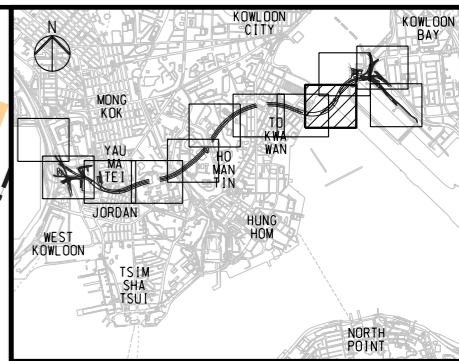
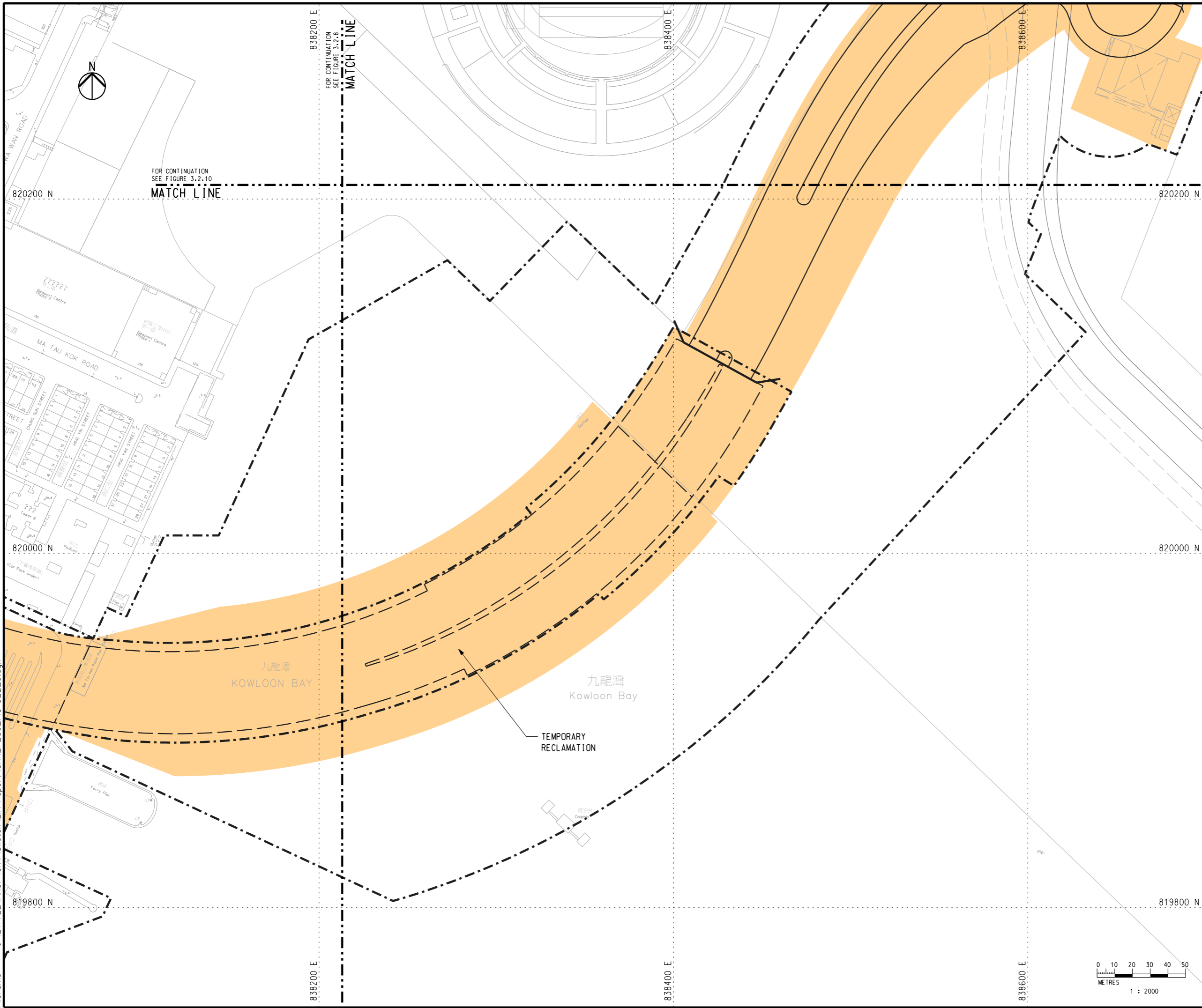


Printed by : 02/01/2013
 Filename : J:\217722\ARUP\Civil\Sketch\EIA Report\CKR_F_06_FIG-3_2_9.dgn



KEY PLAN

- LEGEND**
- WORKS LIMIT (LAND TEMPORARY OCCUPIED THROUGHOUT THE MAIN CONTRACT PERIOD FROM JAN2015)
 - == PROPOSED CKR ALIGNMENT
 - TEMPORARY AT-GRADE WORKS AREA

C	THIRD ISSUE	LT	12/12
B	SECOND ISSUE	LT	06/12
A	FIRST ISSUE	LT	02/12
Rev	Description	By	Date

Consultant
ARUP **Mott MacDonald**
 Joint Venture

Project title
 Agreement No. CE 43/2010 (HY)
 Central Kowloon Route -
 Design and Construction

Drawing title
**TEMPORARY AT-GRADE
 WORKS AREA
 (SHEET 9 OF 12)**

Drawing no. FIGURE 3.2.9		Rev. C	
Drawn RY	Date 02/12	Checked HL	Approved EC
Scale 1:2000 @ A3		Status PRELIMINARY	

COPYRIGHT RESERVED

路政署
HIGHWAYS DEPARTMENT
 主要工程管理處
 MAJOR WORKS PROJECT MANAGEMENT OFFICE

