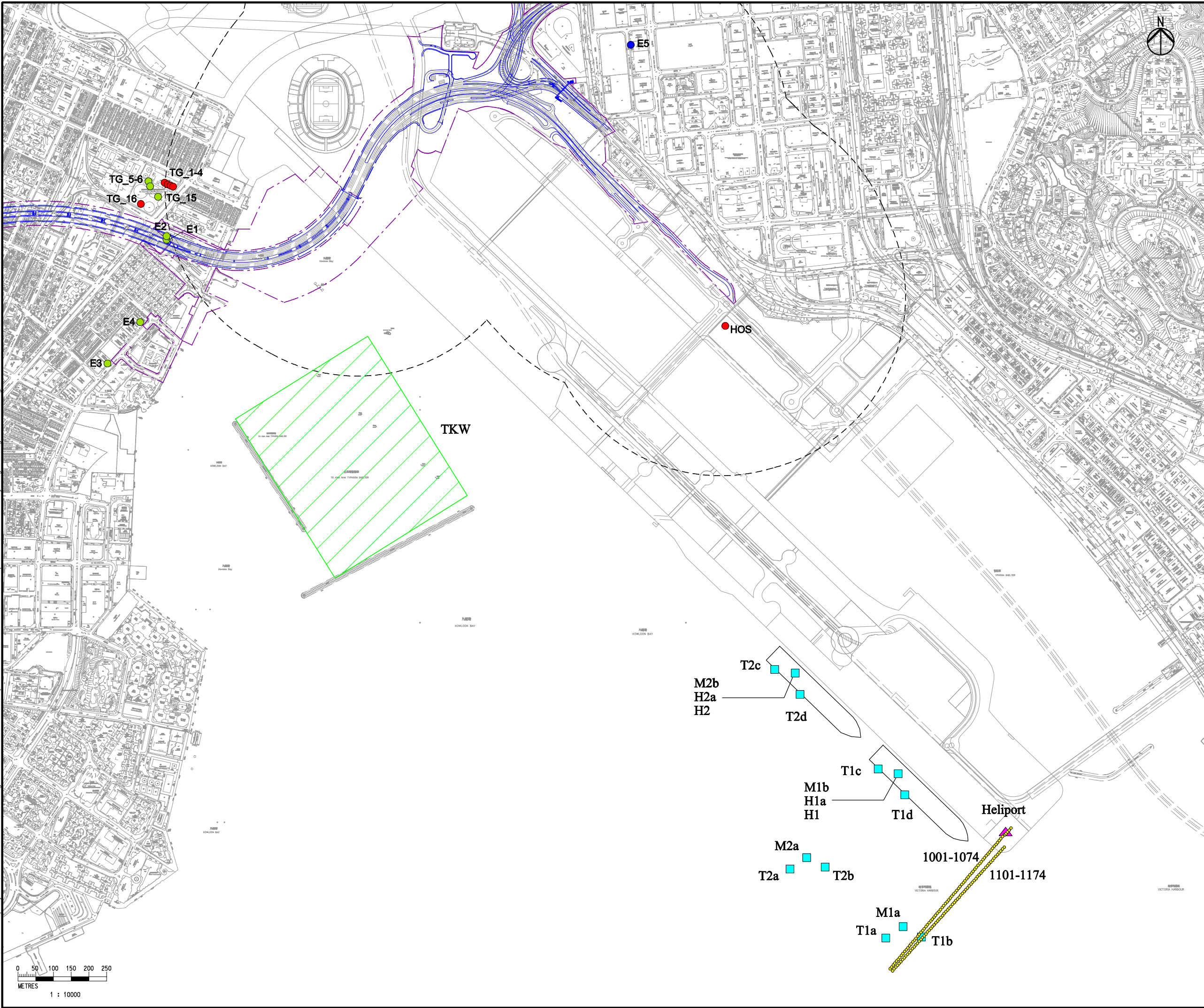


Printed by : 1/26/2013
Filename : G:\env\project\217722-70\13 Drawing Deliverables\11 EIA Report\06 Final Submission\Chapter 4 - Air Quality\Figure\Figure 4.7.6.dgn



Legend

- CKR Alignment
- CKR Works Limit
- 500m Study Boundary
- Chimney (in-use)
- Chimney (emergency)
- Chimney (not-use)
- Typhoon Shelter
- Heliport
- Helicopter Emission
- Marine Emission

F	SIXTH ISSUE	GL	01/13
E	FIFTH ISSUE	GL	12/12
C	THIRD ISSUE	GL	07/12
B	SECOND ISSUE	GL	01/12
A	FIRST ISSUE	GL	12/11
Rev	Description	By	Date

Consultant

ARUP **Mott MacDonald**

Project title

Agreement No. CE 43/2010 (HY)

Central Kowloon Route - Design and Construction

Drawing title

Locations of Industrial, Marine and Helicopter Emissions Sources (East Portion)

Drawing no.			Rev.	
Figure 4.7.6			F	
Drawn	Date	Checked	Approved	
GL	01/13	FC	ST	
Scale		Status		
1:10000 ON A3		PRELIMINARY		

COPYRIGHT RESERVED

路政署
HIGHWAYS DEPARTMENT
主要工程管理處
MAJOR WORKS PROJECT MANAGEMENT OFFICE