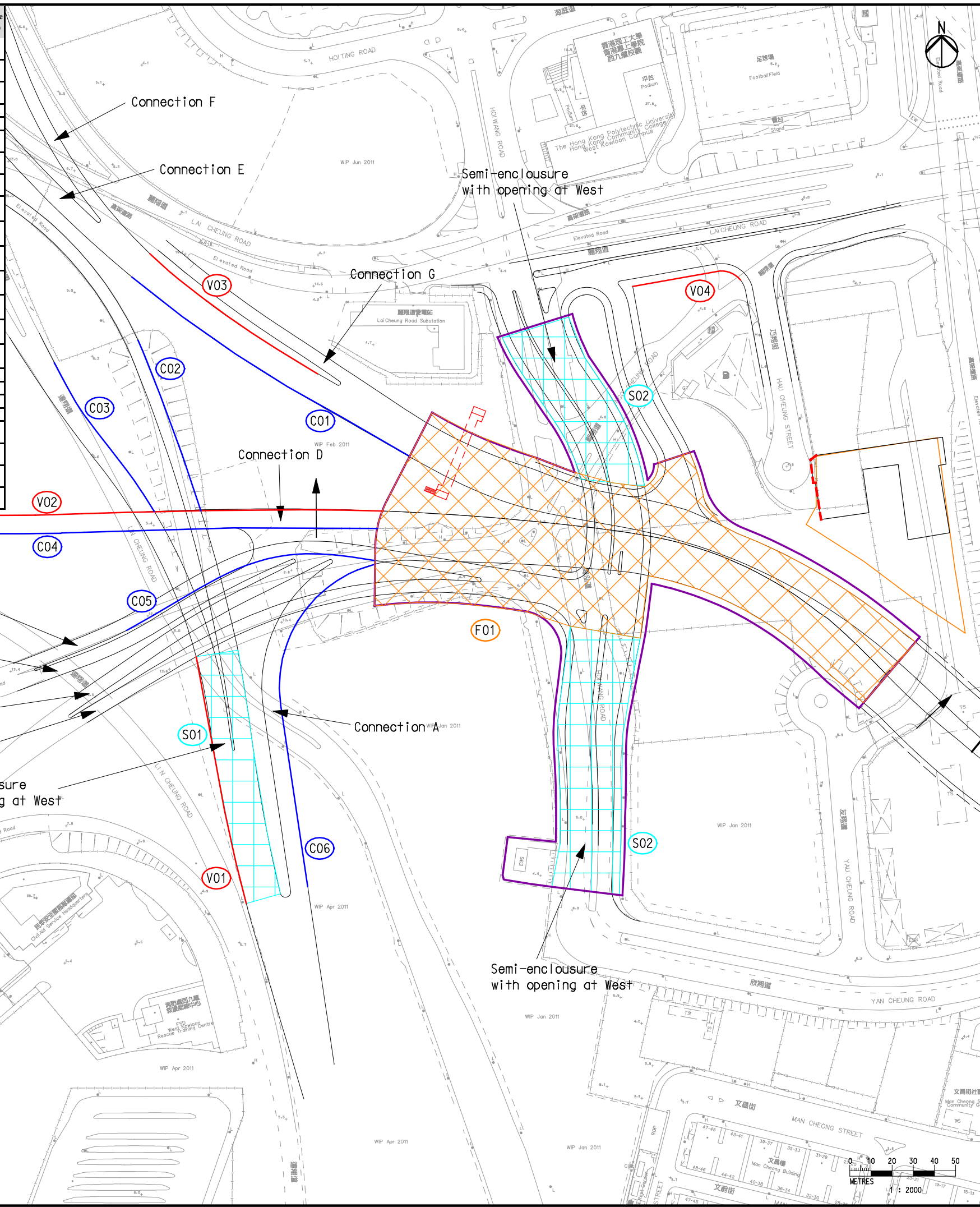


Printed by : 3/2/2013
 Filename : G:\env\project\217722-70\13 Drawing Deliverables\18 EM&A Manual\06 Final Submission\Ch. 6\Figure 6.4.dgn

Noise Mitigation Measures ID	Location	Type of Noise Mitigation Measures [1]	Height above road level (m)	Approximate mPD	Approximate Length (m)
F01	West portal of CKR	Full enclosure including landscape deck	9	5.9 – 22.5	250
F02	Gascoigne Road Flyover (Ferry Street section)	Full enclosure	10	22	110
F03	Gascoigne Road Flyover (Kansu Street section) (NB+SB)	Full enclosure	7	19.5 – 21	200
S01	Lin Cheung Road	Semi-enclosure with opening at west	10	11.5 – 12.6	120
S02	Re-aligned Hoi Wang Road	Semi-enclosure with opening at west	10	10.5 – 17.7	270
S03	Gascoigne Road Flyover (Ferry Street section) (SB)	Semi-enclosure with opening at south	7	19.8 – 20.1	85
S04	Gascoigne Road Flyover (Kansu Street section) (NB+SB)	Semi-enclosure with opening at south	7	18.1 – 19.5	45
S05	Gascoigne Road Flyover (Kansu Street section) (NB+SB)	Semi-enclosure with opening at north	7	21	60
C01	Connection E	5m high with 3m cantilever at 45° cantilevered barrier	7.1	12.8 – 16.1	155
C02	Lin Cheung Road	5m high with 3m cantilever at 45° cantilevered barrier	7.1	12.6 – 17.1	85
C03	Lin Cheung Road	5m high with 3m cantilever at 45° cantilevered barrier	7.1	11.8 – 12.7	85
C04	Connection D	5m high with 3m cantilever at 45° cantilevered barrier	7.1	14.1 – 20.6	190
C05	Connection C2	5m high with 3m cantilever at 45° cantilevered barrier	7.1	22.8 – 24.9	120
C06	Connection A	5m high with 3m cantilever at 45° cantilevered barrier	7.1	12.9 – 13.9	170
C07	Ferry Street Road (At-grade)	5m high with 1m cantilever at 45° cantilevered barrier	5.7	9.5 – 9.6	160
V01	Lin Cheung Road	4m vertical barrier	4	7.9 – 9.7	120
V02	Connection D	3.8m vertical barrier	3.8	10.8 – 17.3	190
V03	Connection E	5.8m vertical barrier	5.8	11.7 – 14.6	100
V04	Widening of Lai Cheung Road	4m vertical barrier	4	8.5 – 8.6	50
V05	Gascoigne Road Flyover (Ferry Street section) (SB)	3.3m vertical barrier	3.3	15.3 – 16.3	110
V06	Gascoigne Road Flyover (Ferry Street section) (central divider)	3.8m vertical barrier	3.8	15 – 15.8	100
V07	Gascoigne Road Flyover (Kansu Street section) (SB)	4.3m vertical barrier	4.3	19.3	60
V08	Gascoigne Road Flyover (Kansu Street section) (central divider)	2.8m vertical barrier	2.8	17.8	60



- Legend
- CKR Alignment
 - Planned G/IC Zone
 - Landscape Deck
 - Full-enclosure
 - Semi-enclosure
 - Vertical Barrier
 - Cantilevered Barrier
 - Avoid any sensitive facade with openable window facing Central Kowloon Route

D	FOURTH ISSUE	GL	12/12
C	THIRD ISSUE	GL	09/12
B	SECOND ISSUE	GL	06/12
A	FIRST ISSUE	GL	12/11
Rev	Description	By	Date



Project title
Agreement No. CE 43/2010 (HY)
Central Kowloon Route - Design and Construction

Drawing title
Location of Proposed Noise Mitigation Measures for Road Traffic Noise (West Portion) (Sheet 4 of 5)

Drawing no. Figure 6.4		Rev. D	
Drawn GL	Date 12/12	Checked FC	Approved ST
Scale 1:2000 ON A3	Status PRELIMINARY		

