



將軍澳
JUNK BAY
(TUNG KWAN O)

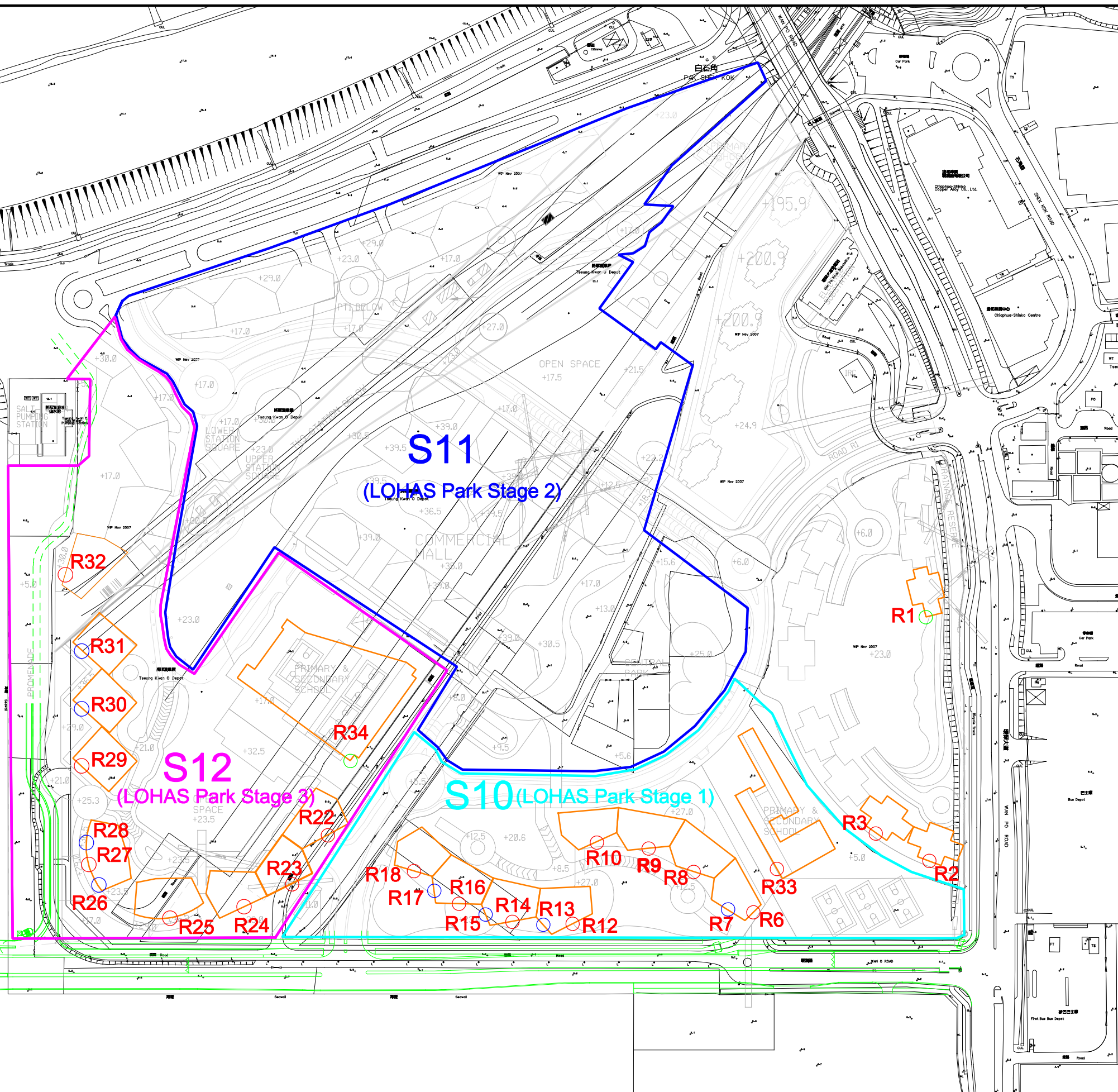
Remark:

1. When assessing construction noise impacts to R1 & R2 as a conservative scenario for cumulative impact assessment, buildings in S10, S11 & S12 are assumed to be construction.
2. When assessing construction noise impacts to R6-R18 & R33 as a conservative scenario for cumulative impact assessment, buildings in S11 & S12 are assumed to be construction.
3. When assessing construction noise impacts to R22-R32 & R34 as a conservative scenario for cumulative impact assessment, buildings in S10 & S11 are assumed to be construction.

Legend:

- Construction Noise Assessment Point
- Traffic Noise Assessment Point
- Construction and Traffic Noise Assessment Point

0 100m



土木工程拓展署
Civil Engineering and
Development Department

ARUP
Ove Arup & Partners
Hong Kong Limited

Job Title

**Agreement No. CE 43/2008(HY)
Cross Bay Link, Tseung Kwan O – Investigation**

Drawing Title

**Locations of NSRs
For Noise Assessment**

Rev.	Description	Date
C	THIRD ISSUE	02/13
B	SECOND ISSUE	12/12
A	FIRST ISSUE	04/09

Drawn	GL	Date	02/13
Checked	JP	Approved	ST
Scale	1:3000 on A3		

Drawing No.	209506/EIA/NS/001	
Status	FINAL	Rev. C