

Indicator Points

- Water Quality Sensitive Receivers
- ▲ EPD's Routine Monitoring Stations

WSR ID	Description
SWI1	WSD's Salt Water Intakes at Tseung Kwan O
SWI2	WSD's Salt Water Intakes at Yau Tong
SWI3	WSD's Salt Water Intakes at Tai Wan
SWI4	WSD's Salt Water Intakes at Cha Kwo Lang
SWI5	WSD's Salt Water Intakes at North Point
SWI6	WSD's Salt Water Intakes at Quarry Bay
SWI7	WSD's Salt Water Intakes at Sai Wan Ho
SWI8	WSD's Salt Water Intakes at Heng Fa Chuen
SWI9	WSD's Salt Water Intakes at Siu Sai Wan
SWI10	Salt Water Intakes at Cape D'Aguiar for Swire Institute of Marine Science, The University of Hong Kong
CWI1	Cooling Water Intakes for Dairy Farm Ice Plant
CWI2	Cooling Water Intakes for Pamela Youde Nethersole Eastern Hospital
CWI3	Future Kai Tak Cooling Water Intakes
CC1	Coral Sites at Chiu Keng Wan
CC2	Coral Sites at Junk Bay
CC3	Coral Sites at Junk Island
CC4	Coral Sites at Fat Tong Chau West
CC5	Coral Sites at Tso Tui Wan North
CC6	Coral Sites at Joss House Bay
CC7	Coral Sites at Tung Lung Chau West
CC8	Coral Sites at Tung Lung Chau East
CC9	Coral Sites at Shek Mei Tau
CC10	Coral Sites at So Shi Tau
CC11	Coral Sites at Tai Wang Tau
CC12	Coral Sites at Po Keng Teng
CC13	Coral Sites at Junk Bay near Chiu Keng Wan
SS1	SSSI at Shek O Headland
SS2	SSSI at Cape D'Aguiar
FCZ1	Fish Culture Zone at Po Toi O
FCZ2	Fish Culture Zone at Tung Lung Chau
AM1	Spotted Occurrence of Amphioxus (historical record of summer survey)
AM2	Spotted Occurrence of Amphioxus (Yr 2006 record of summer survey)
AM3	Spotted Occurrence of Amphioxus (Yr 2006 record of summer survey)
GB1	Shek O Rocky Bay
GB2	Shek O Beach
GB3	Big Wave Bay Beach
GB4	Clear Water Bay First Beach
GB5	Clear Water Bay Second Beach



土木工程拓展署
 Civil Engineering and
 Development Department

ARUP
 Ove Arup & Partners
 Hong Kong Limited

JOB Title

Agreement No. CE 43/2008(HY)
 Cross Bay Link, Tseung Kwan O – Investigation

Drawing Title

Location of Water Quality
 Sensitive Receivers

Drawn	AN	Date	Dec 2012
Checked	KL	Approved	ST
A First Issue	4/11	Scale	
Rev	Description	Date	

Drawing No.	209506/EIA/WQ/001
Status	Final
Rev.	A



DATE

Printed by :
KUSERS
FILED



土木工程拓展署
Civil Engineering and
Development Department

ARUP One Arup & Partners
Hong Kong Limited

Job Title

Agreement No. CE 43/2008(HY)
Cross Bay Link, Tseung Kwan O – Investigation

Drawing Title

Grid Layout for Junk Bay Model

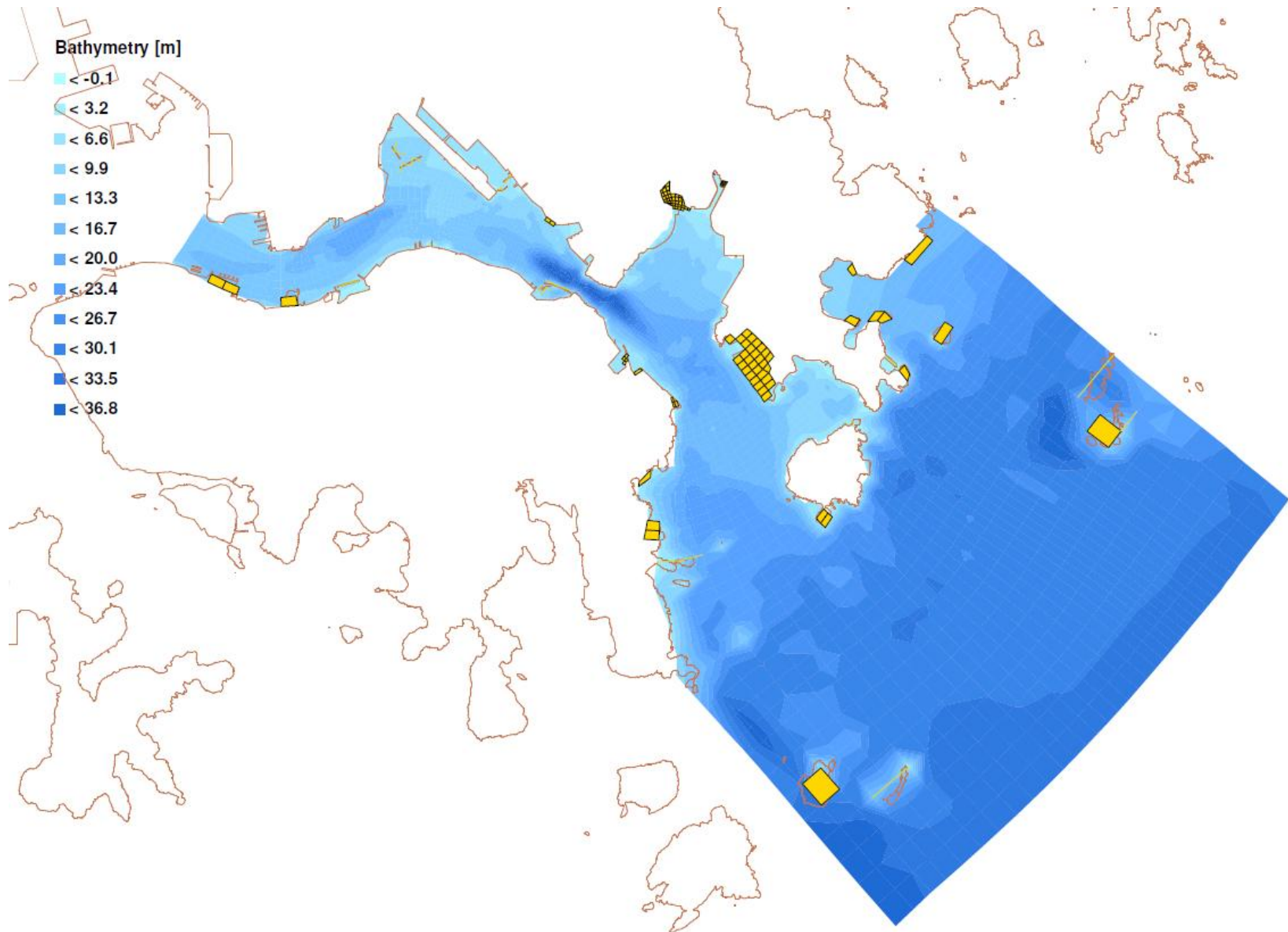
Rev	Description	Date
A	First Issue	9/09

Drawn	AN	Date	Dec 2012
Checked	KL	Approved	ST

Drawing No.	209506/EIA/WQ/002
Status	Final
Rev.	A

Bathymetry [m]

- < -0.1
- < 3.2
- < 6.6
- < 9.9
- < 13.3
- < 16.7
- < 20.0
- < 23.4
- < 26.7
- < 30.1
- < 33.5
- < 36.8



Printed by :
KUSERS
ELLERS
04/12/2012



土木工程拓展署
Civil Engineering and
Development Department

ARUP
Ove Arup & Partners
Hong Kong Limited

Job Title

Agreement No. CE 43/2008(HY)
Cross Bay Link, Tseung Kwan O – Investigation

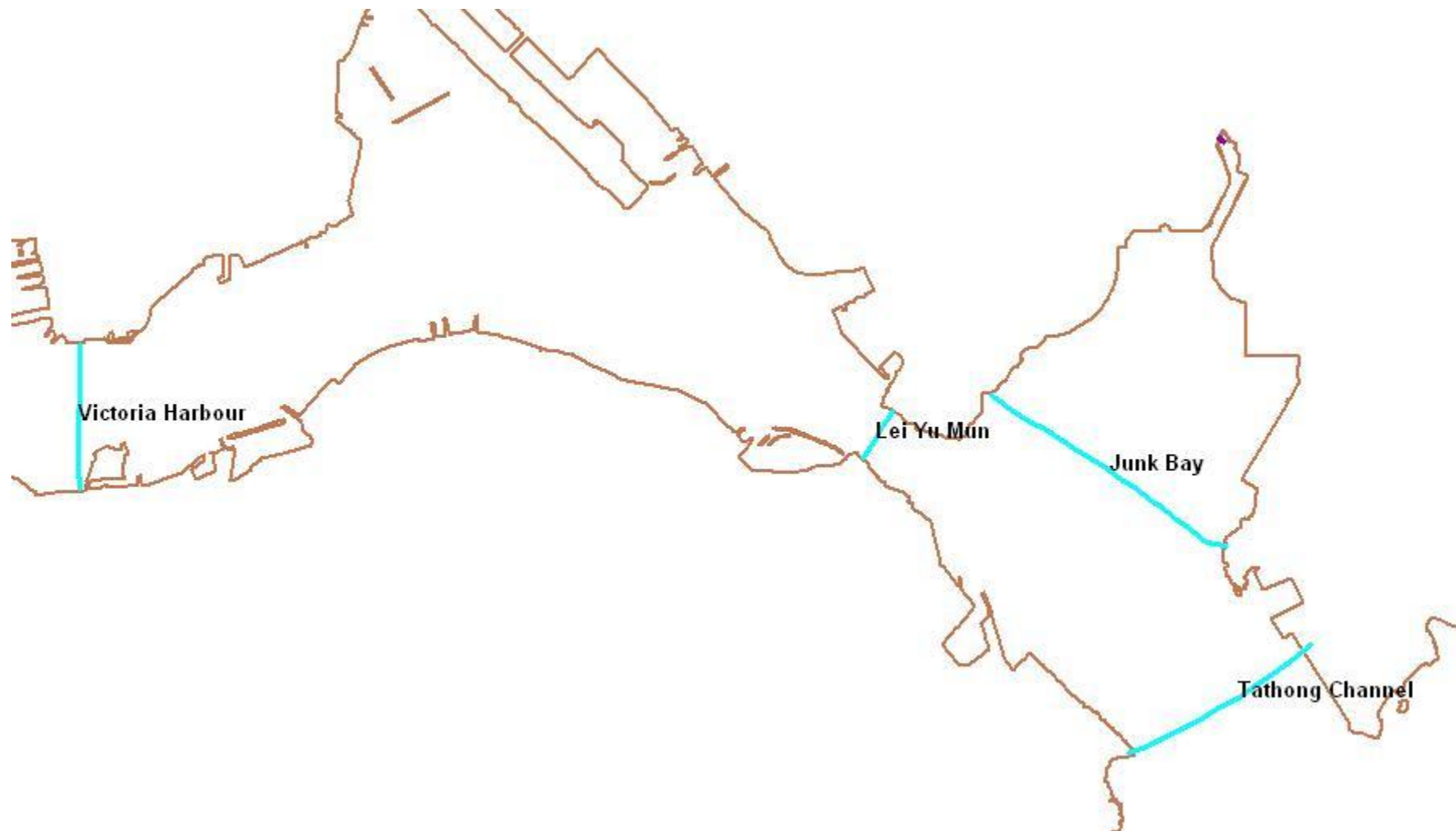
Drawing Title

Bathymetry Schematisation for
Junk Bay Model

Drawn	AN	Date	Dec 2012
Checked	KL	Approved	ST
Rev	Description	Date	
A	First Issue	9/09	

Drawn	AN	Date	Dec 2012
Checked	KL	Approved	ST
Rev	Description	Date	
A	First Issue	9/09	

Drawing No.	209506/EIA/WQ/003
Status	Final
Rev.	A



Victoria Harbour

Lei Yu Mun

Junk Bay

Tathong Channel



土木工程拓展署
Civil Engineering and
Development Department

ARUP
Ove Arup & Partners
Hong Kong Limited

JOB Title

Agreement No. CE 43/2008(HY)
Cross Bay Link, Tseung Kwan O – Investigation

Drawing Title

Cross-sections for Model Outputs

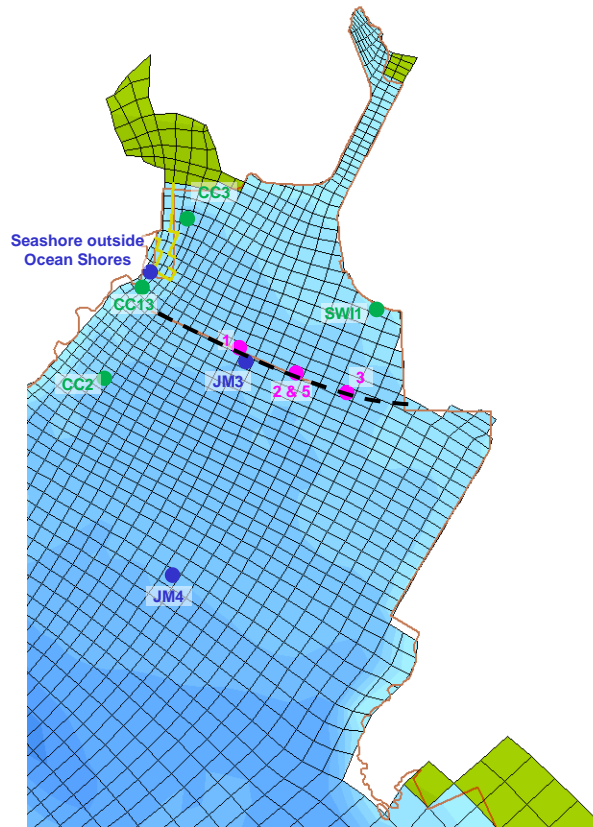
Rev	Description	Date
A	First Issue	9/09

Drawn	AN	Date	Dec 2012
Checked	KL	Approved	ST

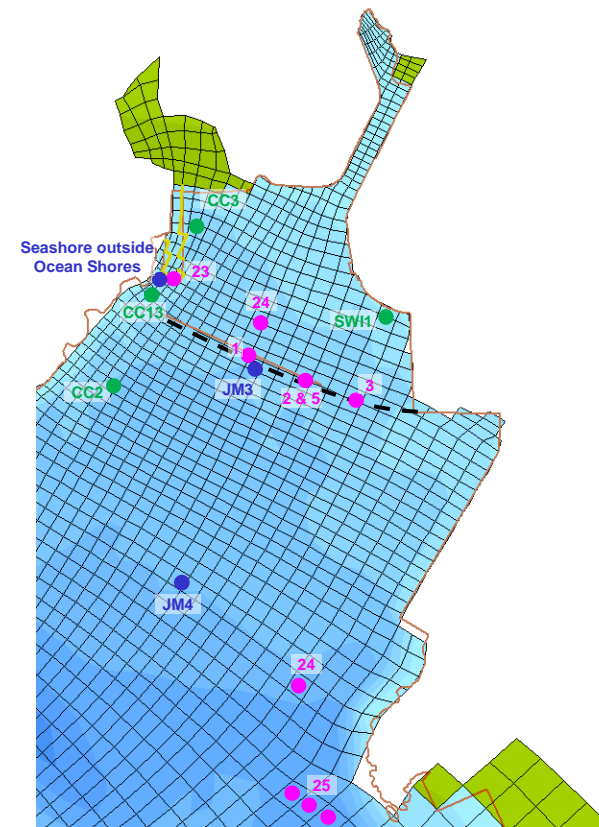
Scale

Drawing No.	209506/EIA/WQ/004
Status	Final
Rev.	A

Scenario 1a



Scenario 1c



Legend

- Major Water Sensitive Receivers
- Locations for Hydrodynamic Impact Comparison
- Sediment Release Points
 - 1 – CBL Dredging (0.06 kg/s)
 - 2 – CBL Dredging (0.06 kg/s)
 - 3 – CBL Dredging (0.06 kg/s)
 - 5 – CBL Filling (0.2 kg/s/trip)
 - 23 – LTT Reclamation (0.11 kg/s/trip)
 - 24 – Wind Farm Dredging (0.455 kg/s)
 - 25 – Wind Farm Jetting (18.43 kg/s)

Note:

[1] Sources outside Junk Bay (e.g. T2, CT) are considered far away from site and note shown in the figures
 [2] Dredging locations based on pier location (CBL), previous EIA (Wind Farm) and information from other project team (LTT)



土木工程拓展署
Civil Engineering and
Development Department

ARUP
Ove Arup & Partners
Hong Kong Limited

Job Title

Agreement No. CE 43/2008(HY)
Cross Bay Link, Tseung Kwan O – Investigation

Drawing Title

Sediment Loss Locations

Drawn	AN	Date	Dec 2012
Checked	KL	Approved	ST
A First Issue		9/09	
Rev	Description	Date	

Scale	
Status	Final
Rev	A

Drawing No.
209506/EIA/WQ/005



土木工程拓展署
 Civil Engineering and
 Development Department

ARUP
 Ove Arup & Partners
 Hong Kong Limited

Job Title

Agreement No. CE 43/2008(HY)
 Cross Bay Link, Tseung Kwan O – Investigation

Drawing Title

Image of Cage-type Silt Curtain

			Drawn	AN	Date	Dec 2012	Drawing No.	
			Checked	KL	Approved	ST	209506/EIA/WQ/006	
B Second Issue			12/12					
A First Issue			9/09	Scale				
Rev.	Description		Date	Status				Final
								Rev. B