

LEGEND:

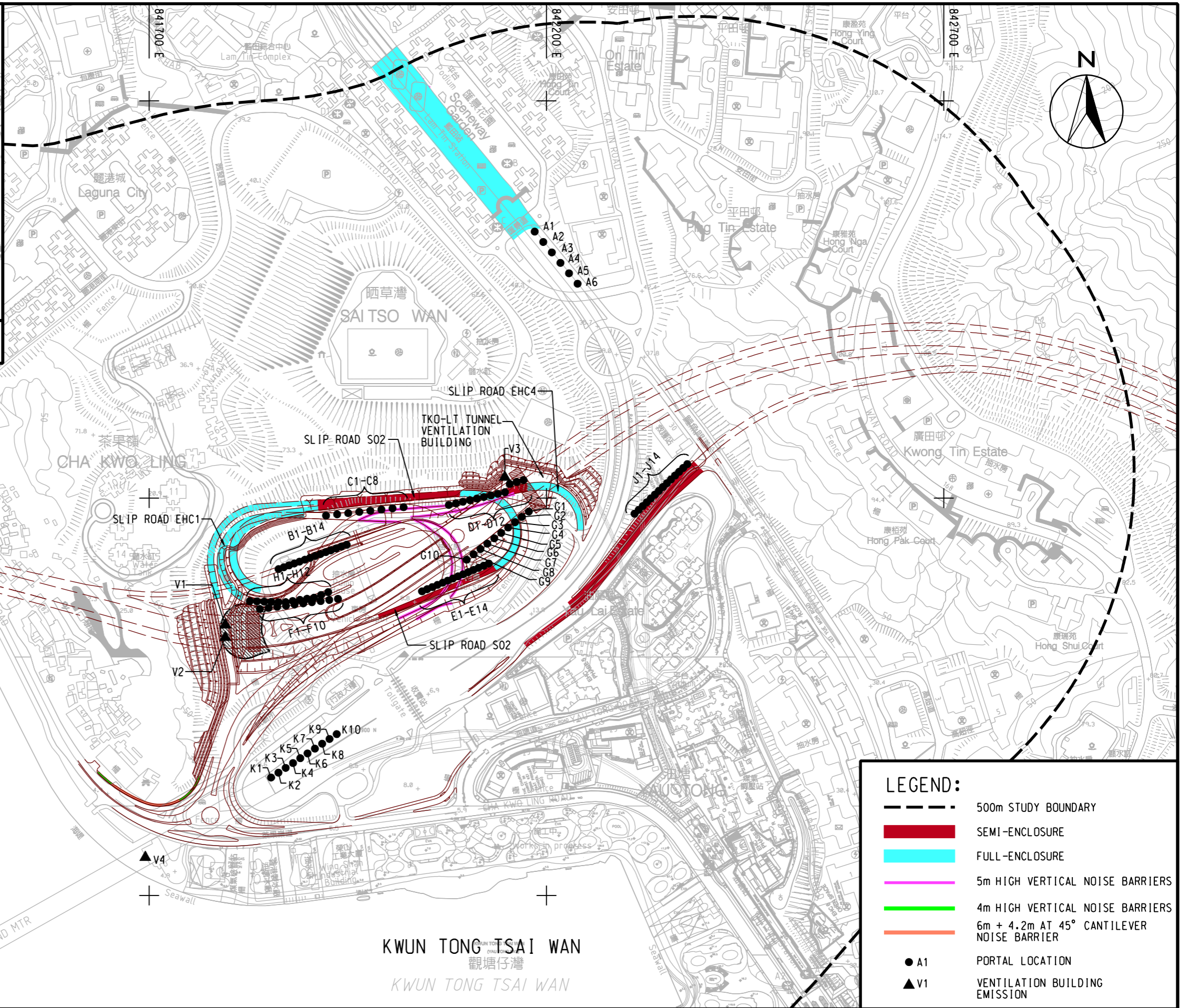
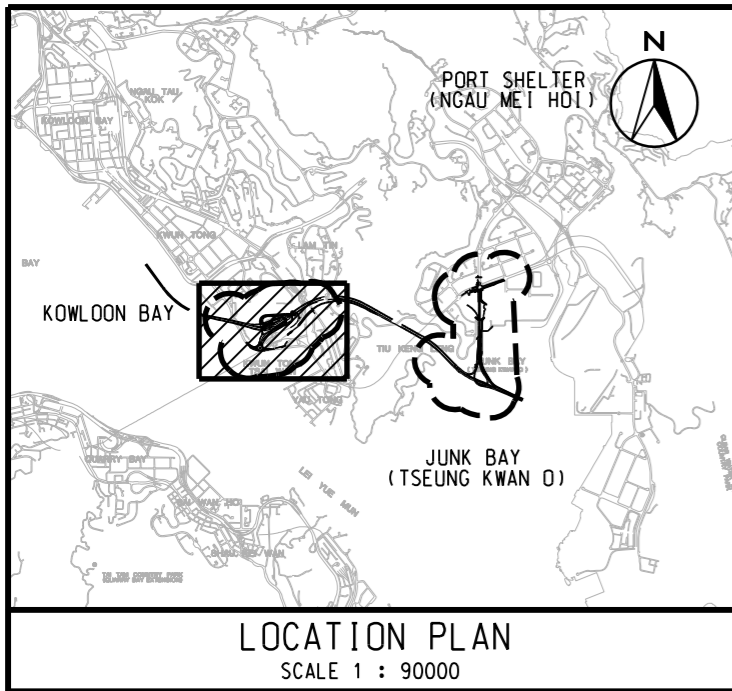
	500m STUDY BOUNDARY
	LANDSCAPE DECK
	A1 PORTAL LOCATION
	V1 VENTILATION BUILDING EMISSION

AGREEMENT NO. CE 42/2008 (CE)
 TSEUNG KWAN O - LAM TIN TUNNEL AND ASSOCIATED WORKS - INVESTIGATION
 ISC3 PORTAL LOCATIONS (TSEUNG KWAN O)



SCALE	A3 1 : 5000	DATE	NOV. 2012
CHECK	-	DRAWN	HLL
JOB No.	60097677	DRAWING No.	APPENDIX 3.7-1
		REV	-

Plot File by: J1/E2/2013 QTC/AM



AGREEMENT NO. CE 42/2008 (CE)
TSEUNG KWAN O - LAM TIN TUNNEL AND ASSOCIATED WORKS - INVESTIGATION
ISC3 PORTAL LOCATIONS (LAM TIN)

SCALE	A3 1 : 5000	DATE	NOV. 2012
CHECK	--	DRAWN	HLL
JOB No.	60097677	DRAWING No.	APPENDIX 3.7-2
		REV	-

AECOM

Plot File by: J1/12/2013 QTCAM

Calculation of Portal Emission and Emissions of Ventilation Buildings (LT)

Portal Name	Description	Percentage from Portal	Length (m)	Portal ID	Source ID	No. of Volume Source	Hour	Q (veh/hr)	Total E.F. (portal + VB)		Total emission rate (portal + VB)		Emission rate (from portal within 500m Study Area)		Emission rate (from Vent Bldg.)	
									NOX E.F. (g/mile-veh)	RSP E.F. (g/mile-veh)	NO _x (g/s)	RSP (g/s)	NOX (g/s)	RSP (g/s)	NOX (g/s)	RSP (g/s)
A	Link 179 to Link 182 (southbound)	100%	280	A1-A6	PortA	6	1	2259	0.8918	0.0384	9.735E-02	4.197E-03	4.868E-02	2.099E-03	-	-
							2	1651	0.8681	0.0380	6.925E-02	3.032E-03	3.463E-02	1.516E-03	-	-
							3	1303	0.8584	0.0378	5.407E-02	2.380E-03	2.703E-02	1.190E-03	-	-
							4	956	0.8594	0.0375	3.969E-02	1.734E-03	1.985E-02	8.670E-04	-	-
							5	869	0.8599	0.0376	3.611E-02	1.581E-03	1.805E-02	7.904E-04	-	-
							6	1077	1.0310	0.0568	5.368E-02	2.955E-03	2.684E-02	1.478E-03	-	-
							7	2334	1.1092	0.0577	1.251E-01	6.506E-03	6.256E-02	3.253E-03	-	-
							8	6104	1.0869	0.0579	3.207E-01	1.707E-02	1.603E-01	8.537E-03	-	-
							9	6643	0.9705	0.0455	3.116E-01	1.460E-02	1.558E-01	7.300E-03	-	-
							10	5925	0.9578	0.0430	2.743E-01	1.232E-02	1.371E-01	6.162E-03	-	-
							11	5027	0.9081	0.0387	2.206E-01	9.401E-03	1.103E-01	4.700E-03	-	-
							12	4489	0.9004	0.0410	1.953E-01	8.893E-03	9.766E-02	4.447E-03	-	-
							13	4129	1.0197	0.0521	2.035E-01	1.040E-02	1.018E-01	5.198E-03	-	-
							14	4399	1.0150	0.0502	2.158E-01	1.067E-02	1.079E-01	5.336E-03	-	-
							15	4578	0.9296	0.0465	2.057E-01	1.028E-02	1.028E-01	5.139E-03	-	-
							16	4605	1.0326	0.0527	2.298E-01	1.174E-02	1.149E-01	5.868E-03	-	-
							17	5039	1.1311	0.0597	2.755E-01	1.455E-02	1.377E-01	7.274E-03	-	-
							18	5560	1.0533	0.0549	2.831E-01	1.475E-02	1.415E-01	7.374E-03	-	-
							19	6081	0.9574	0.0496	2.814E-01	1.457E-02	1.407E-01	7.286E-03	-	-
							20	5213	0.9032	0.0426	2.275E-01	1.073E-02	1.138E-01	5.363E-03	-	-
							21	4170	0.8544	0.0399	1.722E-01	8.038E-03	8.610E-02	4.019E-03	-	-
							22	4083	0.9324	0.0400	1.840E-01	7.904E-03	9.201E-02	3.952E-03	-	-
							23	4170	0.9126	0.0390	1.839E-01	7.869E-03	9.196E-02	3.935E-03	-	-
							24	3562	0.9026	0.0389	1.554E-01	6.693E-03	7.769E-02	3.346E-03	-	-
							Daily							-	-	-
B	Link 189 (T2 eastbound Slip Road)	10%	3100	B1-B14	TKOLTT2	14	1	306	0.8857	0.0425	1.448E-01	6.949E-03	1.448E-02	6.949E-04	1.303E-01	6.254E-03
							2	223	0.8751	0.0413	1.046E-01	4.934E-03	1.046E-02	4.934E-04	9.410E-02	4.441E-03
							3	176	0.8703	0.0407	8.210E-02	3.835E-03	8.210E-03	3.835E-04	7.389E-02	3.451E-03
							4	129	0.8666	0.0400	5.994E-02	2.766E-03	5.994E-03	2.766E-04	5.395E-02	2.490E-03
							5	118	0.8682	0.0402	5.460E-02	2.529E-03	5.460E-03	2.529E-04	4.914E-02	2.276E-03
							6	86	0.9010	0.0518	4.137E-02	2.379E-03	4.137E-03	2.379E-04	3.724E-02	2.141E-03
							7	186	0.9295	0.0537	9.248E-02	5.348E-03	9.248E-03	5.348E-04	8.323E-02	4.813E-03
							8	486	0.9537	0.0555	2.482E-01	1.445E-02	2.482E-02	1.445E-03	2.233E-01	1.300E-02
							9	529	0.8104	0.0444	2.295E-01	1.258E-02	2.295E-02	1.258E-03	2.065E-01	1.132E-02
							10	472	0.8051	0.0406	2.033E-01	1.025E-02	2.033E-02	1.025E-03	1.830E-01	9.228E-03
							11	400	0.7409	0.0361	1.588E-01	7.728E-03	1.588E-02	7.728E-04	1.429E-01	6.955E-03
							12	358	0.7578	0.0373	1.450E-01	7.140E-03	1.450E-02	7.140E-04	1.305E-01	6.426E-03
							13	329	0.8771	0.0488	1.544E-01	8.592E-03	1.544E-02	8.592E-04	1.389E-01	7.733E-03
							14	350	0.8633	0.0473	1.619E-01	8.871E-03	1.619E-02	8.871E-04	1.457E-01	7.984E-03
							15	365	0.7892	0.0425	1.540E-01	8.297E-03	1.540E-02	8.297E-04	1.386E-01	7.468E-03
							16	623	1.0847	0.0607	3.615E-01	2.025E-02	3.615E-02	2.025E-03	3.254E-01	1.822E-02
							17	682	1.1581	0.0673	4.224E-01	2.454E-02	4.224E-02	2.454E-03	3.801E-01	2.208E-02
							18	752	1.1108	0.0639	4.471E-01	2.571E-02	4.471E-02	2.571E-03	4.024E-01	2.314E-02
							19	823	1.0072	0.0571	4.434E-01	2.513E-02	4.434E-02	2.513E-03	3.990E-01	2.261E-02
							20	705	0.8723	0.0471	3.291E-01	1.779E-02	3.291E-02	1.779E-03	2.962E-01	1.601E-02
							21	564	0.8449	0.0437	2.550E-01	1.320E-02	2.550E-02	1.320E-03	2.295E-01	1.188E-02
							22	552	0.9252	0.0459	2.734E-01	1.358E-02	2.734E-02	1.358E-03	2.461E-01	1.222E-02
							23	564	0.9027	0.0441	2.725E-01	1.331E-02	2.725E-02	1.331E-03	2.452E-01	1.198E-02
							24	482	0.8969	0.0437	2.312E-01	1.126E-02	2.312E-02	1.126E-03	2.081E-01	1.013E-02
							Daily							-	-	-

Calculation of Portal Emission and Emissions of Ventilation Buildings (LT)

Portal Name	Description	Percentage from Portal	Length (m)	Portal ID	Source ID	No. of Volume Source	Hour	Q (veh/hr)	Total E.F. (portal + VB)		Total emission rate (portal + VB)		Emission rate (from portal within 500m Study Area)		Emission rate (from Vent Bldg.)	
									NOX E.F. (g/mile-veh)	RSP E.F. (g/mile-veh)	NO _x (g/s)	RSP (g/s)	NOX (g/s)	RSP (g/s)	NOX (g/s)	RSP (g/s)
C	Link 190 & Link 226	100%	200	C1-C8	PortC	8	1	259	0.5364	0.0210	4.792E-03	1.875E-04	4.792E-03	1.875E-04	-	-
							2	189	0.5305	0.0205	3.463E-03	1.335E-04	3.463E-03	1.335E-04	-	-
							3	149	0.5283	0.0203	2.723E-03	1.044E-04	2.723E-03	1.044E-04	-	-
							4	109	0.5269	0.0200	1.991E-03	7.542E-05	1.991E-03	7.542E-05	-	-
							5	100	0.5284	0.0203	1.815E-03	6.989E-05	1.815E-03	6.989E-05	-	-
							6	176	0.7913	0.0461	4.795E-03	2.792E-04	4.795E-03	2.792E-04	-	-
							7	380	0.8173	0.0476	1.073E-02	6.246E-04	1.073E-02	6.246E-04	-	-
							8	995	0.8382	0.0488	2.878E-02	1.677E-03	2.878E-02	1.677E-03	-	-
							9	1083	0.6869	0.0370	2.567E-02	1.382E-03	2.567E-02	1.382E-03	-	-
							10	965	0.6888	0.0335	2.296E-02	1.116E-03	2.296E-02	1.116E-03	-	-
							11	819	0.6235	0.0289	1.763E-02	8.173E-04	1.763E-02	8.173E-04	-	-
							12	731	0.6419	0.0303	1.621E-02	7.643E-04	1.621E-02	7.643E-04	-	-
							13	673	0.7565	0.0418	1.757E-02	9.707E-04	1.757E-02	9.707E-04	-	-
							14	717	0.7459	0.0404	1.846E-02	1.000E-03	1.846E-02	1.000E-03	-	-
							15	746	0.6736	0.0358	1.735E-02	9.209E-04	1.735E-02	9.209E-04	-	-
							16	527	0.6584	0.0353	1.199E-02	6.434E-04	1.199E-02	6.434E-04	-	-
							17	577	0.7740	0.0450	1.542E-02	8.963E-04	1.542E-02	8.963E-04	-	-
							18	637	0.6957	0.0390	1.530E-02	8.568E-04	1.530E-02	8.568E-04	-	-
							19	697	0.6115	0.0335	1.471E-02	8.064E-04	1.471E-02	8.064E-04	-	-
							20	597	0.5387	0.0280	1.111E-02	5.762E-04	1.111E-02	5.762E-04	-	-
							21	478	0.4928	0.0230	8.127E-03	3.788E-04	8.127E-03	3.788E-04	-	-
							22	468	0.5557	0.0229	8.973E-03	3.690E-04	8.973E-03	3.690E-04	-	-
							23	478	0.5494	0.0220	9.060E-03	3.622E-04	9.060E-03	3.622E-04	-	-
							24	408	0.5446	0.0217	7.672E-03	3.060E-04	7.672E-03	3.060E-04	-	-
							Daily							-	-	-
D	Link 191	100%	100	D1-D12	Link191	12	1	590	0.4250	0.0141	4.328E-03	1.439E-04	4.328E-03	1.439E-04	-	-
							2	431	0.4207	0.0138	3.130E-03	1.027E-04	3.130E-03	1.027E-04	-	-
							3	340	0.4193	0.0138	2.463E-03	8.081E-05	2.463E-03	8.081E-05	-	-
							4	250	0.4186	0.0136	1.804E-03	5.846E-05	1.804E-03	5.846E-05	-	-
							5	227	0.4201	0.0140	1.645E-03	5.487E-05	1.645E-03	5.487E-05	-	-
							6	280	0.6342	0.0378	3.063E-03	1.828E-04	3.063E-03	1.828E-04	-	-
							7	606	0.6568	0.0387	6.873E-03	4.052E-04	6.873E-03	4.052E-04	-	-
							8	1585	0.6729	0.0392	1.841E-02	1.074E-03	1.841E-02	1.074E-03	-	-
							9	1725	0.5108	0.0264	1.521E-02	7.866E-04	1.521E-02	7.866E-04	-	-
							10	1539	0.5229	0.0233	1.389E-02	6.189E-04	1.389E-02	6.189E-04	-	-
							11	1306	0.4564	0.0187	1.029E-02	4.215E-04	1.029E-02	4.215E-04	-	-
							12	1166	0.4768	0.0202	9.594E-03	4.070E-04	9.594E-03	4.070E-04	-	-
							13	1072	0.5842	0.0317	1.081E-02	5.875E-04	1.081E-02	5.875E-04	-	-
							14	1142	0.5782	0.0306	1.140E-02	6.028E-04	1.140E-02	6.028E-04	-	-
							15	1189	0.5084	0.0261	1.043E-02	5.355E-04	1.043E-02	5.355E-04	-	-
							16	1203	0.5222	0.0272	1.084E-02	5.649E-04	1.084E-02	5.649E-04	-	-
							17	1316	0.6497	0.0378	1.476E-02	8.579E-04	1.476E-02	8.579E-04	-	-
							18	1452	0.5629	0.0310	1.411E-02	7.769E-04	1.411E-02	7.769E-04	-	-
							19	1588	0.4850	0.0260	1.330E-02	7.129E-04	1.330E-02	7.129E-04	-	-
							20	1361	0.4310	0.0218	1.013E-02	5.112E-04	1.013E-02	5.112E-04	-	-
							21	1089	0.3801	0.0163	7.145E-03	3.069E-04	7.145E-03	3.069E-04	-	-
							22	1066	0.4382	0.0155	8.066E-03	2.855E-04	8.066E-03	2.855E-04	-	-
							23	1089	0.4367	0.0149	8.210E-03	2.802E-04	8.210E-03	2.802E-04	-	-
							24	930	0.4323	0.0147	6.942E-03	2.365E-04	6.942E-03	2.365E-04	-	-
							Daily							-	-	-

Calculation of Portal Emission and Emissions of Ventilation Buildings (LT)

Portal Name	Description	Percentage from Portal	Length (m)	Portal ID	Source ID	No. of Volume Source	Hour	Q (veh/hr)	Total E.F. (portal + VB)		Total emission rate (portal + VB)		Emission rate (from portal within 500m Study Area)		Emission rate (from Vent Bldg.)		
									NOX E.F. (g/mile-veh)	RSP E.F. (g/mile-veh)	NO _x (g/s)	RSP (g/s)	NOX (g/s)	RSP (g/s)	NOX (g/s)	RSP (g/s)	
E	Link 192	100%	160	E1-E14	Link192	14	1	258	0.5434	0.0214	3.874E-03	1.527E-04	3.874E-03	1.527E-04	-	-	
							2	189	0.5375	0.0209	2.800E-03	1.087E-04	2.800E-03	1.087E-04	-	-	
							3	149	0.5352	0.0207	2.201E-03	8.499E-05	2.201E-03	8.499E-05	-	-	
							4	109	0.5338	0.0204	1.610E-03	6.140E-05	1.610E-03	6.140E-05	-	-	
							5	99	0.5353	0.0207	1.467E-03	5.687E-05	1.467E-03	5.687E-05	-	-	
							6	175	0.7938	0.0462	3.846E-03	2.238E-04	3.846E-03	2.238E-04	-	-	
							7	380	0.8200	0.0477	8.607E-03	5.008E-04	8.607E-03	5.008E-04	-	-	
							8	994	0.8409	0.0490	2.308E-02	1.345E-03	2.308E-02	1.345E-03	-	-	
							9	1082	0.6894	0.0371	2.059E-02	1.110E-03	2.059E-02	1.110E-03	-	-	
							10	965	0.6913	0.0336	1.842E-02	8.958E-04	1.842E-02	8.958E-04	-	-	
							11	819	0.6259	0.0290	1.415E-02	6.566E-04	1.415E-02	6.566E-04	-	-	
							12	731	0.6443	0.0304	1.300E-02	6.139E-04	1.300E-02	6.139E-04	-	-	
							13	672	0.7593	0.0419	1.410E-02	7.789E-04	1.410E-02	7.789E-04	-	-	
							14	716	0.7485	0.0406	1.481E-02	8.025E-04	1.481E-02	8.025E-04	-	-	
							15	745	0.6762	0.0359	1.392E-02	7.393E-04	1.392E-02	7.393E-04	-	-	
							16	526	0.6671	0.0359	9.693E-03	5.210E-04	9.693E-03	5.210E-04	-	-	
							17	576	0.7824	0.0455	1.244E-02	7.230E-04	1.244E-02	7.230E-04	-	-	
							18	635	0.7043	0.0395	1.236E-02	6.927E-04	1.236E-02	6.927E-04	-	-	
							19	695	0.6196	0.0340	1.189E-02	6.527E-04	1.189E-02	6.527E-04	-	-	
							20	596	0.5459	0.0284	8.980E-03	4.666E-04	8.980E-03	4.666E-04	-	-	
							21	476	0.5001	0.0234	6.581E-03	3.079E-04	6.581E-03	3.079E-04	-	-	
							22	467	0.5630	0.0233	7.254E-03	3.003E-04	7.254E-03	3.003E-04	-	-	
							23	476	0.5565	0.0224	7.323E-03	2.949E-04	7.323E-03	2.949E-04	-	-	
							24	407	0.5517	0.0222	6.202E-03	2.492E-04	6.202E-03	2.492E-04	-	-	
														Daily	-	-	-
F	Link 195 (T2 eastbound)	10%	3100	F1-F10	TKOLTT3	10	1	313	0.7813	0.0345	1.308E-01	5.780E-03	1.308E-02	5.780E-04	1.177E-01	5.202E-03	
							2	229	0.7822	0.0345	9.569E-02	4.224E-03	9.569E-03	4.224E-04	8.612E-02	3.802E-03	
							3	180	0.7843	0.0345	7.575E-02	3.335E-03	7.575E-03	3.335E-04	6.817E-02	3.001E-03	
							4	132	0.7860	0.0345	5.567E-02	2.445E-03	5.567E-03	2.445E-04	5.010E-02	2.201E-03	
							5	120	0.7877	0.0345	5.072E-02	2.223E-03	5.072E-03	2.223E-04	4.565E-02	2.001E-03	
							6	178	1.1493	0.0664	1.093E-01	6.310E-03	1.093E-02	6.310E-04	9.836E-02	5.679E-03	
							7	385	1.1457	0.0664	2.361E-01	1.367E-02	2.361E-02	1.367E-03	2.125E-01	1.230E-02	
							8	1007	1.1452	0.0664	6.171E-01	3.576E-02	6.171E-02	3.576E-03	5.554E-01	3.218E-02	
							9	1096	1.0491	0.0560	6.152E-01	3.284E-02	6.152E-02	3.284E-03	5.537E-01	2.956E-02	
							10	977	1.0403	0.0532	5.441E-01	2.783E-02	5.441E-02	2.783E-03	4.897E-01	2.504E-02	
							11	829	1.0007	0.0497	4.441E-01	2.203E-02	4.441E-02	2.203E-03	3.997E-01	1.983E-02	
							12	740	1.0087	0.0508	3.997E-01	2.012E-02	3.997E-02	2.012E-03	3.597E-01	1.811E-02	
							13	681	1.1172	0.0626	4.072E-01	2.282E-02	4.072E-02	2.282E-03	3.665E-01	2.054E-02	
							14	726	1.0970	0.0607	4.260E-01	2.357E-02	4.260E-02	2.357E-03	3.834E-01	2.122E-02	
							15	755	1.0265	0.0550	4.149E-01	2.224E-02	4.149E-02	2.224E-03	3.734E-01	2.001E-02	
							16	638	0.9186	0.0503	3.135E-01	1.717E-02	3.135E-02	1.717E-03	2.821E-01	1.546E-02	
							17	698	0.9697	0.0572	3.621E-01	2.137E-02	3.621E-02	2.137E-03	3.259E-01	1.924E-02	
							18	770	0.9175	0.0515	3.781E-01	2.124E-02	3.781E-02	2.124E-03	3.403E-01	1.911E-02	
							19	842	0.8334	0.0448	3.756E-01	2.018E-02	3.756E-02	2.018E-03	3.381E-01	1.816E-02	
							20	722	0.7440	0.0376	2.874E-01	1.452E-02	2.874E-02	1.452E-03	2.587E-01	1.307E-02	
							21	578	0.7298	0.0344	2.256E-01	1.063E-02	2.256E-02	1.063E-03	2.030E-01	9.564E-03	
							22	566	0.7970	0.0362	2.412E-01	1.095E-02	2.412E-02	1.095E-03	2.171E-01	9.854E-03	
							23	578	0.7797	0.0345	2.410E-01	1.067E-02	2.410E-02	1.067E-03	2.169E-01	9.604E-03	
							24	493	0.7799	0.0345	2.059E-01	9.115E-03	2.059E-02	9.115E-04	1.853E-01	8.203E-03	
														Daily	-	-	-

Calculation of Portal Emission and Emissions of Ventilation Buildings (LT)

Portal Name	Description	Percentage from Portal	Length (m)	Portal ID	Source ID	No. of Volume Source	Hour	Q (veh/hr)	Total E.F. (portal + VB)		Total emission rate (portal + VB)		Emission rate (from portal within 500m Study Area)		Emission rate (from Vent Bldg.)	
									NOX E.F. (g/mile-veh)	RSP E.F. (g/mile-veh)	NO _x (g/s)	RSP (g/s)	NOX (g/s)	RSP (g/s)	NOX (g/s)	RSP (g/s)
G	Link 198 (TKO-LTT westbound)	40%	2200	G1-G10	TKOLTT6	10	1	446	0.9565	0.0444	1.619E-01	7.509E-03	6.476E-02	3.004E-03	9.715E-02	4.506E-03
							2	326	0.9576	0.0444	1.185E-01	5.488E-03	4.738E-02	2.195E-03	7.107E-02	3.293E-03
							3	257	0.9600	0.0444	9.375E-02	4.332E-03	3.750E-02	1.733E-03	5.625E-02	2.599E-03
							4	189	0.9620	0.0444	6.889E-02	3.177E-03	2.756E-02	1.271E-03	4.134E-02	1.906E-03
							5	171	0.9640	0.0444	6.276E-02	2.888E-03	2.510E-02	1.155E-03	3.765E-02	1.733E-03
							6	187	1.1174	0.0648	7.928E-02	4.600E-03	3.171E-02	1.840E-03	4.757E-02	2.760E-03
							7	405	1.1139	0.0648	1.712E-01	9.966E-03	6.850E-02	3.986E-03	1.027E-01	5.979E-03
							8	1059	1.1134	0.0648	4.476E-01	2.606E-02	1.791E-01	1.043E-02	2.686E-01	1.564E-02
							9	1152	1.0149	0.0542	4.441E-01	2.370E-02	1.776E-01	9.481E-03	2.664E-01	1.422E-02
							10	1028	1.0079	0.0514	3.933E-01	2.007E-02	1.573E-01	8.029E-03	2.360E-01	1.204E-02
							11	872	0.9675	0.0478	3.203E-01	1.583E-02	1.281E-01	6.330E-03	1.922E-01	9.496E-03
							12	779	0.9760	0.0490	2.885E-01	1.448E-02	1.154E-01	5.790E-03	1.731E-01	8.685E-03
							13	716	1.0837	0.0609	2.948E-01	1.656E-02	1.179E-01	6.626E-03	1.769E-01	9.938E-03
							14	763	1.0642	0.0590	3.083E-01	1.710E-02	1.233E-01	6.841E-03	1.850E-01	1.026E-02
							15	794	0.9942	0.0533	2.998E-01	1.609E-02	1.199E-01	6.435E-03	1.799E-01	9.652E-03
							16	909	1.1253	0.0612	3.883E-01	2.110E-02	1.553E-01	8.441E-03	2.330E-01	1.266E-02
							17	994	1.1546	0.0659	4.360E-01	2.487E-02	1.744E-01	9.948E-03	2.616E-01	1.492E-02
							18	1097	1.1159	0.0616	4.649E-01	2.567E-02	1.860E-01	1.027E-02	2.790E-01	1.540E-02
							19	1200	1.0228	0.0544	4.661E-01	2.479E-02	1.864E-01	9.914E-03	2.797E-01	1.487E-02
							20	1029	0.9068	0.0455	3.542E-01	1.775E-02	1.417E-01	7.101E-03	2.125E-01	1.065E-02
							21	823	0.9037	0.0435	2.824E-01	1.360E-02	1.130E-01	5.438E-03	1.694E-01	8.157E-03
							22	806	0.9797	0.0465	2.998E-01	1.423E-02	1.199E-01	5.690E-03	1.799E-01	8.535E-03
							23	823	0.9548	0.0444	2.984E-01	1.386E-02	1.193E-01	5.545E-03	1.790E-01	8.318E-03
							24	703	0.9550	0.0444	2.549E-01	1.184E-02	1.020E-01	4.737E-03	1.529E-01	7.105E-03
							Daily							-	-	-
H	Link 225	100%	200	H1-H12	Link225	12	1	603	0.5208	0.0200	1.084E-02	4.170E-04	1.084E-02	4.170E-04	-	-
							2	441	0.5152	0.0195	7.838E-03	2.971E-04	7.838E-03	2.971E-04	-	-
							3	348	0.5131	0.0193	6.162E-03	2.324E-04	6.162E-03	2.324E-04	-	-
							4	255	0.5118	0.0191	4.508E-03	1.679E-04	4.508E-03	1.679E-04	-	-
							5	232	0.5133	0.0195	4.110E-03	1.558E-04	4.110E-03	1.558E-04	-	-
							6	186	0.6230	0.0373	4.008E-03	2.397E-04	4.008E-03	2.397E-04	-	-
							7	404	0.6454	0.0381	8.996E-03	5.310E-04	8.996E-03	5.310E-04	-	-
							8	1056	0.6611	0.0386	2.410E-02	1.406E-03	2.410E-02	1.406E-03	-	-
							9	1149	0.4984	0.0257	1.977E-02	1.018E-03	1.977E-02	1.018E-03	-	-
							10	1025	0.5112	0.0226	1.809E-02	7.991E-04	1.809E-02	7.991E-04	-	-
							11	870	0.4446	0.0180	1.335E-02	5.399E-04	1.335E-02	5.399E-04	-	-
							12	776	0.4652	0.0195	1.247E-02	5.232E-04	1.247E-02	5.232E-04	-	-
							13	714	0.5720	0.0310	1.410E-02	7.650E-04	1.410E-02	7.650E-04	-	-
							14	761	0.5663	0.0299	1.488E-02	7.847E-04	1.488E-02	7.847E-04	-	-
							15	792	0.4966	0.0254	1.358E-02	6.947E-04	1.358E-02	6.947E-04	-	-
							16	1229	0.6395	0.0342	2.714E-02	1.452E-03	2.714E-02	1.452E-03	-	-
							17	1345	0.7572	0.0440	3.517E-02	2.044E-03	3.517E-02	2.044E-03	-	-
							18	1485	0.6773	0.0379	3.471E-02	1.940E-03	3.471E-02	1.940E-03	-	-
							19	1624	0.5939	0.0325	3.329E-02	1.821E-03	3.329E-02	1.821E-03	-	-
							20	1392	0.5241	0.0271	2.518E-02	1.302E-03	2.518E-02	1.302E-03	-	-
							21	1113	0.4772	0.0221	1.834E-02	8.475E-04	1.834E-02	8.475E-04	-	-
							22	1090	0.5391	0.0218	2.029E-02	8.211E-04	2.029E-02	8.211E-04	-	-
							23	1113	0.5336	0.0210	2.051E-02	8.062E-04	2.051E-02	8.062E-04	-	-
							24	951	0.5289	0.0207	1.737E-02	6.811E-04	1.737E-02	6.811E-04	-	-
							Daily							-	-	-

Calculation of Portal Emission and Emissions of Ventilation Buildings (LT)

Portal Name	Description	Percentage from Portal	Length (m)	Portal ID	Source ID	No. of Volume Source	Hour	Q (veh/hr)	Total E.F. (portal + VB)		Total emission rate (portal + VB)		Emission rate (from portal within 500m Study Area)		Emission rate (from Vent Bldg.)	
									NOX E.F. (g/mile-veh)	RSP E.F. (g/mile-veh)	NO _x (g/s)	RSP (g/s)	NOX (g/s)	RSP (g/s)	NOX (g/s)	RSP (g/s)
J	Link 245 (TKO-LTT westbound slip road)	40%	2200	J1-J14	Link245	14	1	168	0.6985	0.0299	4.454E-02	1.905E-03	1.782E-02	7.622E-04	2.673E-02	1.143E-03
							2	123	0.6993	0.0299	3.259E-02	1.392E-03	1.304E-02	5.570E-04	1.955E-02	8.355E-04
							3	97	0.7012	0.0299	2.580E-02	1.099E-03	1.032E-02	4.397E-04	1.548E-02	6.596E-04
							4	71	0.7029	0.0299	1.896E-02	8.062E-04	7.586E-03	3.225E-04	1.138E-02	4.837E-04
							5	65	0.7044	0.0299	1.728E-02	7.329E-04	6.911E-03	2.932E-04	1.037E-02	4.397E-04
							6	241	0.5209	0.0362	4.760E-02	3.312E-03	1.904E-02	1.325E-03	2.856E-02	1.987E-03
							7	521	0.5192	0.0362	1.028E-01	7.176E-03	4.112E-02	2.871E-03	6.168E-02	4.306E-03
							8	1364	0.5190	0.0363	2.687E-01	1.877E-02	1.075E-01	7.509E-03	1.612E-01	1.126E-02
							9	1484	0.3904	0.0207	2.200E-01	1.165E-02	8.799E-02	4.662E-03	1.320E-01	6.993E-03
							10	1323	0.4138	0.0190	2.080E-01	9.547E-03	8.318E-02	3.819E-03	1.248E-01	5.728E-03
							11	1123	0.3626	0.0140	1.546E-01	5.960E-03	6.185E-02	2.384E-03	9.277E-02	3.576E-03
							12	1003	0.3771	0.0159	1.436E-01	6.041E-03	5.743E-02	2.416E-03	8.614E-02	3.624E-03
							13	922	0.4616	0.0292	1.617E-01	1.023E-02	6.468E-02	4.091E-03	9.701E-02	6.137E-03
							14	983	0.4570	0.0279	1.705E-01	1.042E-02	6.820E-02	4.168E-03	1.023E-01	6.252E-03
							15	1023	0.3955	0.0223	1.536E-01	8.679E-03	6.144E-02	3.472E-03	9.216E-02	5.207E-03
							16	342	0.8208	0.0452	1.067E-01	5.875E-03	4.268E-02	2.350E-03	6.402E-02	3.525E-03
							17	375	0.8812	0.0531	1.254E-01	7.555E-03	5.015E-02	3.022E-03	7.522E-02	4.533E-03
							18	413	0.8234	0.0468	1.293E-01	7.341E-03	5.171E-02	2.936E-03	7.756E-02	4.404E-03
							19	452	0.7438	0.0402	1.277E-01	6.903E-03	5.108E-02	2.761E-03	7.662E-02	4.142E-03
							20	388	0.6663	0.0338	9.806E-02	4.977E-03	3.922E-02	1.991E-03	5.883E-02	2.986E-03
							21	310	0.6473	0.0301	7.621E-02	3.539E-03	3.049E-02	1.415E-03	4.573E-02	2.123E-03
							22	304	0.7109	0.0313	8.195E-02	3.611E-03	3.278E-02	1.444E-03	4.917E-02	2.166E-03
							23	310	0.6970	0.0299	8.206E-02	3.518E-03	3.283E-02	1.407E-03	4.924E-02	2.111E-03
							24	265	0.6972	0.0299	7.012E-02	3.005E-03	2.805E-02	1.202E-03	4.207E-02	1.803E-03
							Daily							-	-	-
K	Eastern Harbour Crossing	30%	1800	K1-K10	EHC2	10	1	1279	0.5702	0.0231	2.265E-01	9.163E-03	6.796E-02	2.749E-03	1.586E-01	6.414E-03
							2	935	0.5709	0.0231	1.658E-01	6.696E-03	4.974E-02	2.009E-03	1.160E-01	4.687E-03
							3	738	0.5727	0.0231	1.313E-01	5.286E-03	3.939E-02	1.586E-03	9.190E-02	3.700E-03
							4	541	0.5742	0.0231	9.653E-02	3.877E-03	2.896E-02	1.163E-03	6.757E-02	2.714E-03
							5	492	0.5757	0.0231	8.798E-02	3.524E-03	2.639E-02	1.057E-03	6.158E-02	2.467E-03
							6	614	0.6194	0.0410	1.181E-01	7.817E-03	3.542E-02	2.345E-03	8.264E-02	5.472E-03
							7	1329	0.6174	0.0410	2.550E-01	1.694E-02	7.649E-02	5.081E-03	1.785E-01	1.186E-02
							8	3477	0.6249	0.0400	6.750E-01	4.324E-02	2.025E-01	1.297E-02	4.725E-01	3.027E-02
							9	3783	0.4992	0.0254	5.868E-01	2.981E-02	1.760E-01	8.944E-03	4.108E-01	2.087E-02
							10	3374	0.5201	0.0238	5.453E-01	2.491E-02	1.636E-01	7.472E-03	3.817E-01	1.743E-02
							11	2863	0.4685	0.0190	4.167E-01	1.691E-02	1.250E-01	5.073E-03	2.917E-01	1.184E-02
							12	2556	0.4750	0.0211	3.772E-01	1.679E-02	1.132E-01	5.038E-03	2.641E-01	1.176E-02
							13	2352	0.5648	0.0341	4.127E-01	2.493E-02	1.238E-01	7.480E-03	2.889E-01	1.745E-02
							14	2505	0.5605	0.0326	4.363E-01	2.541E-02	1.309E-01	7.622E-03	3.054E-01	1.778E-02
							15	2607	0.4941	0.0275	4.003E-01	2.231E-02	1.201E-01	6.692E-03	2.802E-01	1.561E-02
							16	2607	0.6615	0.0367	5.358E-01	2.973E-02	1.607E-01	8.918E-03	3.751E-01	2.081E-02
							17	2853	0.7518	0.0460	6.664E-01	4.076E-02	1.999E-01	1.223E-02	4.665E-01	2.853E-02
							18	3148	0.6768	0.0386	6.619E-01	3.773E-02	1.986E-01	1.132E-02	4.633E-01	2.641E-02
							19	3443	0.6022	0.0330	6.442E-01	3.535E-02	1.933E-01	1.060E-02	4.510E-01	2.474E-02
							20	2951	0.5583	0.0285	5.120E-01	2.611E-02	1.536E-01	7.832E-03	3.584E-01	1.827E-02
							21	2361	0.5165	0.0242	3.789E-01	1.775E-02	1.137E-01	5.326E-03	2.652E-01	1.243E-02
							22	2312	0.5768	0.0239	4.143E-01	1.715E-02	1.243E-01	5.145E-03	2.900E-01	1.201E-02
							23	2361	0.5688	0.0231	4.172E-01	1.692E-02	1.252E-01	5.075E-03	2.921E-01	1.184E-02
							24	2017	0.5690	0.0231	3.565E-01	1.445E-02	1.070E-01	4.335E-03	2.496E-01	1.011E-02
							Daily							-	-	-

Calculation of Portal Emission and Emissions of Ventilation Buildings (LT)

Portal Name	Description	Percentage from Portal	Length (m)	Portal ID	Source ID	No. of Volume Source	Hour	Q (veh/hr)	Total E.F. (portal + VB)		Total emission rate (portal + VB)		Emission rate (from portal within 500m Study Area)		Emission rate (from Vent Bldg.)	
									NOX E.F. (g/mile-veh)	RSP E.F. (g/mile-veh)	NO _x (g/s)	RSP (g/s)	NOX (g/s)	RSP (g/s)	NOX (g/s)	RSP (g/s)
-	Link 188 (T2 westbound)	10%	3100	-	TKOLTT1	-	1	572	0.8173	0.0366	2.504E-01	1.120E-02	-	-	2.253E-01	1.008E-02
							2	418	0.8183	0.0366	1.832E-01	8.182E-03	-	-	1.649E-01	7.364E-03
							3	330	0.8204	0.0366	1.450E-01	6.459E-03	-	-	1.305E-01	5.813E-03
							4	242	0.8222	0.0366	1.066E-01	4.737E-03	-	-	9.590E-02	4.263E-03
							5	220	0.8240	0.0366	9.708E-02	4.306E-03	-	-	8.737E-02	3.876E-03
							6	308	0.9544	0.0570	1.573E-01	9.400E-03	-	-	1.416E-01	8.460E-03
							7	668	0.9514	0.0570	3.399E-01	2.037E-02	-	-	3.059E-01	1.833E-02
							8	1746	0.9509	0.0570	8.884E-01	5.327E-02	-	-	7.996E-01	4.794E-02
							9	1900	0.8414	0.0449	8.554E-01	4.562E-02	-	-	7.699E-01	4.106E-02
							10	1695	0.8434	0.0425	7.648E-01	3.850E-02	-	-	6.883E-01	3.465E-02
							11	1438	0.7992	0.0384	6.149E-01	2.954E-02	-	-	5.534E-01	2.658E-02
							12	1284	0.8097	0.0398	5.562E-01	2.732E-02	-	-	5.006E-01	2.459E-02
							13	1181	0.9131	0.0522	5.771E-01	3.299E-02	-	-	5.194E-01	2.969E-02
							14	1258	0.8970	0.0505	6.039E-01	3.398E-02	-	-	5.435E-01	3.058E-02
							15	1309	0.8298	0.0448	5.814E-01	3.141E-02	-	-	5.233E-01	2.827E-02
							16	1167	0.9612	0.0526	6.002E-01	3.281E-02	-	-	5.401E-01	2.953E-02
							17	1277	1.0080	0.0590	6.888E-01	4.033E-02	-	-	6.199E-01	3.630E-02
							18	1409	0.9584	0.0536	7.226E-01	4.042E-02	-	-	6.503E-01	3.638E-02
							19	1541	0.8724	0.0467	7.195E-01	3.855E-02	-	-	6.475E-01	3.470E-02
							20	1321	0.7777	0.0392	5.497E-01	2.771E-02	-	-	4.948E-01	2.494E-02
							21	1057	0.7657	0.0363	4.330E-01	2.051E-02	-	-	3.897E-01	1.846E-02
							22	1035	0.8346	0.0383	4.621E-01	2.121E-02	-	-	4.159E-01	1.909E-02
							23	1057	0.8158	0.0366	4.613E-01	2.067E-02	-	-	4.152E-01	1.860E-02
							24	903	0.8159	0.0366	3.941E-01	1.766E-02	-	-	3.547E-01	1.589E-02
Daily							-	-	-	-	1.175E+01	6.171E-01	-	-	1.058E+01	5.554E-01

Calculation of Portal Emission and Emissions of Ventilation Buildings (LT)

Road ID	Height (m)	Width (m)	Base Height (m)	Source ID	X	Y	Daily Emission Factor (QS) (g/s)					total nox	total rsp
							NOx	RSP	HS	SY	SZ		
Link 179 to Link 182 (southbound)	6	17	28.5	A1	842185.1	818535.5	4.906E-01	2.365E-02	3.00	7.91	2.79		
	"	"	"	A2	842195.9	818522.4	4.906E-01	2.365E-02	3.00	7.91	2.79		
	"	"	"	A3	842206.7	818509.3	4.906E-01	2.365E-02	3.00	7.91	2.79		
	"	"	"	A4	842217.5	818496.1	2.453E-01	1.183E-02	3.00	7.91	2.79		
	"	"	"	A5	842228.3	818483.0	2.453E-01	1.183E-02	3.00	7.91	2.79		
	"	"	"	A6	842239.1	818469.9	2.453E-01	1.183E-02	3.00	7.91	2.79	2.208E+00	1.064E-01
Link 189 (T2 eastbound Slip Road)	6.2	7	0	B1	841862.8	818110.7	4.829E-02	2.585E-03	3.10	3.26	2.88		
	"	"	"	B2	841869.4	818113.0	4.829E-02	2.585E-03	3.10	3.26	2.88		
	"	"	"	B3	841876.0	818115.4	4.829E-02	2.585E-03	3.10	3.26	2.88		
	"	"	"	B4	841882.6	818117.8	4.829E-02	2.585E-03	3.10	3.26	2.88		
	"	"	"	B5	841889.2	818120.1	4.829E-02	2.585E-03	3.10	3.26	2.88		
	"	"	"	B6	841895.8	818122.5	4.829E-02	2.585E-03	3.10	3.26	2.88		
	"	"	"	B7	841902.4	818124.9	4.829E-02	2.585E-03	3.10	3.26	2.88		
	"	"	"	B8	841909.0	818127.2	2.415E-02	1.292E-03	3.10	3.26	2.88		
	"	"	"	B9	841915.6	818129.6	2.415E-02	1.292E-03	3.10	3.26	2.88		
	"	"	"	B10	841922.1	818132.0	2.415E-02	1.292E-03	3.10	3.26	2.88		
	"	"	"	B11	841928.7	818134.3	2.415E-02	1.292E-03	3.10	3.26	2.88		
	"	"	"	B12	841935.3	818136.7	2.415E-02	1.292E-03	3.10	3.26	2.88		
	"	"	"	B13	841941.9	818139.1	2.415E-02	1.292E-03	3.10	3.26	2.88		
	"	"	"	B14	841948.5	818141.4	2.415E-02	1.292E-03	3.10	3.26	2.88	5.071E-01	2.714E-02
Link 190 & Link 226	8	14	9.1	C1	841922.6	818178.1	4.955E-02	2.553E-03	4.00	6.51	3.72		
	"	"	"	C2	841936.5	818179.6	4.955E-02	2.553E-03	4.00	6.51	3.72		
	"	"	"	C3	841950.4	818181.1	4.955E-02	2.553E-03	4.00	6.51	3.72		
	"	"	"	C4	841964.4	818182.6	4.955E-02	2.553E-03	4.00	6.51	3.72		
	"	"	"	C5	841978.3	818184.1	2.477E-02	1.276E-03	4.00	6.51	3.72		
	"	"	"	C6	841992.2	818185.6	2.477E-02	1.276E-03	4.00	6.51	3.72		
	"	"	"	C7	842006.2	818187.1	2.477E-02	1.276E-03	4.00	6.51	3.72		
	"	"	"	C8	842020.1	818188.6	2.477E-02	1.276E-03	4.00	6.51	2.79	2.973E-01	1.532E-02
Link 191	8	9	15.2	D1	842141.3	818213.9	2.409E-02	1.177E-03	4.00	4.19	3.72		
	"	"	"	D2	842132.6	818211.4	2.409E-02	1.177E-03	4.00	4.19	3.72		
	"	"	"	D3	842124.0	818209.0	2.409E-02	1.177E-03	4.00	4.19	3.72		
	"	"	"	D4	842117.9	818198.5	2.409E-02	1.177E-03	4.00	4.19	3.72		
	"	"	"	D5	842109.0	818196.5	2.409E-02	1.177E-03	4.00	4.19	3.72		
	"	"	"	D6	842100.2	818194.5	2.409E-02	1.177E-03	4.00	4.19	3.72		
	"	"	"	D7	842091.4	818192.5	1.205E-02	5.886E-04	4.00	4.19	3.72		
	"	"	"	D8	842082.6	818190.5	1.205E-02	5.886E-04	4.00	4.19	3.72		
	"	"	"	D9	842073.8	818188.5	1.205E-02	5.886E-04	4.00	4.19	3.72		
	"	"	"	D10	842065.0	818186.5	1.205E-02	5.886E-04	4.00	4.19	3.72		
	"	"	"	D11	842056.2	818184.5	1.205E-02	5.886E-04	4.00	4.19	3.72		
	"	"	"	D12	842047.4	818182.5	1.205E-02	5.886E-04	4.00	4.19	3.72	2.168E-01	1.060E-02
Link 192	8	7	0	E1	842103.8	818105.5	2.278E-02	1.175E-03	4.00	3.26	3.72		
	"	"	"	E2	842097.4	818102.9	2.278E-02	1.175E-03	4.00	3.26	3.72		
	"	"	"	E3	842090.9	818100.2	2.278E-02	1.175E-03	4.00	3.26	3.72		
	"	"	"	E4	842084.4	818097.5	2.278E-02	1.175E-03	4.00	3.26	3.72		
	"	"	"	E5	842078.0	818094.8	2.278E-02	1.175E-03	4.00	3.26	3.72		
	"	"	"	E6	842071.5	818092.1	2.278E-02	1.175E-03	4.00	3.26	3.72		
	"	"	"	E7	842065.0	818089.4	2.278E-02	1.175E-03	4.00	3.26	3.72		
	"	"	"	E8	842058.6	818086.7	1.139E-02	5.876E-04	4.00	3.26	3.72		
	"	"	"	E9	842052.1	818084.0	1.139E-02	5.876E-04	4.00	3.26	3.72		
	"	"	"	E10	842045.7	818081.3	1.139E-02	5.876E-04	4.00	3.26	3.72		
	"	"	"	E11	842039.2	818078.7	1.139E-02	5.876E-04	4.00	3.26	3.72		
	"	"	"	E12	842032.7	818076.0	1.139E-02	5.876E-04	4.00	3.26	3.72		
	"	"	"	E13	842026.3	818073.3	1.139E-02	5.876E-04	4.00	3.26	3.72		
	"	"	"	E14	842019.8	818070.6	1.139E-02	5.876E-04	4.00	3.26	3.72	2.392E-01	1.234E-02
Link 195 (T2 eastbound)	6.2	11	0	F1	841839.4	818060.4	9.670E-02	5.080E-03	3.10	5.12	2.88		
	"	"	"	F2	841850.3	818061.9	9.670E-02	5.080E-03	3.10	5.12	2.88		
	"	"	"	F3	841861.2	818063.3	9.670E-02	5.080E-03	3.10	5.12	2.88		
	"	"	"	F4	841872.1	818064.7	9.670E-02	5.080E-03	3.10	5.12	2.88		
	"	"	"	F5	841883.0	818066.1	9.670E-02	5.080E-03	3.10	5.12	2.88		
	"	"	"	F6	841893.9	818067.6	4.835E-02	2.540E-03	3.10	5.12	2.88		
	"	"	"	F7	841904.8	818069.0	4.835E-02	2.540E-03	3.10	5.12	2.88		
	"	"	"	F8	841915.7	818070.4	4.835E-02	2.540E-03	3.10	5.12	2.88		
	"	"	"	F9	841926.6	818071.8	4.835E-02	2.540E-03	3.10	5.12	2.88		
	"	"	"	F10	841937.5	818073.3	4.835E-02	2.540E-03	3.10	5.12	2.88	7.253E-01	3.810E-02

Calculation of Portal Emission and Emissions of Ventilation Buildings (LT)

Road ID	Height (m)	Width (m)	Base Height (m)	Source ID	X	Y	Daily Emission Factor (QS) (g/s)					total nox	total rsp
							NOx	RSP	HS	SY	SZ		
Link 198 (TKO-LTT westbound)	9.5	11	0	G1	842177.8	818183.1	3.626E-01	1.896E-02	4.75	5.12	4.42		
	"	"	"	G2	842169.1	818176.4	3.626E-01	1.896E-02	4.75	5.12	4.42		
	"	"	"	G3	842160.4	818169.7	3.626E-01	1.896E-02	4.75	5.12	4.42		
	"	"	"	G4	842151.7	818162.9	3.626E-01	1.896E-02	4.75	5.12	4.42		
	"	"	"	G5	842143.0	818156.2	3.626E-01	1.896E-02	4.75	5.12	4.42		
	"	"	"	G6	842134.3	818149.5	1.813E-01	9.482E-03	4.75	5.12	4.42		
	"	"	"	G7	842125.6	818142.7	1.813E-01	9.482E-03	4.75	5.12	4.42		
	"	"	"	G8	842116.9	818136.0	1.813E-01	9.482E-03	4.75	5.12	4.42		
	"	"	"	G9	842108.1	818129.3	1.813E-01	9.482E-03	4.75	5.12	4.42		
	"	"	"	G10	842099.5	818122.5	1.813E-01	9.482E-03	4.75	5.12	4.42	2.719E+00	1.422E-01
Link 225	8	9	0	H1	841826.6	818070.4	4.542E-02	2.254E-03	4.00	4.19	3.72		
	"	"	"	H2	841835.6	818070.0	4.542E-02	2.254E-03	4.00	4.19	3.72		
	"	"	"	H3	841844.6	818069.7	4.542E-02	2.254E-03	4.00	4.19	3.72		
	"	"	"	H4	841853.6	818069.4	4.542E-02	2.254E-03	4.00	4.19	3.72		
	"	"	"	H5	841862.7	818069.1	4.542E-02	2.254E-03	4.00	4.19	3.72		
	"	"	"	H6	841871.7	818069.1	4.542E-02	2.254E-03	4.00	4.19	3.72		
	"	"	"	H7	841880.6	818070.5	2.271E-02	1.127E-03	4.00	4.19	3.72		
	"	"	"	H8	841889.6	818071.9	2.271E-02	1.127E-03	4.00	4.19	3.72		
	"	"	"	H9	841898.6	818073.3	2.271E-02	1.127E-03	4.00	4.19	3.72		
	"	"	"	H10	841907.5	818074.7	2.271E-02	1.127E-03	4.00	4.19	3.72		
	"	"	"	H11	841916.4	818078.1	2.271E-02	1.127E-03	4.00	4.19	3.72		
	"	"	"	H12	841925.3	818081.7	2.271E-02	1.127E-03	4.00	4.19	3.72	4.088E-01	2.029E-02
Link 245 (TKO-LTT westbound slip roac	9.5	7	17.5	J1	842377.1	818242.8	1.016E-01	5.488E-03	4.75	3.26	4.42		
	"	"	"	J2	842372.0	818238.0	1.016E-01	5.488E-03	4.75	3.26	4.42		
	"	"	"	J3	842366.9	818233.2	1.016E-01	5.488E-03	4.75	3.26	4.42		
	"	"	"	J4	842361.8	818228.4	1.016E-01	5.488E-03	4.75	3.26	4.42		
	"	"	"	J5	842356.7	818223.6	1.016E-01	5.488E-03	4.75	3.26	4.42		
	"	"	"	J6	842351.6	818218.8	1.016E-01	5.488E-03	4.75	3.26	4.42		
	"	"	"	J7	842346.5	818214.0	1.016E-01	5.488E-03	4.75	3.26	4.42		
	"	"	"	J8	842341.4	818209.2	5.081E-02	2.744E-03	4.75	3.26	4.42		
	"	"	"	J9	842336.3	818204.4	5.081E-02	2.744E-03	4.75	3.26	4.42		
	"	"	"	J10	842331.2	818199.6	5.081E-02	2.744E-03	4.75	3.26	4.42		
	"	"	"	J11	842326.1	818194.8	5.081E-02	2.744E-03	4.75	3.26	4.42		
	"	"	"	J12	842321.0	818190.0	5.081E-02	2.744E-03	4.75	3.26	4.42		
	"	"	"	J13	842315.9	818185.2	5.081E-02	2.744E-03	4.75	3.26	4.42		
	"	"	"	J14	842310.8	818180.4	5.081E-02	2.744E-03	4.75	3.26	4.42	1.067E+00	5.762E-02
Eastern Harbour Crossing	10	11	3.8	K1	841853.4	817848.4	3.807E-01	1.974E-02	5.00	5.12	4.65		
	"	"	"	K2	841862.6	817854.5	3.807E-01	1.974E-02	5.00	5.12	4.65		
	"	"	"	K3	841871.8	817860.5	3.807E-01	1.974E-02	5.00	5.12	4.65		
	"	"	"	K4	841881.0	817866.6	3.807E-01	1.974E-02	5.00	5.12	4.65		
	"	"	"	K5	841890.1	817872.7	3.807E-01	1.974E-02	5.00	5.12	4.65		
	"	"	"	K6	841899.3	817878.7	1.904E-01	9.871E-03	5.00	5.12	4.65		
	"	"	"	K7	841908.5	817884.8	1.904E-01	9.871E-03	5.00	5.12	4.65		
	"	"	"	K8	841917.7	817890.9	1.904E-01	9.871E-03	5.00	5.12	4.65		
	"	"	"	K9	841926.9	817896.9	1.904E-01	9.871E-03	5.00	5.12	4.65		
	"	"	"	K10	841936.0	817903.0	1.904E-01	9.871E-03	5.00	5.12	4.65	2.856E+00	1.481E-01

Ventilation Buildings	Source ID	X	Y	Base Height (m)	Daily Emission Factor		Height (m)	HS	TS	VS	DS
					NOx	RSP					
Eastern T2 Ventilation Building Stack 1 (90% from VB)	V1	841795.8	818040.5	0	1.083E+01	5.713E-01	13.0	13.0	303.0	8.0	5.6
Eastern T2 Ventilation Building Stack 2 (90% from VB)	V2	841795.8	818024.7	0	1.083E+01	5.713E-01	13.0	13.0	303.0	8.0	5.6
TKO-LTT (westbound) (60% from VB)	V3	842147.5	818226.4	0	5.679E+00	2.998E-01	8.0	8.0	313.0	6.0	9.1
Eastern Harbour Crossing Ventilation Building (70% from VB)	V4	841695.1	817747.9	5.5	6.663E+00	3.455E-01	17.0	17.0	298.0	2.1	9.0

Calculation of Portal Emission and Emissions of Ventilation Buildings (LT)

Hourly Profile for Portals

Hour	Link 179 to Link 182 (southbound)		Link 189 (T2 eastbound Slip Road)		Link 190 & Link 226		Link 191		Link 192		Link 195 (T2 eastbound)	
	NOx	RSP	NOx	RSP	NOx	RSP	NOx	RSP	NOx	RSP	NOx	RSP
Hour 1	2.2%	2.0%	2.9%	2.6%	1.6%	1.2%	2.0%	1.4%	1.6%	1.2%	1.8%	1.5%
Hour 2	1.6%	1.4%	2.1%	1.8%	1.2%	0.9%	1.4%	1.0%	1.2%	0.9%	1.3%	1.1%
Hour 3	1.2%	1.1%	1.6%	1.4%	0.9%	0.7%	1.1%	0.8%	0.9%	0.7%	1.0%	0.9%
Hour 4	0.9%	0.8%	1.2%	1.0%	0.7%	0.5%	0.8%	0.6%	0.7%	0.5%	0.8%	0.6%
Hour 5	0.8%	0.7%	1.1%	0.9%	0.6%	0.5%	0.8%	0.5%	0.6%	0.5%	0.7%	0.6%
Hour 6	1.2%	1.4%	0.8%	0.9%	1.6%	1.8%	1.4%	1.7%	1.6%	1.8%	1.5%	1.7%
Hour 7	2.8%	3.1%	1.8%	2.0%	3.6%	4.1%	3.2%	3.8%	3.6%	4.1%	3.3%	3.6%
Hour 8	7.3%	8.0%	4.9%	5.3%	9.7%	10.9%	8.5%	10.1%	9.7%	10.9%	8.5%	9.4%
Hour 9	7.1%	6.9%	4.5%	4.6%	8.6%	9.0%	7.0%	7.4%	8.6%	9.0%	8.5%	8.6%
Hour 10	6.2%	5.8%	4.0%	3.8%	7.7%	7.3%	6.4%	5.8%	7.7%	7.3%	7.5%	7.3%
Hour 11	5.0%	4.4%	3.1%	2.8%	5.9%	5.3%	4.7%	4.0%	5.9%	5.3%	6.1%	5.8%
Hour 12	4.4%	4.2%	2.9%	2.6%	5.5%	5.0%	4.4%	3.8%	5.4%	5.0%	5.5%	5.3%
Hour 13	4.6%	4.9%	3.0%	3.2%	5.9%	6.3%	5.0%	5.5%	5.9%	6.3%	5.6%	6.0%
Hour 14	4.9%	5.0%	3.2%	3.3%	6.2%	6.5%	5.3%	5.7%	6.2%	6.5%	5.9%	6.2%
Hour 15	4.7%	4.8%	3.0%	3.1%	5.8%	6.0%	4.8%	5.1%	5.8%	6.0%	5.7%	5.8%
Hour 16	5.2%	5.5%	7.1%	7.5%	4.0%	4.2%	5.0%	5.3%	4.1%	4.2%	4.3%	4.5%
Hour 17	6.2%	6.8%	8.3%	9.0%	5.2%	5.9%	6.8%	8.1%	5.2%	5.9%	5.0%	5.6%
Hour 18	6.4%	6.9%	8.8%	9.5%	5.1%	5.6%	6.5%	7.3%	5.2%	5.6%	5.2%	5.6%
Hour 19	6.4%	6.8%	8.7%	9.3%	4.9%	5.3%	6.1%	6.7%	5.0%	5.3%	5.2%	5.3%
Hour 20	5.2%	5.0%	6.5%	6.6%	3.7%	3.8%	4.7%	4.8%	3.8%	3.8%	4.0%	3.8%
Hour 21	3.9%	3.8%	5.0%	4.9%	2.7%	2.5%	3.3%	2.9%	2.8%	2.5%	3.1%	2.8%
Hour 22	4.2%	3.7%	5.4%	5.0%	3.0%	2.4%	3.7%	2.7%	3.0%	2.4%	3.3%	2.9%
Hour 23	4.2%	3.7%	5.4%	4.9%	3.0%	2.4%	3.8%	2.6%	3.1%	2.4%	3.3%	2.8%
Hour 24	3.5%	3.1%	4.6%	4.1%	2.6%	2.0%	3.2%	2.2%	2.6%	2.0%	2.8%	2.4%

Hour	Link 198 (TKO-LTT westbound)		Link 225		Link 245 (TKO-LTT westbound slip road)		Eastern Harbour Crossing	
	NOx	RSP	NOx	RSP	NOx	RSP	NOx	RSP
Hour 1	2.4%	2.1%	2.7%	2.1%	1.7%	1.3%	2.4%	1.9%
Hour 2	1.7%	1.5%	1.9%	1.5%	1.2%	1.0%	1.7%	1.4%
Hour 3	1.4%	1.2%	1.5%	1.1%	1.0%	0.8%	1.4%	1.1%
Hour 4	1.0%	0.9%	1.1%	0.8%	0.7%	0.6%	1.0%	0.8%
Hour 5	0.9%	0.8%	1.0%	0.8%	0.6%	0.5%	0.9%	0.7%
Hour 6	1.2%	1.3%	1.0%	1.2%	1.8%	2.3%	1.2%	1.6%
Hour 7	2.5%	2.8%	2.2%	2.6%	3.9%	5.0%	2.7%	3.4%
Hour 8	6.6%	7.3%	5.9%	6.9%	10.1%	13.0%	7.1%	8.8%
Hour 9	6.5%	6.7%	4.8%	5.0%	8.2%	8.1%	6.2%	6.0%
Hour 10	5.8%	5.6%	4.4%	3.9%	7.8%	6.6%	5.7%	5.0%
Hour 11	4.7%	4.5%	3.3%	2.7%	5.8%	4.1%	4.4%	3.4%
Hour 12	4.2%	4.1%	3.0%	2.6%	5.4%	4.2%	4.0%	3.4%
Hour 13	4.3%	4.7%	3.5%	3.8%	6.1%	7.1%	4.3%	5.1%
Hour 14	4.5%	4.8%	3.6%	3.9%	6.4%	7.2%	4.6%	5.1%
Hour 15	4.4%	4.5%	3.3%	3.4%	5.8%	6.0%	4.2%	4.5%
Hour 16	5.7%	5.9%	6.6%	7.2%	4.0%	4.1%	5.6%	6.0%
Hour 17	6.4%	7.0%	8.6%	10.1%	4.7%	5.2%	7.0%	8.3%
Hour 18	6.8%	7.2%	8.5%	9.6%	4.8%	5.1%	7.0%	7.6%
Hour 19	6.9%	7.0%	8.1%	9.0%	4.8%	4.8%	6.8%	7.2%
Hour 20	5.2%	5.0%	6.2%	6.4%	3.7%	3.5%	5.4%	5.3%
Hour 21	4.2%	3.8%	4.5%	4.2%	2.9%	2.5%	4.0%	3.6%
Hour 22	4.4%	4.0%	5.0%	4.0%	3.1%	2.5%	4.4%	3.5%
Hour 23	4.4%	3.9%	5.0%	4.0%	3.1%	2.4%	4.4%	3.4%
Hour 24	3.7%	3.3%	4.2%	3.4%	2.6%	2.1%	3.7%	2.9%

Calculation of Portal Emission and Emissions of Ventilation Buildings (LT)

Hourly Profile for Ventilation Buildings

Hour	V1		V2		V3		V4	
	NOx	RSP	NOx	RSP	NOx	RSP	NOx	RSP
Hour 1	2.2%	1.9%	2.2%	1.9%	2.2%	1.9%	2.4%	1.9%
Hour 2	1.6%	1.4%	1.6%	1.4%	1.6%	1.4%	1.7%	1.4%
Hour 3	1.3%	1.1%	1.3%	1.1%	1.3%	1.1%	1.4%	1.1%
Hour 4	0.9%	0.8%	0.9%	0.8%	0.9%	0.8%	1.0%	0.8%
Hour 5	0.8%	0.7%	0.8%	0.7%	0.8%	0.7%	0.9%	0.7%
Hour 6	1.3%	1.4%	1.3%	1.4%	1.3%	1.6%	1.2%	1.6%
Hour 7	2.8%	3.1%	2.8%	3.1%	2.9%	3.4%	2.7%	3.4%
Hour 8	7.3%	8.2%	7.3%	8.2%	7.6%	9.0%	7.1%	8.8%
Hour 9	7.1%	7.2%	7.1%	7.2%	7.0%	7.1%	6.2%	6.0%
Hour 10	6.3%	6.0%	6.3%	6.0%	6.4%	5.9%	5.7%	5.0%
Hour 11	5.1%	4.7%	5.1%	4.7%	5.0%	4.4%	4.4%	3.4%
Hour 12	4.6%	4.3%	4.6%	4.3%	4.6%	4.1%	4.0%	3.4%
Hour 13	4.7%	5.1%	4.7%	5.1%	4.8%	5.4%	4.3%	5.1%
Hour 14	4.9%	5.2%	4.9%	5.2%	5.1%	5.5%	4.6%	5.1%
Hour 15	4.8%	4.9%	4.8%	4.9%	4.8%	5.0%	4.2%	4.5%
Hour 16	5.3%	5.5%	5.3%	5.5%	5.2%	5.4%	5.6%	6.0%
Hour 17	6.1%	6.8%	6.1%	6.8%	5.9%	6.5%	7.0%	8.3%
Hour 18	6.4%	6.9%	6.4%	6.9%	6.3%	6.6%	7.0%	7.6%
Hour 19	6.4%	6.6%	6.4%	6.6%	6.3%	6.3%	6.8%	7.2%
Hour 20	4.8%	4.7%	4.8%	4.7%	4.8%	4.5%	5.4%	5.3%
Hour 21	3.8%	3.5%	3.8%	3.5%	3.8%	3.4%	4.0%	3.6%
Hour 22	4.1%	3.6%	4.1%	3.6%	4.0%	3.6%	4.4%	3.5%
Hour 23	4.0%	3.5%	4.0%	3.5%	4.0%	3.5%	4.4%	3.4%
Hour 24	3.5%	3.0%	3.5%	3.0%	3.4%	3.0%	3.7%	2.9%

Calculation of Portal Emission and Emissions of Ventilation Buildings (TKO)

Portal Name	Description	Percentage from Portal	Length (m)	Portal ID	Source ID	Hour	Q (veh/hr)	Total E.F. (portal + VB)		Total emission rate (portal + VB)		Emission rate (from portal)		Emission rate (from Vent Bldg.)	
								NOX E.F. (g/mile-veh)	RSP E.F. (g/mile-veh)	NO _x (g/s)	RSP (g/s)	NOX (g/s)	RSP (g/s)	NOX (g/s)	RSP (g/s)
A	P2 (northbound)	100%	200	A1 - A8	P2-5	1	402	0.4583	0.0162	6.366E-03	2.246E-04	4.941E-03	1.788E-04	-	-
						2	294	0.4590	0.0162	4.659E-03	1.642E-04	3.598E-03	1.294E-04	-	-
						3	232	0.4605	0.0162	3.690E-03	1.296E-04	2.842E-03	1.018E-04	-	-
						4	170	0.4618	0.0162	2.714E-03	9.504E-05	2.086E-03	7.426E-05	-	-
						5	155	0.4630	0.0162	2.473E-03	8.640E-05	1.901E-03	6.801E-05	-	-
						6	175	0.4535	0.0260	2.737E-03	1.572E-04	2.972E-03	1.653E-04	-	-
						7	379	0.4520	0.0260	5.912E-03	3.405E-04	6.561E-03	3.645E-04	-	-
						8	991	0.4519	0.0260	1.546E-02	8.908E-04	1.730E-02	9.613E-04	-	-
						9	1078	0.4513	0.0225	1.680E-02	8.378E-04	1.870E-02	9.498E-04	-	-
						10	962	0.4779	0.0213	1.587E-02	7.066E-04	1.735E-02	7.827E-04	-	-
						11	816	0.4572	0.0189	1.288E-02	5.315E-04	1.400E-02	5.991E-04	-	-
						12	729	0.4610	0.0199	1.159E-02	5.006E-04	1.264E-02	5.567E-04	-	-
						13	670	0.4314	0.0230	9.983E-03	5.331E-04	1.099E-02	5.694E-04	-	-
						14	714	0.4528	0.0239	1.116E-02	5.899E-04	1.229E-02	6.299E-04	-	-
						15	743	0.4128	0.0208	1.059E-02	5.341E-04	1.170E-02	5.846E-04	-	-
						16	820	0.4338	0.0215	1.228E-02	6.084E-04	9.753E-03	4.780E-04	-	-
						17	898	0.4291	0.0234	1.330E-02	7.246E-04	1.058E-02	5.582E-04	-	-
						18	990	0.4319	0.0225	1.477E-02	7.681E-04	1.181E-02	6.071E-04	-	-
						19	1083	0.4132	0.0209	1.545E-02	7.801E-04	1.232E-02	6.231E-04	-	-
						20	929	0.3789	0.0177	1.214E-02	5.686E-04	9.581E-03	4.504E-04	-	-
						21	743	0.3958	0.0164	1.015E-02	4.206E-04	7.964E-03	3.392E-04	-	-
						22	727	0.4649	0.0172	1.167E-02	4.310E-04	9.145E-03	3.471E-04	-	-
						23	743	0.4572	0.0162	1.172E-02	4.147E-04	9.190E-03	3.360E-04	-	-
						24	634	0.4574	0.0162	1.002E-02	3.543E-04	7.825E-03	2.858E-04	-	-
												Daily	-	-	-
B	P2 (southbound)	100%	200	B1 - B8	P2-6	1	193	0.5273	0.0200	3.515E-03	1.330E-04	4.941E-03	1.788E-04	-	-
						2	141	0.5207	0.0194	2.537E-03	9.469E-05	3.598E-03	1.294E-04	-	-
						3	111	0.5182	0.0193	1.993E-03	7.404E-05	2.842E-03	1.018E-04	-	-
						4	82	0.5170	0.0190	1.458E-03	5.348E-05	2.086E-03	7.426E-05	-	-
						5	74	0.5185	0.0194	1.330E-03	4.962E-05	1.901E-03	6.801E-05	-	-
						6	166	0.5587	0.0302	3.207E-03	1.734E-04	2.972E-03	1.653E-04	-	-
						7	360	0.5797	0.0312	7.209E-03	3.885E-04	6.561E-03	3.645E-04	-	-
						8	942	0.5887	0.0317	1.915E-02	1.032E-03	1.730E-02	9.613E-04	-	-
						9	1025	0.5823	0.0300	2.061E-02	1.062E-03	1.870E-02	9.498E-04	-	-
						10	914	0.5970	0.0272	1.884E-02	8.588E-04	1.735E-02	7.827E-04	-	-
						11	776	0.5642	0.0249	1.511E-02	6.667E-04	1.400E-02	5.991E-04	-	-
						12	693	0.5724	0.0256	1.369E-02	6.129E-04	1.264E-02	5.567E-04	-	-
						13	637	0.5453	0.0275	1.200E-02	6.056E-04	1.099E-02	5.694E-04	-	-
						14	679	0.5722	0.0286	1.341E-02	6.699E-04	1.229E-02	6.299E-04	-	-
						15	707	0.5251	0.0260	1.281E-02	6.351E-04	1.170E-02	5.846E-04	-	-
						16	394	0.5314	0.0256	7.223E-03	3.476E-04	9.753E-03	4.780E-04	-	-
						17	431	0.5290	0.0263	7.868E-03	3.917E-04	1.058E-02	5.582E-04	-	-
						18	475	0.5399	0.0272	8.860E-03	4.461E-04	1.181E-02	6.071E-04	-	-
						19	520	0.5118	0.0260	9.187E-03	4.661E-04	1.232E-02	6.231E-04	-	-
						20	446	0.4561	0.0216	7.018E-03	3.322E-04	9.581E-03	4.504E-04	-	-
						21	357	0.4695	0.0209	5.779E-03	2.578E-04	7.964E-03	3.392E-04	-	-
						22	349	0.5490	0.0218	6.616E-03	2.633E-04	9.145E-03	3.471E-04	-	-
						23	357	0.5407	0.0209	6.655E-03	2.573E-04	9.190E-03	3.360E-04	-	-
						24	305	0.5356	0.0207	5.631E-03	2.174E-04	7.825E-03	2.858E-04	-	-
												Daily	-	-	-

Calculation of Portal Emission and Emissions of Ventilation Buildings (TKO)

Portal Name	Description	Percentage from Portal	Length (m)	Portal ID	Source ID	Hour	Q (veh/hr)	Total E.F. (portal + VB)		Total emission rate (portal + VB)		Emission rate (from portal)		Emission rate (from Vent Bldg.)	
								NOX E.F. (g/mile-veh)	RSP E.F. (g/mile-veh)	NO _x (g/s)	RSP (g/s)	NOX (g/s)	RSP (g/s)	NOX (g/s)	RSP (g/s)
C	TKO-LLT (eastbound)	40%	2200	C1 - C14	CBL3	1	915	0.6152	0.0252	2.137E-01	8.770E-03	8.547E-02	3.508E-03	1.282E-01	5.262E-03
						2	668	0.6159	0.0252	1.563E-01	6.409E-03	6.254E-02	2.563E-03	9.381E-02	3.845E-03
						3	528	0.6177	0.0252	1.238E-01	5.060E-03	4.952E-02	2.024E-03	7.427E-02	3.036E-03
						4	387	0.6192	0.0252	9.100E-02	3.710E-03	3.640E-02	1.484E-03	5.460E-02	2.226E-03
						5	352	0.6207	0.0252	8.292E-02	3.373E-03	3.317E-02	1.349E-03	4.975E-02	2.024E-03
						6	363	0.8318	0.0512	1.148E-01	7.062E-03	4.591E-02	2.825E-03	6.886E-02	4.237E-03
						7	787	0.8292	0.0512	2.479E-01	1.530E-02	9.916E-02	6.121E-03	1.487E-01	9.181E-03
						8	2059	0.8288	0.0512	6.480E-01	4.002E-02	2.592E-01	1.601E-02	3.888E-01	2.401E-02
						9	2241	0.7127	0.0379	6.064E-01	3.226E-02	2.426E-01	1.290E-02	3.638E-01	1.935E-02
						10	1998	0.7213	0.0358	5.474E-01	2.713E-02	2.190E-01	1.085E-02	3.284E-01	1.628E-02
						11	1696	0.6747	0.0314	4.345E-01	2.021E-02	1.738E-01	8.083E-03	2.607E-01	1.212E-02
						12	1514	0.6861	0.0330	3.944E-01	1.895E-02	1.578E-01	7.579E-03	2.367E-01	1.137E-02
						13	1393	0.7852	0.0457	4.153E-01	2.416E-02	1.661E-01	9.664E-03	2.492E-01	1.450E-02
						14	1484	0.7724	0.0440	4.352E-01	2.482E-02	1.741E-01	9.926E-03	2.611E-01	1.489E-02
						15	1544	0.7066	0.0385	4.144E-01	2.257E-02	1.657E-01	9.030E-03	2.486E-01	1.354E-02
						16	1865	0.7216	0.0400	5.110E-01	2.833E-02	2.044E-01	1.133E-02	3.066E-01	1.700E-02
						17	2041	0.7919	0.0489	6.136E-01	3.790E-02	2.454E-01	1.516E-02	3.682E-01	2.274E-02
						18	2252	0.7282	0.0420	6.227E-01	3.587E-02	2.491E-01	1.435E-02	3.736E-01	2.152E-02
						19	2463	0.6530	0.0357	6.107E-01	3.334E-02	2.443E-01	1.334E-02	3.664E-01	2.001E-02
						20	2111	0.5884	0.0301	4.717E-01	2.410E-02	1.887E-01	9.642E-03	2.830E-01	1.446E-02
						21	1689	0.5641	0.0258	3.617E-01	1.653E-02	1.447E-01	6.611E-03	2.170E-01	9.916E-03
						22	1654	0.6243	0.0265	3.920E-01	1.662E-02	1.568E-01	6.646E-03	2.352E-01	9.969E-03
						23	1689	0.6138	0.0252	3.936E-01	1.619E-02	1.574E-01	6.476E-03	2.362E-01	9.714E-03
						24	1442	0.6140	0.0252	3.363E-01	1.383E-02	1.345E-01	5.532E-03	2.018E-01	8.298E-03
Daily						-	-	-	-	9.239E+00	4.825E-01	3.696E+00	1.930E-01	5.543E+00	2.895E-01

Calculation of Portal Emission and Emissions of Ventilation Buildings (TKO)

Road ID	Source ID	X	Y	Base Height (m)	Daily Emission Factor (QS) (g/s)		Height (m)	Width (m)	HS	SY	SZ
					NOx	RSP					
P2 (northbound)	A1	844383.9	818105.4	0	3.801E-02	1.790E-03	6.3	12.5	3.15	5.81	2.93
	A2	844384.1	818117.9	0	3.801E-02	1.790E-03	6.3	12.5	3.15	5.81	2.93
	A3	844384.3	818130.4	0	3.801E-02	1.790E-03	6.3	12.5	3.15	5.81	2.93
	A4	844384.4	818142.9	0	3.801E-02	1.790E-03	6.3	12.5	3.15	5.81	2.93
	A5	844384.6	818155.4	0	1.900E-02	8.951E-04	6.3	12.5	3.15	5.81	2.93
	A6	844384.7	818167.9	0	1.900E-02	8.951E-04	6.3	12.5	3.15	5.81	2.93
	A7	844384.9	818180.5	0	1.900E-02	8.951E-04	6.3	12.5	3.15	5.81	2.93
	A8	844385.1	818193.0	0	1.900E-02	8.951E-04	6.3	12.5	3.15	5.81	2.93
P2 (southbound)	B1	844395.6	817891.9	0	3.041E-02	1.432E-03	7.5	9.0	3.75	4.19	3.49
	B2	844395.7	817881.9	0	3.041E-02	1.432E-03	7.5	9.0	3.75	4.19	3.49
	B3	844395.8	817871.9	0	3.041E-02	1.432E-03	7.5	9.0	3.75	4.19	3.49
	B4	844395.9	817861.9	0	3.041E-02	1.432E-03	7.5	9.0	3.75	4.19	3.49
	B5	844396.0	817851.9	0	3.041E-02	1.432E-03	7.5	9.0	3.75	4.19	3.49
	B6	844396.1	817841.9	0	1.520E-02	7.161E-04	7.5	9.0	3.75	4.19	3.49
	B7	844396.2	817831.9	0	1.520E-02	7.161E-04	7.5	9.0	3.75	4.19	3.49
	B8	844396.3	817821.9	0	1.520E-02	7.161E-04	7.5	9.0	3.75	4.19	3.49
	B9	844396.4	817811.9	0	1.520E-02	7.161E-04	7.5	9.0	3.75	4.19	3.49
	B10	844396.5	817801.9	0	1.520E-02	7.161E-04	7.5	9.0	3.75	4.19	3.49
TKO-LLT (eastbound)	C1	844085.8	817618.5	8	3.520E-01	1.838E-02	9.5	7.0	12.75	3.26	4.42
	C2	844091.1	817613.2	8	3.520E-01	1.838E-02	9.5	7.0	12.75	3.26	4.42
	C3	844096.4	817607.9	8	3.520E-01	1.838E-02	9.5	7.0	12.75	3.26	4.42
	C4	844101.8	817602.6	8	3.520E-01	1.838E-02	9.5	7.0	12.75	3.26	4.42
	C5	844107.1	817597.3	8	3.520E-01	1.838E-02	9.5	7.0	12.75	3.26	4.42
	C6	844112.4	817592.1	8	3.520E-01	1.838E-02	9.5	7.0	12.75	3.26	4.42
	C7	844117.7	817586.8	8	3.520E-01	1.838E-02	9.5	7.0	12.75	3.26	4.42
	C8	844123.0	817581.5	8	1.760E-01	9.191E-03	9.5	7.0	12.75	3.26	4.42
	C9	844128.3	817576.2	8	1.760E-01	9.191E-03	9.5	7.0	12.75	3.26	4.42
	C10	844133.6	817570.9	8	1.760E-01	9.191E-03	9.5	7.0	12.75	3.26	4.42
	C11	844138.9	817565.6	8	1.760E-01	9.191E-03	9.5	7.0	12.75	3.26	4.42
	C12	844144.3	817560.3	8	1.760E-01	9.191E-03	9.5	7.0	12.75	3.26	4.42
	C13	844149.6	817555.0	8	1.760E-01	9.191E-03	9.5	7.0	12.75	3.26	4.42
	C14	844154.9	817549.7	8	1.760E-01	9.191E-03	9.5	7.0	12.75	3.26	4.42

Ventilation Buildings	Source ID	X	Y	Base Height (m)	Daily Emission Factor (QS) (g/s)		Height (m)	HS	TS	VS	DS
					NOx	RSP					
TKO-LLT (eastbound)	V1	844081.5	817619.5	8	5.543E+00	2.895E-01	8.0	16.0	313.0	6.0	9.1

Hourly Profile for Portal and Ventilation Building

Hour	P2 (northbound) Portal		P2 (southbound) Portal		TKO-LLT (eastbound) Portal		TKO-LLT (eastbound) Ventilation Building	
	NOx	RSP	NOx	RSP	NOx	RSP	NOx	RSP
Hour 1	2.2%	1.7%	2.2%	1.7%	2.3%	1.8%	2.3%	1.8%
Hour 2	1.6%	1.2%	1.6%	1.2%	1.7%	1.3%	1.7%	1.3%
Hour 3	1.2%	0.9%	1.2%	0.9%	1.3%	1.0%	1.3%	1.0%
Hour 4	0.9%	0.7%	0.9%	0.7%	1.0%	0.8%	1.0%	0.8%
Hour 5	0.8%	0.6%	0.8%	0.6%	0.9%	0.7%	0.9%	0.7%
Hour 6	1.3%	1.5%	1.3%	1.5%	1.2%	1.5%	1.2%	1.5%
Hour 7	2.9%	3.4%	2.9%	3.4%	2.7%	3.2%	2.7%	3.2%
Hour 8	7.6%	9.0%	7.6%	9.0%	7.0%	8.3%	7.0%	8.3%
Hour 9	8.2%	8.8%	8.2%	8.8%	6.6%	6.7%	6.6%	6.7%
Hour 10	7.6%	7.3%	7.6%	7.3%	5.9%	5.6%	5.9%	5.6%
Hour 11	6.1%	5.6%	6.1%	5.6%	4.7%	4.2%	4.7%	4.2%
Hour 12	5.5%	5.2%	5.5%	5.2%	4.3%	3.9%	4.3%	3.9%
Hour 13	4.8%	5.3%	4.8%	5.3%	4.5%	5.0%	4.5%	5.0%
Hour 14	5.4%	5.9%	5.4%	5.9%	4.7%	5.1%	4.7%	5.1%
Hour 15	5.1%	5.4%	5.1%	5.4%	4.5%	4.7%	4.5%	4.7%
Hour 16	4.3%	4.5%	4.3%	4.5%	5.5%	5.9%	5.5%	5.9%
Hour 17	4.6%	5.2%	4.6%	5.2%	6.6%	7.9%	6.6%	7.9%
Hour 18	5.2%	5.7%	5.2%	5.7%	6.7%	7.4%	6.7%	7.4%
Hour 19	5.4%	5.8%	5.4%	5.8%	6.6%	6.9%	6.6%	6.9%
Hour 20	4.2%	4.2%	4.2%	4.2%	5.1%	5.0%	5.1%	5.0%
Hour 21	3.5%	3.2%	3.5%	3.2%	3.9%	3.4%	3.9%	3.4%
Hour 22	4.0%	3.2%	4.0%	3.2%	4.2%	3.4%	4.2%	3.4%
Hour 23	4.0%	3.1%	4.0%	3.1%	4.3%	3.4%	4.3%	3.4%
Hour 24	3.4%	2.7%	3.4%	2.7%	3.6%	2.9%	3.6%	2.9%