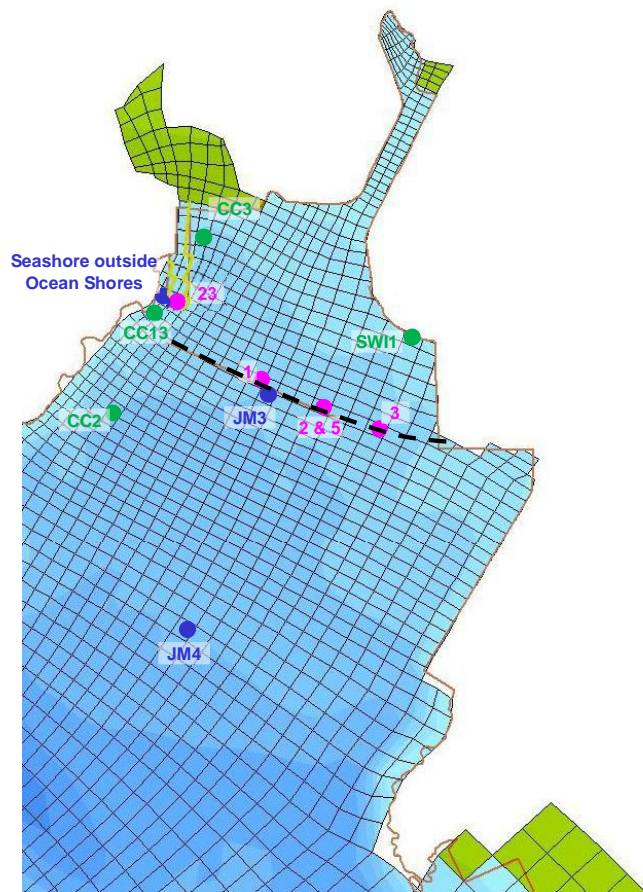
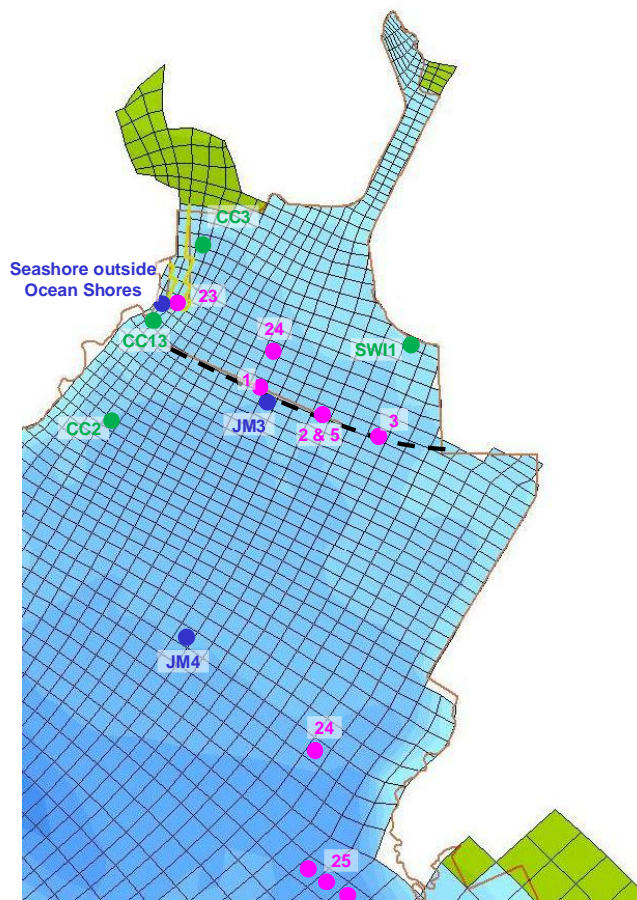


# Scenario 1a



# Scenario 1c



## Legend

- Major Water Sensitive Receivers
- Locations for Hydrodynamic Impact Comparison
- Sediment Release Points
  - 1 – CBL Dredging (0.06 kg/s)
  - 2 – CBL Dredging (0.06 kg/s)
  - 3 – CBL Dredging (0.06 kg/s)
  - 5 – CBL Filling (0.2 kg/s/trip)
  - 23 – LTT Reclamation (0.11 kg/s/trip)
  - 24 – Wind Farm Dredging (0.455 kg/s)
  - 25 – Wind Farm Jetting (18.43 kg/s)

### Note:

[1] Sources outside Junk Bay (e.g. T2, CT) are considered far away from site and note shown in the figures

[2] Dredging locations based on pier location (CBL), previous EIA (Wind Farm) and information from other project team (LTT)



土木工程拓展署  
Civil Engineering and  
Development Department

Job Title

Agreement No. CE 42/2008 (CE)  
Tseung Kwan O – Lam Tin Tunnel  
and Associated Works – Investigation

Drawing Title

Model Setup

Drawn	AN	Date	Mar 2011
Checked	KL	Approved	ST
Rev.	A	First Issue	9/09
		Description	Date

Scale

Drawing No.

Appendix 5.9

Status: Preliminary Rev. A