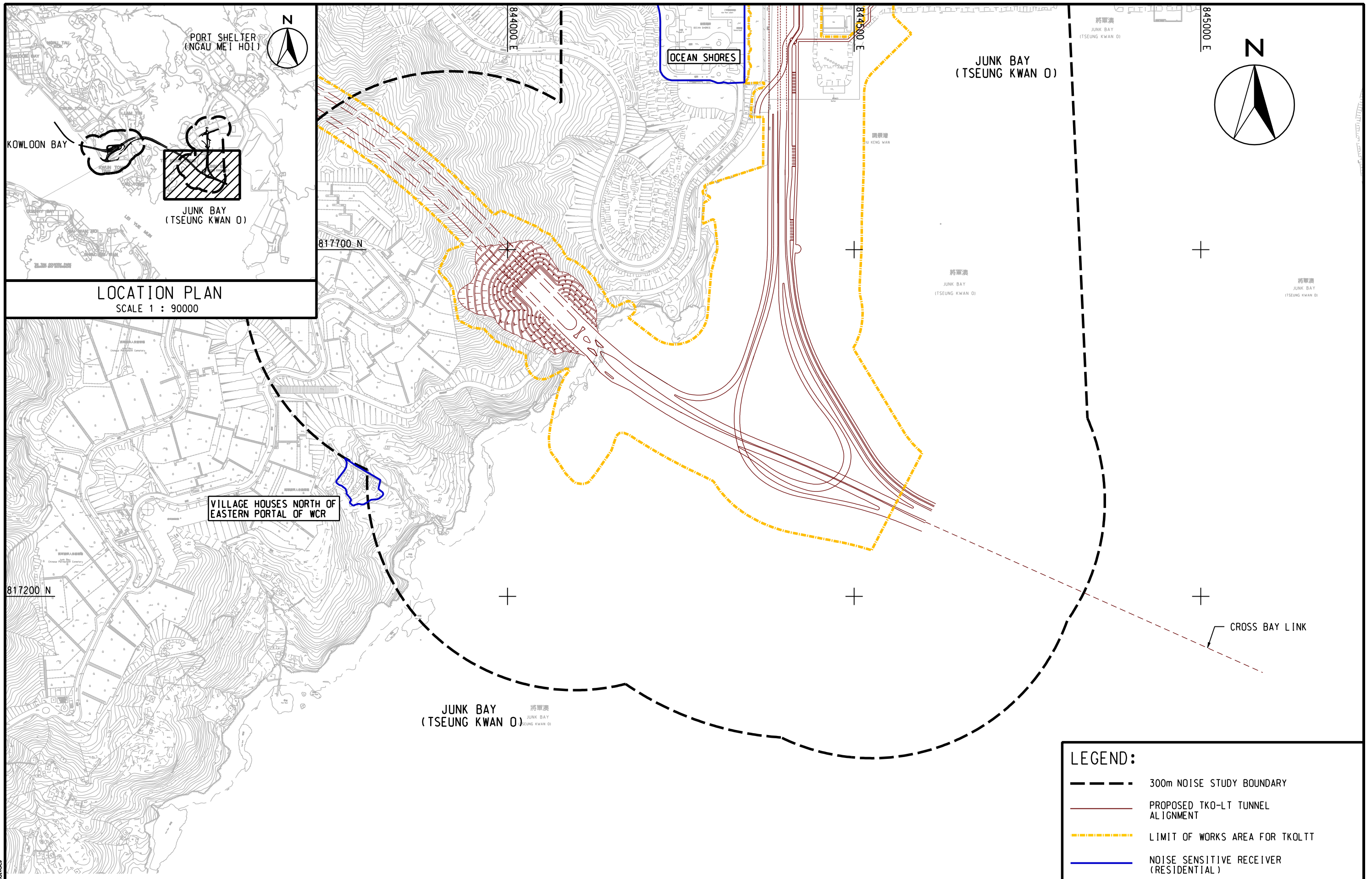


LEGEND:

- 300m NOISE STUDY BOUNDARY
- - - - - LIMIT OF WORKS AREA FOR TKO-LT
- PROPOSED TKO-LT TUNNEL ALIGNMENT
- NOISE SENSITIVE RECEIVER (RESIDENTIAL)

	AGREEMENT NO. CE 42/2008 (CE) TSEUNG KWAN O - LAM TIN TUNNEL AND ASSOCIATED WORKS - INVESTIGATION				SCALE	A3 1 : 3000	DATE	NOV. 2012
	LOCATIONS OF NOISE SENSITIVE RECEIVERS				CHECK	--	DRAWN	HLL
	SHEET 2 OF 4				JOB No.	60097677	DRAWING No.	FIGURE 4.1
							REV	--



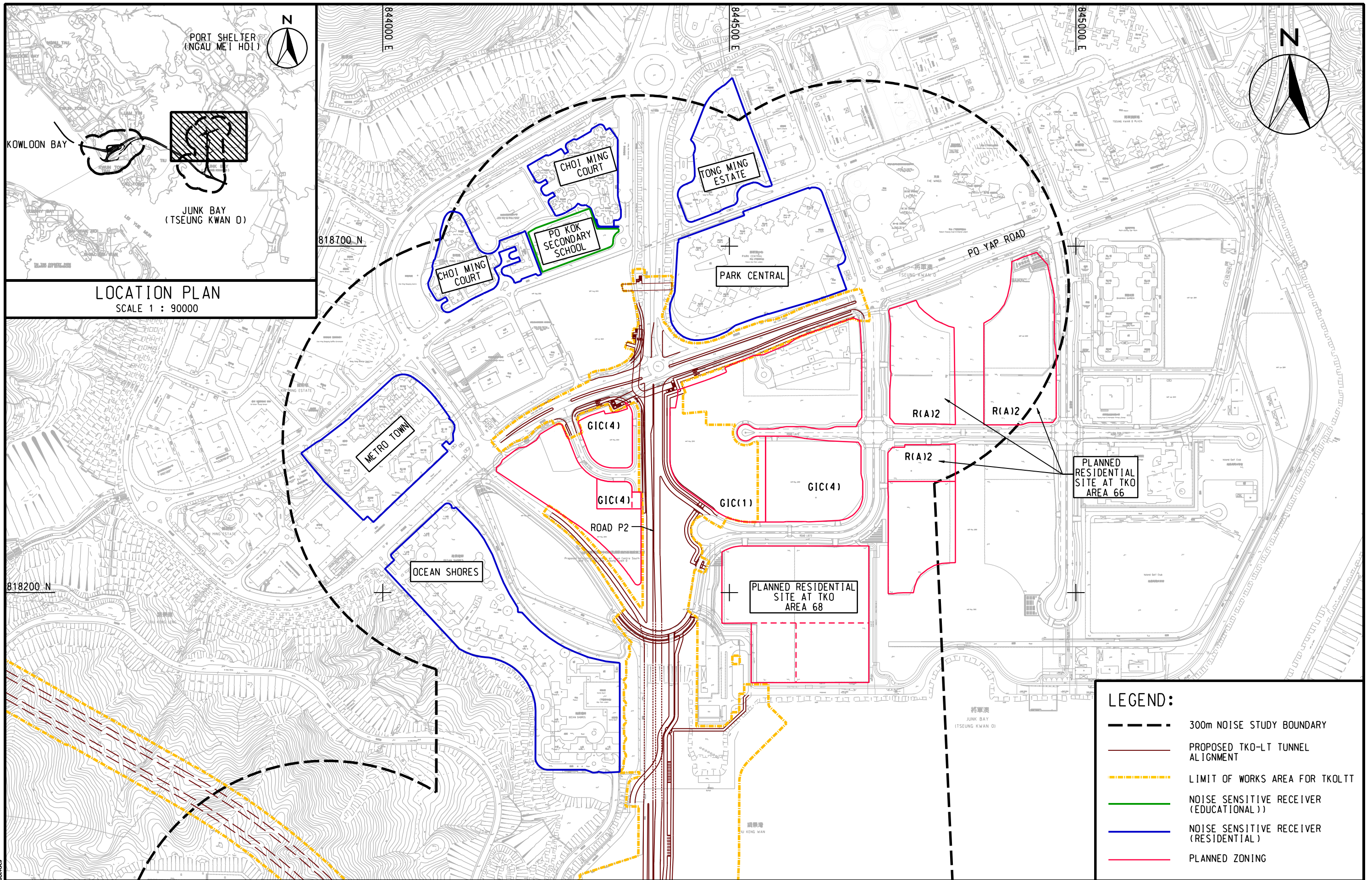
AECOM

AGREEMENT NO. CE 42/2008 (CE)
TSEUNG KWAN O - LAM TIN TUNNEL AND ASSOCIATED WORKS - INVESTIGATION

LOCATIONS OF NOISE SENSITIVE RECEIVERS

SHEET 3 OF 4

SCALE	A3 1 : 5000	DATE	JAN. 2013
CHECK	--	DRAWN	HLLS
JOB No.	60097677	DRAWING No.	FIGURE 4.1
		REV	--



AECOM

AGREEMENT NO. CE 42/2008 (CE)
TSEUNG KWAN O - LAM TIN TUNNEL AND ASSOCIATED WORKS - INVESTIGATION

LOCATIONS OF NOISE SENSITIVE RECEIVERS

SHEET 4 OF 4

SCALE	A3 1 : 5000	DATE	JAN. 2013
CHECK	---	DRAWN	HLLS
JOB No.	60097677	DRAWING No.	FIGURE 4.1
		REV	---