

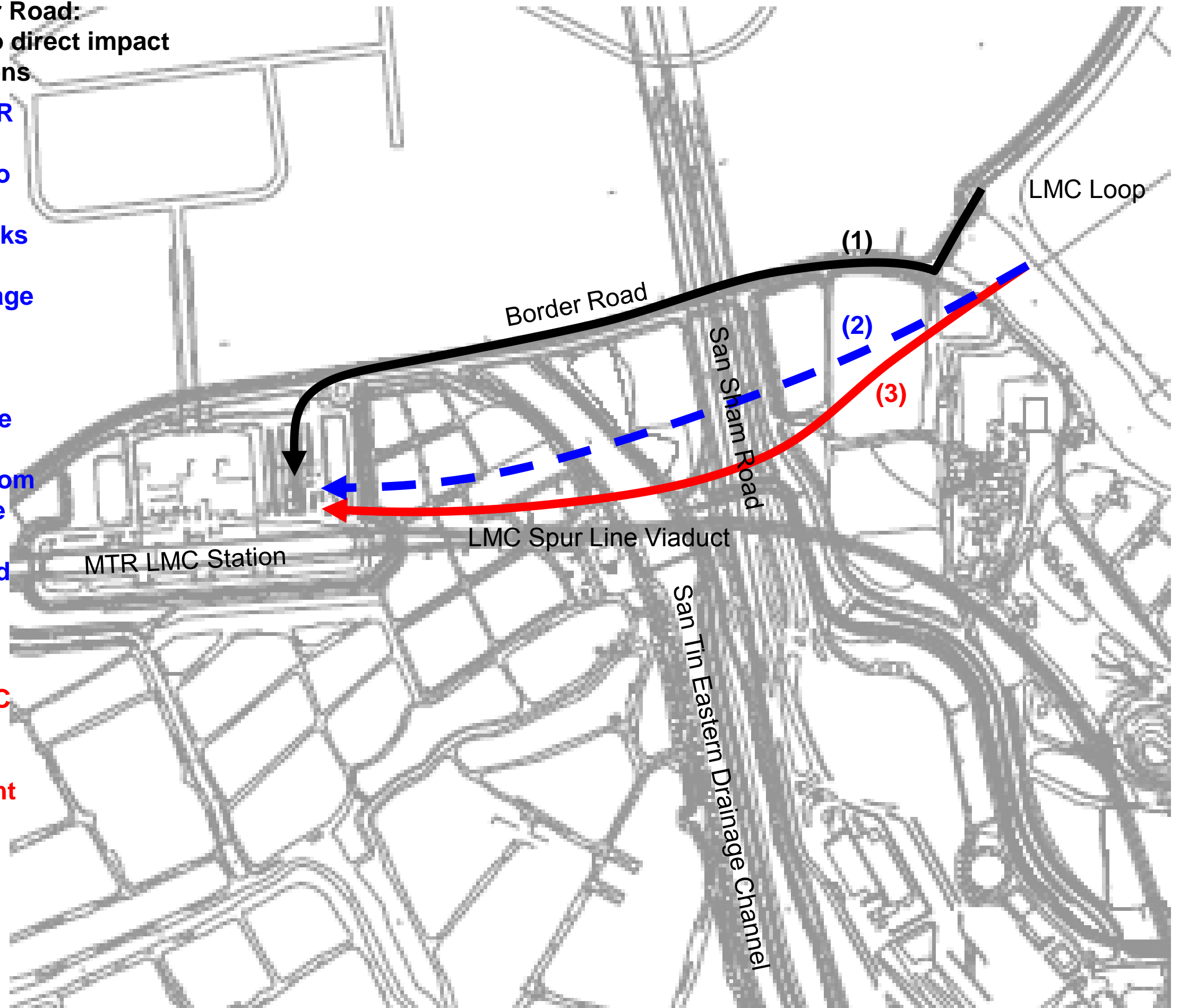
- (1) At-grade alignment along Border Road:**
- Avoid encroaching wetlands → No direct impact
 - Not selected due to security reasons

(2) Tunneling from LMC Loop to MTR LMC Station:

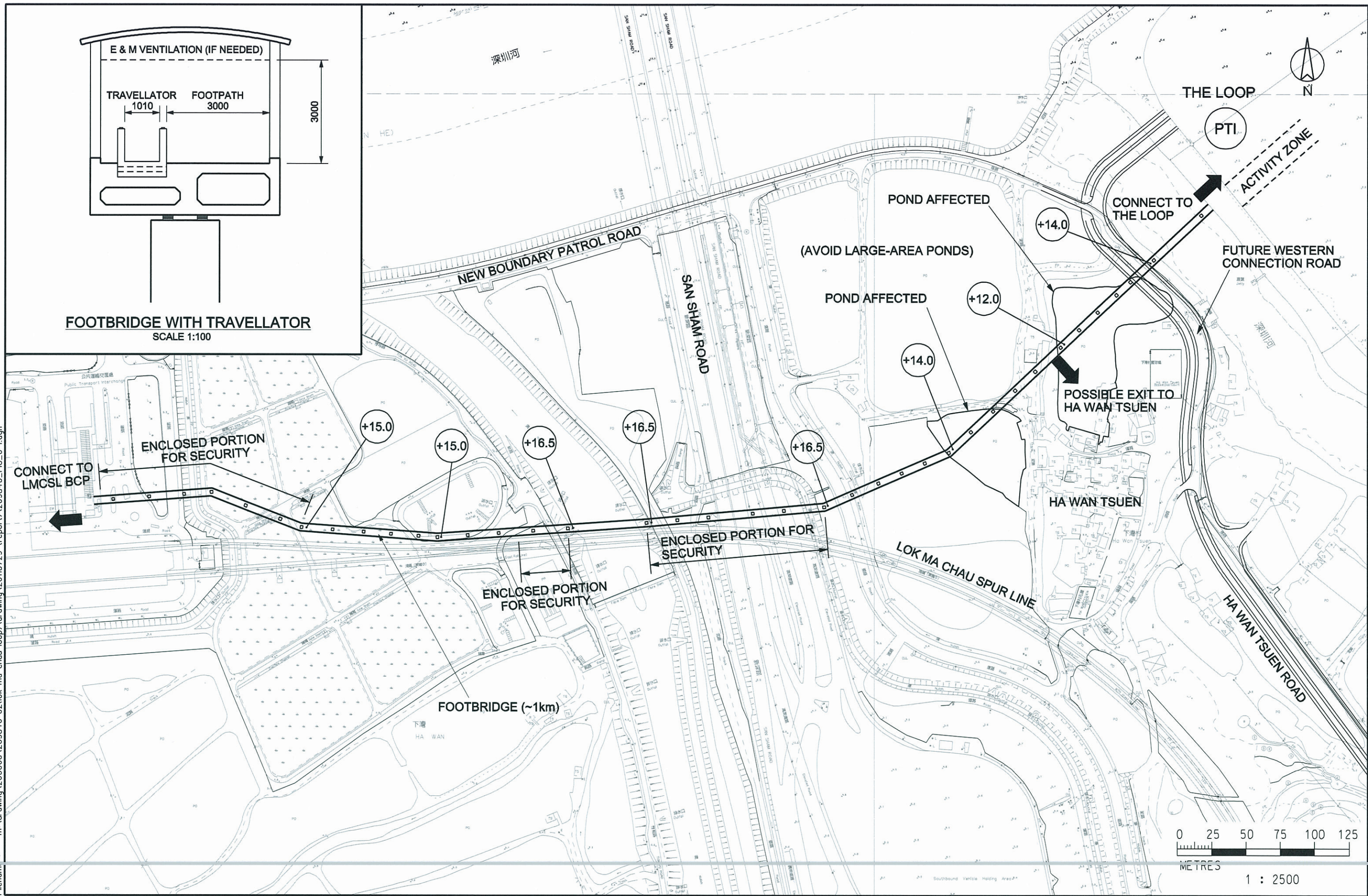
- Avoid encroaching wetlands → No permanent direct impact
- Require lots of cut-and-cover works which will induce higher construction impact and the sewage polishing wetlands will be highly affected
- Open-cut across San Tin Eastern Drainage Channel affects drainage flow during construction stage
- Too steep gradient for climbing from beneath San Tin Eastern Drainage Channel to Elevated PTI
- Open-cut beneath San Sham Road requires underpinning of bridge foundation
- Not considered as feasible option

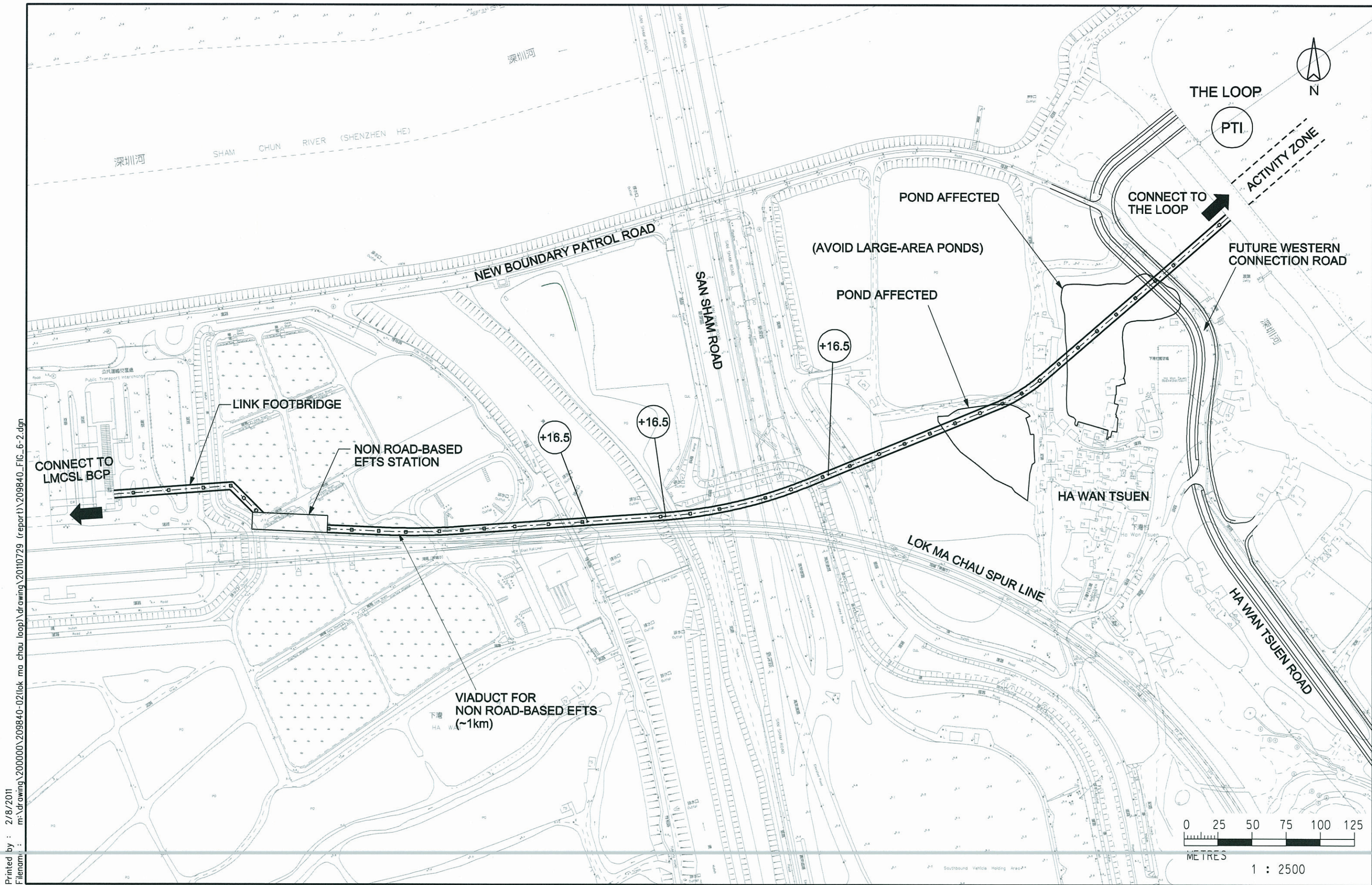
(3) Viaduct alignment align with LMC Spur Line Viaduct:

- Direct impact to wetlands
- Lesser disturbance impact to flight paths
- Preferred alignment



Printed by : 2/8/2011
 File name : m:\drawing\2000000\209840-02\lok ma chau loop\drawing_20110729 (report)\209840_FIG_6-1.dgn





Printed by : 2/8/2011
 File name : m:\drawing\200000\209840-02\lok ma chau loop\drawing\20110729 (repair)\209840_FIG_6-2.dgn



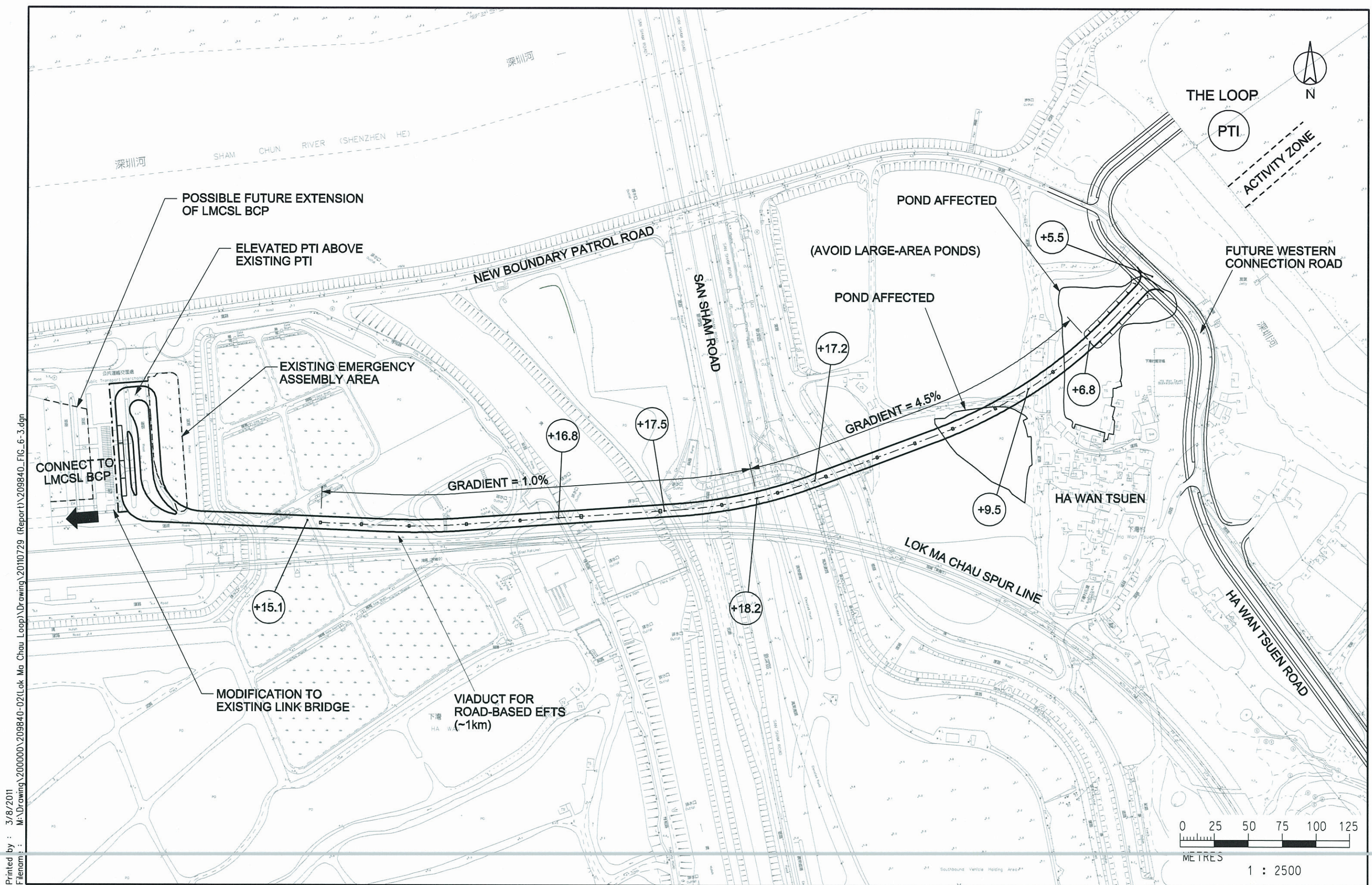
研究项目 Job Title
 合约编号 Agreement No. CE 53/2008 (CE)
 落马洲河套地区发展规划及工程研究 - 勘查研究
 Planning and Engineering Study on
 Development of Lok Ma Chau Loop - Investigation

图则项目 Title
**DIRECT CONNECTION TO LMCSL STATION -
 NON ROAD-BASED EFTS LINKAGE OPTION**

图则编号 Figure No.

6.2

图例 Scale 1:2500 ON A3
 修订编号 Rev.



Printed by : 3/8/2011
 File name : M:\Drawing\200000\209840-02(Lok Ma Chau Loop)\Drawing\2010729 (Report)\209840_FIG_6-3.dgn

<p>土木工程拓展署 CIVIL ENGINEERING AND DEVELOPMENT DEPARTMENT</p>	<p>规划署 PLANNING DEPARTMENT</p>

研究项目 Job Title
 合约编号 Agreement No. CE 53/2008 (CE)
 落马洲河套地区发展规划及工程研究 - 勘察研究
 Planning and Engineering Study on
 Development of Lok Ma Chau Loop - Investigation

图则项目 Title
**DIRECT CONNECTION TO LMCSL STATION -
 ROAD-BASED EFTS LINKAGE OPTION**

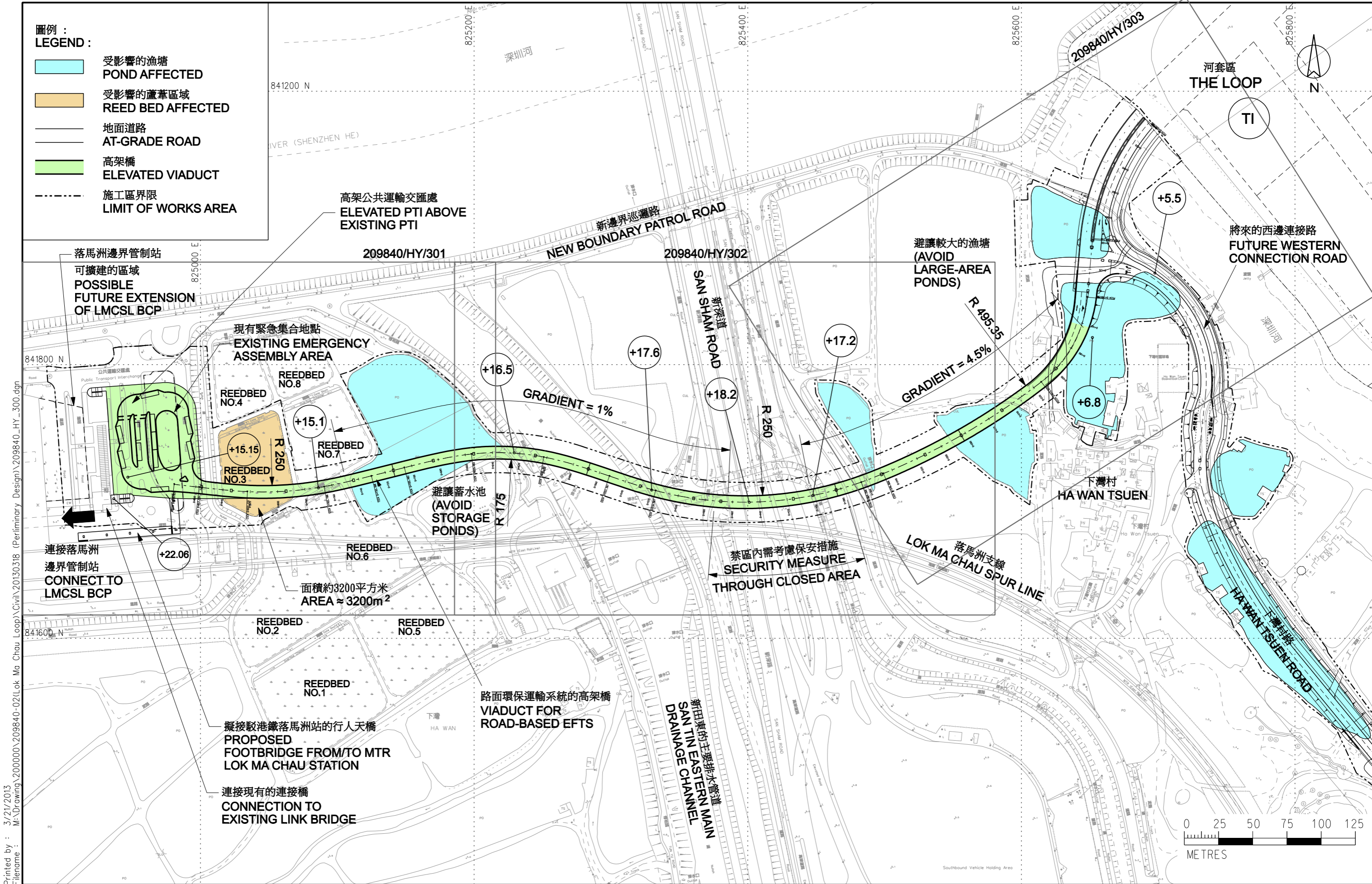
图则编号 Figure No.
6.3

图例 Scale
 1:2500 ON A3

修订编号
 Rev. -

圖例 :
LEGEND :

- 受影響的魚塘
POND AFFECTED
- 受影響的蘆葦區域
REED BED AFFECTED
- 地面道路
AT-GRADE ROAD
- 高架橋
ELEVATED VIADUCT
- 施工區界限
LIMIT OF WORKS AREA



Printed by : 3/21/2013
 Filename : M:\Drawing\200000\209840-02\Lok Ma Chau Loop\Civil\20130318 (Preliminary Design)\209840_HY_300.dgn

土木工程拓展署
 CIVIL ENGINEERING AND DEVELOPMENT DEPARTMENT

規劃署
 PLANNING DEPARTMENT

ARUP
 奧雅納工程顧問
 Ove Arup & Partners
 Hong Kong Limited

研究項目 Job Title
 合約編號 Agreement No. CE 53/2008 (CE)
 落馬洲河套地區發展規劃及工程研究 - 勘查研究
 Planning and Engineering Study on
 Development of Lok Ma Chau Loop - Investigation

圖則項目 Title
 連接落馬洲站的直接通道總圖
DIRECT LINK TO MTR LOK MA CHAU STATION
GENERAL LAYOUT - KEY PLAN

圖則編號 Figure No.
209840/HY/300

圖例 Scale: 1:250 ON A1 修訂編號 Rev.
 1:2500 ON A3 Rev.

A